

) david
trubridge



Kōura



Kōura



Inspired by woven baskets and also from the curled form of the New Zealand native fresh water shrimp, kōura, which is its Māori name. Kōura pendant light was inspired by woven baskets and also from the curled form of the New Zealand native fresh water shrimp, kōura, which is its Māori name. Kōura is an early design, undergoing many design changes to tweak its final form.

Kōura comes in a range of size options to suit any home or building. The plywood finish can be all natural bamboo or painted creating a wide range of colour options.



Features

Shipped Kitset

Seed System kitset lightshades are on average 1/30th of the volume of the assembled light. This aims to help minimize the effects of shipping and to reduce the design's environmental footprint.

Compliance

CE

AS/NZS

(Declarations of conformity available on request).

Care Instructions

All wooden and/or polycarbonate lights are intended for use in dry interior conditions only and can be cleaned with a soft cloth dampened slightly in warm water when the light is switched off. Do not use detergents.

Light sizes

David Trubridge kitset lightshades come in various sizes, making it easy to find the right size to any interior space whether it's small or large.

EPD Certified

An EPD is a standardised and verified way of quantifying the environmental impacts of a product, based on a consistent set of rules that have been developed through a stakeholder consultation process.

Warranty

This light is warranted for three years from date of purchase for failure of parts.



THE INTERNATIONAL EPD® SYSTEM

Technical Data



500mm/20" 750mm/29" 1000mm/39" 1200mm/47" 1600mm/63" 2000mm/79" 2400mm/94"

Width: 300mm / 12"	Width: 420mm / 17"	Width: 550mm / 22"	Width: 677mm / 27"	Width: 950mm / 37"	Width: 1100mm / 43"	Width: 1400mm / 55"	
Height: 500mm / 20"	Height: 750mm / 30"	Height: 970mm / 38"	Height: 1200mm / 47"	Height: 1600mm / 63"	Height: 2000mm / 79"	Height: 2400mm / 94"	
Weight: 0.45kg / 0.99lb	Weight: 0.75kg / 1.65lb	Weight: 1.8kg / 3.96lb	Weight: 2.2kg / 4.85lb	Weight: 7kg / 15.43lb	Weight: 10kg / 22.04lb	Weight: 12.5kg / 27.55lb	
2m / 6.5ft	2m / 6.5ft	2m / 6.5ft	3m / 9.8ft	5m / 16.4ft	5m / 16.4ft	5m / 16.4ft	
Bamboo plywood (Sourced from FSC accredited factory)	Bamboo plywood (Sourced from FSC accredited factory)	Bamboo plywood (Sourced from FSC accredited factory)	Bamboo plywood (Sourced from FSC accredited factory)	Bamboo plywood (Sourced from FSC accredited factory)	Bamboo plywood (Sourced from FSC accredited factory)	Bamboo plywood (Sourced from FSC accredited factory)	
Nylon	Nylon	Nylon	Nylon	Nylon	Nylon	Nylon	
Hangs on cord	Hangs on cord	Hangs on cord	Hangs on cord	3 x Suspension Wires	3 x Suspension Wires	3 x Suspension Wires	
565mm x 185mm x 70mm 22" x 7" x 3"	880mm x 200mm x 70mm 35" x 8" x 3"	740mm x 250mm x 90mm 29" x 10" x 3"	830mm x 305mm x 60mm 33" x 12" x 2"	1255mm x 370mm x 190mm 49" x 15" x 7"	1375mm x 450mm x 160mm 54" x 18" x 6"	1780mm x 530mm x 160mm 70" x 21" x 6"	
0.007m ³ / 0.3ft ³ 0.9kg / 2lb	0.012m ³ / 0.435ft ³ 2kg / 4.41lb	0.017m ³ / 0.600ft ³ 3kg / 6.61lb	0.015m ³ / 0.53ft ³ 3.5kg / 7.7lb	0.088m ³ / 3.1ft ³ 9.2kg / 20.3lb	0.100m ³ / 3.531ft ³ 20kg / 44.09lb	0.151m ³ / 5.332ft ³ 30kg / 66.13lb	

Dimensions

Cordset*

Material

Fasteners

Suspension

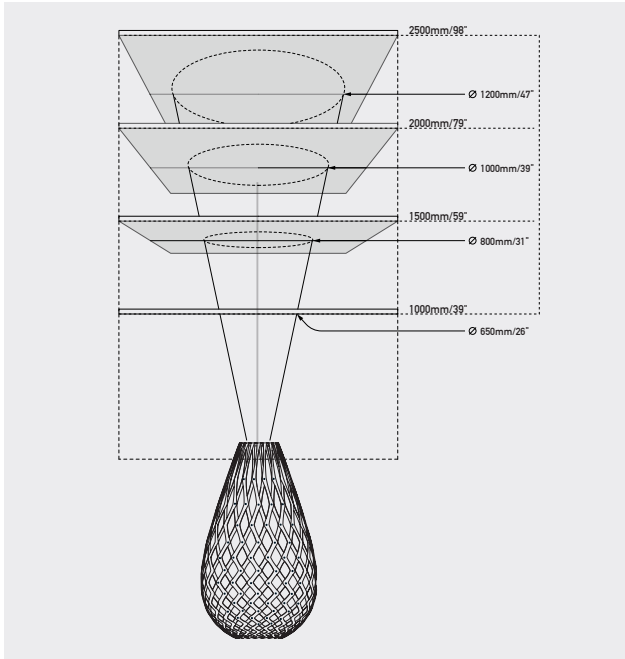
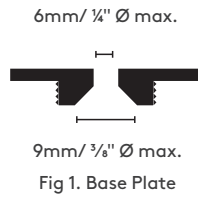
Packaging

*Black comes with black cordset and fasteners. All others come with white cordset and clear fasteners. Custom cordset lengths available on request.

Diagrams

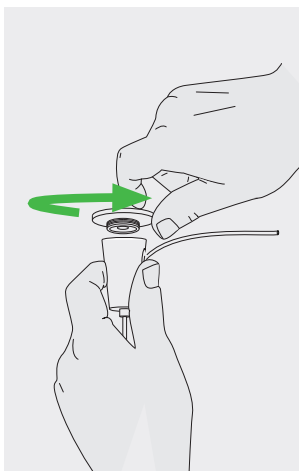
Fixings for cone gripper (fixing screws NOT SUPPLIED).

Note: Choose appropriate hardware to attach base plate (Fig.1) to ceiling substrate.



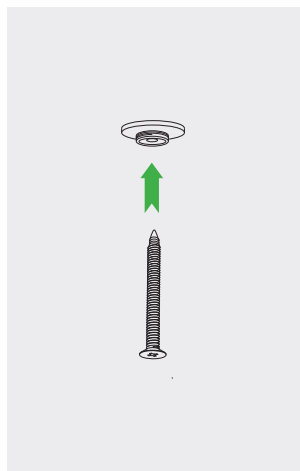
Step 1.

Decide upon hanging distance. Use the schematic diagram as a guide to pick a circle radius to be marked out on ceiling. This circle can be marked with a length of timber or string.



Step 1.

Unscrew baseplate.



Step 2.

Use appropriate fixing screw to mount base plate (Fig.1).

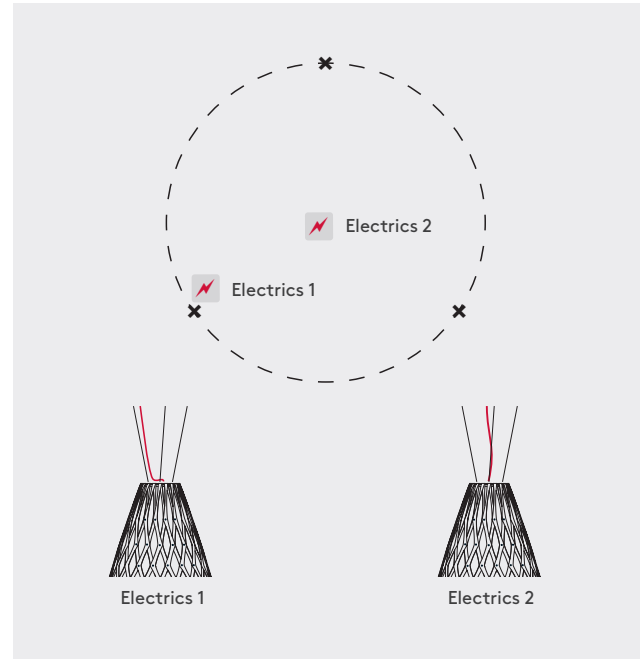
Installation

1600mm/63"

2000mm/79"

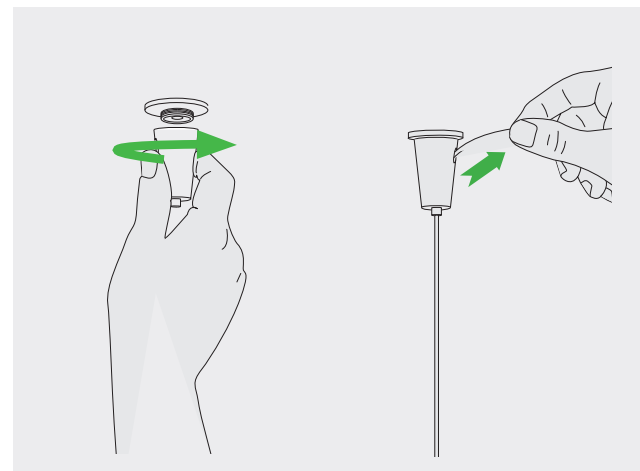
2400mm/94"

Options



Step 2.

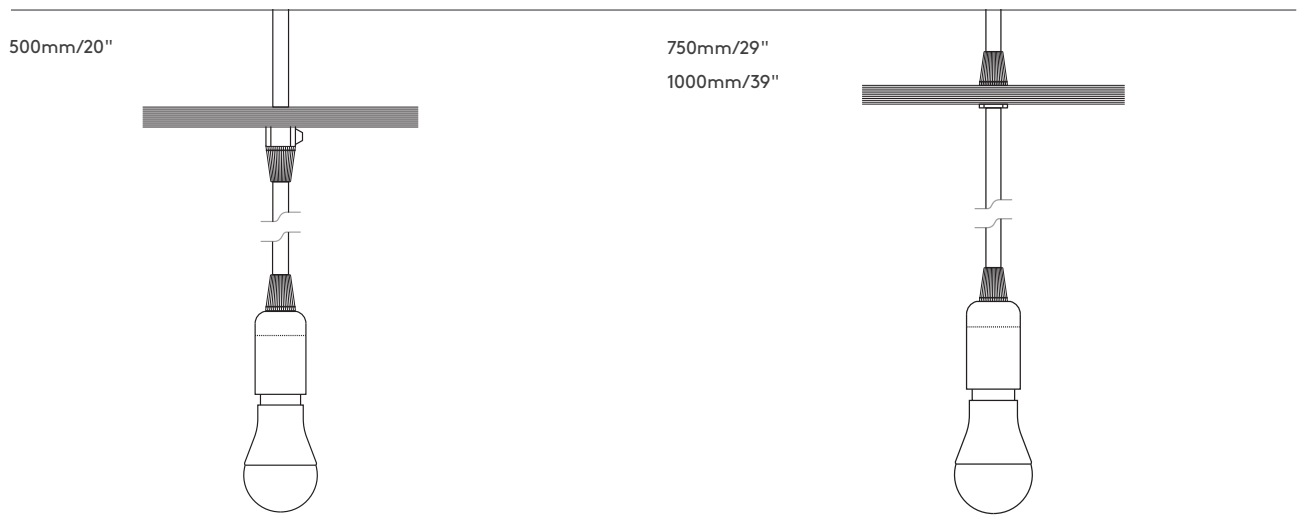
Mark 3 hanging points where your cone grippers will be located. You can either centrally locate the ceiling canopy or run the electric cord up one of the suspension wires.



Step 3.

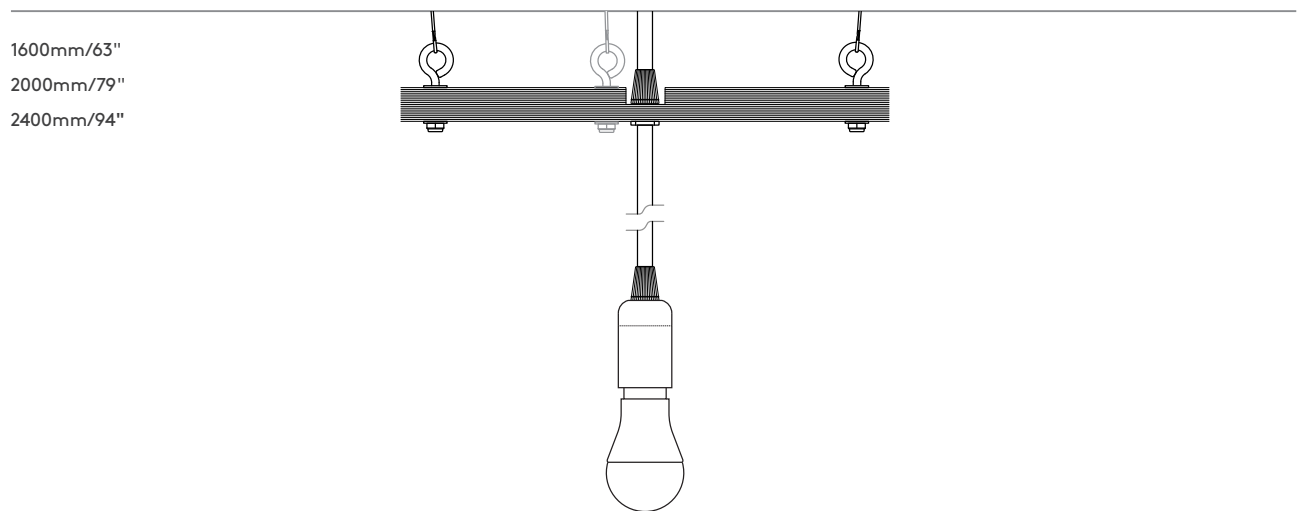
Remove cable from cone. Screw cone back onto baseplate. Re-insert cable and level light. Once desired position is set, trim excess cable.

Diagrams



North America: E26, Max 60 Watts
120v AC 60hz
Rest of World: E27, Max 60 Watts
230-240v AC 50hz

North America: E26, Max 60 Watts
120v AC 60hz
Rest of World: E27, Max 60 Watts
230-240v AC 50hz



North America: E26, Max 60 Watts
120v AC 60hz
Rest of World: E27, Max 60 Watts
230-240v AC 50hz

Finish Choices

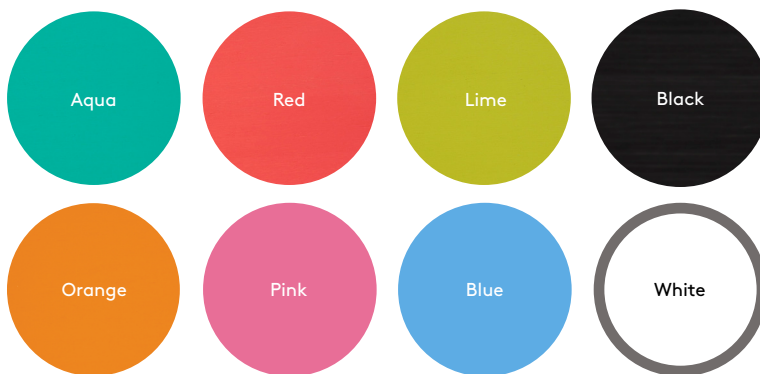
We offer 12 stock finish options for Toru. We use low VOC acrylic paint and it is most commonly used on the interior of the light. We can also produce lights in other finishes or colours by special order. All lights are made from sustainably grown bamboo plywood sourced from an FSC accredited factory.



Raw finish:



Painted 1 Side:



Painted 2 Sides: (inside and outside)





Bamboo



Aqua



Lime



Red



Orange



Blue



Pink



Black 1 Side (Outside)



Black 1 Side (Inside)



Black 2 Sides



White 1 Side



White 2 Sides



) david
trubridge

davidtrubridge.com

David Trubridge Studio

Hawke's Bay, New Zealand

info@davidtrubridge.com

+ 64 6 650 0204