

KĀINGA MAHA

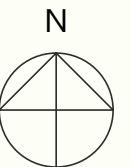


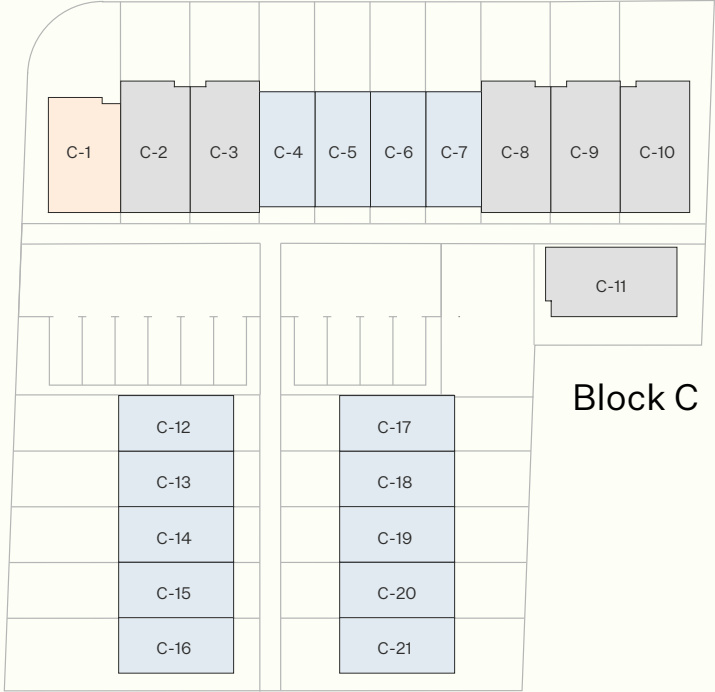
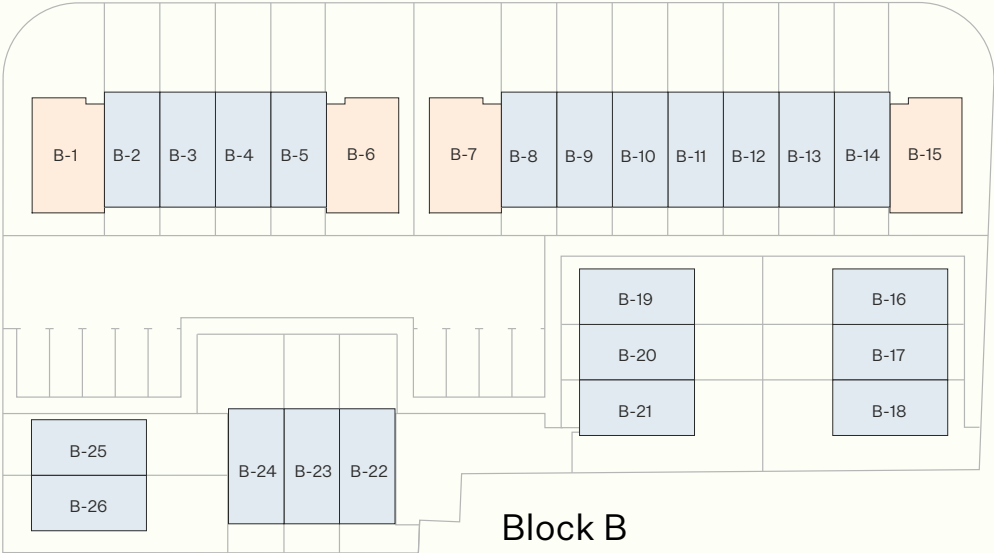
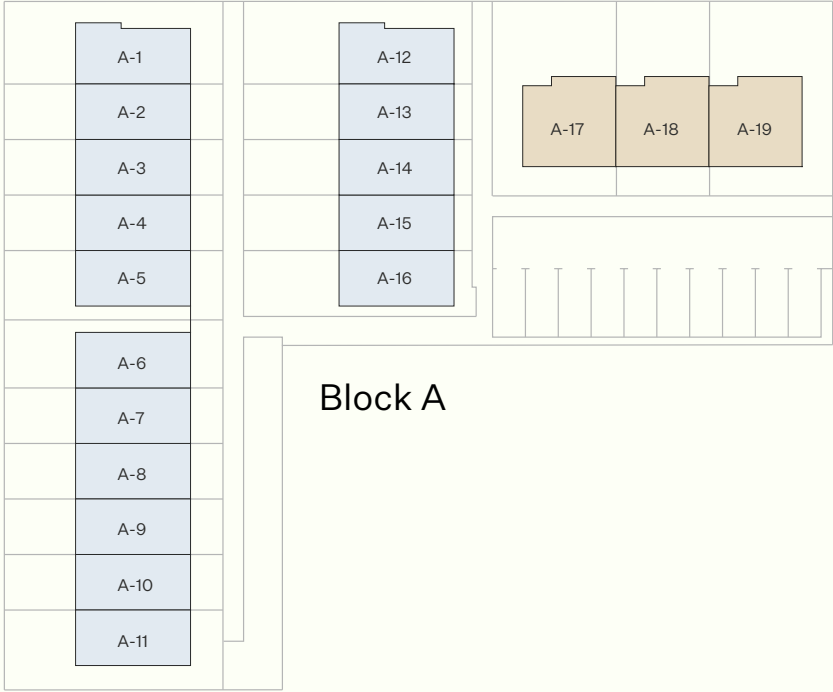
home.

Home *Whenua*
Development Trust

Disclaimer: The plans and specifications are in draft form and are not final construction drawings. They are subject to variations as may be required by the relevant local authority or as may be reasonably required by the vendor to give effect to the vendor's scheme of development.

Price list available at
tepakaumaru.nz





Block A					Block B					Block C				
Lot	Type	Total Land m²	Home m²	Carpark	Lot	Type	Total Land m²	Home m²	Carpark	Lot	Type	Total Land m²	Home m²	Carpark
A-1	2G	107	74	–	B-1	4	167	132	1	C-1	4	156	132	1
A-2	2G	77	74	–	B-2	2D	117	74	1	C-2	3T	126	96	1
A-3	2G	77	74	–	B-3	2D	117	74	1	C-3	3T	126	96	1
A-4	2G	77	74	–	B-4	2D	117	74	1	C-4	2D	111	74	1
A-5	2G	123	74	1	B-5	2D	117	74	1	C-5	2D	111	74	1
A-6	2G	123	74	1	B-6	4	162	132	1	C-6	2D	111	74	1
A-7	2G	77	74	–	B-7	4	157	132	1	C-7	2D	76	74	–
A-8	2G	77	74	–	B-8	2D	117	74	1	C-8	3T	126	96	1
A-9	2G	77	74	–	B-9	2D	66	74	–	C-9	3T	126	96	1
A-10	2G	77	74	–	B-10	2D	66	74	–	C-10	3T	151	96	1
A-11	2G	102	74	–	B-11	2D	66	74	–	C-11	3S	131	96	1
A-12	2G	148	74	1	B-12	2D	66	74	–	C-12	2D	76	74	–
A-13	2G	113	74	1	B-13	2D	66	74	–	C-13	2D	76	74	–
A-14	2G	113	74	1	B-14	2D	66	74	–	C-14	2D	76	74	–
A-15	2G	103	74	1	B-15	4	172	132	1	C-15	2D	76	74	–
A-16	2G	118	74	1	B-16	2G	106	74	–	C-16	2D	111	74	–
A-17	3W	126	96	1	B-17	2G	66	74	–	C-17	2G	76	74	–
A-18	3W	116	96	1	B-18	2G	106	74	–	C-18	2G	71	74	–
A-19	3W	146	96	1	B-19	2G	101	74	–	C-19	2G	71	74	–
					B-20	2G	61	74	–	C-20	2G	66	74	–
					B-21	2G	106	74	–	C-21	2G	86	74	–
					B-22	2G	91	74	–					
					B-23	2G	61	74	–					
					B-24	2G	86	74	–					
					B-25	2G	86	74	–					
					B-26	2G	86	74	–					

2 Bedroom

3 Bedroom

3 Bedroom

4 Bedroom

Price list available at tepakaumaru.nz

Disclaimer: The plans and specifications are in draft form and are not final construction drawings. They are subject to variations as may be required by the relevant local authority or as may be reasonably required by the vendor to give effect to the vendor’s scheme of development.

TE PĀKAU MARU

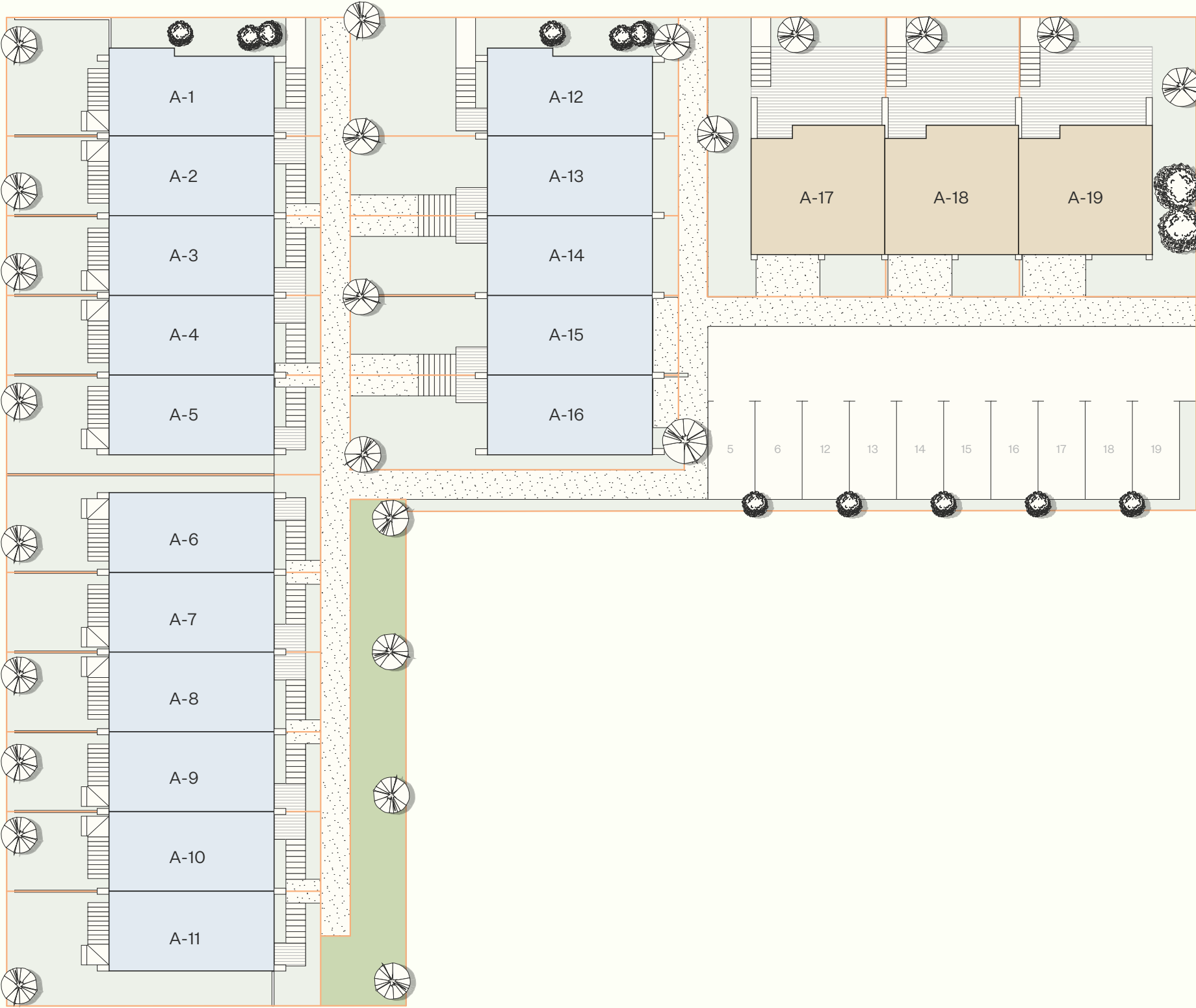
Block A Information

Estimated completion from Dec 2023

Lot	Type	Total Land m²	Home m²
A-1	2G	107	74
A-2	2G	77	74
A-3	2G	77	74
A-4	2G	77	74
A-5	2G	123	74
A-6	2G	123	74
A-7	2G	77	74
A-8	2G	77	74
A-9	2G	77	74
A-10	2G	77	74
A-11	2G	102	74
A-12	2G	148	74
A-13	2G	113	74
A-14	2G	113	74
A-15	2G	103	74
A-16	2G	118	74
A-17	3W	126	96
A-18	3W	116	96
A-19	3W	146	96

Legend

- 2 Bedroom
- 3 Bedroom
- 3 Bedroom
- 4 Bedroom
- Tree
- Tree
- Lawn
- Paved area
- Timber decking



Block A

North: ↑

Scale: 1:250 @ A3

5m

10m

KĀINGA MAHA

Home Foundation

home.

Home Whenua Development Trust

Disclaimer: The plans and specifications are in draft form and are not final construction drawings. They are subject to variations as may be required by the relevant local authority or as may be reasonably required by the vendor to give effect to the vendor's scheme of development.

Price list available at tepakaumaru.nz

TE PĀKAU MARU

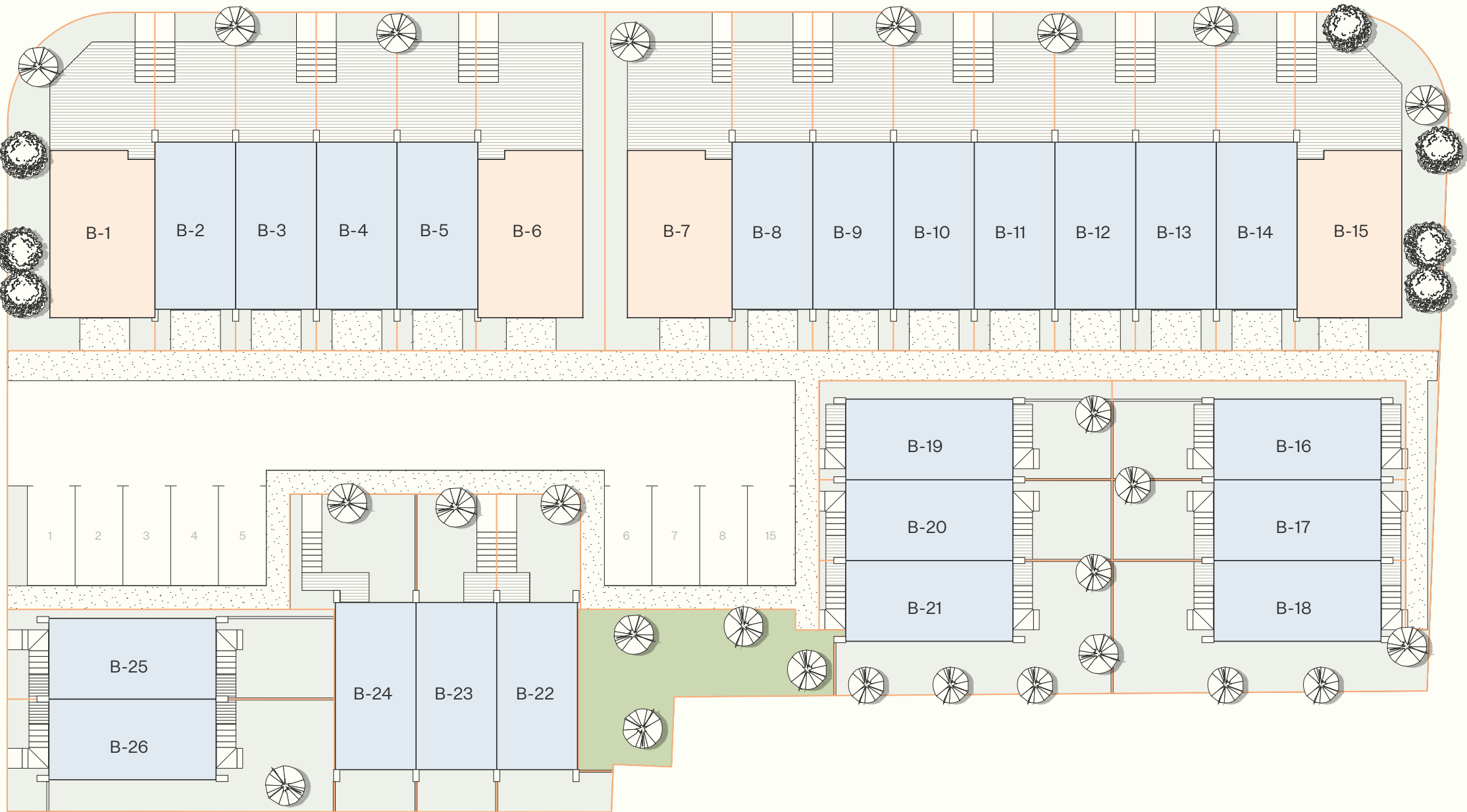
Block B Information

Estimated completion from March 2024

Lot	Type	Total Land m²	Home m²
B-1	4	167	132
B-2	2D	117	74
B-3	2D	117	74
B-4	2D	117	74
B-5	2D	117	74
B-6	4	162	132
B-7	4	157	132
B-8	2D	117	74
B-9	2D	66	74
B-10	2D	66	74
B-11	2D	66	74
B-12	2D	66	74
B-13	2D	66	74
B-14	2D	66	74
B-15	4	172	132
B-16	2G	106	74
B-17	2G	66	74
B-18	2G	106	74
B-19	2G	101	74
B-20	2G	61	74
B-21	2G	106	74
B-22	2G	91	74
B-23	2G	61	74
B-24	2G	86	74
B-25	2G	86	74
B-26	2G	86	74

Legend

- 2 Bedroom
- 3 Bedroom
- 3 Bedroom
- 4 Bedroom
- Tree
- Tree
- Lawn
- Paved area
- Timber decking



Block A North: ↑

Scale: 1:250 @ A3

5m 10m

KĀINGA MAHA home.

Home Foundation Home Whenua Development Trust

Disclaimer: The plans and specifications are in draft form and are not final construction drawings. They are subject to variations as may be required by the relevant local authority or as may be reasonably required by the vendor to give effect to the vendor's scheme of development.

Price list available at tepakaumarunz









TE PĀKAU MARU

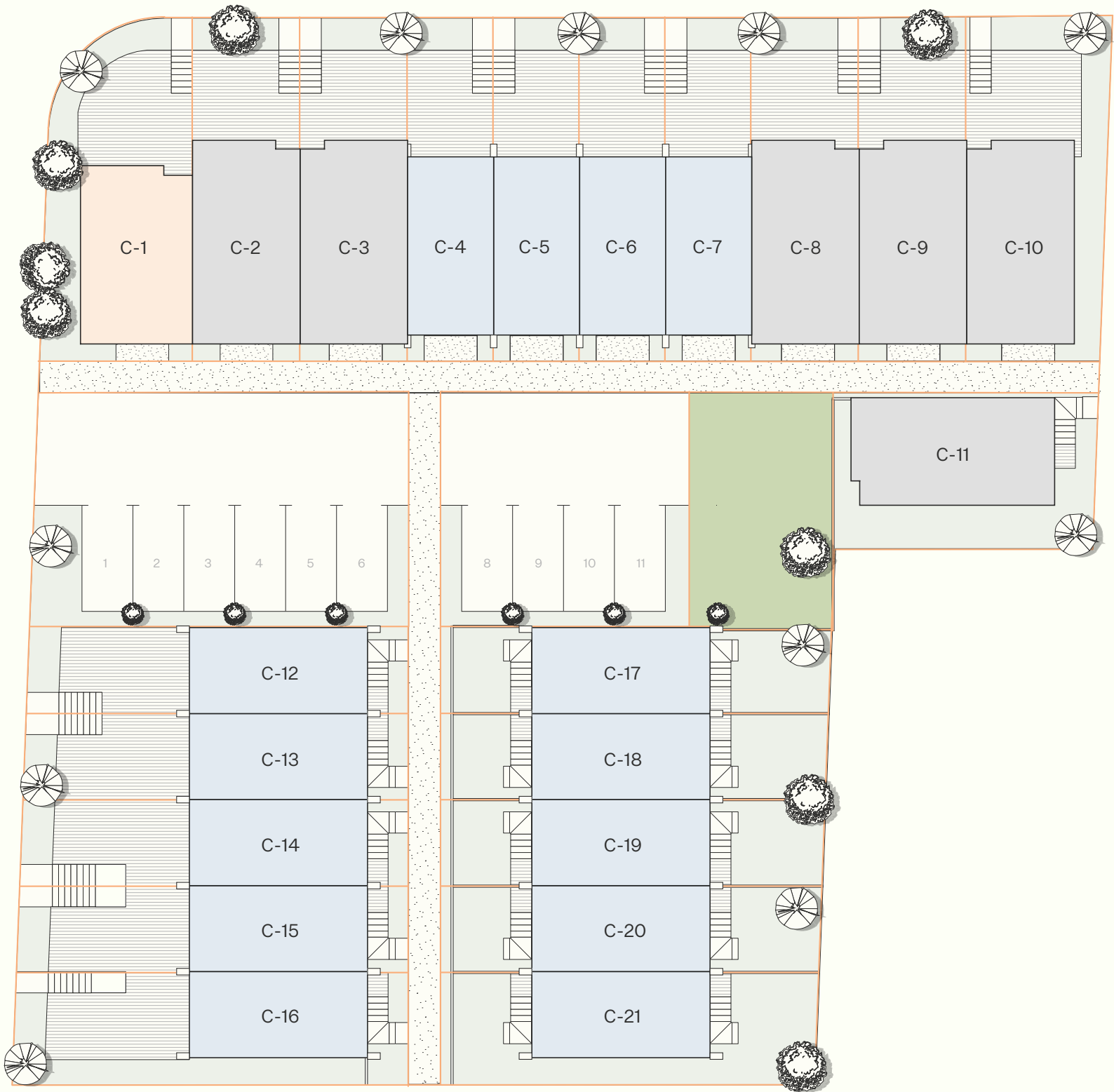
Block C Information

Estimated completion from June 2024

Lot	Type	Total Land m²	Home m²
C-1	4	156	132
C-2	3T	126	96
C-3	3T	126	96
C-4	2D	111	74
C-5	2D	111	74
C-6	2D	111	74
C-7	2D	76	74
C-8	3T	126	96
C-9	3T	126	96
C-10	3T	151	96
C-11	3S	131	96
C-12	2D	76	74
C-13	2D	76	74
C-14	2D	76	74
C-15	2D	76	74
C-16	2D	111	74
C-17	2G	76	74
C-18	2G	71	74
C-19	2G	71	74
C-20	2G	66	74
C-21	2G	86	74

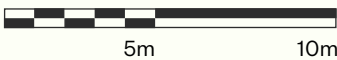
Legend

 2 Bedroom	 Tree
 3 Bedroom	 Tree
 3 Bedroom	 Lawn
 4 Bedroom	 Paved area
	 Timber decking



Block C **North:** ↑

Scale: 1:250 @ A3



KĀINGA MAHA



home.

Home *Whenua*
Development Trust

Disclaimer: The plans and specifications are in draft form and are not final construction drawings. They are subject to variations as may be required by the relevant local authority or as may be reasonably required by the vendor to give effect to the vendor's scheme of development.

Price list available at
tepakaumarunz

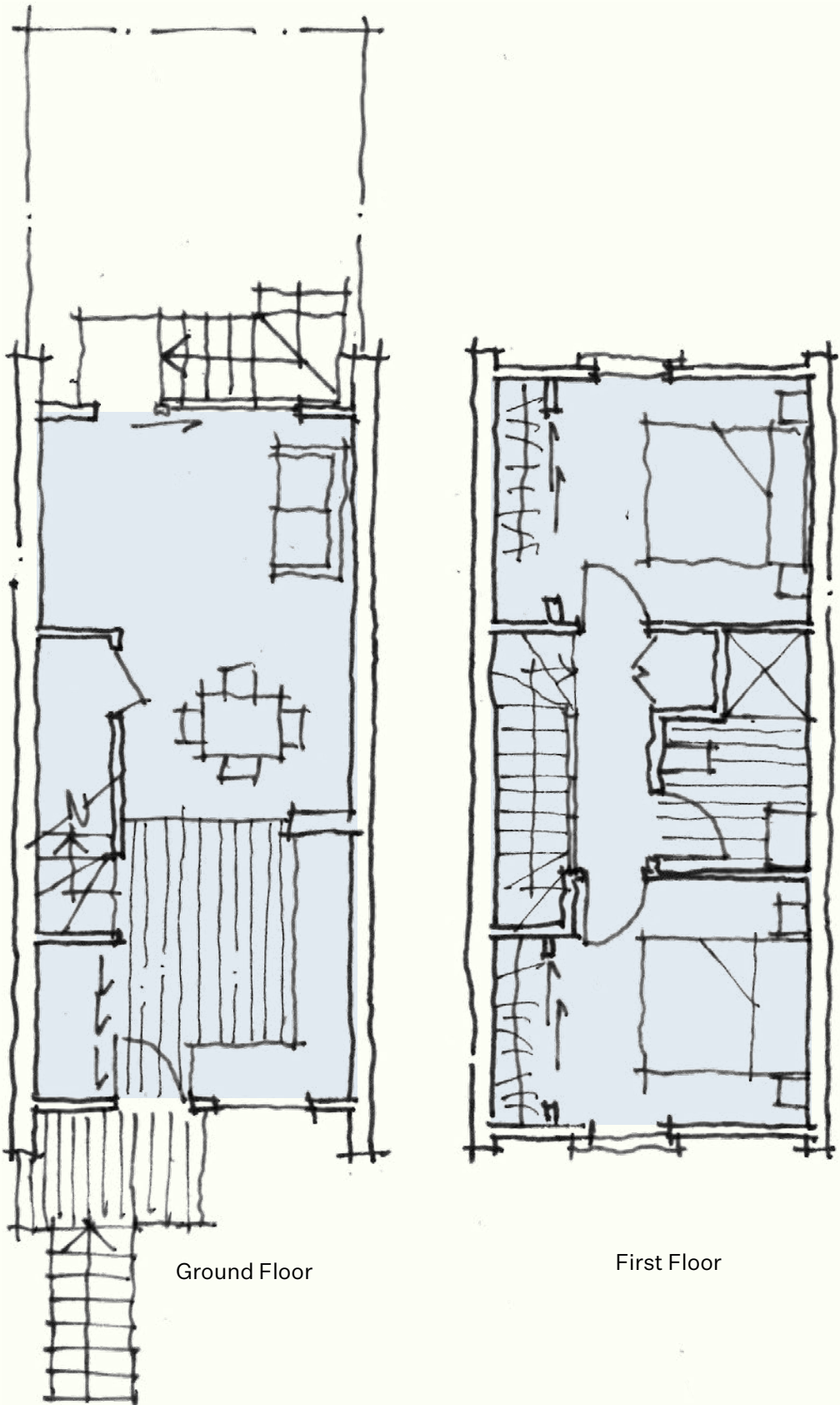
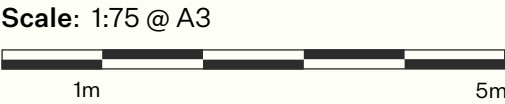
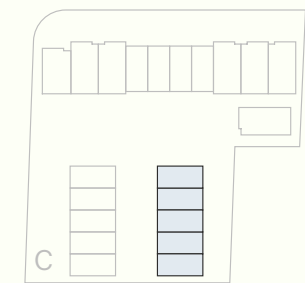
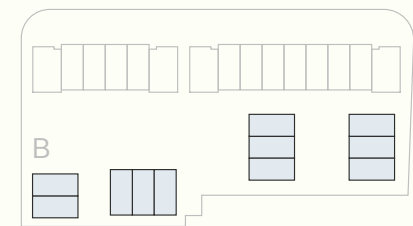
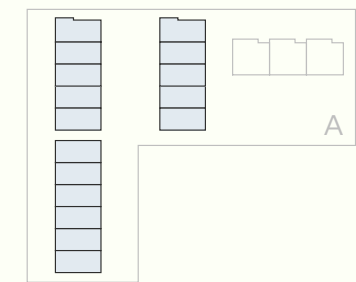
TE PĀKAU MARU

2G — 2 Bedroom Home

Bedrooms	2
Bathrooms	1
Internal floor area**	74m ²

** More or less

Lot numbers	Block A	1–16
	Block B	16–26
	Block C	17–21



Ground Floor

First Floor

All Te Pākau Maru homes include house, land, fencing and hard and soft landscaping in the purchase price. Please refer to the general specifications pdf for the fit-out list. Furniture is indicative only. Home orientation, landscape plan and site sizes differ between lots. Please refer to the masterplan to better determine the position, size and landscaping of your home. Not final and subject to change.

KĀINGA MAHA



home.

Home *Whenua*
Development Trust

Disclaimer: The plans and specifications are in draft form and are not final construction drawings. They are subject to variations as may be required by the relevant local authority or as may be reasonably required by the vendor to give effect to the vendor's scheme of development.

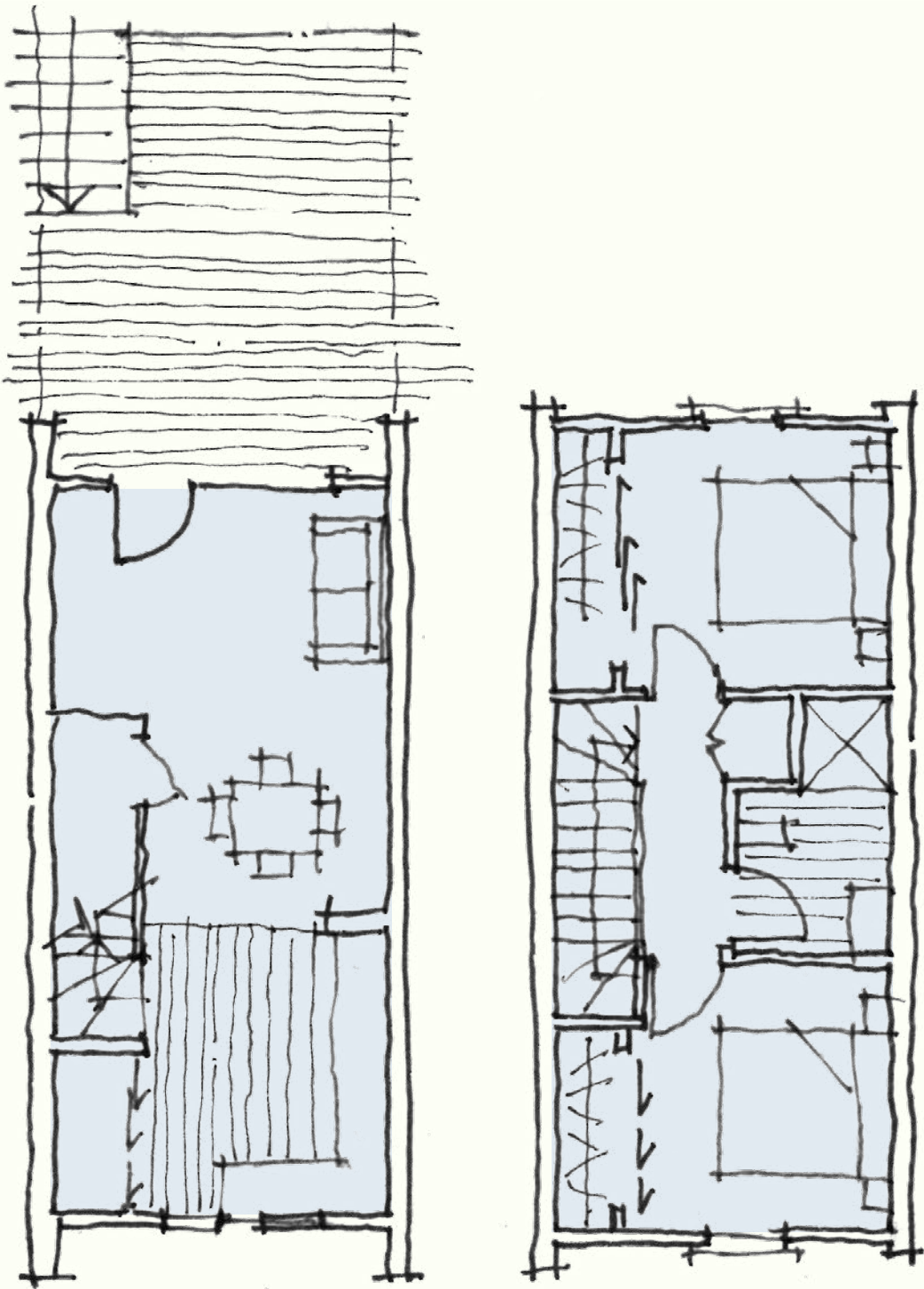
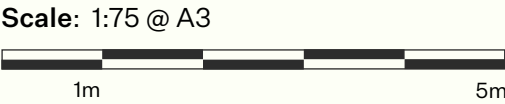
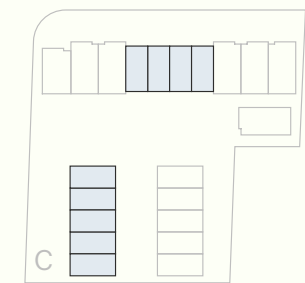
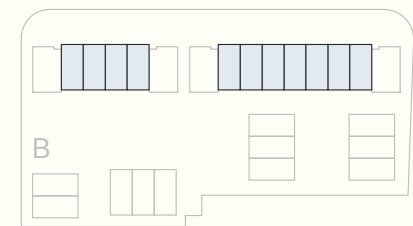
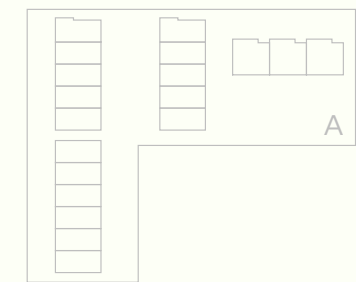
TE PĀKAU MARU

2D – 2 Bedroom Home

Bedrooms	2
Bathrooms	1
Internal floor area**	74m ²

** More or less

Lot numbers	Block B	2–5, 8–14
	Block C	4–7, 12–16



Ground Floor

First Floor

All Te Pākau Maru homes include house, land, fencing and hard and soft landscaping in the purchase price. Please refer to the general specifications pdf for the fit-out list. Furniture is indicative only. Home orientation, landscape plan and site sizes differ between lots. Please refer to the masterplan to better determine the position, size and landscaping of your home. Not final and subject to change.

Disclaimer: The plans and specifications are in draft form and are not final construction drawings. They are subject to variations as may be required by the relevant local authority or as may be reasonably required by the vendor to give effect to the vendor’s scheme of development.

TE PĀKAU MARU

Scale: 1:75 @ A3

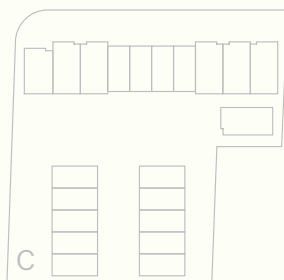
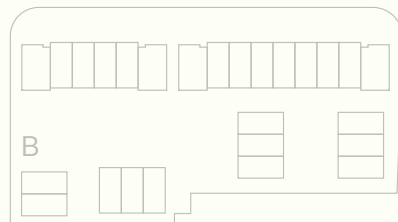
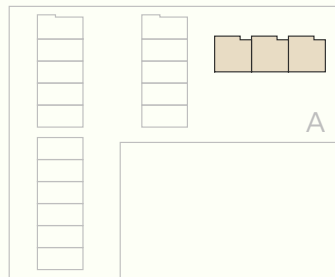


3W — 3 Bedroom Home

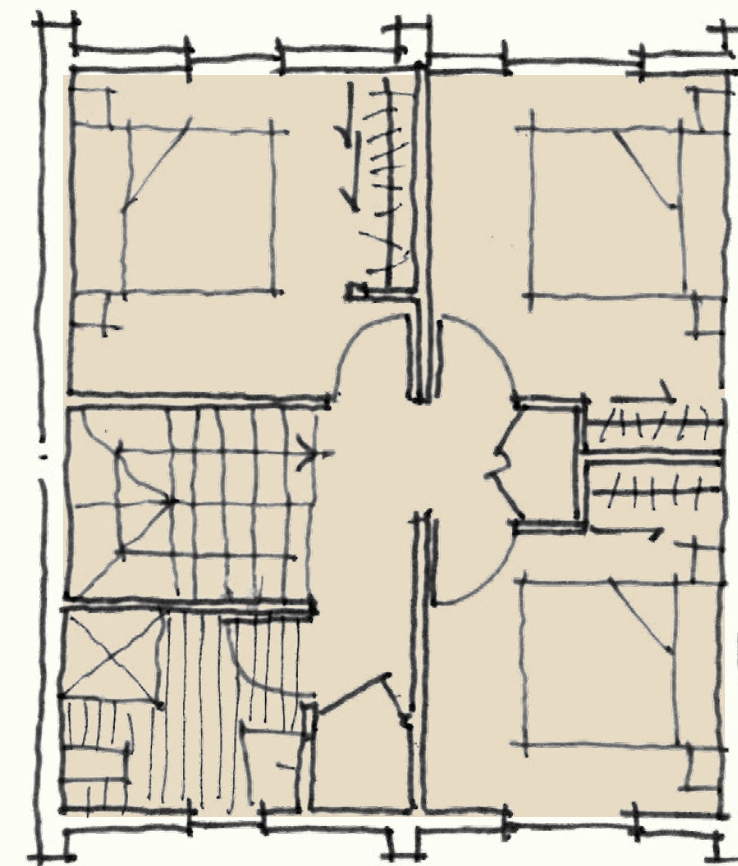
Bedrooms	3
Bathrooms	1.5
Internal floor area**	96m ²

** More or less

Lot numbers	Block A	17-19
-------------	---------	-------



Ground Floor



First Floor

All Te Pākau Maru homes include house, land, fencing and hard and soft landscaping in the purchase price. Please refer to the general specifications pdf for the fit-out list. Furniture is indicative only. Home orientation, landscape plan and site sizes differ between lots. Please refer to the masterplan to better determine the position, size and landscaping of your home. Not final and subject to change.

KĀINGA MAHA



home.

Home *Whenua*
Development Trust

Disclaimer: The plans and specifications are in draft form and are not final construction drawings. They are subject to variations as may be required by the relevant local authority or as may be reasonably required by the vendor to give effect to the vendor's scheme of development.

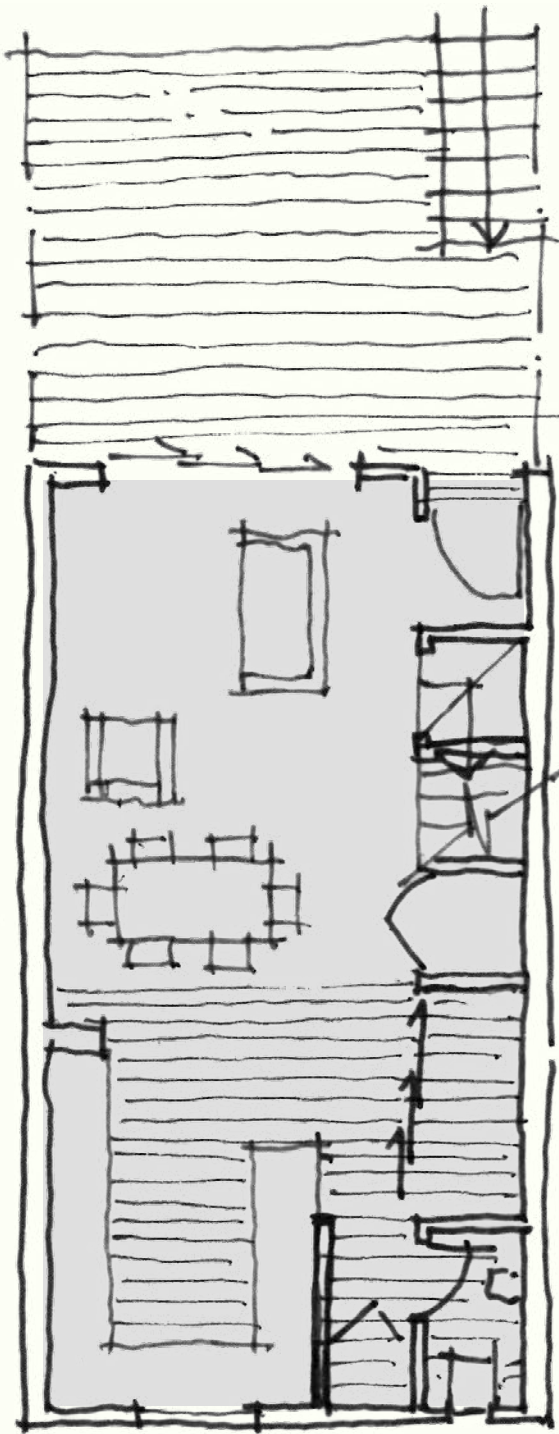
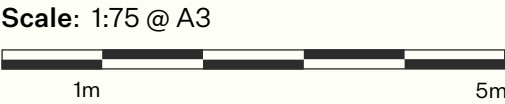
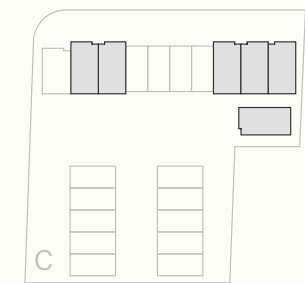
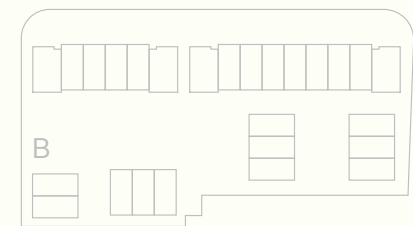
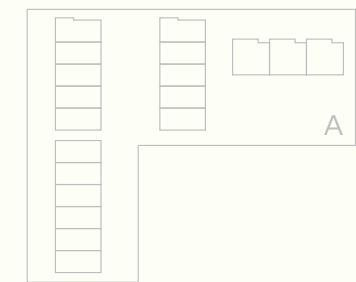
TE PĀKAU MARU

3T — 3 Bedroom Home

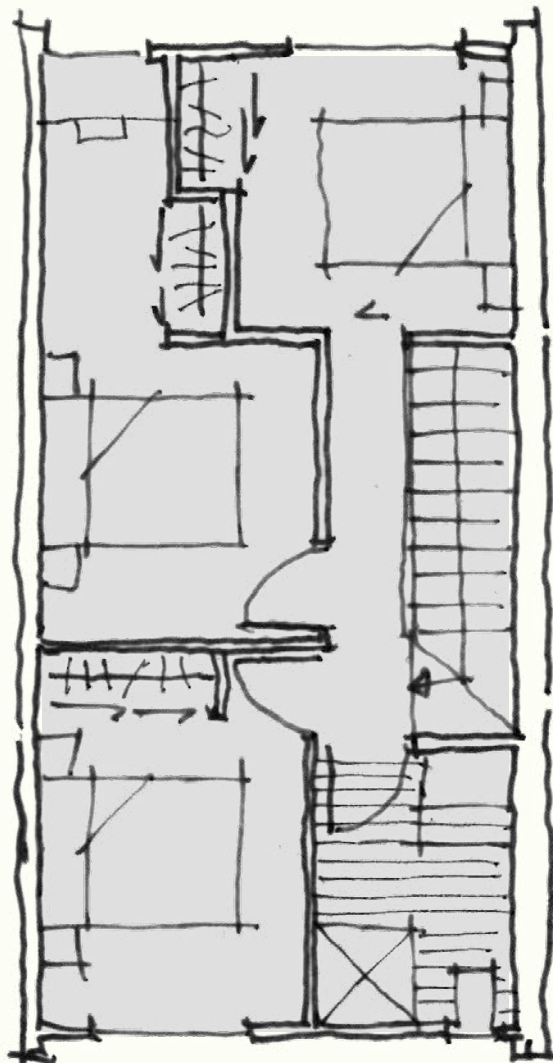
Bedrooms	3
Bathrooms	1.5
Internal floor area**	96m ²

** More or less

Lot numbers Block C 2, 3, 8–11



Ground Floor



First Floor

All Te Pākau Maru homes include house, land, fencing and hard and soft landscaping in the purchase price. Please refer to the general specifications pdf for the fit-out list. Furniture is indicative only. Home orientation, landscape plan and site sizes differ between lots. Please refer to the masterplan to better determine the position, size and landscaping of your home. Not final and subject to change.

Disclaimer: The plans and specifications are in draft form and are not final construction drawings. They are subject to variations as may be required by the relevant local authority or as may be reasonably required by the vendor to give effect to the vendor’s scheme of development.

TE PĀKAU MARU

Scale: 1:75 @ A3

1m

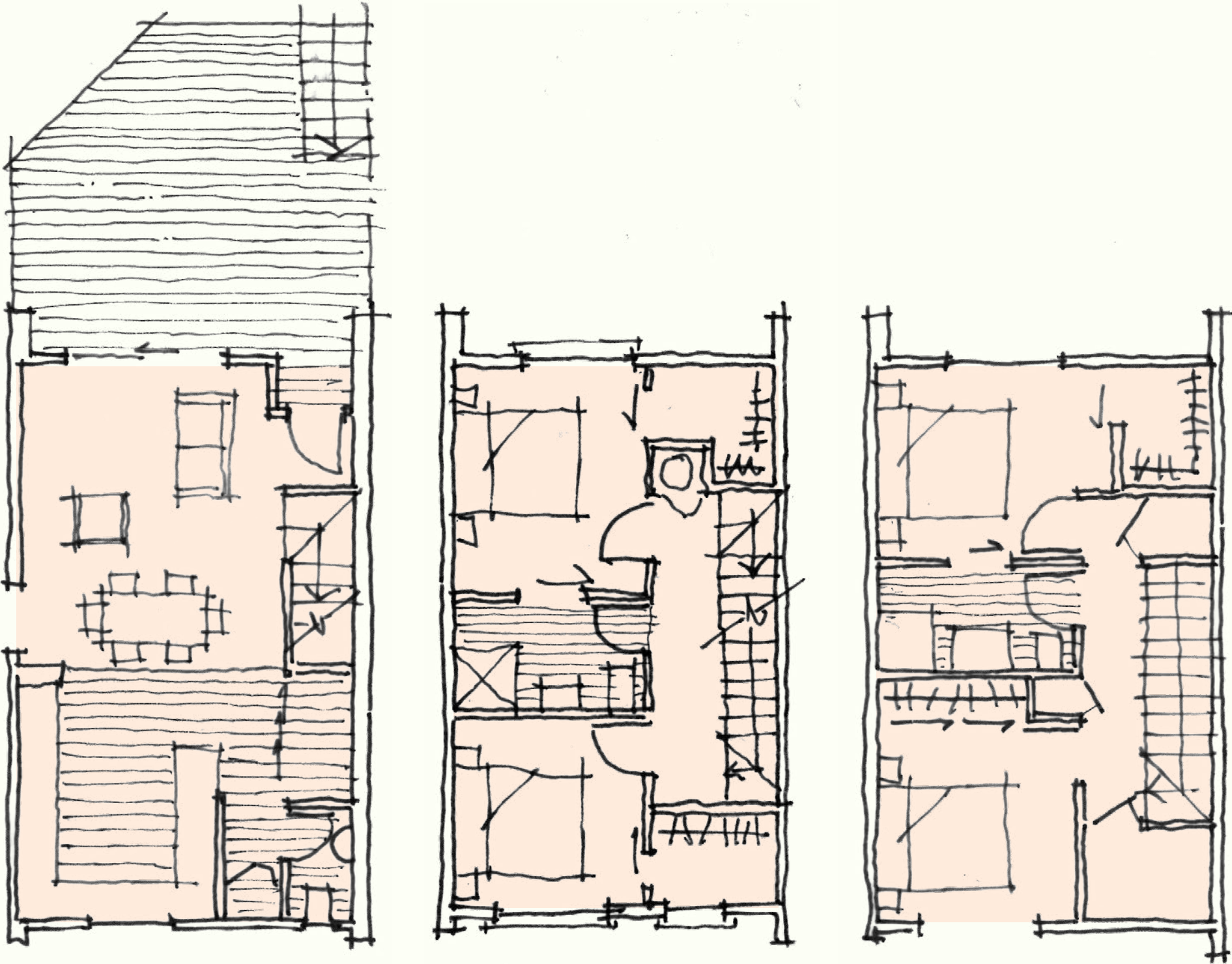
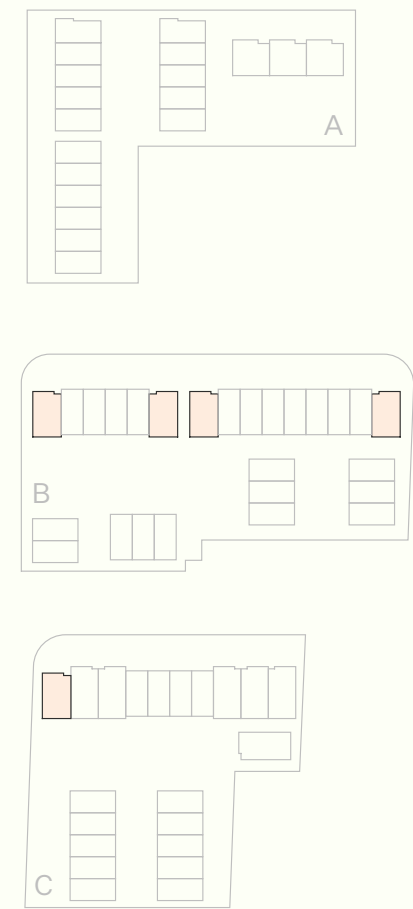
5m

4 — 4 Bedroom Home

Bedrooms	4
Bathrooms	2.5
Internal floor area**	132m ²

** More or less

Lot numbers	Block B	1, 6, 7, 15
	Block C	1



Ground Floor

First Floor

Second Floor

All Te Pākau Maru homes include house, land, fencing and hard and soft landscaping in the purchase price. Please refer to the general specifications pdf for the fit-out list. Furniture is indicative only. Home orientation, landscape plan and site sizes differ between lots. Please refer to the masterplan to better determine the position, size and landscaping of your home. Not final and subject to change.

Disclaimer: The plans and specifications are in draft form and are not final construction drawings. They are subject to variations as may be required by the relevant local authority or as may be reasonably required by the vendor to give effect to the vendor’s scheme of development.