

FULLVIEW & ULTRAVIEW BAHAMA SHUTTER (HVHZ AND NON-HVHZ COMPLIANT)  
PATENT #8126298 & 8136298B1

FRANK BENNARDO, PE  
PE# 0046549 CA#9885



CORPORATE OFFICE:  
160 SW 12th AVE, SUITE 106  
DEERFIELD BEACH, FL 33442  
(954) 354-0660 | (866) 396-9999  
TEAM@ENGINEERINGEXPRESS.COM  
ENGINEERINGEXPRESS.COM

**Town & Country**  
INDUSTRIES  
Wholesale Aluminum and Building Products  
A Division of ABC Supply Co., Inc.  
400 WEST MCNAB ROAD  
FT. LAUDERDALE, FL 33309

DRWN	CHKD	DATE
RKB	FLB	12/15/09
CSL	KL	2/1/16/11
RWN	CSL	4/04/15
RWN	FLB	8/02/17
CB	RWN	6/24/20

REMARKS

INIT ISSUE

2010 FBC

2014 FBC

2017 FBC

2020 FBC

THIS DOCUMENT IS THE PROPERTY OF FRANK L. BENNARDO, P.E. AND SHALL NOT BE REPRODUCED, COPIED, OR TRANSMITTED IN ANY FORM OR BY ANY MEANS, WITHOUT THE WRITTEN PERMISSION OF FRANK L. BENNARDO, P.E. ANY ALTERATIONS, ADDITIONS, DELETIONS, OR OTHER MARKINGS TO THIS DOCUMENT ARE NOT PERMITTED AND WILL INVALIDATE OUR CERTIFICATION.

COPYRIGHT FRANK L. BENNARDO P.E.

20-26176

SCALE: -  
PAGE DESCRIPTION:

1

GENERAL NOTES

- THE SYSTEM DESCRIBED HEREIN HAS BEEN DESIGNED AND TESTED IN ACCORDANCE WITH THE FLORIDA BUILDING CODE SEVENTH EDITION (2020), FOR USE WITHIN THE HVHZ AND NON-HVHZ, AS WELL AS THE INTERNATIONAL BUILDING CODE (IBC) AND INTERNATIONAL RESIDENTIAL CODE (IRC). SEE PRODUCT EVALUATION REPORT FOR ADDITIONAL INFORMATION.
- NO 33-1/3% INCREASE IN ALLOWABLE STRESS HAS BEEN USED IN THE DESIGN OF THIS SYSTEM. WIND LOAD DURATION FACTOR Cd=1.6 HAS BEEN USED FOR WOOD ANCHOR DESIGN.
- POSITIVE AND NEGATIVE DESIGN PRESSURES CALCULATED FOR USE WITH THIS SYSTEM SHALL BE DETERMINED PER SEPARATE ENGINEERING IN ACCORDANCE WITH THE GOVERNING CODE. PRESSURE REQUIREMENTS AS DETERMINED IN ACCORDANCE WITH ASCE 7 AND CHAPTER 1609 OF THE FLORIDA BUILDING CODE SEVENTH EDITION (2020) SHALL BE LESS THAN OR EQUAL TO THE POSITIVE OR NEGATIVE DESIGN PRESSURE CAPACITY VALUES LISTED HEREIN FOR ANY ASSEMBLY AS SHOWN.
- DESIGN PRESSURES NOTED HEREIN ARE BASED ON MAXIMUM TESTED PRESSURES DIVIDED BY A 1.5 SAFETY FACTOR.
- THIS SYSTEM HAS BEEN DESIGNED WITH NO SEPARATION FROM GLAZING REQUIRED FOR ALL WIND ZONES, IN ACCORDANCE WITH ASTM 1996. IT IS ACCEPTABLE BY CODE UNLESS OPTIONAL CRITERIA IS INDEPENDENTLY ADOPTED BY THE AUTHORITY HAVING JURISDICTION.
- THE SYSTEM DETAILED HEREIN IS GENERIC AND DOES NOT PROVIDE INFORMATION FOR A SPECIFIC SITE. FOR SITE CONDITIONS DIFFERENT FROM THE CONDITIONS DETAILED HEREIN, A LICENSED ENGINEER OR REGISTERED ARCHITECT SHALL PREPARE SITE SPECIFIC DOCUMENTS FOR USE IN CONJUNCTION WITH THIS DOCUMENT.
- PERMIT HOLDER SHALL VERIFY THE ADEQUACY OF THE EXISTING STRUCTURE TO WITHSTAND SUPERIMPOSED LOADS. WOOD BUCKS (BY OTHERS) SHALL BE ANCHORED PROPERLY TO TRANSFER LOADS TO THE EXISTING STRUCTURE.
- SHUTTER MAY BE INSTALLED AS SINGLE PANEL OR AS MULTI-PANEL SPANS TO UNLIMITED WIDTH, SEE DETAIL 1/2 & 3/4 FOR MAXIMUM SLAT SPANS.
- ALL EXTRUSIONS SHALL BE 6063-T6 ALUMINUM ALLOY, UNLESS NOTED OTHERWISE. ALL TOLERANCES SHALL BE IN ACCORDANCE WITH ADM 2015.
- THIS SYSTEM MUST BE CLOSED AND LOCKED FOR WIND AND IMPACT PROTECTION. THIS SYSTEM HAS BEEN DESIGNED FOR A WIND PRESSURE OF 18 PSF IN THE OPEN POSITION. A PERMANENT LABEL MUST BE ADHERED TO THE UNDERSIDE OF EACH BAHAMA SHUTTER CONTAINING THE FOLLOWING:  
**SHUTTER AND LOUVERS TO BE CLOSED AND LOCKED WHEN HURRICANE WARNINGS ARE ISSUED**
- BAHAMA SHUTTERS SHALL BE PERMANENTLY LABELED AS PRESCRIBED IN THE ABOVE-NOTED BUILDING CODE AND CONTAIN AT LEAST THE FOLLOWING:  
**TOWN & COUNTRY INDUSTRIES**  
**FT. LAUDERDALE, FL**  
**ASTM E330, E1886, & E1996 9LB MISSILE LEVEL D**  
**TAS 201, 202, & 203**  
**FLORIDA PRODUCT APPROVAL NUMBER**
- ALL BOLTS & WASHERS SHALL BE ZINC COATED STEEL, GALVANIZED STEEL, STAINLESS STEEL, OR 2024-T6 ALUMINUM ALLOY WITH A MINIMUM TENSILE YIELD STRENGTH OF 33 KSI.
- ALL CONCRETE ANCHORS TO BE INSTALLED TO NON-CRACKED CONCRETE ONLY.
- ALL STEEL IN CONTACT WITH ALUMINUM SHALL BE PAINTED OR PLATED AS PRESCRIBED IN THE ABOVE-NOTED BUILDING CODE.

HVHZ (TABLE 1 & 2) NOTES:

- HIGH VELOCITY HURRICANE ZONE (HVHZ) IS DEFINED AS MIAMI-DADE COUNTY AND BROWARD COUNTY FLORIDA ONLY.
- TABLE 1 SHALL BE USED FOR INSTALLATIONS IN THE HIGH VELOCITY HURRICANE ZONE (HVHZ) TO DETERMINE THE MAXIMUM ALLOWABLE DESIGN PRESSURE FOR EACH SPAN.
- FOR SPANS BETWEEN TABULATED VALUES USE NEXT HIGHER SPAN.
- TABLE 2 SHALL BE USED TO DETERMINE MINIMUM SEPARATION FROM GLASS WITH IN THE HVHZ.

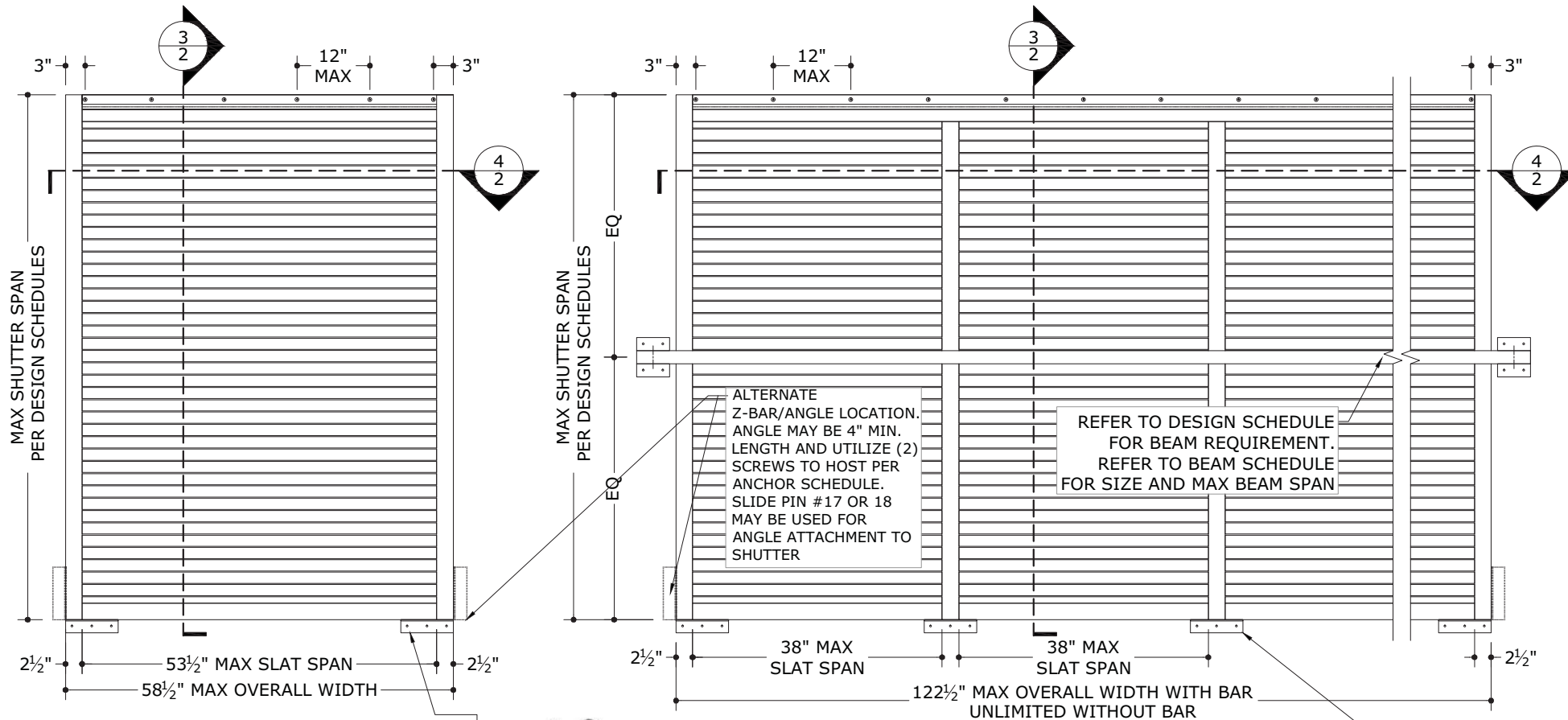
NON-HVHZ (TABLE 3 & 4) NOTES:

- NON-HVHZ IS DEFINED AS ALL LOCATIONS OTHER THAN MIAMI-DADE COUNTY AND BROWARD COUNTY FLORIDA.
- TABLE 2 MAY BE USED FOR INSTALLATIONS OUTSIDE THE HIGH VELOCITY HURRICANE ZONE (HVHZ).
- FOR SPANS BETWEEN TABULATED VALUES, USE NEXT HIGHER SPAN.
- FOR INSTALLATIONS OUTSIDE THE HVHZ SEPARATION FROM GLASS IS NOT REQUIRED UNLESS LOCAL MUNICIPALITY ADOPTS ADDITIONAL CRITERIA.

VISIT [ECALC.IO/26176](https://ecalculator.com/26176)

FOR SITE SPECIFIC DEVIATIONS  
& MORE INFORMATION ABOUT THIS DOCUMENT  
OR SCAN THIS QR CODE

VISIT [ENGINEERINGEXPRESS.COM/STORE](https://engineeringexpress.com/store)  
FOR ADDITIONAL PLANS, REPORTS & RESOURCES



**1 SINGLE PANEL SPAN**  
1 N.T.S. EXTER. ELEVATION

**2 MULTI PANEL SPAN**  
1 N.T.S. EXTER. ELEVATION



IN LIEU OF Z-BAR/ANGLE CLIPS, A 1"X2"X1/8" CONTINUOUS ALUM ANGLE MAY BE USED AT FULL LENGTH OF SHUTTER SILL ATTACHED TO HOST WITH SCREWS AT 12" O.C. PER ANCHOR NOTE 1 SCHEDULE. ANGLE SHALL ATTACH TO SHUTTER W/ #12 MIN. SAE GR 5 OR SS SMS AT 12" O.C., TYP

TABLE 1			
HVHZ			
ALLOWABLE DESIGN PRESSURES			
MAX SHUTTER SPAN	CONFIGURATION		
	SINGLE PANEL SPAN	MULTI PANEL SPAN	
		W/O BEAM	W/ BEAM
69"	+60/-73 PSF	+60/-73 PSF*	+60/-73 PSF*
81 5/8"	+60/-73 PSF	-	+60/-73 PSF*
96 3/4"	+60/-73 PSF*	-	+60/-73 PSF*

\*NOTE: LIMITED TO A MAX SLAT SPAN OF 38"

TABLE 3			
NON-HVHZ			
ALLOWABLE DESIGN PRESSURES			
MAX SHUTTER SPAN	CONFIGURATION		
	SINGLE PANEL SPAN	MULTI PANEL SPAN	
		W/O BEAM	W/ BEAM
69"	+78/-95 PSF	+78/-95 PSF*	+78/-95 PSF*
81 5/8"	+78/-95 PSF	+50/-50 PSF†*	+78/-95 PSF*
96 3/4"	+78/-95 PSF*	+50/-50 PSF†*	+78/-95 PSF*

\*NOTE: LIMITED TO A MAX SLAT SPAN OF 38"

†NOTE: NOT APPROVED FOR USE IN ESSENTIAL FACILITIES.

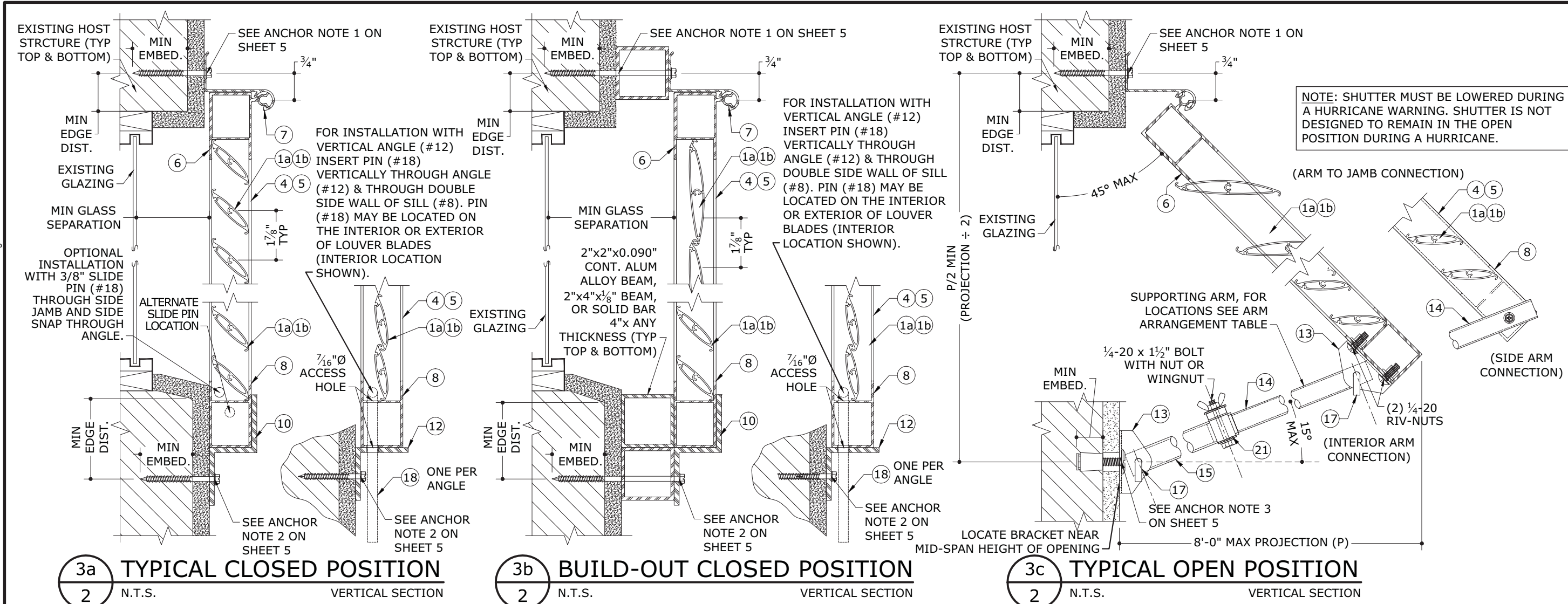
TABLE 2				
HVHZ				
MINIMUM SEPARATION FROM GLASS				
MAX SHUTTER SPAN	DESIGN PRESSURE	CONFIGURATION		
		SINGLE PANEL SPAN	MULTI PANEL SPAN	
			W/O BEAM	W/ BEAM
69"	+56/-73 PSF	2 3/8"	3"	2 3/8"
69"	+60/-73 PSF	2 3/8"	3 1/4"	2 3/8"
81 5/8"	+60/-73 PSF	2 3/8"	-	2 3/8"
96 3/4"	+60/-73 PSF	2 3/8"*	-	2 3/8"

\*NOTE: LIMITED TO A MAX SLAT SPAN OF 38"

TABLE 4				
NON-HVHZ				
NOT REQUIRED FOR WIND ZONES 1-3				
MINIMUM SEPARATION FROM GLASS				
MAX SHUTTER SPAN	DESIGN PRESSURE	CONFIGURATION		
		SINGLE PANEL SPAN	MULTI PANEL SPAN	
			W/O BEAM	W/ BEAM
69"	+78/-95 PSF	3 7/8"	4 3/8"	2 7/8"
81 5/8"	+78/-95 PSF	3 7/8"	-	2 7/8"
96 3/4"	+78/-95 PSF	2 7/8"*	-	2 7/8"

\*NOTE: LIMITED TO A MAX SLAT SPAN OF 38"

C:\Users\rickn\Engineering\Express\Production - Documents\Projects\20-26176 - FL13434.1 - Fullview Bahama Shutter\WP\2020 FBC\20-26176d - FL13434.1 - DWG.dwg  
08/12/2020 - 4:44pm  
rickn



FOR INSTALLATION WITH VERTICAL ANGLE (#12) INSERT PIN (#18) VERTICALLY THROUGH ANGLE (#12) & THROUGH DOUBLE SIDE WALL OF SILL (#8). PIN (#18) MAY BE LOCATED ON THE INTERIOR OR EXTERIOR OF LOUVER BLADES (INTERIOR LOCATION SHOWN).

NOTE: SHUTTER MUST BE LOWERED DURING A HURRICANE WARNING. SHUTTER IS NOT DESIGNED TO REMAIN IN THE OPEN POSITION DURING A HURRICANE.

P/2 MIN (PROJECTION ÷ 2)

(SIDE ARM CONNECTION)

(INTERIOR ARM CONNECTION)

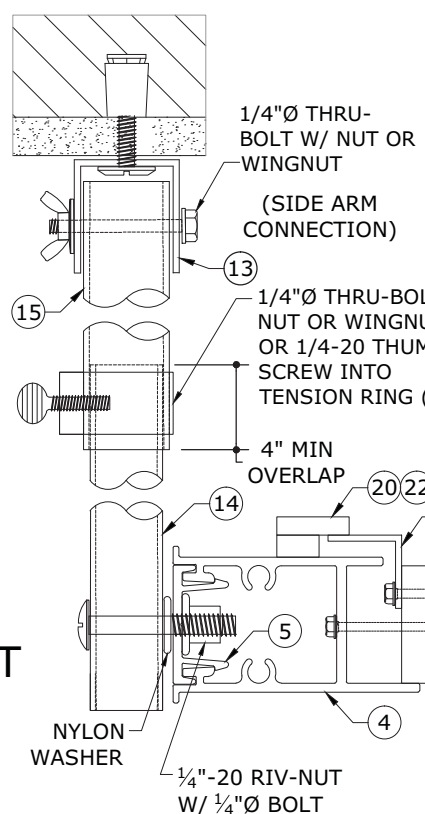
LOCATE BRACKET NEAR MID-SPAN HEIGHT OF OPENING

ARM ARRANGEMENT TABLE		
CONFIGURATION	SIDE ARMS	INTERIOR ARMS
(1 OR 2 PANELS)	(1) EACH SIDE	NONE
(3-PANEL) <85"	(1) EACH SIDE	NONE
(3-PANEL OR GREATER) >85"	(1) EACH SIDE	(1) @ EACH INTERIOR MULLION JOINT

NO MINIMUM SEPARATION FROM GLASS REQUIRED FOR USE OUTSIDE THE HVHZ UNLESS LOCAL MUNICIPALITY ADOPTS ADDITIONAL CRITERIA.

FASTENED WITH 1/4" RIVNUT AND BOLT. MAY BE LOCATED AT REAR (AS SHOWN) OR BOTTOM OF SHUTTER. WHEN LOCATED AT BOTTOM, BRACKET MAY BE OFFSET FROM CENTERLINE OF VERTICAL MULLION TO ALLOW FOR 'Z' BAR OR ANGLE IN CLOSED POSITION.

#6 x 1/2" HWH 18-8 MIN. STAINLESS STEEL



4 TYPICAL PLAN VIEW  
2 N.T.S. HORIZONTAL SECTION

FRANK BENNARDO, PE  
PE# 0046549 CA#9885

01/07/2025

ENGINEERING  
EXPRESS

CORPORATE OFFICE:  
160 SW 12th AVE, SUITE 106  
DEERFIELD BEACH, FL 33442  
(954) 354-0660 | (866) 396-9999  
TEAM@ENGINEERINGEXPRESS.COM  
ENGINEERINGEXPRESS.COM

Town Country INDUSTRIES

Wholesale Aluminum and Building Products  
A Division of ABC Supply Co., Inc.

400 WEST MCNAB ROAD  
FT. LAUDERDALE, FL 33309  
FL13434.1

REMARKS	DRWN	CHKD	DATE
INIT ISSUE	RKB	FLB	12/15/09
2010 FBC	CSL	KL	21/16/11
2014 FBC	RWN	CSL	4/04/15
2017 FBC	RWN	FLB	8/02/17
2020 FBC	CB	RWN	6/24/20

THIS DOCUMENT IS THE PROPERTY OF FRANK L. BENNARDO, P.E. AND SHALL NOT BE REPRODUCED OR TRANSMITTED IN ANY FORM OR BY ANY MEANS, ELECTRONIC OR MECHANICAL, INCLUDING PHOTOCOPYING, RECORDING, OR BY ANY INFORMATION STORAGE AND RETRIEVAL SYSTEM, WITHOUT THE WRITTEN PERMISSION OF FRANK L. BENNARDO, P.E. ANY ALTERATIONS, ADDITIONS, OR DELETIONS TO THIS DOCUMENT ARE NOT PERMITTED AND WILL INVALIDATE OUR CERTIFICATION.

COPYRIGHT FRANK L. BENNARDO P.E.

20-26176

SCALE: -

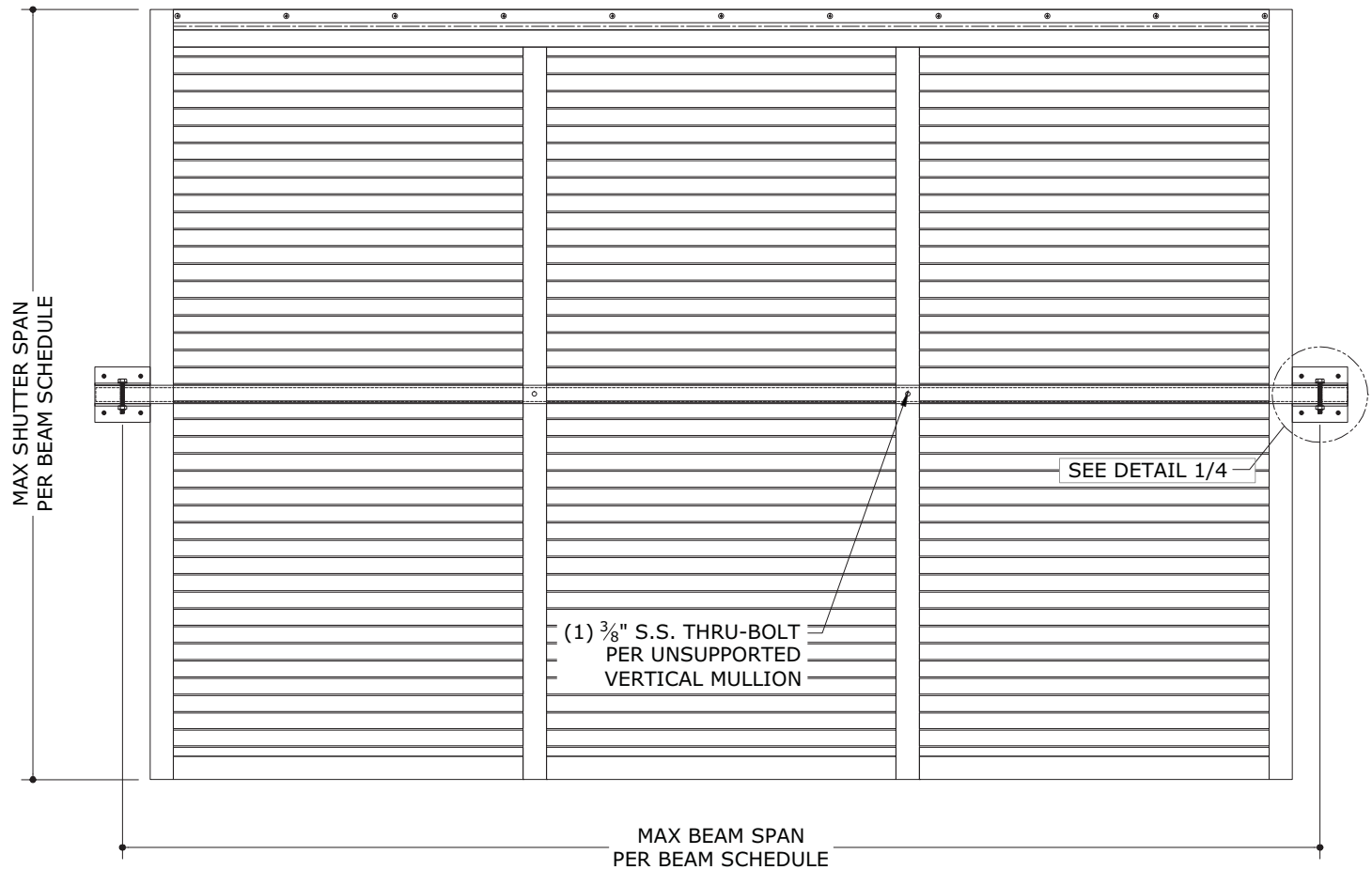
PAGE DESCRIPTION:

2

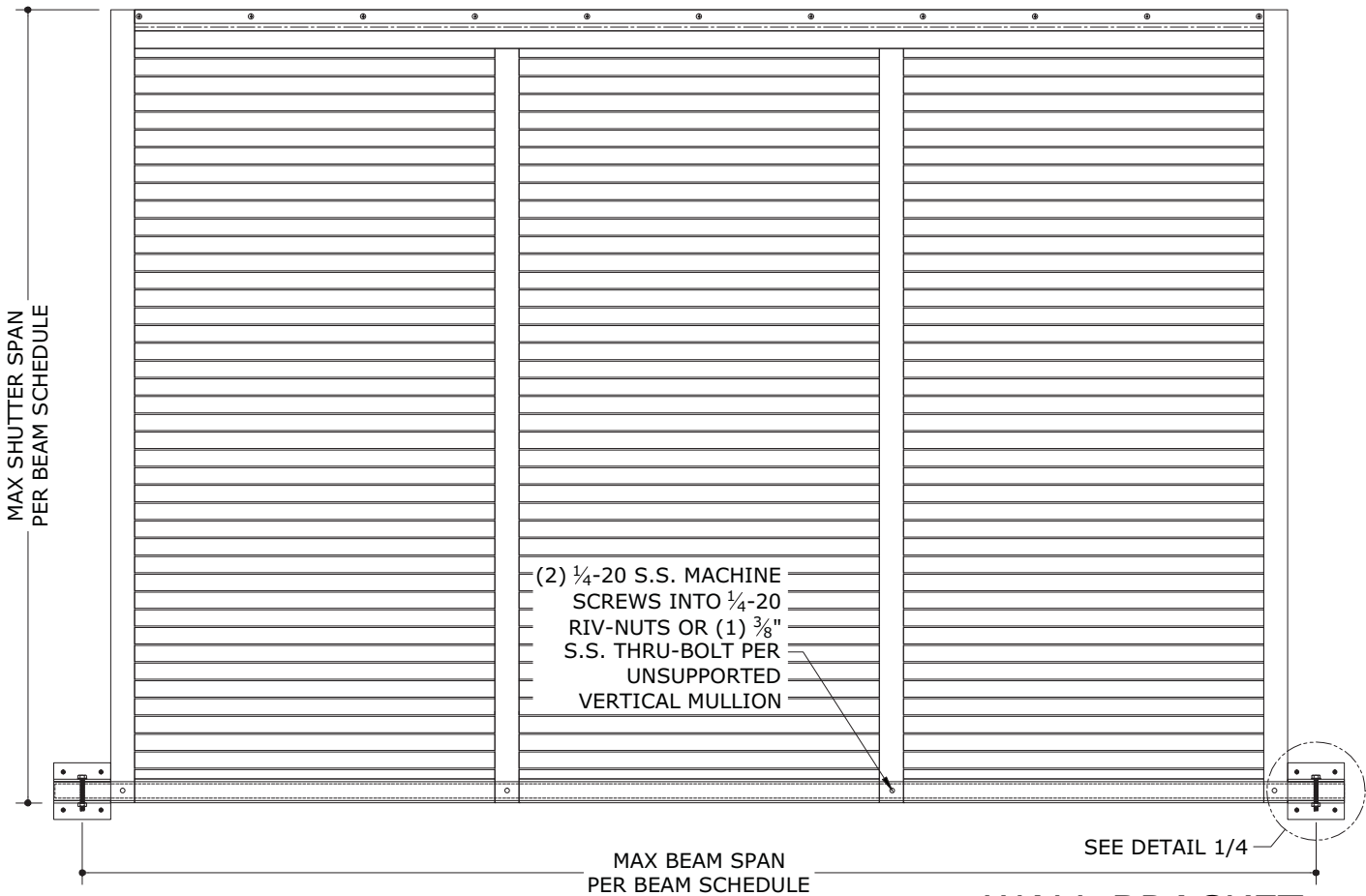
OF 6



C:\Users\nickn\Engineering Express\Production - Documents\Projects\20-26176 - FL13434.1 - Fullview Bahama Shutter\WP\2020 FBC\20-26176d - FL13434.1 - DWG.dwg  
08/12/2020 - 4:45pm  
nickn



1  
3 MID-SPAN BEAM (AS REQUIRED)  
N.T.S. EXTER. ELEVATION

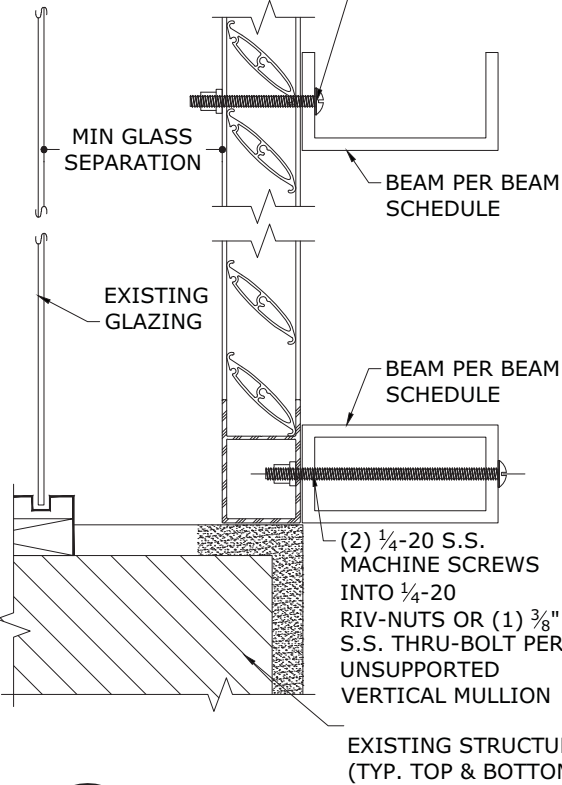


2  
3 BOTTOM BEAM (OPTIONAL)  
N.T.S. EXTER. ELEVATION

BEAM SCHEDULE:

	BEAM SIZE	ALUMINUM ALLOY	SHUTTER SPAN	BEAM SPAN (+/- 40 PSF MAX)	BEAM SPAN (+/- 50 PSF MAX)	BEAM SPAN (+/- 60 PSF MAX)	BEAM SPAN (+/- 95 PSF MAX)	WALL BRACKET ANCHOR TYPES (+/-95 PSF MAX)			WALL BRACKET ANCHOR TYPES (+/-50 PSF MAX)		
								CONCRETE	HOLLOW BLOCK	WOOD (G=0.42 MIN)	CONCRETE	HOLLOW BLOCK	WOOD (G=0.42 MIN)
BOX BEAMS	2"x3"x1/8"	6063-T6	8'-0"	7'-9"	7'-0"	6'-4"	5'-1"	A,B,C,D,E	A,C,	B,C	A,B,C,D,E	A,B,C,E	B,C
			6'-8"	8'-7"	7'-8"	7'-0"	5'-7"	A,B,C,D,E	A,C,E	B,C	A,B,C,D,E	A,B,C,E	B,C
			5'-10"	9'-2"	8'-2"	7'-6"	5'-11"	A,B,C,D,E	A,B,C,E	B,C	A,B,C,D,E	A,B,C,D,E	B,C
	2"x4"x1/8"	6063-T6	8'-0"	9'-7"	8'-7"	7'-10"	6'-3"	A,B,C,D,E	A,C,	B,C	A,B,C,D,E	A,C,E	B,C
			6'-8"	10'-6"	9'-5"	8'-7"	6'-10"	A,B,C,D,E	A,C,	B,C	A,B,C,D,E	A,B,C,E	B,C
			5'-10"	11'-3"	10'-1"	9'-2"	7'-4"	A,B,C,D,E	A,C,	B,C	A,B,C,D,E	A,B,C,E	B,C
	2"x5"x1/8"	6063-T6	8'-0"	11'-5"	10'-2"	9'-4"	7'-5"	A,B,C,D,E	A,C,		A,B,C,D,E	A,C,	B,C
			6'-8"	12'-6"	11'-2"	10'-2"	8'-1"	A,B,C,D,E	A,C,		A,B,C,D,E	A,C,	B,C
			5'-10"	13'-4"	11'-11"	10'-11"	8'-8"	A,B,C,D,E	A,C,	B,C	A,B,C,D,E	A,C,E	B,C
	2"x4"x1/4"	6061-T6	8'-0"	14'-10"	13'-3"	12'-2"	9'-8"	A,B,C,			A,B,C,D,E	A,C,	
			6'-8"	16'-3"	14'-7"	13'-3"	10'-7"	A,B,C,D,E			A,B,C,D,E	A,C,	
			5'-10"	17'-5"	15'-7"	14'-2"	11'-3"	A,B,C,D,E	A,		A,B,C,D,E	A,C,	B,C
C-CHANNEL BEAMS	4"x2"x0.23"x0.15"	6063-T6	8'-0"	9'-4"	8'-4"	7'-9"	6'-1"	A,B,C,D,E	A,C,	B,C	A,B,C,D,E	A,B,C,E	B,C
			6'-8"	10'-3"	9'-2"	8'-4"	6'-8"	A,B,C,D,E	A,C,	B,C	A,B,C,D,E	A,B,C,E	B,C
	6"x2"x0.29"x0.17"	6061-T6	8'-0"	10'-11"	9'-9"	8'-11"	7'-1"	A,B,C,D,E	A,C,	B,C	A,B,C,D,E	A,B,C,E	B,C

\*MILLENNIUM MILLFAST ANCHORS MUST BE SPACED AT 4" O.C. MINIMUM

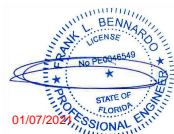


3  
3 BEAM CONNECTION TO SHUTTER  
N.T.S. VERTICAL SECTION

WALL BRACKET ANCHORS TYPES:

- **TYPE A:** 1/4-20 ALL POINT SOLID SET ANCHORS:
  - IN CONCRETE (3.35KSI MIN) WITH 7/8" MIN EMBED. AND 3" MIN EDGE DIST.
  - IN HOLLOW CONCRETE BLOCK WITH 7/8" MIN EMBED. AND 3" MIN EDGE DIST.
- **TYPE B:** 1/4-20 DEWALT PANELMATES (MALE/FEMALE):
  - IN CONCRETE (3.35KSI MIN) WITH 1 3/4" MIN EMBED. AND 2 1/2" MIN EDGE DIST.
  - IN HOLLOW CONCRETE BLOCK WITH 1 1/4" MIN EMBED. AND 2" MIN EDGE DIST.
  - IN WOOD (G=0.42 MIN) WITH 1 1/2" MIN EMBED. AND 3/4" MIN EDGE DIST.
- **TYPE C:** 1" EYEWALL ARMOR MALE OR FEMALE BOLTS:
  - IN CONCRETE (3.0KSI MIN) WITH 1 3/4" MIN EMBED. AND 2 1/2" MIN EDGE DIST.
  - IN HOLLOW CONCRETE BLOCK WITH 1 1/4" MIN EMBED. AND 2" MIN EDGE DIST.
  - IN WOOD (G=0.42 MIN) WITH 1 7/8" MIN EMBED. AND 3/4" MIN EDGE DIST.
- **TYPE D\*:** 1/4" MILLENNIUM MILLFAST W/ T&C ULTRACOTE:
  - IN CONCRETE (3.275KSI MIN) WITH 1 3/4" EMBED AND 2 1/2" EDGE DIST.
  - IN HOLLOW CONCRETE BLOCK WITH 1 1/4" EMBED. AND 2 1/2" MIN EDGE DIST.
- **TYPE E:** #12 SMS W/ 2" EYEWALL ARMOR NYLON INSERT:
  - IN CONCRETE (2KSI MIN) WITH 2" EMBED AND 2" EDGE DIST.
  - IN HOLLOW CONCRETE BLOCK WITH 1 1/4" EMBED AND 2" EDGE DIST.

FRANK BENNARDO, PE  
PE# 0046549 CA#9885



CORPORATE OFFICE:  
160 SW 12th AVE, SUITE 106  
DEERFIELD BEACH, FL 33442  
(954) 354-0660 | (866) 396-9999  
TEAM@ENGINEERINGEXPRESS.COM  
ENGINEERINGEXPRESS.COM

**Town & Country**  
INDUSTRIES  
Wholesale Aluminum and Building Products  
A Division of ABC Supply Co., Inc.

400 WEST MCNAB ROAD  
FT. LAUDERDALE, FL 33309

FL13434.1

REMARKS	DRWN	CHKD	DATE
INIT ISSUE	RKB	FLB	12/15/09
2010 FBC	CSL	KL	2/1/16/11
2014 FBC	RWN	CSL	4/04/15
2017 FBC	RWN	FLB	8/02/17
2020 FBC		CB	6/24/20

THIS DOCUMENT IS THE PROPERTY OF FRANK L. BENNARDO, P.E. AND SHALL NOT BE REPRODUCED OR TRANSMITTED IN ANY FORM OR BY ANY MEANS, ELECTRONIC OR MECHANICAL, INCLUDING PHOTOCOPYING, RECORDING, OR BY ANY INFORMATION STORAGE AND RETRIEVAL SYSTEM, WITHOUT THE WRITTEN PERMISSION OF FRANK L. BENNARDO, P.E. \* ALTERATIONS, ADDITIONS, HIGHLIGHTS OR OTHER MARKINGS TO THIS DOCUMENT ARE NOT PERMITTED AND INVALIDATE OUR CERTIFICATION.

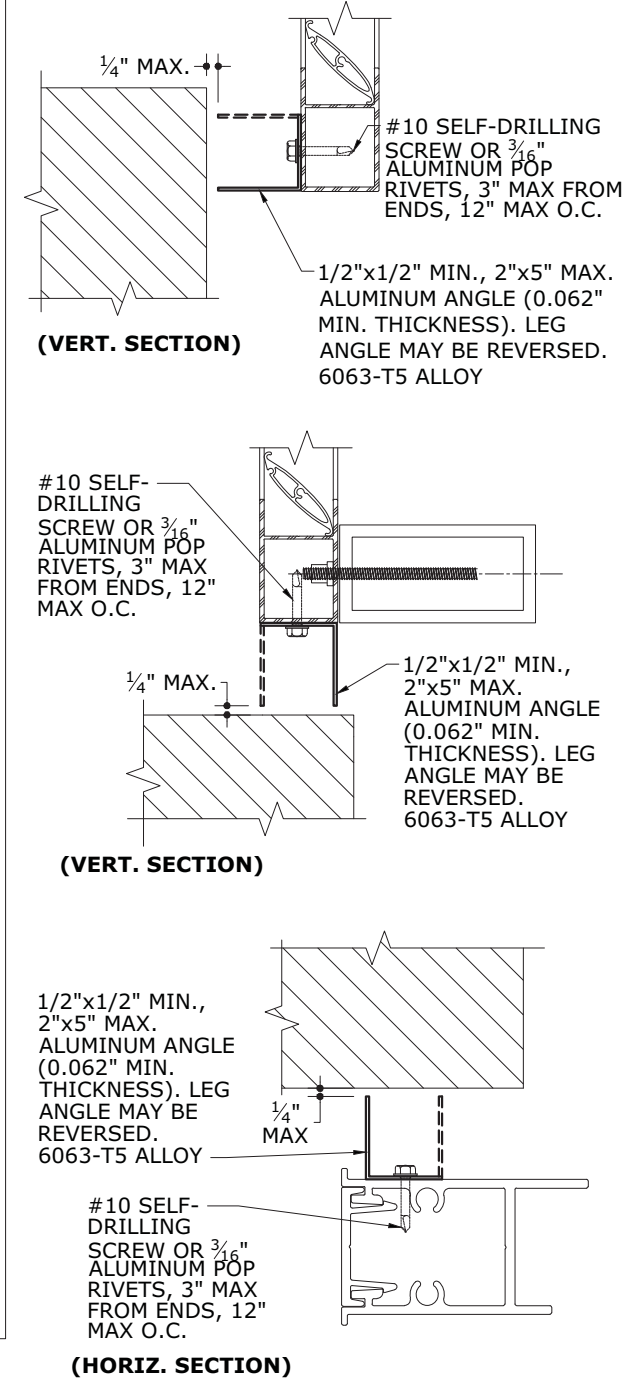
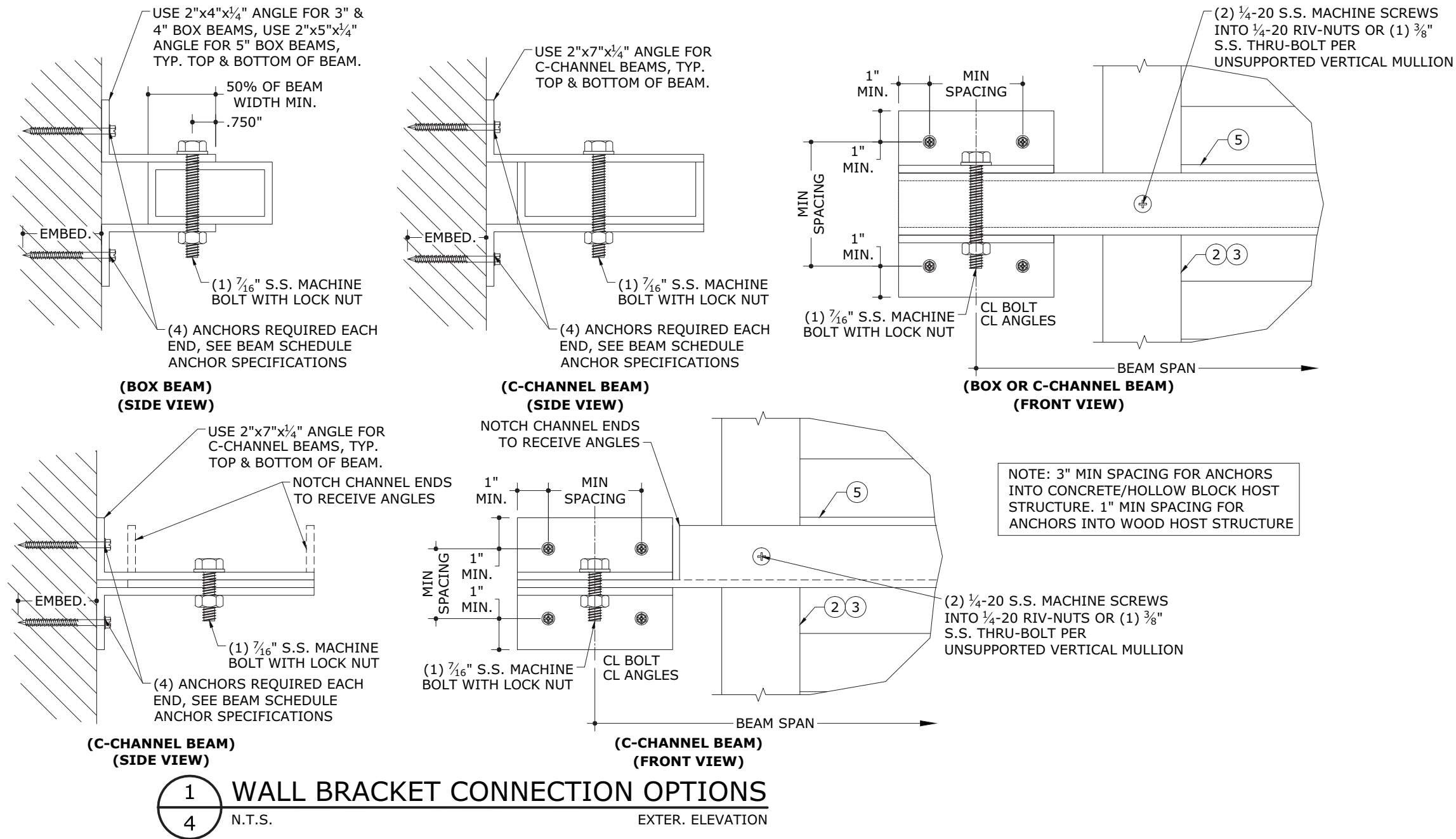
COPYRIGHT FRANK L. BENNARDO P.E.

20-26176

SCALE: -  
PAGE DESCRIPTION:

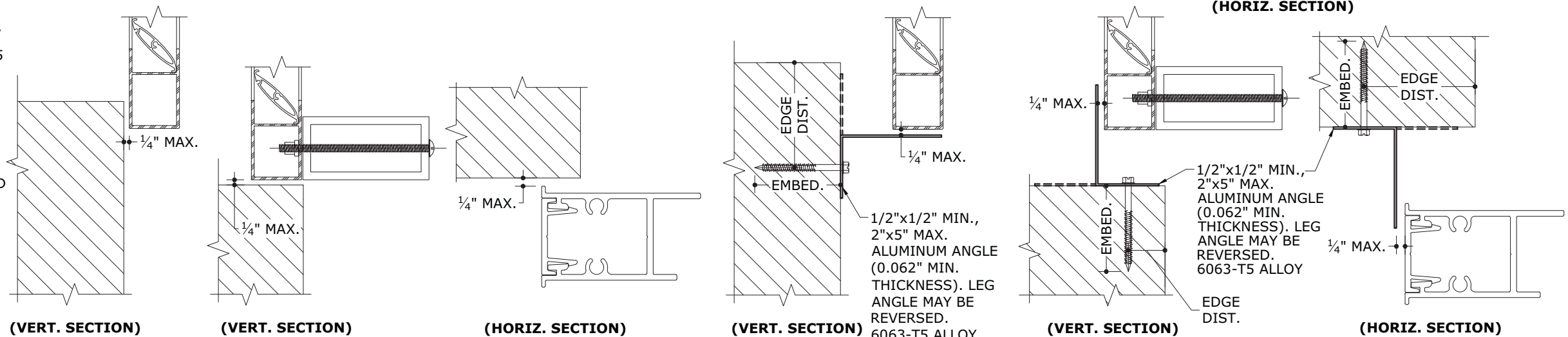
3

C:\Users\rickn\Engineering\Express\Production - Documents\Projects\20-26176 - FL13434.1 - Fullview Bahama Shutter\WP\2020 FBC\20-26176d - FL13434.1 - DWG.dwg  
08/12/2020 - 4:45pm  
rickn



#### SIDE CLOSURE NOTES

- FOR INSTALLATIONS WITHIN THE HVHZ, IN LIEU OF SIDE CLOSURE ANGLE, SHUTTER MAY OVERLAP OPENING BY 1.5 X SHUTTER BUILD OUT DISTANCE.
- ANCHORS MAY BE ANY ANCHOR FROM ANCHOR NOTE 1, ON SHEET 5, INSTALLED 3" MAX FROM EACH END, AND 12" O.C. MAX, OR 1/4" ITW TAPCONS WITH 1 1/2" MIN EDGE DISTANCE AND FULL THREAD ENGAGEMENT TO 1/16" MIN PLYWOOD INSTALLED 3" MAX FROM EACH END AND 7" O.C. MAX.
- ANCHORS SHALL BE INSTALLED IN ACCORDANCE WITH MANUFACTURERS' RECOMMENDATIONS.
- ALL CONCRETE ANCHORS SHALL BE INSTALLED TO NON-CRACKED CONCRETE ONLY.
- MINIMUM EMBEDMENT SHALL BE AS NOTED IN ANCHOR NOTE 1 ON SHEET 5. MINIMUM EMBEDMENT AND EDGE DISTANCE EXCLUDES STUCCO, FOAM, BRICK, AND OTHER WALL FINISHES.
- WHERE EXISTING STRUCTURE IS WOOD FRAMING, EXISTING CONDITIONS MAY VARY. FIELD VERIFY THAT FASTENERS ARE INTO ADEQUATE WOOD FRAMING MEMBERS, NOT INTO PLYWOOD.



FRANK BENNARDO, PE  
PE# 0046549 CA#9885

ENGINEERING  
EXPRESS

CORPORATE OFFICE:  
160 SW 12th AVE, SUITE 106  
DEERFIELD BEACH, FL 33442  
(954) 354-0660 | (866) 396-9999  
TEAM@ENGINEERINGEXPRESS.COM  
ENGINEERINGEXPRESS.COM

Town Country  
INDUSTRIES

Wholesale Aluminum and Building Products  
A Division of ABC Supply Co., Inc.  
400 WEST MCNAB ROAD  
FT. LAUDERDALE, FL 33309  
FL13434.1

REMARKS	DRWN	CHKD	DATE
INIT ISSUE	RKB	FLB	12/15/09
2010 FBC	CSL	KL	2/1/16/11
2014 FBC	RWN	CSL	4/04/15
2017 FBC	RWN	FLB	8/02/17
2020 FBC	CB	RWN	6/24/20

THIS DOCUMENT IS THE PROPERTY OF FRANK L. BENNARDO, P.E. AND SHALL NOT BE REPRODUCED OR TRANSMITTED IN ANY FORM OR BY ANY MEANS, ELECTRONIC OR MECHANICAL, INCLUDING PHOTOCOPYING, RECORDING, OR BY ANY INFORMATION STORAGE AND RETRIEVAL SYSTEM, WITHOUT THE WRITTEN PERMISSION OF FRANK L. BENNARDO, P.E. ANY VIOLATION OF THIS POLICY IS STRICTLY PROHIBITED AND WILL BE PUNISHED TO THE FULL EXTENT OF THE LAW.

20-26176

SCALE: -

PAGE DESCRIPTION:

4

OF 6

ANCHOR NOTE 1: UNLESS NOTED OTHERWISE BELOW, ANCHORS AT 3" FROM ENDS AND 12" O.C. MAX  
(CHOOSE ONE FROM BELOW)

- CONNECTION IN CONCRETE:  
- ¼" ITW TAPCON WITH 1¾" MIN EMBED. AND 2½" MIN EDGE DIST. (3.19KSI MIN CONC.)  
- ¼" DEWALT ULTRACON W/ 1 ¾" EMBED AND 2 ½" MIN. EDGE DIST. (3.0KSI MIN CONC.)  
- ¼" DEWALT PANELMATES (MALE/FEMALE) WITH 1¾" MIN EMBED. AND 2½" MIN EDGE DIST. (3.32KSI MIN CONC.)  
- ¼"-20 ALL POINTS SOLID SET ANCHOR WITH ⅞" MIN EMBED. AND 2" MIN EDGE DIST. (3.0KSI MIN CONC.)  
- ¼" MILLENIUM MILLFAST (W/ T&C ULTRACOTE) WITH 1¾" EMBED AND 2½" EDGE DIST. (3.275KSI MIN)  
- #12 SMS W/ 2" EYEWALL ARMOR NYLON INSERT W/ 2" EMBED AND 2" EDGE DIST (2 KSI MIN)
- CONNECTION IN HOLLOW CONCRETE BLOCK:  
- ¼" ITW TAPCON WITH 1¼" MIN EMBED. AND 2½" MIN EDGE DIST., SPACED AT 4" O.C. MAX.  
- ¼" DEWALT ULTRACON W/ 1 ¼" EMBED AND 2 ½" MIN. EDGE DIST.  
- ¼" DEWALT PANELMATES (MALE/FEMALE) WITH 1¼" MIN EMBED. AND 2½" MIN EDGE DIST., SPACED AT 6½" O.C. MAX.  
- ¼"-20 ALL POINTS SOLID SET ANCHOR WITH ⅞" MIN EMBED. AND 2" MIN EDGE DIST., SPACED AT 8⅞" O.C. MAX.  
- ¼" MILLENIUM MILLFAST (W/ T&C ULTRACOTE) WITH 1¼" EMBED AND 2½" EDGE DIST., SPACED AT 4½" O.C MAX  
- #12 SMS W/ 2" EYEWALL ARMOR NYLON INSERT W/ 1¼" EMBED AND 2" EDGE DIST., SPACED AT 7" O.C. MAX
- CONNECTION IN WOOD (G=0.42 MIN):  
- ¼" LAG SCREW WITH 1½" MIN EMBED. AND ¾" MIN EDGE DIST.  
- #14 SHEET METAL SCREW WITH 1½" MIN EMBED. AND ¾" MIN EDGE DIST.

ANCHOR NOTE 2: CHOOSE ONE ANCHOR TYPE FROM BELOW, INSTALL QTY SHOWN

- CONNECTION IN CONCRETE:  
- (2) ¼" ITW TAPCON WITH 1¾" MIN EMBED. AND 2½" MIN EDGE DIST. (3.19KSI MIN CONC.)  
- (2) ¼" DEWALT PANELMATES (MALE/FEMALE) WITH 1¾" MIN EMBED. AND 2½" MIN EDGE DIST. (3.32KSI MIN CONC.)  
- (2) ¼"-20 ALL POINTS SOLID SET ANCHOR WITH ⅞" MIN EMBED. AND 2" MIN EDGE DIST. (3.0KSI MIN CONC.)  
- (2) ¼" MILLENIUM MILLFAST (W/ T&C ULTRACOTE) WITH 1¾" EMBED AND 2½" EDGE DIST. (3.275KSI MIN)  
- (2) #12 SMS W/ 2" EYEWALL ARMOR NYLON INSERT W/ 2" EMBED AND 2" EDGE DIST (2 KSI MIN)  
*NOTE: ALL 69" MAXIMUM SHUTTER SPAN INSTALLATIONS WITH MULTI-PANEL SPANS WITHOUT STORM BARS AT -95PSF REQUIRE A QUANTITY OF (3) ANCHORS FROM THE OPTIONS ABOVE*
- CONNECTION IN WOOD (G=0.42 MIN):  
- (2) ¼" EYEWALL ARMOR MALE OR FEMALE BOLT WITH 1⅞" MIN EMBED. AND ¾" MIN EDGE DIST.  
- (3) ¼" DEWALT PANELMATE (MALE/FEMALE) WITH 1⅞" MIN EMBED. AND ¾" MIN EDGE DIST.  
- (2) ¼" STAINLESS STEEL HANGER BOLT WITH 1¼" MIN EMBED. AND ¾" MIN EDGE DIST.  
*NOTE: ALL 69" MAXIMUM SHUTTER SPAN INSTALLATIONS WITH MULTI-PANEL SPANS WITHOUT STORM BARS AT -95PSF REQUIRE A QUANTITY OF (3) ANCHORS FROM THE OPTIONS ABOVE*
- CONNECTION IN HOLLOW CONCRETE BLOCK\*\*:  
•• SEE ANCHOR SCHEDULE BELOW FOR APPLICABILITY OF ANCHORS TO BE INSTALLED. EACH HOLLOW CONCRETE BLOCK ANCHOR IS CLASSIFIED WITH A LETTER AS SHOWN BELOW ACCOMPANIED BY A NUMBER INDICATING THE QUANTITY OF ANCHORS REQUIRED FOR INSTALLATION. THE DESIGN TABLE ILLUSTRATED BELOW APPLIES TO HOLLOW CONCRETE BLOCK ANCHORS ONLY.  
- TYPE (w) : ¼" ITW TAPCON WITH 1¼" MIN EMBED. AND 2½" MIN EDGE DIST.  
- TYPE (x) : ¼" EYEWALL ARMOR MALE OR FEMALE BOLT W/ 1¼" MIN EMBED. AND 2½" MIN EDGE DIST.  
- TYPE (y) : ¼" DEWALT PANELMATES (MALE/FEMALE) WITH 1¼" MIN EMBED. AND 2½" MIN EDGE DIST.  
- TYPE (z) : ¼"-20 ALL POINTS SOLID SET ANCHOR WITH ⅞" MIN EMBED. AND 2" MIN EDGE DIST.  
- TYPE (u) : ¼" MILLENIUM MILLFAST (W/ T&C ULTRACOTE) WITH 1¼" EMBED AND 2½" EDGE DIST.  
- TYPE (v) : #12 SMS W/ 2" EYEWALL ARMOR NYLON INSERT W/ 1¼" EMBED AND 2" EDGE DIST

MAX (-) PRESSURE	69" MAXIMUM SHUTTER SPAN			81-5/8" MAXIMUM SHUTTER SPAN			96-3/4" MAXIMUM SHUTTER SPAN		
	SINGLE PANEL SPAN	MULTI-PANEL SPAN		SINGLE PANEL	MULTI-PANEL SPAN		SINGLE PANEL	MULTI-PANEL SPAN	
		W/O BAR	W/BAR		W/O BAR	W/BAR		W/O BAR	W/BAR
-50 PSF	(w3) (x2) (y2) (z2) (u3) (v2)	(x2) (y3) (z2) (v2)	(w2) (x2) (y2) (z2) (u2) (v2)	(x2) (y2) (z2) (u3) (v2)	(x2) (y3) (z2) (v3)	(w3) (x2) (y2) (z2) (u2) (v2)	(w3) (x2) (y2) (z2) (u3) (v2)	(x2) (z3) (v3)	(w3) (x2) (y2) (z2) (u3) (v2)
-60 PSF	(x2) (y3) (z2) (u3) (v2)	(x2) (y3) (z2) (v3)	(w3) (x2) (y2) (z2) (u2) (v2)	(x2) (y3) (z2) (v3)	N/A	(w3) (x2) (y2) (z2) (u3) (v2)	(w3) (x2) (y2) (z2) (u3) (v2)	N/A	(w3) (x2) (y2) (z2) (u3) (v2)
-70 PSF	(x2) (y3) (z2) (v3)	(x2) (z3) (v3)	(w3) (x2) (y2) (z2) (u3) (v2)	(x2) (y3) (z3) (v3)	N/A	(w3) (x2) (y2) (z2) (u3) (v2)	(x2) (y3) (z2) (v2)	N/A	(x2) (y3) (z2) (v2)
-95 PSF	(x2) (z3) (v3)	(x3)	(x2) (y3) (z2) (u3) (v2)	(x3) (z3)	N/A	(x2) (y3) (z2) (v3)	(x2) (y3) (z3) (v3)	N/A	(x2) (y3) (z3) (v3)

\*\*HOLLOW BLOCK ANCHOR SCHEDULE KEY: w3 = ANCHOR TYPE "w" WITH "3" ANCHORS.

ANCHOR NOTE 3: CHOOSE ONE ANCHOR TYPE FROM BELOW, INSTALL QTY SHOWN

- CONNECTION IN CONCRETE:  
- (1) ¼" ITW TAPCON WITH 1¾" MIN EMBED. AND 2½" MIN EDGE DIST. (3.19KSI MIN CONC.)  
- (1) ¼" DEWALT ULTRACON WITH 1¾" MIN EMBED. AND 2½" MIN EDGE DIST. (3.0KSI MIN CONC.)  
- (1) ¼"-20 ALL POINTS SOLID SET ANCHOR WITH ⅞" MIN EMBED. AND 3" MIN EDGE DIST. (3.0KSI MIN CONC.)  
- (1) ¼" MILLENIUM MILLFAST (W/ T&C ULTRACOTE) WITH 1¾" EMBED AND 2½" EDGE DIST. (3.275KSI MIN)  
- (1) #12 SMS W/ 2" EYEWALL ARMOR NYLON INSERT W/ 2" EMBED AND 2" EDGE DIST (2 KSI MIN)
- CONNECTION IN HOLLOW CONCRETE BLOCK:  
- (2) ¼" DEWALT ULTRACONS WITH 1¼" MIN EMBED. AND 2½" MIN EDGE DIST.  
- (2) ¼"-20 ALL POINTS SOLID SET ANCHOR WITH ⅞" MIN EMBED. AND 3" MIN EDGE DIST.  
- (2) ¼" MILLENIUM MILLFAST (W/ T&C ULTRACOTE) WITH 1¾" EMBED AND 2½" EDGE DIST. (3.275KSI MIN)  
- (2) #12 SMS W/ 2" EYEWALL ARMOR NYLON INSERT W/ 2" EMBED AND 2" EDGE DIST (2 KSI MIN)
- CONNECTION IN WOOD (G=0.42 MIN):  
- (1) ¼" LAG SCREW WITH 1½" MIN EMBED. AND ¾" MIN EDGE DIST.  
- (1) #14 SHEET METAL SCREW WITH 1½" MIN EMBED. AND ¾" MIN EDGE DIST.

FRANK BENNARDO, PE  
PE# 0046549 CA#9885



ENGINEERING  
**EXPRESS**

CORPORATE OFFICE:  
160 SW 12th AVE, SUITE 106  
DEERFIELD BEACH, FL 33442  
(954) 354-0660 | (866) 396-9999  
TEAM@ENGINEERINGEXPRESS.COM  
ENGINEERINGEXPRESS.COM

Town & Country  
INDUSTRIES  
Wholesale Aluminum and Building Products  
A Division of ABC Supply Co., Inc.

400 WEST MCNAB ROAD  
FT. LAUDERDALE, FL 33309  
FL13434.1

REMARKS	DRWN	CHKD	DATE
	RKB	FLB	12/15/09
	CSL	KL	21/16/11
	RWN	CSL	4/04/15
	RWN	FLB	8/02/17
	CB	RWN	6/24/20
THIS DOCUMENT IS THE PROPERTY OF FRANK L. BENNARDO, P.E. AND SHALL NOT BE REPRODUCED OR TRANSMITTED IN ANY FORM OR BY ANY MEANS, WITHOUT THE WRITTEN PERMISSION OF FRANK L. BENNARDO, P.E. * ALTERATIONS, ADDITIONS, HIGHLIGHTS OR OTHER MARKINGS TO THIS DOCUMENT ARE NOT PERMITTED AND INVALIDATE OUR CERTIFICATION.			

COPYRIGHT FRANK L. BENNARDO P.E.

20-26176

SCALE: -  
PAGE DESCRIPTION:



