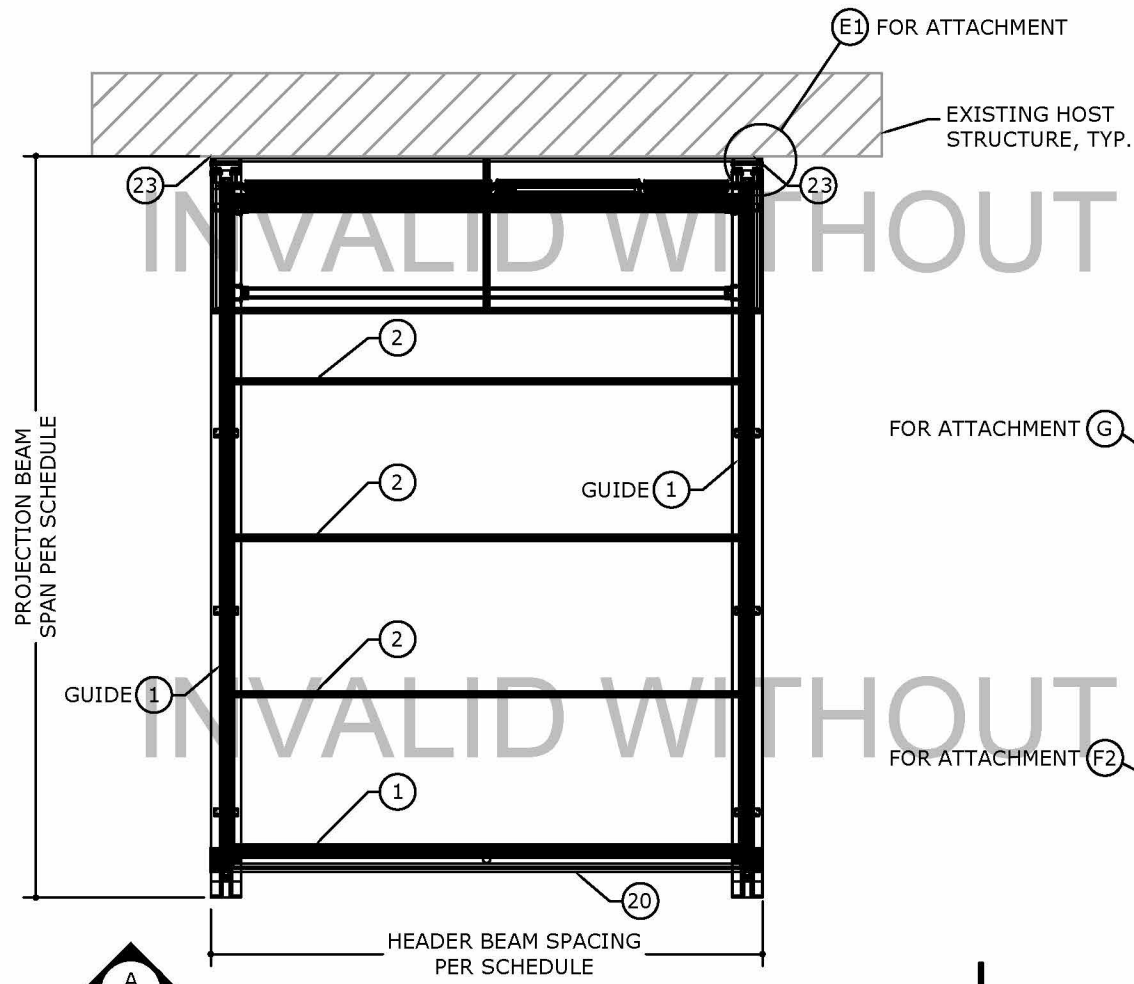


C:\Users\colby\Engineering Express\Production - Documents\Projects\20-35090 KE Durasol Gemini System\VPDrawings & CAD\20-35091c - L1S\20-35091c - L1S Durasol Gemini System\Perigola.dwg		colby	04/28/2021 9:22am
--	--	-------	-------------------

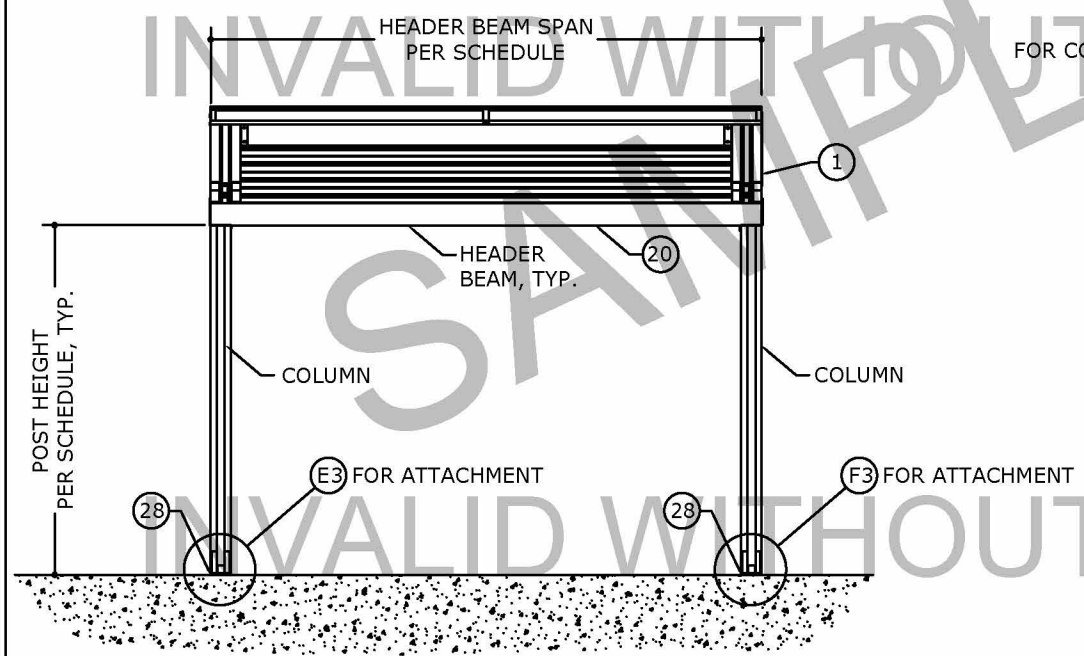
## 1



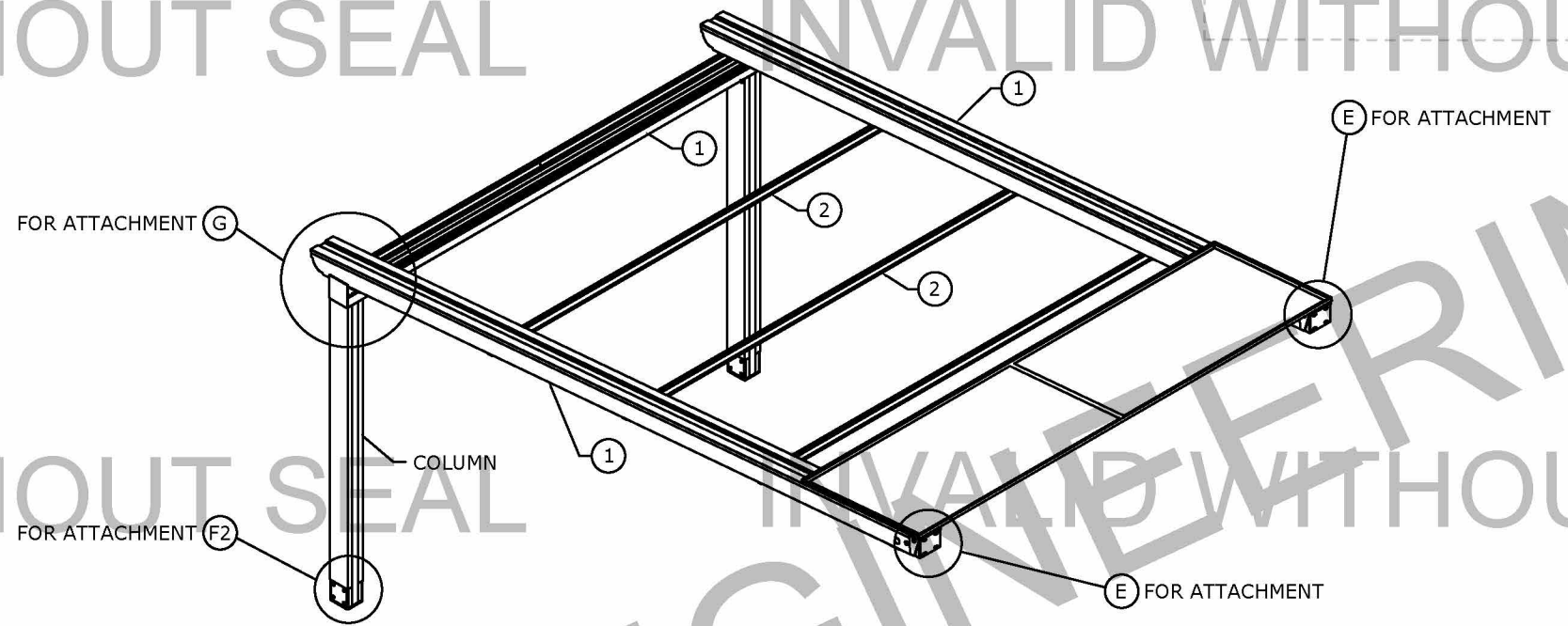
C:\Users\oolby\Engineering\Express\Production - Documents\Projects\20-35090 KE Durasol Genius Pergola System\WP\Drawings & CAD\20-35091 - L1S\20-35091c - L1S Durasol Genius Pergola.dwg  
04/28/2021 - 9:23am  
oolby



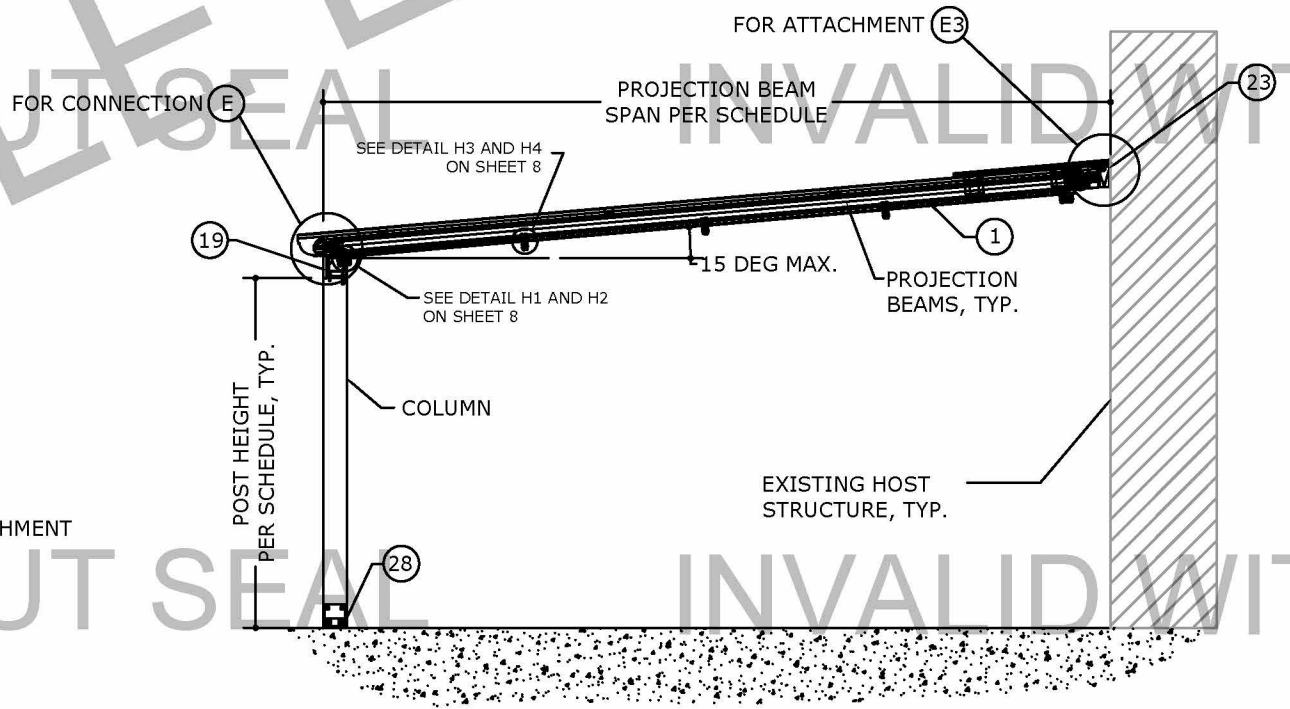
1 HOST MOUNTED PERGOLA PLAN  
2 1/4" = 1'-0" PLAN VIEW



2 PERGOLA FRONT ELEVATION  
B 1/4" = 1'-0" ELEVATION



4 HOST MOUNTED PERGOLA SIDE 3D  
D 1/4" = 1'-0" ELEVATION



3 HOST MOUNTED PERGOLA SIDE ELEVATION  
C 1/4" = 1'-0" ELEVATION

COPIES NOT VALID FOR PERMIT  
COPIES NOT VALID FOR PERMIT

PE SEAL  
REQUIRED  
CERTIFYING ENGINEER AND CERT  
OF AUTH AS LISTED ON STAMP  
VALID FOR 1 PERMIT ONLY U.N.O.

DIGITAL SEAL NOTICE:  
IF THIS DOCUMENT IS DIGITALLY  
SIGNED, THIS SHEET IS PART OF A  
DIGITALLY SIGNED FILE. IT SHALL  
REMAIN IN DIGITAL FORMAT, SHALL  
BE VERIFIED BY ELECTRONIC MEANS,  
& PRINTED COPIES OF THIS  
DOCUMENT ARE NOT CONSIDERED  
SIGNED AND SEALED.  
PRINTED DOCUMENT NOTICE:  
IF THIS DOCUMENT IS PRINTED &  
DOES NOT CONTAIN AN ENGINEER'S  
ORIGINAL SIGNATURE & SEAL, THIS  
DOCUMENT IS VOID & NOT VALID FOR  
USE. PHOTOCOPIES ARE NOT  
PERMITTED FOR USE.

ENGINEERING  
EXPRESS®  
CORPORATE OFFICE:  
160 SW 12th AVE, SUITE 106  
DEERFIELD BEACH, FL 33442  
(954) 354-0660 | (866) 396-9999  
TEAM@ENGINEERINGEXPRESS.COM  
ENGINEERINGEXPRESS.COM

KE USA INC  
38 POND LN, STE B  
MIDDLEBURY, VT  
(802) 388-7309  
KE DURASOL  
GENIUS PERGOLA SYSTEMS  
L1S MODEL MASTER PLAN

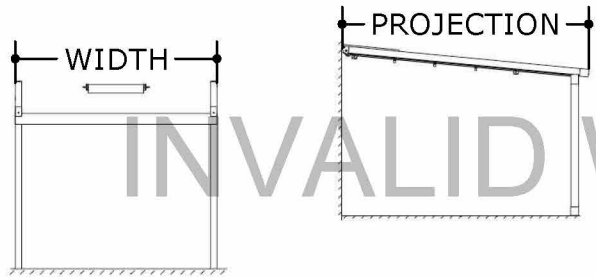
REMARKS	DRWN	CHKD	DATE
INIT ISSUE	MCC	JCF	4/27/16
2020 REC	CCB	FLB	3/05/21

THIS DOCUMENT IS THE PROPERTY OF ENGINEERING EXPRESS,  
AND SHALL NOT BE REPRODUCED IN WHOLE OR PART WITHOUT  
WRITTEN CONSENT OF ENGINEERING EXPRESS. ALTERATIONS,  
ADDITIONS, OR OTHER MARKINGS TO THIS DOCUMENT ARE NOT  
PERMITTED AND INVALIDATE OUR CERTIFICATION.

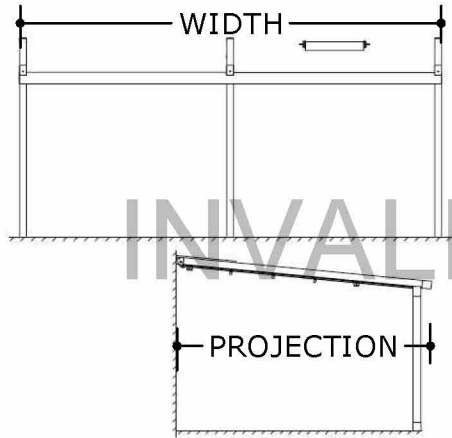
COPYRIGHT ENGINEERING EXPRESS®  
20-35091  
SCALE: NTS UNLESS NOTED  
2



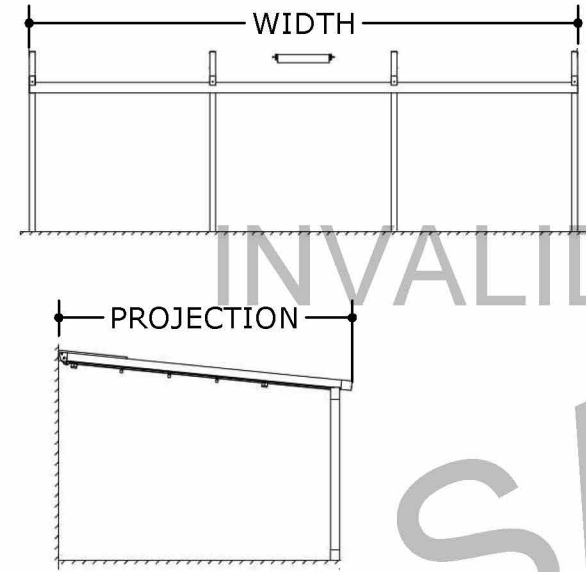
HOST MOUNTED CANOPY - ALLOWABLE WIND PRESSURE SCHEDULES



SCHEDULE 3: 3 GUIDES (2 BAYS)						
ALLOWABLE WIND PRESSURE (ASD) - PSF						
PROJECTION	TOTAL WIDTH					
	16'5"	18'1"	19'8"	21'4"	23'0"	24'7"
8'2"	± 4 PSF	± 4 PSF	± 4 PSF	± 4 PSF	± 4 PSF	± 4 PSF
9'10"	± 4 PSF	± 4 PSF	± 4 PSF	± 4 PSF	± 4 PSF	± 4 PSF
11'6"	± 3 PSF	± 3 PSF	± 3 PSF	± 3 PSF	± 3 PSF	± 3 PSF
13'1"	± 3 PSF	± 3 PSF	± 3 PSF	± 3 PSF	± 3 PSF	± 3 PSF
14'9"	± 2 PSF	± 2 PSF	± 2 PSF	± 2 PSF	± 2 PSF	± 2 PSF
16'5"	± 2 PSF	± 2 PSF	± 2 PSF	± 2 PSF	± 2 PSF	± 2 PSF
18'1"	± 2 PSF	± 2 PSF	± 2 PSF	± 2 PSF	± 2 PSF	± 2 PSF
19'8"	± 2 PSF	± 2 PSF	± 2 PSF	± 2 PSF	± 2 PSF	± 2 PSF



SCHEDULE 3: 3 GUIDES (2 BAYS)									
ALLOWABLE WIND PRESSURE (ASD) - PSF									
PROJECTION	TOTAL WIDTH								
	16' 5"	18' 1"	19' 8"	21' 4"	23' 0"	24' 7"	26' 3"	27' 10"	29' 6"
8'2"	± 8 PSF	± 8 PSF	± 8 PSF	± 8 PSF	± 8 PSF	± 7 PSF	± 7 PSF	± 6 PSF	± 6 PSF
9'10"	± 7 PSF	± 7 PSF	± 7 PSF	± 7 PSF	± 6 PSF	± 6 PSF	± 6 PSF	± 5 PSF	± 5 PSF
11'6"	± 6 PSF	± 6 PSF	± 6 PSF	± 6 PSF	± 5 PSF	± 5 PSF	± 5 PSF	± 4 PSF	± 4 PSF
13'1"	± 6 PSF	± 6 PSF	± 5 PSF	± 5 PSF	± 5 PSF	± 4 PSF	± 4 PSF	± 4 PSF	± 4 PSF
14'9"	± 5 PSF	± 5 PSF	± 4 PSF	± 4 PSF	± 4 PSF	± 4 PSF	± 4 PSF	± 3 PSF	± 3 PSF
16'5"	± 5 PSF	± 4 PSF	± 4 PSF	± 4 PSF	± 4 PSF	± 3 PSF	± 3 PSF	± 3 PSF	± 3 PSF
18'1"	± 4 PSF	± 4 PSF	± 4 PSF	± 4 PSF	± 3 PSF	± 3 PSF	± 3 PSF	± 3 PSF	± 2 PSF
19'8"	± 4 PSF	± 4 PSF	± 4 PSF	± 3 PSF	± 3 PSF	± 3 PSF	± 3 PSF	± 2 PSF	± 2 PSF



SCHEDULE 4: 4 GUIDES (3 BAYS)								
ALLOWABLE WIND PRESSURE (ASD) - PSF								
PROJECTION	TOTAL WIDTH							
	31' 2"	32' 9"	34' 5"	36' 1"	37' 8"	39' 4"	41' 0"	42' 8"
8'2"	± 9 PSF	± 8 PSF	± 8 PSF	± 7 PSF	± 7 PSF	± 7 PSF	± 6 PSF	± 6 PSF
9'10"	± 7 PSF	± 7 PSF	± 6 PSF	± 6 PSF	± 6 PSF	± 6 PSF	± 5 PSF	± 5 PSF
11'6"	± 6 PSF	± 6 PSF	± 5 PSF	± 5 PSF	± 5 PSF	± 5 PSF	± 4 PSF	± 4 PSF
13'1"	± 5 PSF	± 5 PSF	± 5 PSF	± 4 PSF	± 4 PSF	± 4 PSF	± 4 PSF	± 4 PSF
14'9"	± 5 PSF	± 4 PSF	± 4 PSF	± 4 PSF	± 4 PSF	± 4 PSF	± 3 PSF	± 3 PSF
16'5"	± 4 PSF	± 4 PSF	± 4 PSF	± 3 PSF	± 3 PSF	± 3 PSF	± 3 PSF	± 3 PSF
18'1"	± 4 PSF	± 3 PSF	± 3 PSF	± 3 PSF	± 3 PSF	± 3 PSF	± 3 PSF	± 3 PSF
19'8"	± 3 PSF	± 3 PSF	± 3 PSF	± 3 PSF	± 3 PSF	± 3 PSF	± 2 PSF	± 2 PSF

LOCATION	HOST STRUCTURE	DESIGNATION	DESCRIPTION	QUANTITY
WALL BRACKET TO HOST	3000 PSI CONCRETE	ANCHOR TYPE #1	DEWALT SCREW BOLT 3/8" DIAMETER CARBON STEEL W/ 2.5" EMBEDMENT INTO HOST, 3.3" SPACING, 6" EDGE DISTANCE	4
WALL BRACKET TO HOST	3000 PSI CONCRETE	ANCHOR TYPE #2	HILTI KWIK-BOLT 3 ANCHOR. 3/8" DIAMETER CARBON STEEL W/ 2" EMBEDMENT INTO HOST, 3.3" SPACING, 6" EDGE DISTANCE	4
WALL BRACKET TO HOST	WOOD #2 SYP (G=0.55)	ANCHOR TYPE #3	STAINLESS STEEL 3/8" DIAMETER WOOD LAG SCREW W/ 2.8" THREAD PENETRATION, 2" EDGE DISTANCE	4
LOCATION	HOST STRUCTURE	DESIGNATION	DESCRIPTION	QUANTITY
BASE BRACKET TO FOUNDATION	3000 PSI CONCRETE	ANCHOR TYPE #1	DEWALT SCREW BOLT 3/8" DIAMETER CARBON STEEL W/ 3.5" EMBEDMENT INTO HOST, 2.75" SPACING, 6" EDGE DISTANCE	2
BASE BRACKET TO FOUNDATION	3000 PSI CONCRETE	ANCHOR TYPE #2	HILTI KWIK-BOLT 3 ANCHOR. 3/8" DIAMETER CARBON STEEL W/ 3.5" EMBEDMENT INTO HOST, 2.75" SPACING, 6" EDGE DISTANCE	2

ANCHOR SCHEDULE

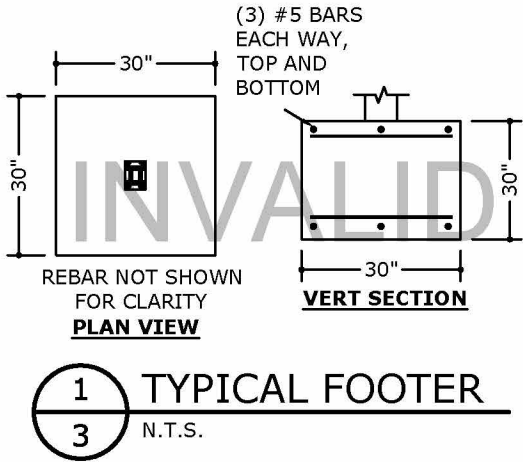
SCHEDULE 5: WIND SPEED TO DESIGN PRESSURE FOR HOST ATTACHED CANOPY (ASCE 7-16 CH 30.11)					
ULT WIND SPEED	ASCE EXPOSURE CATEGORY	CANOPY ATTACHED 1FT OR MORE BELOW EAVE		CANOPY ATTACHED 1FT OR LESS BELOW EAVE	
		ASD LOAD COMBINATION PRESSURE (+ / -)			
40 MPH	B	6.7 psf	-1.0 psf	6.7 psf	-1.0 psf
	C	6.7 psf	-1.0 psf	6.7 psf	-1.2 psf
50 MPH	B	7.1 psf	-1.0 psf	7.1 psf	-1.8 psf
	C	7.1 psf	-1.0 psf	7.1 psf	-1.8 psf
60 MPH	B	7.6 psf	-1.2 psf	7.6 psf	-3.0 psf
	C	7.6 psf	-1.2 psf	7.6 psf	-3.0 psf
70 MPH	B	8.0 psf	-1.8 psf	8.0 psf	-4.2 psf
	C	8.5 psf	-2.4 psf	8.5 psf	-4.8 psf
80 MPH	B	8.9 psf	-3.0 psf	8.9 psf	-5.4 psf
	C	8.9 psf	-3.0 psf	8.9 psf	-6.6 psf
90 MPH	B	9.4 psf	-3.6 psf	9.4 psf	-7.2 psf
	C	9.8 psf	-4.2 psf	9.8 psf	-8.4 psf
100 MPH	B	10.3 psf	-4.8 psf	10.3 psf	-9.0 psf
	C	10.7 psf	-5.4 psf	10.7 psf	-10.2 psf
110 MPH	B	11.2 psf	-6.0 psf	11.2 psf	-11.4 psf
	C	12.1 psf	-7.2 psf	12.1 psf	-12.6 psf
120 MPH	B	12.5 psf	-7.8 psf	12.5 psf	-13.8 psf
	C	13.0 psf	-8.4 psf	13.0 psf	-15.6 psf
130 MPH	B	13.4 psf	-9.0 psf	13.4 psf	-16.2 psf
	C	14.3 psf	-10.2 psf	14.3 psf	-18.0 psf

VISIT [ECALC.IO/WIND](https://ecalculator.io/wind)

TO ORDER ENGINEER-CERTIFIED WIND SPEED TO WIND PRESSURE CALCULATIONS FOR PERMIT USE OUR ONLINE CALCULATORS WITH BETTER ANSWERS

HELPFUL EXPLANATIONS & MORE WIND RESOURCES

OR SCAN THIS CODE



- FOOTER NOTES:
- PROVIDES THE REQUIRED FOOTER REINFORCEMENT FOR THE RESPECTIVE FOOTER SIZE.
  - REQUIRED REINFORCEMENT IS BASED ON 30" DEEP FOOTERS.
  - ALL REINFORCEMENT SHALL HAVE A MINIMUM CLEAR COVER OF 3".
  - ALL REINFORCEMENT SHALL BE DEFORMED BARS OF INTERMEDIATE GRADE NEW BILLET STEEL CONFORMING TO CURRENT REQUIREMENTS OF ASTM A615, GRADE 60 (U.N.O.), FREE FROM OIL, LOOSE SCALE AND LOOSE RUST; AND BENT, LAPPED, PLACED, SUPPORTED AND FASTENED ACCORDING TO THE "ACI DETAILING MANUAL" AND ACI 318. ALL STEEL SHALL BE SECURELY HELD IN PLACE DURING POURING OF CONCRETE. IF REQUIRED, ADDITIONAL BARS SHALL BE PROVIDED BY THE GENERAL CONTRACTOR TO FURNISH SUPPORT FOR ALL BARS ADHERE TO ALL JURISDICTIONS THAT REQUIRE FOOTINGS PLACED BELOW THE FROSTLINE. IN CASES THAT APPLY, THE BOTTOM 6" OF THICKENED EDGE MUST BE BELOW THE FROSTLINE OR DESIGNED PER ASCE 7-32.

COPIES NOT VALID FOR PERMIT

COPIES NOT VALID FOR PERMIT

- SCHEDULE 2-5 NOTES:**
- LOADING VALUES SHOWN ARE ASD LOAD COMBINATIONS WHICH REPRESENT ABSOLUTE MINIMUM DESIGN REQUIRED FOR THIS STRUCTURE. NOTE THAT DURING ANY WIND, RAIN, OR WEATHER EVENT, PERGOLA FABRIC IS TO BE RETRACTED.
  - LOAD COMBINATIONS CONSIDER ONLY A SELF IMPOSED DEAD LOAD OF +2 PSF & NO LIVE LOADING. NO 10PSF MINIMUM HAS BEEN ASSUMED HEREIN.
  - WIND PRESSURES ARE TO BE DETERMINED ON A SITE SPECIFIC BASIS PER ASCE 7 ROOF OVER OPEN STRUCTURE WITH OBSTRUCTED WIND FLOW DESIGN CRITERIA PER THE CODES STATED HEREIN WIND LOADS SHOWN INCLUDE REDUCTION TO CONSIDER POROSITY OF STRUCTURE. NO FURTHER REDUCTIONS ARE TO BE TAKING FOR POROSITY CONSIDERATION.
  - DESIGN PROFESSIONAL SHALL CONSIDER ALL FORCES, INCLUDING SNOW LOADS PER GOVERNING BUILDING CODES.
  - DEFLECTION LIMIT FOR HOST-ATTACHED PERGOLA TAKEN AS L/60 FOR THESE CALCULATIONS.
  - THE ASCE 7-16 MINIMUM WIND PRESSURE LOADING OF 10 PSF HAS NOT BEEN APPLIED HEREIN. FOR INSTALLATIONS RATED TO LESS THAN 5 PSF, FABRC IS TO REMAIN RETRACTED AT ALL TIMES WHEN NOT IN USE. VERIFY ANY LIMITATION ACCEPTANCE WITH LOCAL BUILDING OFFICIAL.
  - IT SHALL BE THE USER'S RESPONSIBILITY TO FULLY RETRACT THE FABRIC IN THE EVENT OF A WIND STORM (FOR ALL INSTALLATION CONDITONS).
  - SCHEDULE 5: WIND SPEED & EXPOSURE TO WIND PRESSURE MAY BE USED DIRECTLY WITH THE INCLUDED DESIGN SCHEDULES, BUT ASSUMES NO ADDITIOAL LOADING IS APPLIED (INCLUDING ADDITIONAL DEAD, LIVE, SNOW, RAIN, OR SEISMIC LOADS). ADDITIONAL SITE-SPECIFIC DESIGN PRESSURE CALCALATIONS MAY BE REQUIRED PER THE AUTHORITY HAVING JURISDICTION.
  - FOR INSTALLATION CONDITIONS EXCEEDING THE ALLOWABLE PRESSURES LISTED HEREIN, ADDITIONAL ENGINEERING MAY BE REQUIRED.

CERTIFYING ENGINEER AND CERT OF AUTH AS LISTED ON STAMP

VALID FOR 1 PERMIT ONLY U.N.O.

**DIGITAL SEAL NOTICE:** IF THIS DOCUMENT IS DIGITALLY SIGNED, THIS SHEET IS PART OF A DIGITALLY SIGNED FILE. IT SHALL REMAIN IN DIGITAL FORMAT, SHALL BE VERIFIED BY ELECTRONIC MEANS, & PRINTED COPIES OF THIS DOCUMENT ARE NOT CONSIDERED SIGNED AND SEALED.

**PRINTED DOCUMENT NOTICE:** IF THIS DOCUMENT IS PRINTED & DOES NOT CONTAIN AN ENGINEER'S ORIGINAL SIGNATURE & SEAL, THIS DOCUMENT IS VOID & NOT VALID FOR USE. PHOTOCOPIES ARE NOT PERMITTED FOR USE.

CORPORATE OFFICE:

160 SW 12TH AVE, SUITE 106

DEERFIELD BEACH, FL 33442

(954) 354-0660 | (866) 396-9999

TEAM@ENGINEERINGEXPRESS.COM

ENGINEERINGEXPRESS.COM

KE USA INC

38 POND LN, STE B

MIDDLEBURY, VT

(802) 388-7309

KE DURASOL

GENIUS PERGOLA SYSTEMS

L1S MODEL MASTER PLAN

DATE	DRWN	CHKD	DATE	DATE	DATE	DATE	DATE	DATE	DATE
4/27/16	JCF	JCF	3/05/21						
2020	ISSUE	ISSUE	2020	ISSUE	ISSUE	ISSUE	ISSUE	ISSUE	ISSUE
2020	ISSUE	ISSUE	2020	ISSUE	ISSUE	ISSUE	ISSUE	ISSUE	ISSUE

20-35091

SCALE: NTS UNLESS NOTED

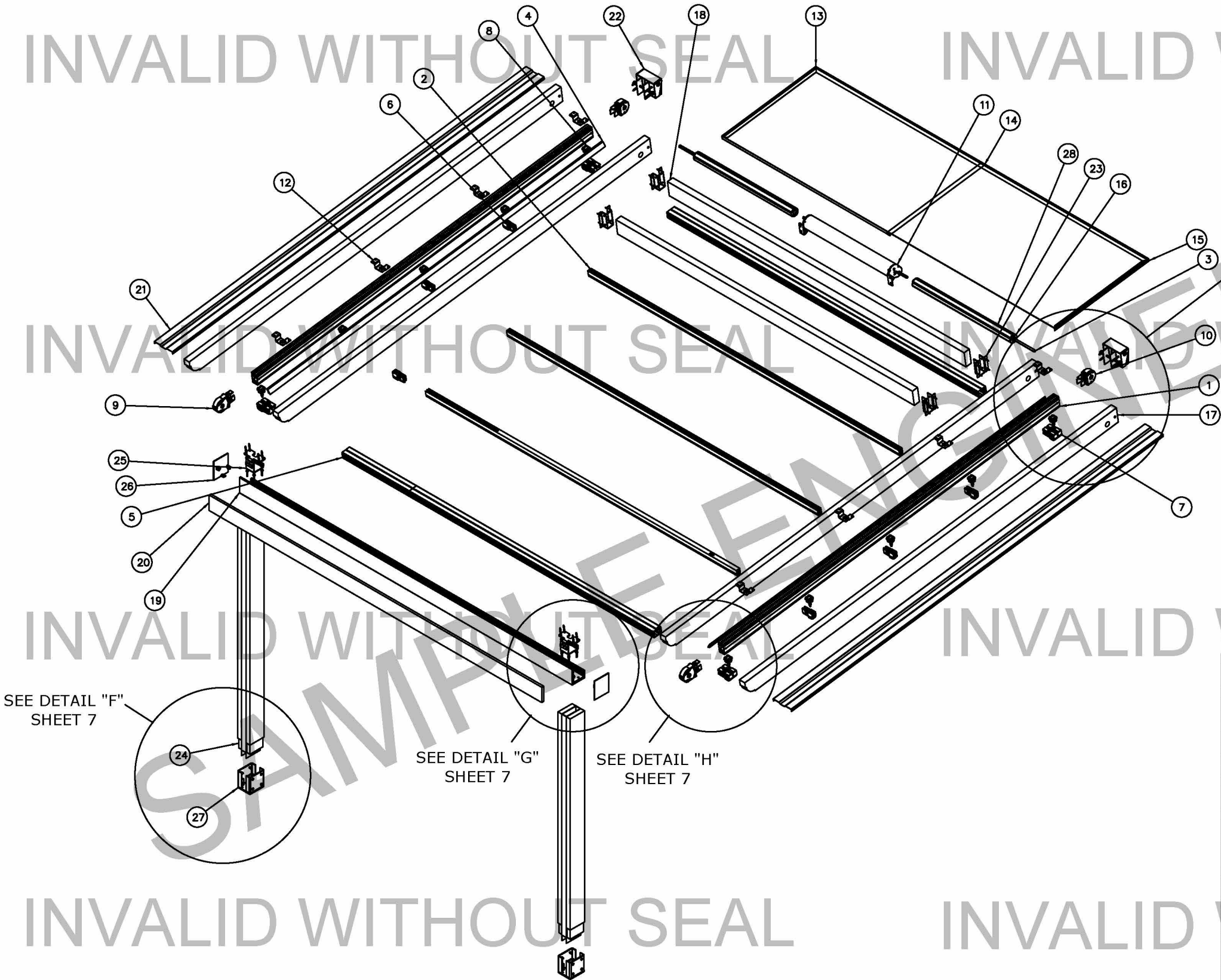
3



L1S CANOPY - PARTS LIST

COPIES NOT VALID FOR PERMIT

COPIES NOT VALID FOR PERMIT



28	CIRCULAR TUBE	820.00.70.01	2
27	BASE SUPPORT	745.80.00.00	2
26	END CAPS	745.45.00.00	1
25	TOP HINGE ASSEMBLY	745.40.00.00	2
24	COLUMN PROFILE	745.30.00.00	2
23	SUPPORT BRACKET FOR MOTOR BEAM	745.20.00.00	4
22	WALL BRACKET	745.10.00.00	2
21	PURLIN COVER	745.00.00.07	2
20	FLAT COVER	745.00.00.06	1
19	BEAM PROFILE	745.00.00.05	1
18	MOUNTING PROFILE	745.00.00.02	2
17	PURLIN	745.00.00.01	4
16	TRANSMISSION CAP	735.80.00.00	2
15	PANEL NATURALBOND	735.00.00.14.1	1
14	JOIN PROFILE	735.00.00.13	1
13	CORNER NATURALBOND	735.00.00.12	4
12	TERMINAL CAP ASSEMBLY	730.70.00.00	8
11	MOTOR KIT BOX	730.55.00.00	1
10	WHEEL TRANSMISSION COVER	730.45.00.00	2
9	WHEEL COVER	730.40.00.00	2
8	ROLLER ASSEMBLY	730.33.00.00	10
7	TERMINAL CAP ASSEMBLY	730.15.00.00	2
6	INTERMEDIATE CAP ASSEMBLY	730.10.00.00	3
5	TERMINAL PROFILE	730.00.00.14	2
4	EXTRUDED SEAL	730.00.00.09	2
3	TRANSMISSION AXLE	730.00.00.07	2
2	INTERMEDIATE PROFILE	730.00.00.03	3
1	GUIDE PROFILE	730.00.00.01	2
ITEM	PART NAME	PART NUMBER	QTY.

CERTIFYING ENGINEER AND CERT OF AUTH AS LISTED ON STAMP  
VALID FOR 1 PERMIT ONLY U.N.O.  
**DIGITAL SEAL NOTICE:**  
IF THIS DOCUMENT IS DIGITALLY SIGNED, THIS SHEET IS PART OF A DIGITALLY SIGNED FILE. IT SHALL REMAIN IN DIGITAL FORMAT, SHALL BE VERIFIED BY ELECTRONIC MEANS, & PRINTED COPIES OF THIS DOCUMENT ARE NOT CONSIDERED SIGNED AND SEALED.  
**PRINTED DOCUMENT NOTICE:**  
IF THIS DOCUMENT IS PRINTED & DOES NOT CONTAIN AN ENGINEER'S ORIGINAL SIGNATURE & SEAL, THIS DOCUMENT IS VOID & NOT VALID FOR USE. PHOTOCOPIES ARE NOT PERMITTED FOR USE.

**ENGINEERING EXPRESS®**

CORPORATE OFFICE:  
160 SW 12th AVE, SUITE 106  
DEERFIELD BEACH, FL 33442  
(954) 354-0660 | (866) 395-9999  
TEAM@ENGINEERINGEXPRESS.COM  
ENGINEERINGEXPRESS.COM

**KE USA INC**  
38 POND LN, STE B  
MIDDLEBURY, VT  
(802) 388-7309  
  
KE DURASOL  
GENIUS PERGOLA SYSTEMS  
L1S MODEL MASTER PLAN

REMARKS	DRWN	CHKD	DATE
INIT ISSUE	MCC	JCF	4/27/16
2020 REC	CCB	FLB	3/05/21

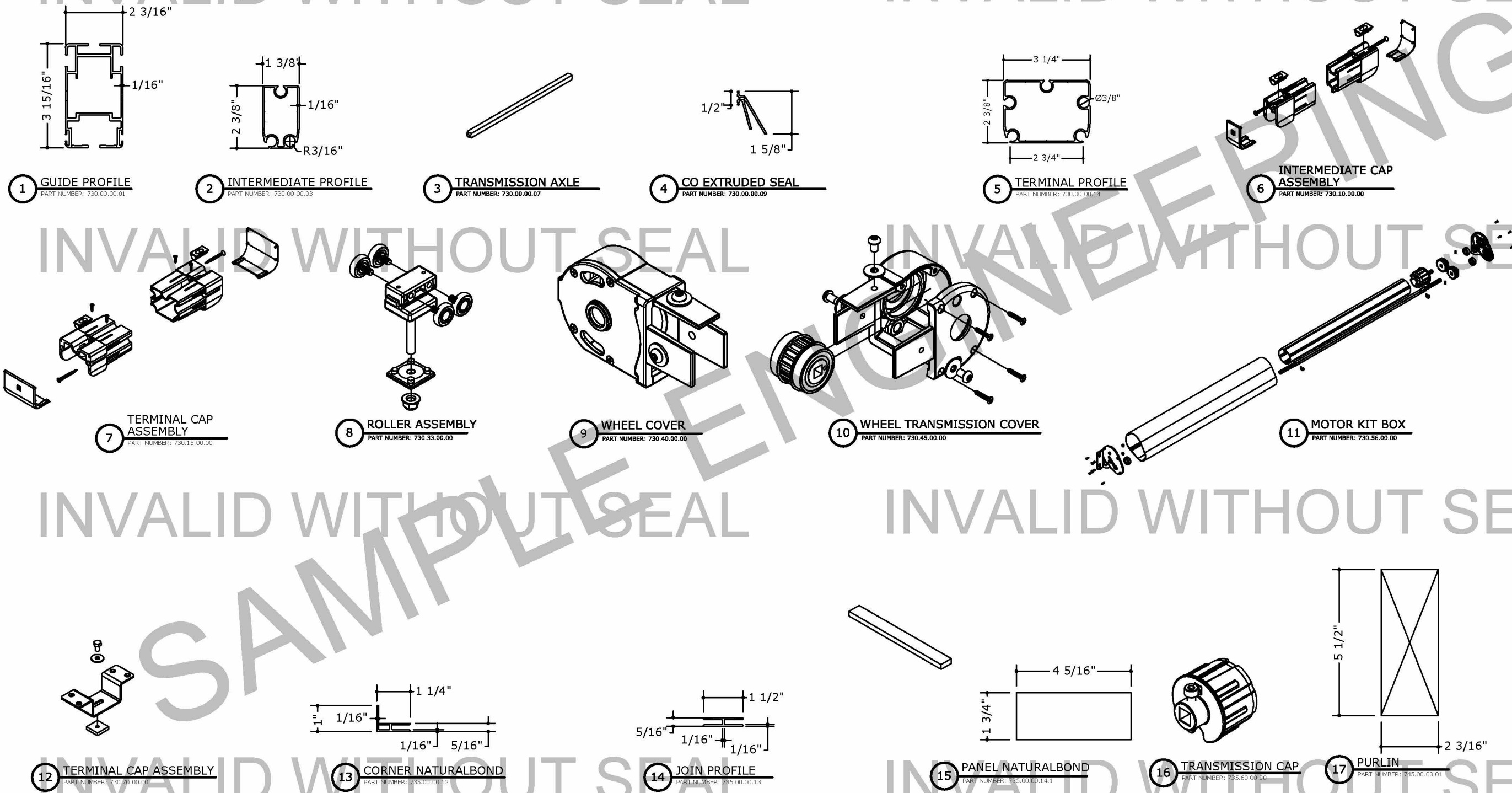
THIS DOCUMENT IS THE PROPERTY OF ENGINEERING EXPRESS, AND SHALL NOT BE REPRODUCED IN WHOLE OR PART WITHOUT WRITTEN CONSENT OF ENGINEERING EXPRESS. ALTERATIONS, ADDITIONS, OR OTHER MARKINGS TO THIS DOCUMENT ARE NOT PERMITTED AND INVALIDATE OUR CERTIFICATION.



L1S CANOPY - NON-STRUCTURAL COMPONENTS

FOR REFERENCE ONLY - NON-STRUCTURAL COMPONENTS ARE NOT PART OF CERTIFICATION

PARTS:



COPIES NOT VALID FOR PERMIT

COPIES NOT VALID FOR PERMIT

CERTIFYING ENGINEER AND CERT  
OF AUTH AS LISTED ON STAMP  
VALID FOR 1 PERMIT ONLY U.N.O.  
**DIGITAL SEAL NOTICE:**  
IF THIS DOCUMENT IS DIGITALLY  
SIGNED, THIS SHEET IS PART OF A  
DIGITALLY SIGNED FILE. IT SHALL  
REMAIN IN DIGITAL FORMAT, SHALL  
BE VERIFIED BY ELECTRONIC MEANS,  
& PRINTED COPIES OF THIS  
DOCUMENT ARE NOT CONSIDERED  
SIGNED AND SEALED.  
**PRINTED DOCUMENT NOTICE:**  
IF THIS DOCUMENT IS PRINTED &  
DOES NOT CONTAIN AN ENGINEER'S  
ORIGINAL SIGNATURE & SEAL, THIS  
DOCUMENT IS VOID & NOT VALID FOR  
USE. PHOTOCOPIES ARE NOT  
PERMITTED FOR USE.



**ENGINEERING  
EXPRESS®**

CORPORATE OFFICE:  
160 SW 12th AVE, SUITE 106  
DEERFIELD BEACH, FL 33442  
(954) 354-0660 | (866) 396-9999  
TEAM@ENGINEERINGEXPRESS.COM  
ENGINEERINGEXPRESS.COM

**KE USA INC**  
38 POND LN, STE B  
MIDDLEBURY, VT  
(802) 388-7309

**KE DURASOL**  
GENIUS PERGOLA SYSTEMS  
L1S MODEL MASTER PLAN

REMARKS	DRWN	CHKD	DATE
INIT ISSUE	MCC	JCF	4/27/16
2020 REC	CCB	FLB	3/05/21
THIS DOCUMENT IS THE PROPERTY OF ENGINEERING EXPRESS AND SHALL NOT BE REPRODUCED IN WHOLE OR PART WITHOUT WRITTEN CONSENT OF ENGINEERING EXPRESS. ALTERATIONS, ADDITIONS OR OTHER MARKINGS TO THIS DOCUMENT ARE NOT PERMITTED AND INVALIDATE OUR CERTIFICATION.			

COPYRIGHT ENGINEERING EXPRESS®

20-35091

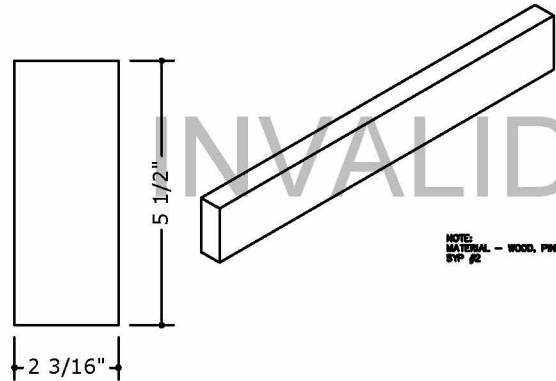
SCALE: NTS UNLESS NOTED

5

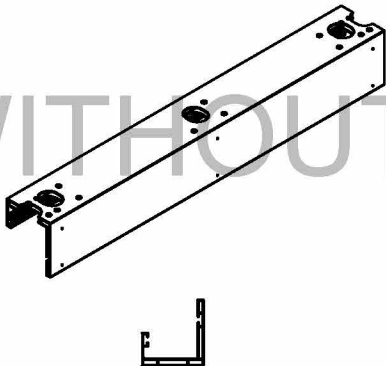


L1S CANOPY - COMPONENTS

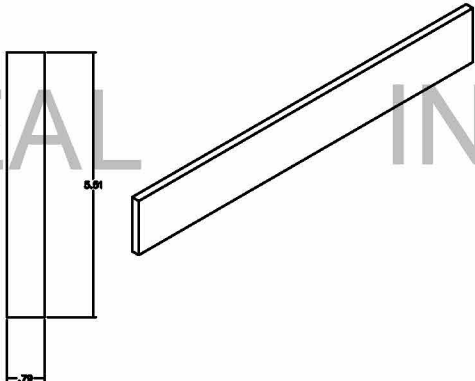
FOR REFERENCE ONLY - NON-STRUCTURAL COMPONENTS ARE NOT PART OF CERTIFICATION



18 MOUNTING PROFILE  
PART NUMBER: 745.00.00.02



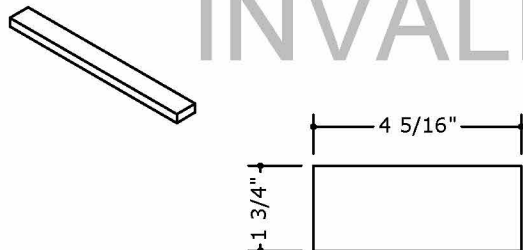
19 BEAM PROFILE  
PART NUMBER: 745.00.00.05



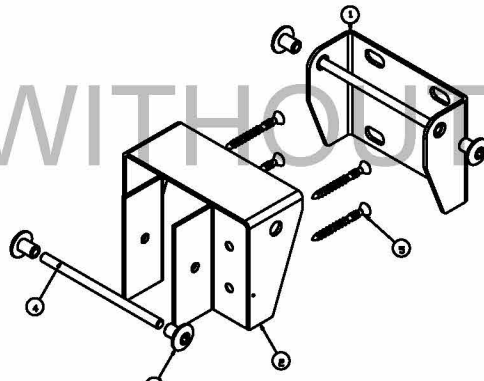
20 FLAT COVER  
PART NUMBER: 745.00.00.06



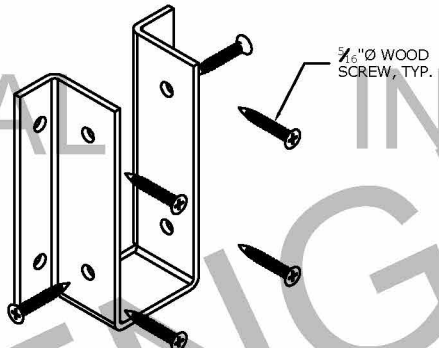
21 PURLIN COVER PROFILE  
PART NUMBER: 745.00.00.07



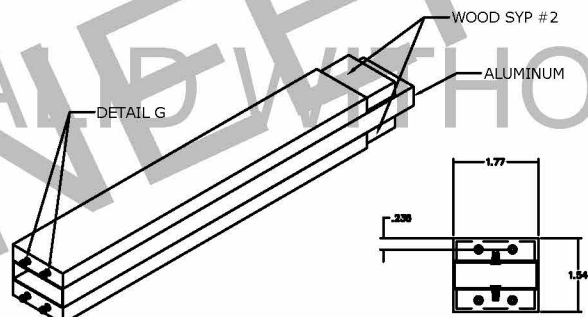
22 PANEL NATURALBOND  
PART NUMBER: 745.00.00.08



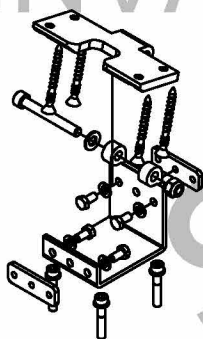
23 WALL BRACKET  
PART NUMBER: 745.10.00.00



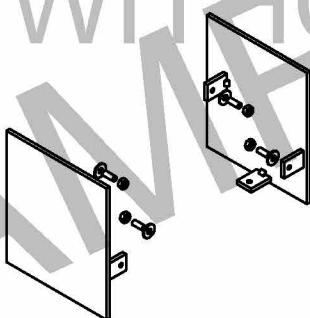
24 MOUNTING PROFILE BRACKET  
PART NUMBER: 745.20.00.00



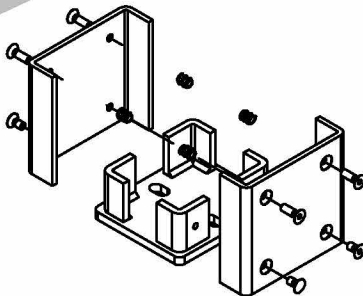
25 COLUMN PROFILE  
PART NUMBER: 745.30.00.00



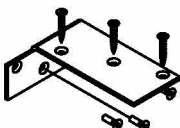
26 TOP HINGE ASSEMBLY  
PART NUMBER: 745.40.00.00



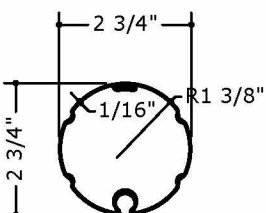
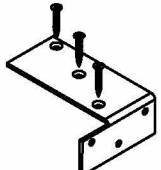
27 END CAPS  
PART NUMBER: 745.45.00.00



28 BASE SUPPORT  
PART NUMBER: 745.50.00.00



29 COLUMN BRACKET GABLE  
PART NUMBER: 745.60.00.00



30 CIRCULAR TUBE  
PART NUMBER: 620.00.70.01

COPIES NOT VALID FOR PERMIT

COPIES NOT VALID FOR PERMIT

CERTIFYING ENGINEER AND CERT OF AUTH AS LISTED ON STAMP  
VALID FOR 1 PERMIT ONLY U.N.O.  
DIGITAL SEAL NOTICE:  
IF THIS DOCUMENT IS DIGITALLY SIGNED, THIS SHEET IS PART OF A DIGITALLY SIGNED FILE. IT SHALL REMAIN IN DIGITAL FORMAT, SHALL BE VERIFIED BY ELECTRONIC MEANS, & PRINTED COPIES OF THIS DOCUMENT ARE NOT CONSIDERED SIGNED AND SEALED.  
PRINTED DOCUMENT NOTICE:  
IF THIS DOCUMENT IS PRINTED & DOES NOT CONTAIN AN ENGINEER'S ORIGINAL SIGNATURE & SEAL, THIS DOCUMENT IS VOID & NOT VALID FOR USE. PHOTOCOPIES ARE NOT PERMITTED FOR USE.

ENGINEERING EXPRESS®  
CORPORATE OFFICE:  
160 SW 12th AVE, SUITE 106  
DEERFIELD BEACH, FL 33442  
(954) 354-0660 | (866) 396-9999  
TEAM@ENGINEERINGEXPRESS.COM  
ENGINEERINGEXPRESS.COM

KE USA INC  
38 POND LN, STE B  
MIDDLEBURY, VT  
(802) 388-7309  
KE DURASOL  
GENIUS PERGOLA SYSTEMS  
L1S MODEL MASTER PLAN

REMARKS	DRWN	CHKD	DATE
INIT ISSUE	MCC	JCF	4/27/16
2020 REC	CCB	FLB	3/05/21
THIS DOCUMENT IS THE PROPERTY OF ENGINEERING EXPRESS, AND SHALL NOT BE REPRODUCED IN WHOLE OR PART WITHOUT WRITTEN CONSENT OF ENGINEERING EXPRESS. ALTERATIONS, ADDITIONS, OR OTHER MARKINGS TO THIS DOCUMENT ARE NOT PERMITTED AND INVALIDATE OUR CERTIFICATION.			

COPYRIGHT ENGINEERING EXPRESS®

20-35091

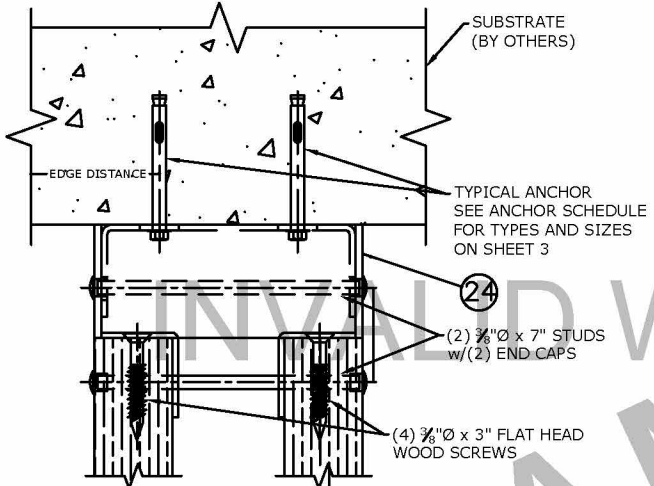
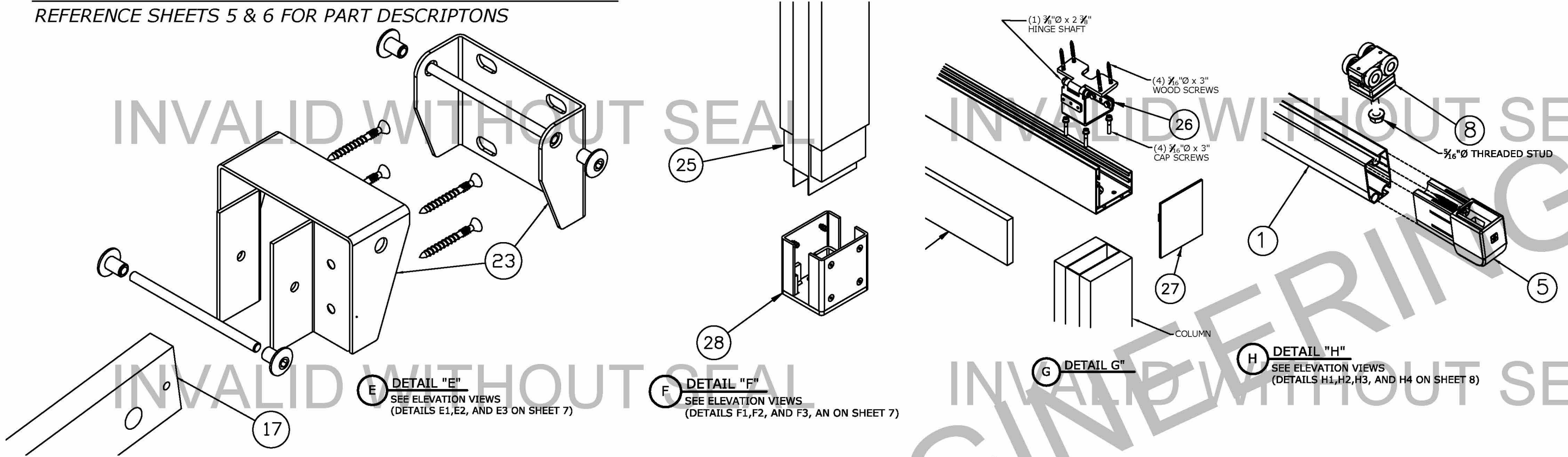
SCALE: NTS UNLESS NOTED

6 OF 6

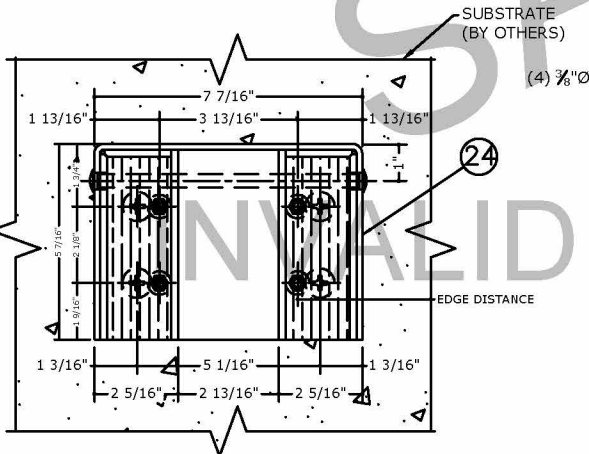


L1S CANOPY - CONNECTION DETAILS

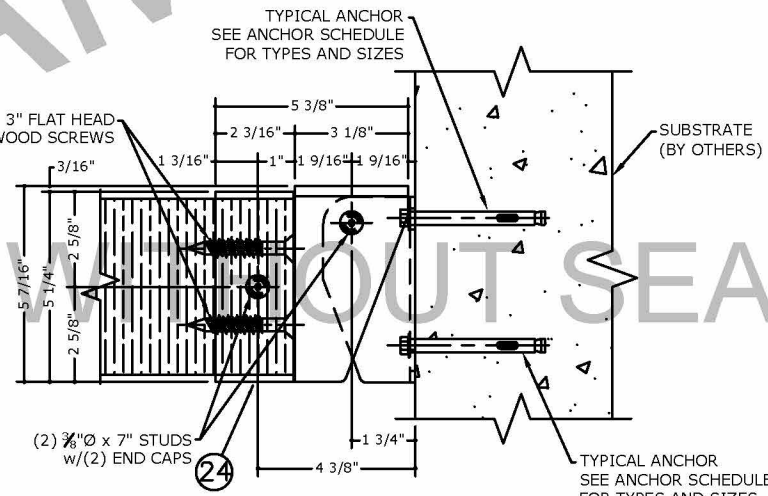
REFERENCE SHEETS 5 & 6 FOR PART DESRIPTONS



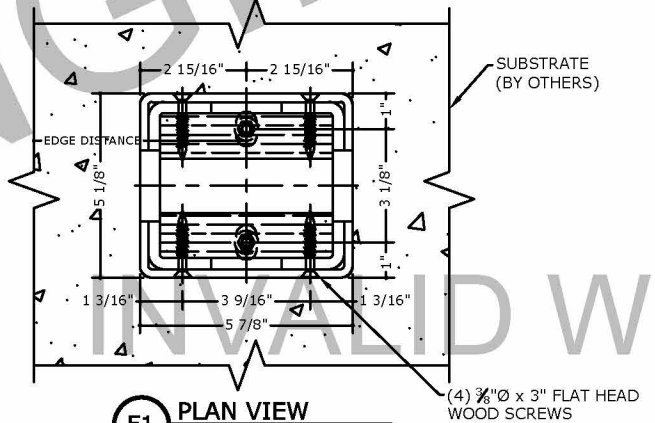
E1 TOP VIEW WALL AND PURLIN ATTACHMENT



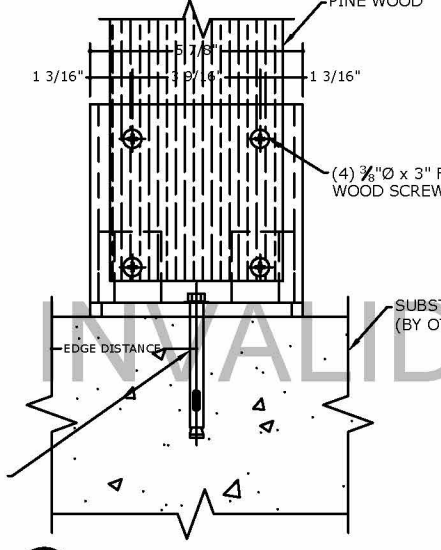
E2 FRONT ELEVATION VIEW WALL AND PURLIN ATTACHMENT



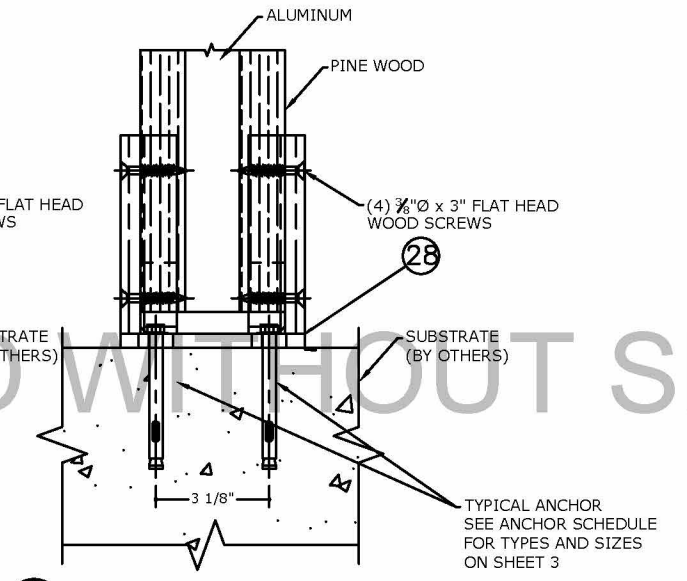
E3 SIDE ELEVATION VIEW WALL AND PURLIN ATTACHMENT



F1 PLAN VIEW BOTTOM ATTACHMENT



F2 SIDE ELEVATION VIEW BOTTOM ATTACHMENT



F3 FRONT ELEVATION VIEW BOTTOM ATTACHMENT

PE SEAL REQUIRED  
CERTIFYING ENGINEER AND CERT OF AUTH AS LISTED ON STAMP  
VALID FOR 1 PERMIT ONLY U.N.O.  
DIGITAL SEAL NOTICE:  
IF THIS DOCUMENT IS DIGITALLY SIGNED, THIS SHEET IS PART OF A DIGITALLY SIGNED FILE. IT SHALL REMAIN IN DIGITAL FORMAT, SHALL BE VERIFIED BY ELECTRONIC MEANS, & PRINTED COPIES OF THIS DOCUMENT ARE NOT CONSIDERED SIGNED AND SEALED.  
PRINTED DOCUMENT NOTICE:  
IF THIS DOCUMENT IS PRINTED & DOES NOT CONTAIN AN ENGINEER'S ORIGINAL SIGNATURE & SEAL, THIS DOCUMENT IS VOID & NOT VALID FOR USE. PHOTOCOPIES ARE NOT PERMITTED FOR USE.

ENGINEERING EXPRESS®  
CORPORATE OFFICE:  
160 SW 12th AVE, SUITE 106  
DEERFIELD BEACH, FL 33442  
(954) 354-0660 | (866) 396-9999  
TEAM@ENGINEERINGEXPRESS.COM  
ENGINEERINGEXPRESS.COM

KE USA INC  
38 POND LN, STE B  
MIDDLEBURY, VT  
(802) 388-7309  
KE DURASOL  
GENIUS PERGOLA SYSTEMS  
L1S MODEL MASTER PLAN

REMARKS	DRWN	CHKD	DATE
INIT ISSUE	MCC	JCF	4/27/16
2020 REC	CCB	FLB	3/05/21

THIS DOCUMENT IS THE PROPERTY OF ENGINEERING EXPRESS, AND SHALL NOT BE REPRODUCED IN WHOLE OR PART WITHOUT WRITTEN CONSENT OF ENGINEERING EXPRESS. ALTERATIONS, ADDITIONS OR OTHER MARKINGS TO THIS DOCUMENT ARE NOT PERMITTED AND INVALIDATE OUR CERTIFICATION.

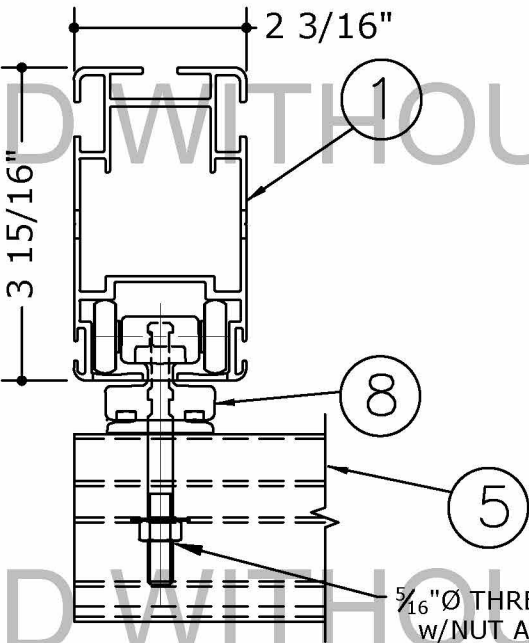


L1S CANOPY - ROLLER CONNECTION

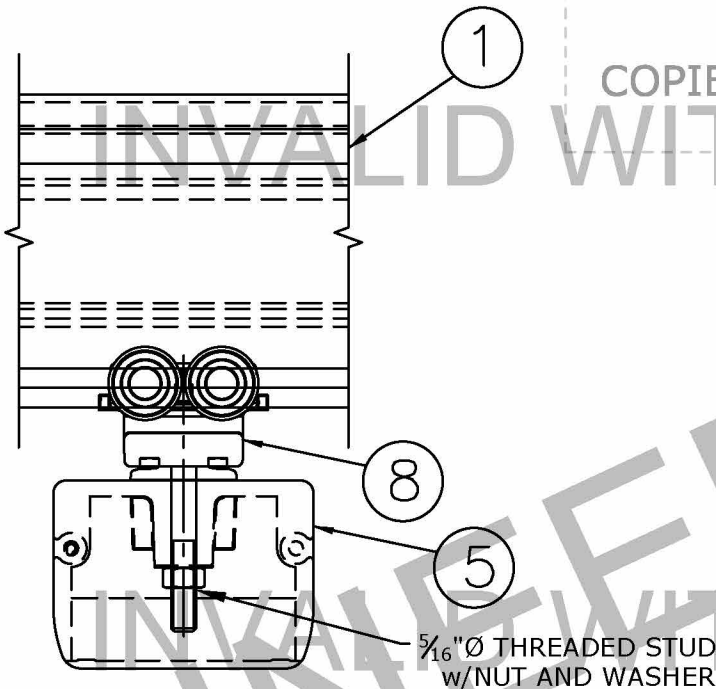
FOR REFERENCE ONLY - NON-STRUCTURAL COMPONENTS ARE NOT PART OF CERTIFICATION

COPIES NOT VALID FOR PERMIT

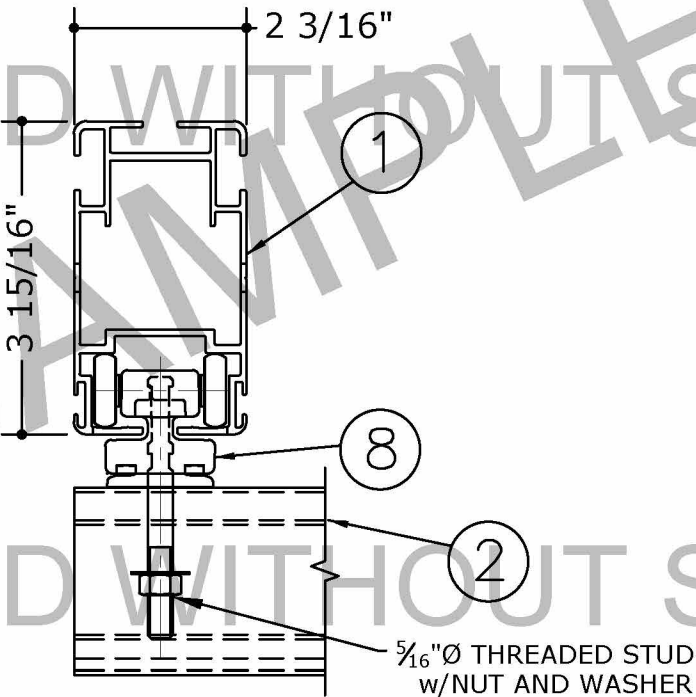
COPIES NOT VALID FOR PERMIT



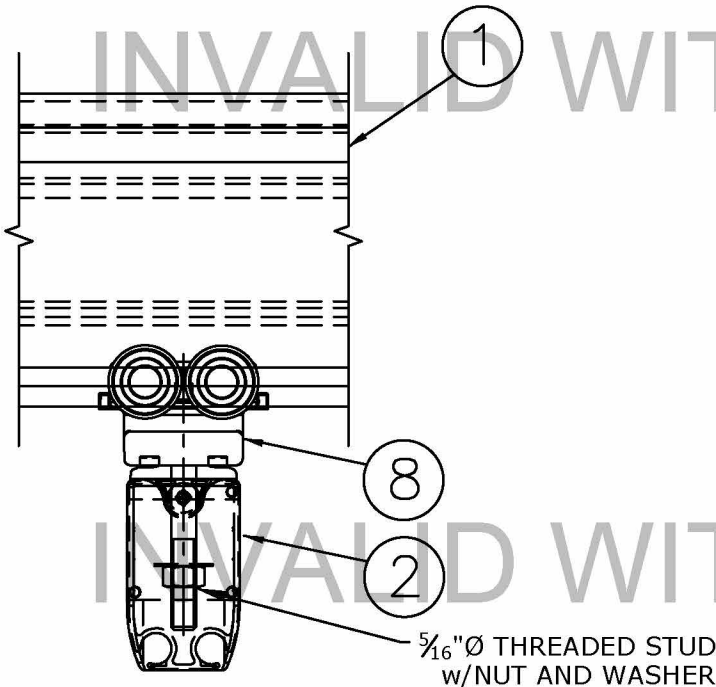
H1 ROLLER FRONT VIEW  
CONNECTION AT TERMINAL PROFILE



H2 ROLLER SIDE VIEW  
CONNECTION AT TERMINAL PROFILE



H3 ROLLER FRONT VIEW  
CONNECTION AT INTERMEDIATE PROFILE



H4 ROLLER SIDE VIEW  
CONNECTION AT INTERMEDIATE PROFILE

COPIES NOT VALID FOR PERMIT

CERTIFYING ENGINEER AND CERT  
OF AUTH AS LISTED ON STAMP  
VALID FOR 1 PERMIT ONLY U.N.O.  
**DIGITAL SEAL NOTICE:**  
IF THIS DOCUMENT IS DIGITALLY  
SIGNED, THIS SHEET IS PART OF A  
DIGITALLY SIGNED FILE. IT SHALL  
REMAIN IN DIGITAL FORMAT, SHALL  
BE VERIFIED BY ELECTRONIC MEANS,  
& PRINTED COPIES OF THIS  
DOCUMENT ARE NOT CONSIDERED  
SIGNED AND SEALED.  
**PRINTED DOCUMENT NOTICE:**  
IF THIS DOCUMENT IS PRINTED &  
DOES NOT CONTAIN AN ENGINEER'S  
ORIGINAL SIGNATURE & SEAL, THIS  
DOCUMENT IS VOID & NOT VALID FOR  
USE. PHOTOCOPIES ARE NOT  
PERMITTED FOR USE.

**ENGINEERING**  
**EXPRESS**

CORPORATE OFFICE:  
160 SW 12th AVE, SUITE 106  
DEERFIELD BEACH, FL 33442  
(954) 354-0660 | (866) 396-9999  
TEAM@ENGINEERINGEXPRESS.COM  
ENGINEERINGEXPRESS.COM

**KE USA INC**  
38 POND LN, STE B  
MIDDLEBURY, VT  
(802) 388-7309

**KE DURASOL**  
GENIUS PERGOLA SYSTEMS  
L1S MODEL MASTER PLAN

REMARKS	DRWN	CHKD	DATE
INIT ISSUE	MCC	JCF	4/27/16
2020 REC	CCB	FLB	3/05/21

THIS DOCUMENT IS THE PROPERTY OF ENGINEERING EXPRESS  
AND SHALL NOT BE REPRODUCED IN WHOLE OR PART WITHOUT  
WRITTEN CONSENT OF ENGINEERING EXPRESS. ALTERATIONS,  
ADDITIONS, OR OTHER MARKINGS TO THIS DOCUMENT ARE NOT  
PERMITTED AND INVALIDATE OUR CERTIFICATION.

COPYRIGHT ENGINEERING EXPRESS

20-35091

SCALE: NTS UNLESS NOTED

8