

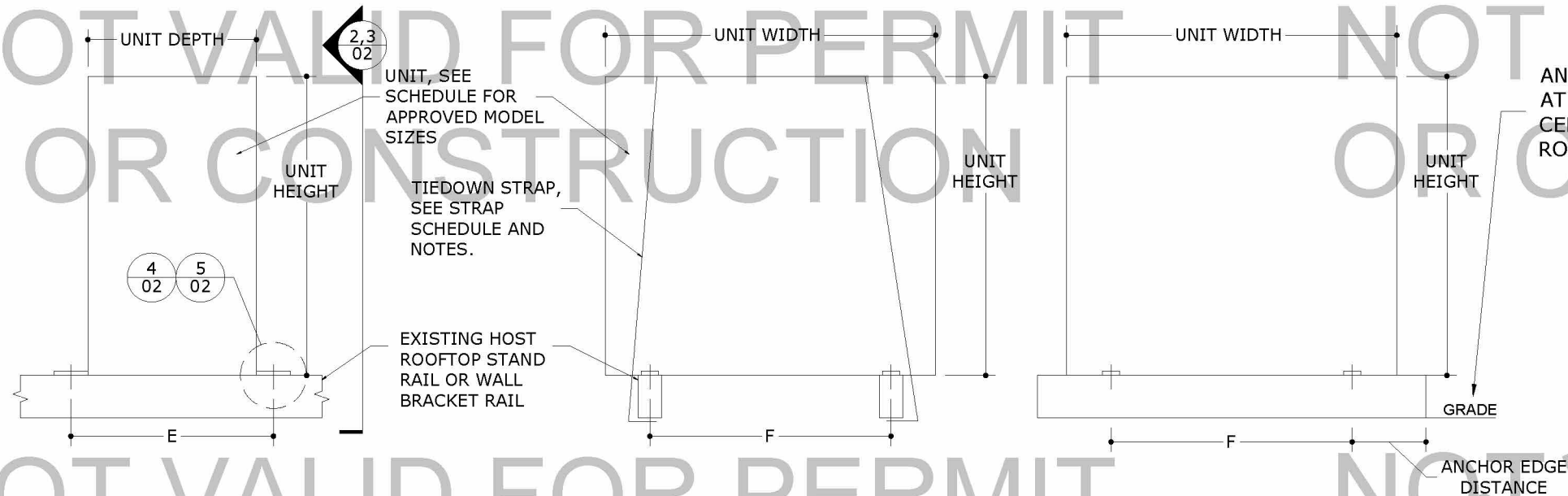
2

c:\users\rickn\engineering\express\production - documents\projects\22-122-57202 florida hurricane tie down requirements\work\drawings & cad\mps-22-57202c florida hurricane tie down.dwg
RICKN 1/5/2023 8:31 AM

Richard Neet, P.E.
PE# 86488 CA# 9885

JANUARY 5, 2023

STATE



ANCHORAGE TO CONCRETE SLAB
AT GRADE ONLY. ADDITIONAL
CERTIFICATION REQUIRED FOR
ROOFTOP CONCRETE ATTACHMENT

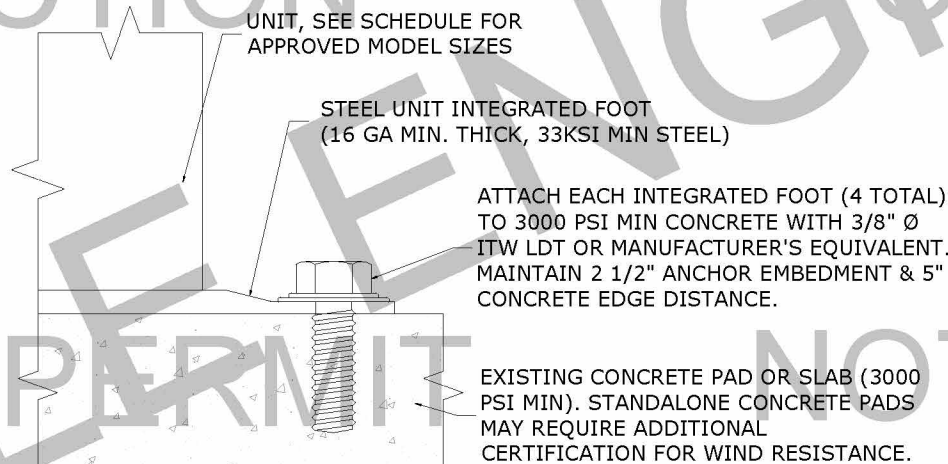
ORIGINAL SIGNED & SEALED
PLANS REQUIRED FOR PERMIT.
PHOTOCOPIES NOT TO BE USED
FOR PERMIT OR CONSTRUCTION.

DIGITAL SEAL NOTICE:
IF THIS DOCUMENT IS DIGITALLY SIGNED,
THIS SHEET IS PART OF A DIGITALLY SIGNED
FILE. IT SHALL REMAIN IN DIGITAL FORMAT,
SHALL BE VERIFIED BY ELECTRONIC MEANS, &
PRINTED COPIES OF THIS DOCUMENT ARE NOT
CONSIDERED SIGNED AND SEALED.
PRINTED DOCUMENT NOTICE:
IF THIS DOCUMENT IS PRINTED & DOES
NOT CONTAIN AN ENGINEER'S ORIGINAL
SIGNATURE & SEAL, THIS DOCUMENT IS VOID
& NOT VALID FOR USE. PHOTOCOPIES ARE
NOT PERMITTED FOR USE.
VALID FOR 1 PERMIT ONLY U.N.O.

1 UNIT TIE-DOWN TO RAIL,
BRACKET, OR CONCRETE
02 SCALE: NTS SIDE ELEV

2 UNIT TIE-DOWN TO
RAIL OR WALL BRACKET
02 SCALE: NTS FRONT ELEV

3 UNIT TIE-DOWN
TO CONCRETE
02 SCALE: NTS FRONT ELEV



TIEDOWN STRAP SCHEDULE

Model Number	Unit Dimensions (in)			# Of Tie-Down Straps Required
	Width	Depth	Height	
E4HL5018A1000A	35.59	13.69	31.61	2
E4HL5024A1000A				
E4HL5030A1000A				
E4HL5036A1000A	37.16	13.31	52.72	4
E4HL5042A1000A				
E4HL5048A1000A				
E4HL5060A1000A				

* STRAPS NOT REQUIRED FOR AT-GRADE INSTALLATIONS TO
CONCRETE SLAB.

4 UNIT TIEDOWN
TO RAIL OR WALL BRACKET
02 SCALE: NTS SECTION

5 UNIT TIEDOWN
CONCRETE PAD OR SLAB
02 SCALE: NTS SECTION

UNIT MODEL SCHEDULE NOTES

- TIE-DOWN STRAP NOTE:**
TIE-DOWN STRAPS SHALL BE 1" WIDE X 22 GA MIN. THICK,
YS = 33 KSI MIN. (EQUIV. TO ASTM A653 GR. 33 OR STRONGER)
GALV STEEL. STRAPS SHALL BE EQUALLY SPACED OVER UNIT
AND SHALL ATTACH TO EXISTING HOST STAND OR BRACKET
RAIL W/ (2) #14 SAE GR 2 MIN. OR SS SMS PER SIDE, TYP.
TIE-DOWN STRAPS SHALL NOT BE REQUIRED FOR CONCRETE
CONNECTIONS AT GRADE AS DETAILED HEREIN.
- MODEL INFORMATION LISTED HEREIN IS BASED ON
INFORMATION PROVIDED BY THE CLIENT. UNIT APPEARANCE
MAY VARY.

- UNIT FEET ANCHORING DIMENSIONS "E" AND "F" AS SHOWN
HEREIN ARE PER THE UNIT MANUFACTURER'S PUBLISHED
DOCUMENTATION. CONTACT COOPER & HUNTER FOR MORE
INFORMATION ON UNIT CONSTRUCTION.
- WIDTH, DEPTH, AND HEIGHT DIMENSIONS LISTED ARE NET
DIMENSIONS. SEE DETAILS HEREIN. ALL UNIT NET WEIGHTS
SHALL BE BETWEEN 50 lb AND 275 lb, TYP.
- CONTACT ENGINEERING EXPRESS FOR CERTIFICATION OF UNIT
MODELS NOT LISTED HEREIN.

ENGINEERING
EXPRESS®
POSTAL ADDRESS:
401 W. ATLANTIC AVE R10 BOX 219
DELRAY BEACH, FL 33444
ENGINEERINGEXPRESS.COM
Trane U.S.
6200 Troup Highway Tyler, TX
75707 USA
AC Unit Housing and Mounting
Certification - Florida Building Code
Seventh Edition (2020)

REMARKS	DRWN	CHKD	DATE
INIT ISSUE	MRT	RWN	12/02/22
GENERAL INFO. UPDATE	MRT	RWN	12/14/22

THIS DOCUMENT IS THE PROPERTY OF ENGINEERING EXPRESS,
AND SHALL NOT BE REPRODUCED IN WHOLE OR PART WITHOUT
WRITTEN CONSENT OF ENGINEERING EXPRESS. ALTERATIONS,
ADDITIONS, OR OTHER MARKINGS TO THIS DOCUMENT ARE NOT
PERMITTED AND INVALIDATE OUR CERTIFICATION.

COPYRIGHT ENGINEERING EXPRESS®
22-57202
SCALE: NTS UNLESS NOTED
02 OF 2