

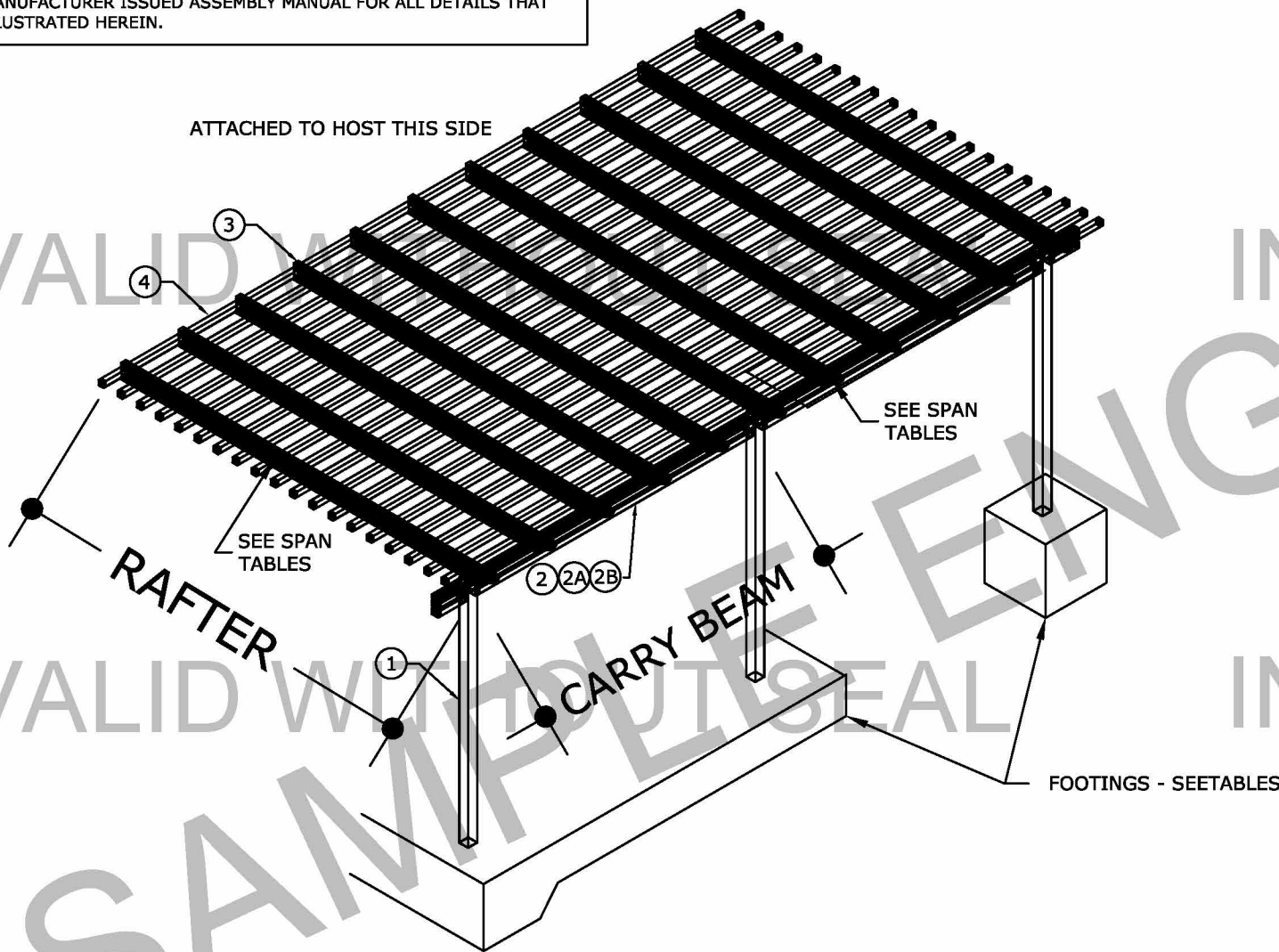
NATUREWOOD LATTICE

ALUMINUM LATTICE OPEN PERGOLA SYSTEM MASTER PLAN SHEET (HOST ATTACHED)

SYSTEM NOTES:

LATTICE SHALL BE INSTALLED PER MANUFACTURER'S SPECIFICATION FABRICATED BY ELITE ALUMINUM, INC.

1. REFER TO MANUFACTURER ISSUED ASSEMBLY MANUAL FOR ALL DETAILS THAT ARE NOT ILLUSTRATED HEREIN.



1 HOST ATTACHED LATTICE
1 SCALE: N.T.S ISO VIEW

VISIT [ECALC.IO/2025067](https://ecalcalc.io/2025067)

FOR ENGINEER-CERTIFIED ORIGINALS, SITE
SPECIFIC ORDERING & OTHER RESOURCES

VISIT [ENGINEERINGEXPRESS.COM/ELITE](https://engineeringexpress.com/elite)
FOR MORE MANUFACTURER PLANS

**THIS DOCUMENT IS ONLY VALID WITH
ORIGINAL ENGINEER CERTIFICATION**



ecalcalc.io/2025067

COPIES OF THIS PLAN ARE NOT PERMITTED FOR PERMIT

DESIGN NOTES:

POSITIVE AND NEGATIVE DESIGN PRESSURES CALCULATED FOR USE WITH THIS SYSTEM SHALL BE DETERMINED BY OTHERS ON A JOB-SPECIFIC BASIS IN ACCORDANCE WITH THE STRUCTURAL REQUIREMENTS OF THE FLORIDA BUILDING CODE SEVENTH EDITION (2020), 2012/2015/2018 INTERNATIONAL BUILDING CODES, AS WELL AS CURRENT VERSIONS OF THE MN, NC, NJ, NY, OH, SC, & VA BUILDING CODES AS APPLICABLE. CODE ENFORCED COMPLIES WITH STATE OF SEAL AND IF MULTIPLE VERSIONS LISTED THEN MOST STRINGENT APPLIES.
THE SYSTEM HAS **NOT BEEN DESIGNED** TO WITHSTAND CONCENTRATED LOADS FROM HUMAN ACTIVITY.

GENERAL NOTES:

GENERAL:

1. THIS DOCUMENT SHALL NOT BE USED OR REPRODUCED WITHOUT THE ORIGINAL SIGNATURE & RAISED SEAL OF AN ENGINEER FROM ENGINEERING EXPRESS. ALTERATIONS, ADDITIONS OR OTHER MARKINGS TO THIS DOCUMENT ARE NOT PERMITTED AND INVALIDATE OUR CERTIFICATION. PHOTOCOPIES & UNSEALED DOCUMENTS ARE NOT TO BE ACCEPTED.
2. CONTRACTOR SHALL INVESTIGATE AND CONFORM TO ALL LOCAL BUILDING CODE AMENDMENTS WHICH MAY APPLY AND GOVERN. DESIGN CRITERIA OR SPANS BEYOND STATED HEREIN MAY REQUIRE ADDITIONAL SITE SPECIFIC SEALED ENGINEERING.
3. STRUCTURE SHALL NOT BE ENCLOSED UNLESS ADDITIONAL ENGINEERING IS PROVIDED AND APPROVAL BY THE LOCAL BUILDING AUTHORITY.
4. THE ARCHITECT/ENGINEER OF RECORD FOR THE PROJECT HOST STRUCTURE WHICH THIS DESIGN IS USED SHALL BE RESPONSIBLE FOR THE INTEGRITY OF ALL SUPPORTING SURFACES TO THIS DESIGN WHICH SHALL BE COORDINATED BY THE PERMITTING CONTRACTOR.
5. THE SYSTEM DETAILED HEREIN IS GENERIC AND DOES NOT PROVIDE INFORMATION FOR A SPECIFIC SITE. FOR SITE CONDITIONS DIFFERENT FROM THE CONDITIONS DETAILED HEREIN, A LICENSED ENGINEER OR REGISTERED ARCHITECT SHALL PREPARE SITE SPECIFIC DOCUMENTS FOR USE IN CONJUNCTION WITH THIS DOCUMENT.
6. THE CONTRACTOR SHALL CAREFULLY CONSIDER POSSIBLE IMPOSING LOADS ON ROOF, INCLUDING BUT NOT LIMITED TO ANY CONCENTRATED LOADS WHICH MAY JUSTIFY GREATER DESIGN CRITERIA. THIS ADDITIONAL ROOF LOAD CRITERIA SHALL BE PROPERLY ANALYZED BY A LICENSED ENGINEER OR REGISTERED ARCHITECT.

FASTENERS:

7. ALL FASTENERS TO BE #12 SAE GRADE 2 OR STAINLESS STEEL 304 UNLESS NOTED OTHERWISE. FASTENERS SHALL BE CADMIUM-PLATED OR OTHERWISE CORROSION-RESISTANT MATERIAL AND SHALL COMPLY WITH "SPECIFICATIONS FOR ALUMINUM STRUCTURES" BY THE ALUMINUM ASSOCIATION, INC., & ANY APPLICABLE FEDERAL, STATE, AND/OR LOCAL CODES.
8. FOR ALUMINUM MEMBERS ALL ANCHORS SHALL BE SPACED WITH 2xDIAMETER END DISTANCE AND 2.5xDIAMETER MIN. SPACING TO ADJACENT ANCHORS, UNLESS NOTED OTHERWISE.
9. ANCHORS SHALL BE INSTALLED IN ACCORDANCE WITH MANUFACTURERS' RECOMMENDATIONS. MINIMUM EMBEDMENT SHALL BE AS NOTED HEREIN. MINIMUM EMBEDMENT AND EDGE DISTANCE EXCLUDES STUCCO, FOAM, BRICK, AND OTHER WALL FINISHES.
10. ALL CONCRETE ANCHORS SHALL BE INSTALLED TO NON-CRACKED CONCRETE ONLY.

MATERIALS

11. WOOD HOST STRUCTURE & ALL WOOD MEMBERS SHALL BE "SOUTHERN YELLOW PINE" G=0.55 OR GREATER DENSITY.
12. THE CONTRACTOR IS RESPONSIBLE TO INSULATE ALL MEMBERS FROM DISSIMILAR MATERIALS TO PREVENT ELECTROLYSIS.
13. ALL ALUMINUM SHALL BE 6063-T6 ALLOY AND TEMPER UNLESS NOTED OTHERWISE.
14. STEEL SHALL BE ASTM A1011 OR A653 GRADE 50 (Fy=50 KSI, Fu=65 KSI) OR BETTER.
15. ALL CONCRETE AND EPOXY TO REACH A MINIMUM COMPRESSIVE STRENGTH OF 3000 PSI IN 7 DAYS.

OTHER

16. ENGINEER SEAL AFFIXED HERETO VALIDATES STRUCTURAL DESIGN AS SHOWN ONLY. USE OF THIS SPECIFICATION BY CONTRACTOR, et. al. INDEMNIFIES & SAVES HARMLESS THIS ENGINEER FOR ALL COST & DAMAGES INCLUDING LEGAL FEES & APPELATE FEES RESULTING FROM MATERIAL FABRICATION, SYSTEM ERECTION, & CONSTRUCTION PRACTICES BEYOND THAT WHICH IS CALLED FOR BY LOCAL, STATE, & FEDERAL CODES & FROM DEVIATIONS OF THIS PLAN.
17. EXCEPT AS EXPRESSLY PROVIDED HEREIN, NO ADDITIONAL CERTIFICATIONS OR AFFIRMATIONS ARE INTENDED.

02/04/2021

CERTIFYING ENGINEER IS THE NAME LISTED ON THE SEAL

VALID FOR 1 PERMIT ONLY U.N.O.

DIGITAL SEAL NOTICE:
IF THIS DOCUMENT IS DIGITALLY SIGNED, THIS SHEET IS PART OF A DIGITALLY SIGNED FILE. IT SHALL REMAIN IN DIGITAL FORMAT, SHALL BE VERIFIED BY ELECTRONIC MEANS, & PRINTED COPIES OF THIS DOCUMENT ARE NOT CONSIDERED SIGNED AND SEALED.
PRINTED DOCUMENT NOTICE:
IF THIS DOCUMENT IS PRINTED & DOES NOT CONTAIN AN ENGINEER'S ORIGINAL SIGNATURE & SEAL, THIS DOCUMENT IS VOID & NOT VALID FOR USE. PHOTOCOPIES ARE NOT PERMITTED FOR USE.

ENGINEERING EXPRESS®
CORPORATE OFFICE:
160 SW 12th AVE, SUITE 106
DEERFIELD BEACH, FL 33442
P: (954) 354-0660 F: (954) 354-0443
OFFICE@ENGINEERINGEXPRESS.COM
ENGINEERINGEXPRESS.COM

ELITE ALUMINUM, INC.
4650 LYONS TECHNOLOGY PKWY
COCONUT CREEK, FL
(954) 949-3200
NATUREWOOD LATTICE
MASTER PLAN SHEET

| REMARKS | DATE | DRWN | CHKD |
|-----------------|----------|------|------|
| INIT ISSUE | 08/07/19 | LAO | TSB |
| UPDATE | 09/19/19 | ADB | FLB |
| REINF. 2018 IBC | 05/03/20 | FB | FB |

THIS DOCUMENT IS THE PROPERTY OF ENGINEERING EXPRESS, AND SHALL NOT BE REPRODUCED IN WHOLE OR PART WITHOUT WRITTEN CONSENT OF ENGINEERING EXPRESS. ALTERATIONS, ADDITIONS, OR OTHER MARKINGS TO THIS DOCUMENT ARE NOT PERMITTED AND INVALIDATE OUR CERTIFICATION.

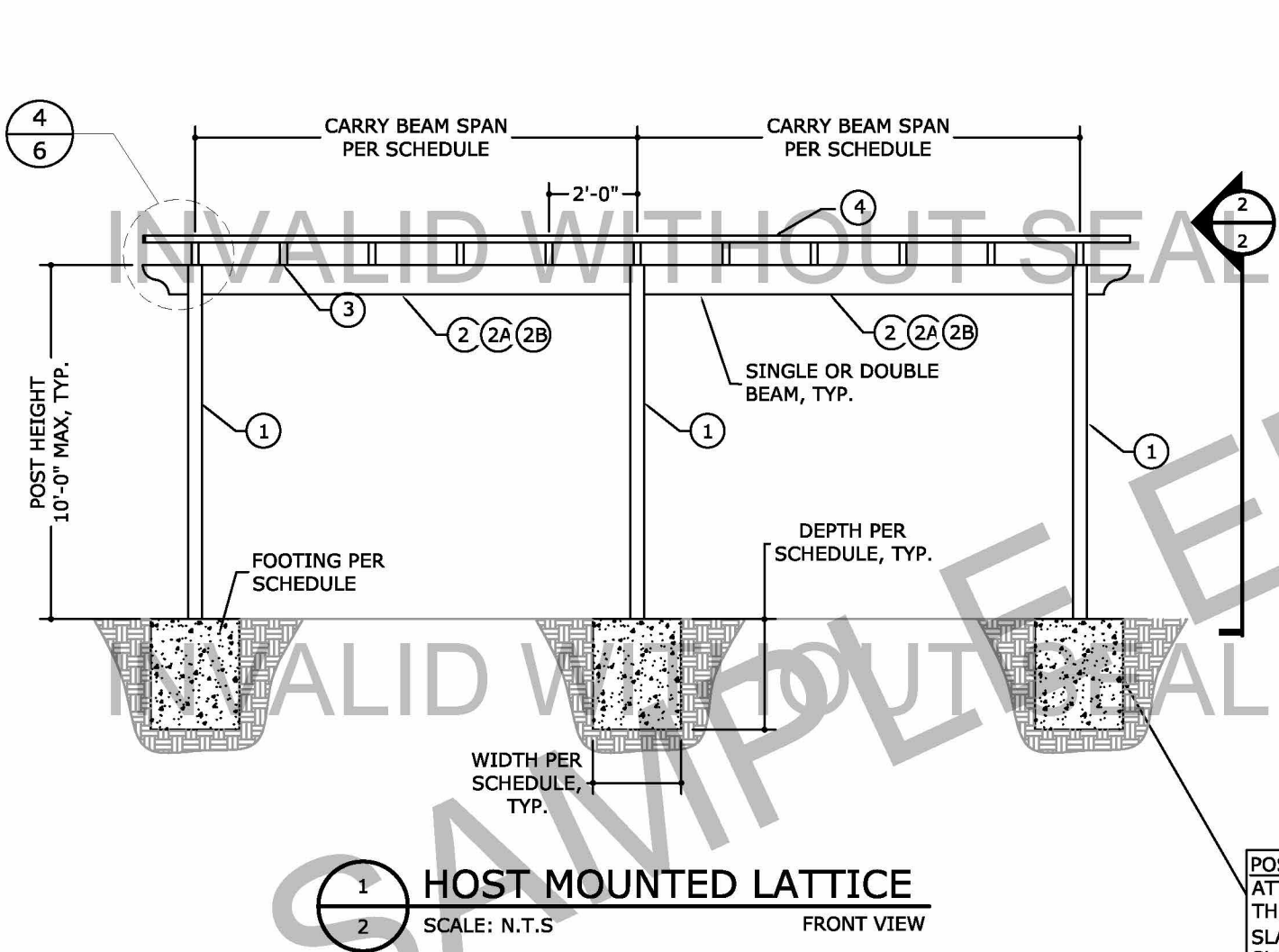
COPYRIGHT ENGINEERING EXPRESS®

20-25067

SCALE: NTS UNLESS NOTED

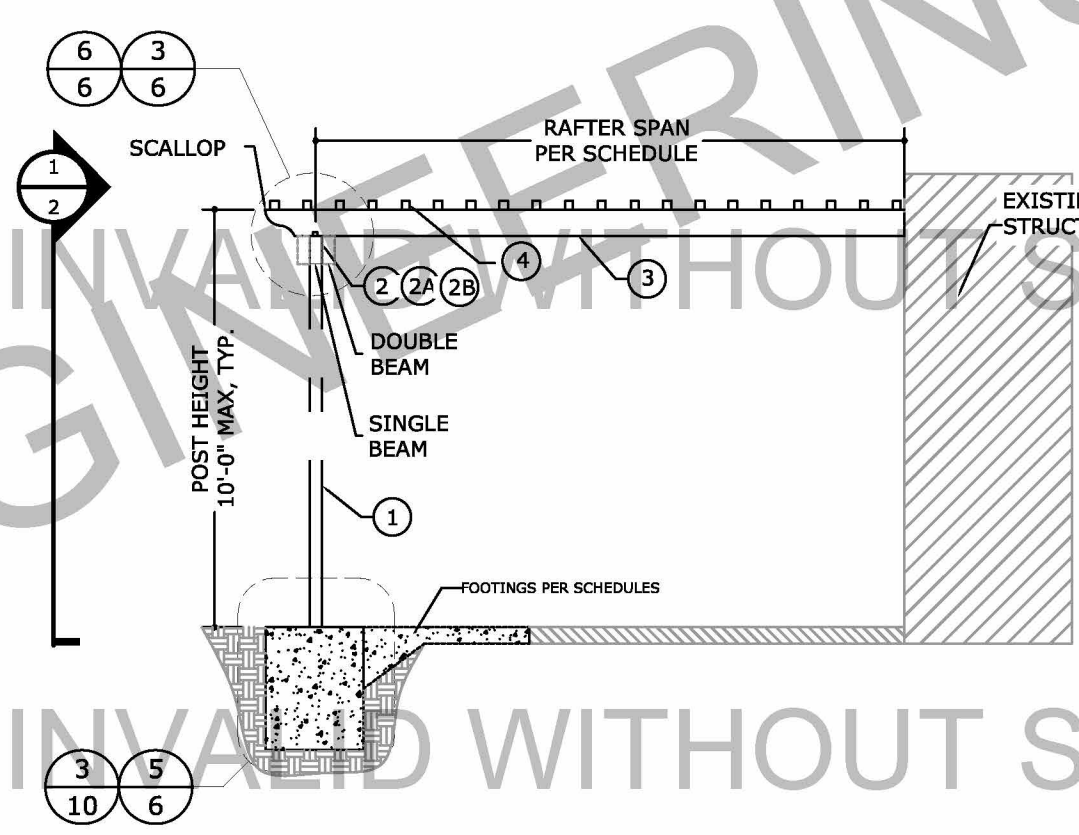
1 OF 6

ELEVATION VIEWS



1
2
HOST MOUNTED LATTICE
SCALE: N.T.S.
FRONT VIEW

POST TO SLAB NOTE: POSTS MAY BE ATTACHED CONCRETE SLAB WITHOUT THE USE OF FOOTERS SO LONG AS THE SLAB THICKNESS IS A MINIMUM OF 5½". SLAB SHALL BE CONTINUOUS AND SHALL COVER THE ENTIRE AREA UNDERNEATH THE CANOPY AND SHALL BE REINFORCED PER THE MINIMUM CODE REQUIREMENTS (BY OTHERS)



2
2
HOST MOUNTED LATTICE
SCALE: N.T.S.
SIDE VIEW

FOR ALTERNATE FOOTING SIZES

SCAN THIS QR CODE OR VISIT THIS LINK TO ORDER ENGINEER-CERTIFIED, SIGNED AND SEALED CALCULATIONS FOR ALTERNATE FOOTINGS. SUBMIT WITH THIS DOCUMENT FOR PERMITTING.

THIS DOCUMENT IS ONLY VALID WITH ORIGINAL ENGINEER CERTIFICATION



02/04/2021

02/04/2021

VALID FOR 1 PERMIT ONLY U.N.O.

DIGITAL SEAL NOTICE:
IF THIS DOCUMENT IS DIGITALLY SIGNED, THIS SHEET IS PART OF A DIGITALLY SIGNED FILE. IT SHALL REMAIN IN DIGITAL FORMAT, SHALL BE VERIFIED BY ELECTRONIC MEANS, & PRINTED COPIES OF THIS DOCUMENT ARE NOT CONSIDERED SIGNED AND SEALED.

PRINTED DOCUMENT NOTICE:
IF THIS DOCUMENT IS PRINTED & DOES NOT CONTAIN AN ENGINEER'S ORIGINAL SIGNATURE & SEAL, THIS DOCUMENT IS VOID & NOT VALID FOR USE. PHOTOCOPIES ARE NOT PERMITTED FOR USE.

ENGINEERING EXPRESS®
CORPORATE OFFICE:
160 SW 12th AVE, SUITE 106
DEERFIELD BEACH, FL 33442
P: (954) 354-0660 F: (954) 354-0443
OFFICE@ENGINEERINGEXPRESS.COM
ENGINEERINGEXPRESS.COM

ELITE ALUMINUM, INC.
4650 LYONS TECHNOLOGY PKWY
COCONUT CREEK, FL
(954) 949-3200

NATUREWOOD LATTICE
MASTER PLAN SHEET

| REMARKS | DRWN | CHKD | DATE |
|------------|------|------|----------|
| INIT ISSUE | LAO | TSB | 08/07/19 |
| UPDATE | ADB | FLB | 09/19/19 |

THIS DOCUMENT IS THE PROPERTY OF ENGINEERING EXPRESS, AND SHALL NOT BE REPRODUCED IN WHOLE OR PART WITHOUT WRITTEN CONSENT OF ENGINEERING EXPRESS. ALTERATIONS, ADDITIONS, OR OTHER MARKINGS TO THIS DOCUMENT ARE NOT PERMITTED AND INVALIDATE OUR CERTIFICATION.

COPYRIGHT ENGINEERING EXPRESS®

20-25067

SCALE: NTS UNLESS NOTED

2

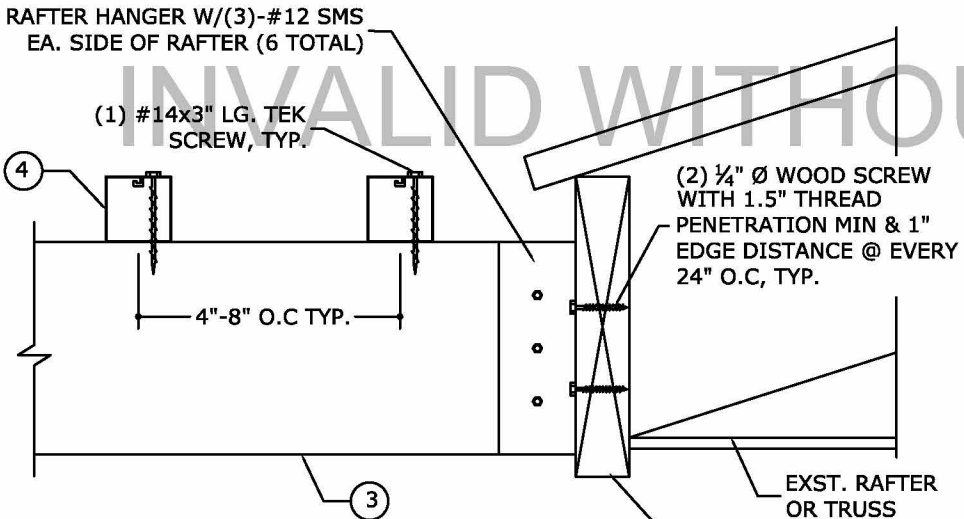
C:\Users\colby\Engineering Express\Production - Documents\Projects\20-25067 Elite-Naturewood Pergola Lattice\WP\20-25067a Elite Naturewood Lattice.dwg

VALID
S

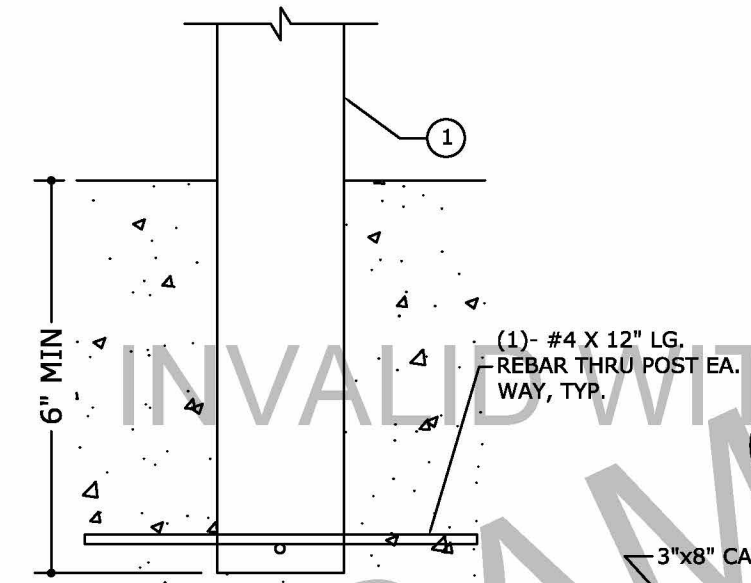
THE

OF

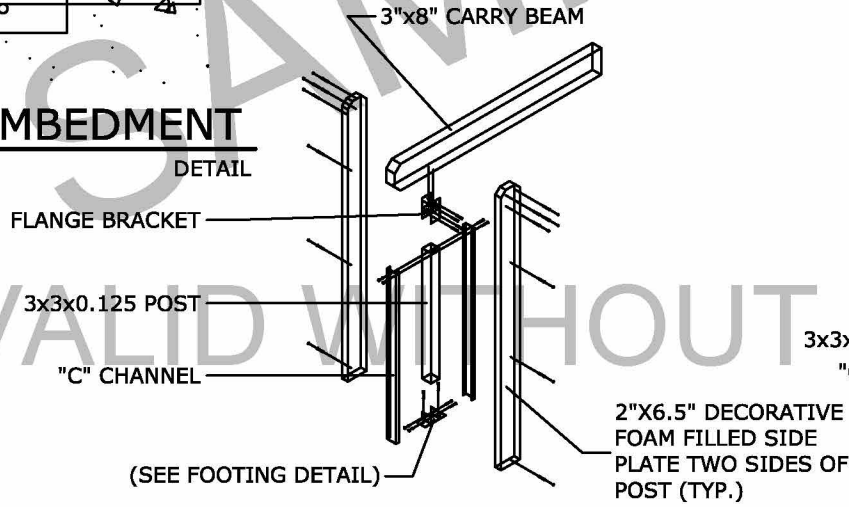
CONNECTION DETAILS



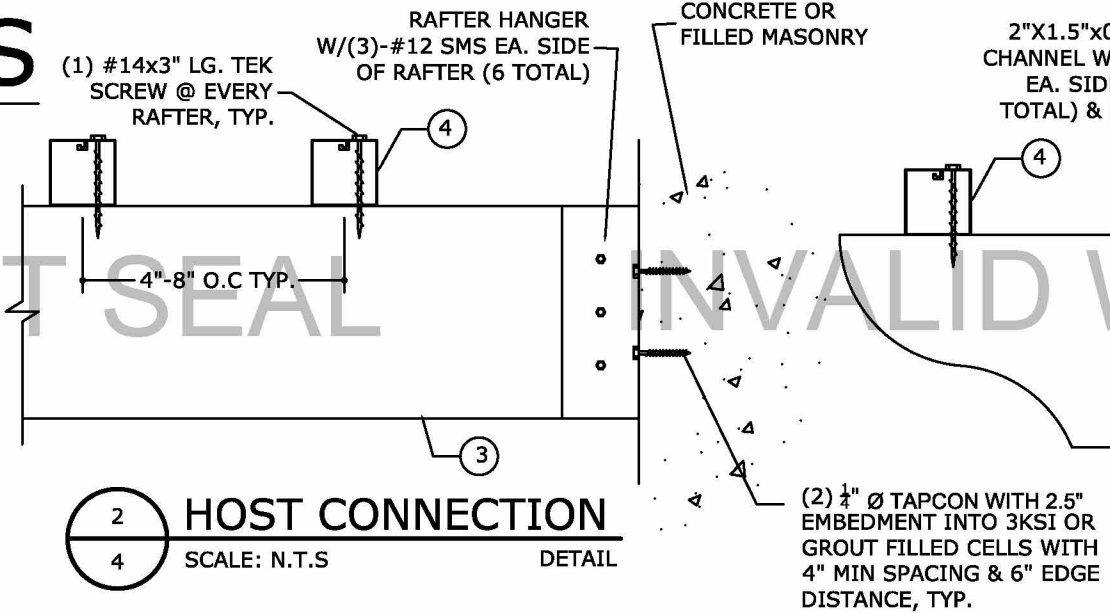
1
4 FASCIA/WALL CONNECTION
SCALE: N.T.S. DETAIL



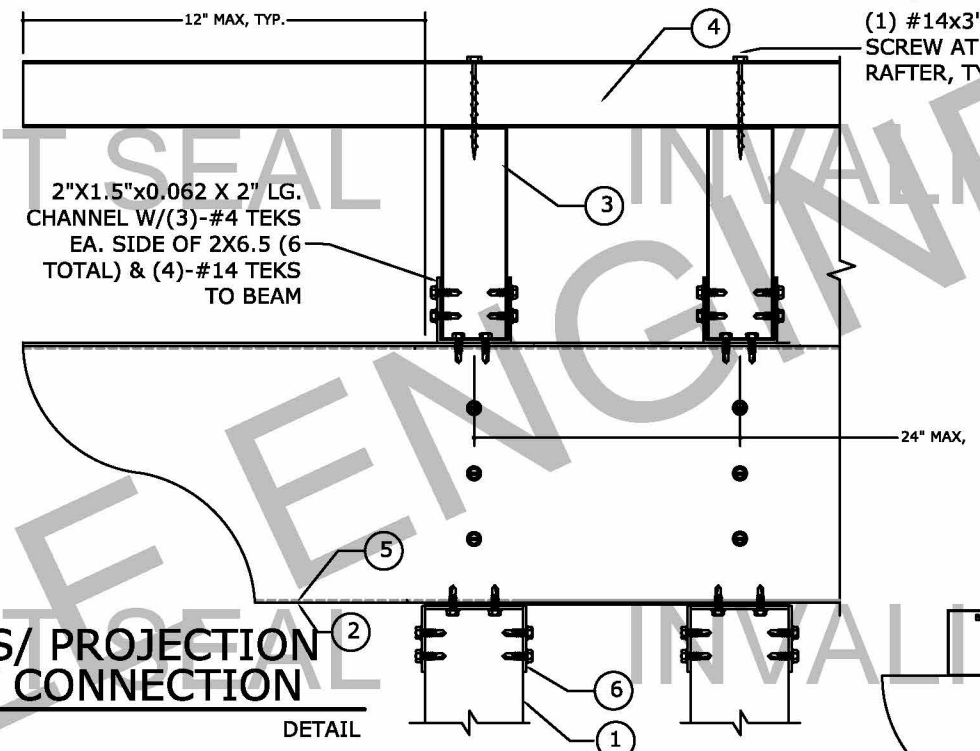
5
4 POST EMBEDMENT
SCALE: N.T.S. DETAIL



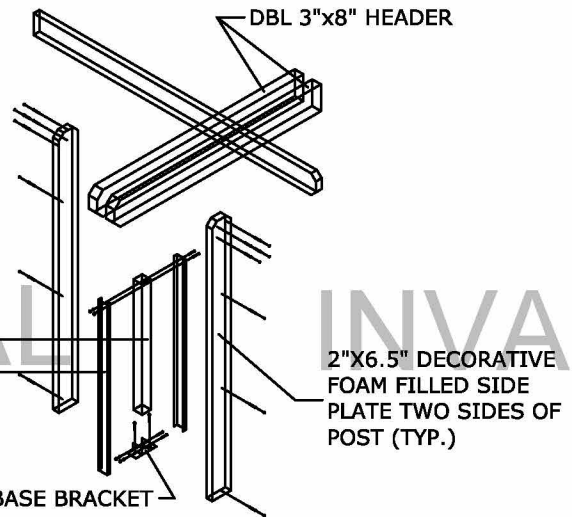
7
4 COLUMN COVER SINGLE BEAM
SCALE: N.T.S. DETAIL



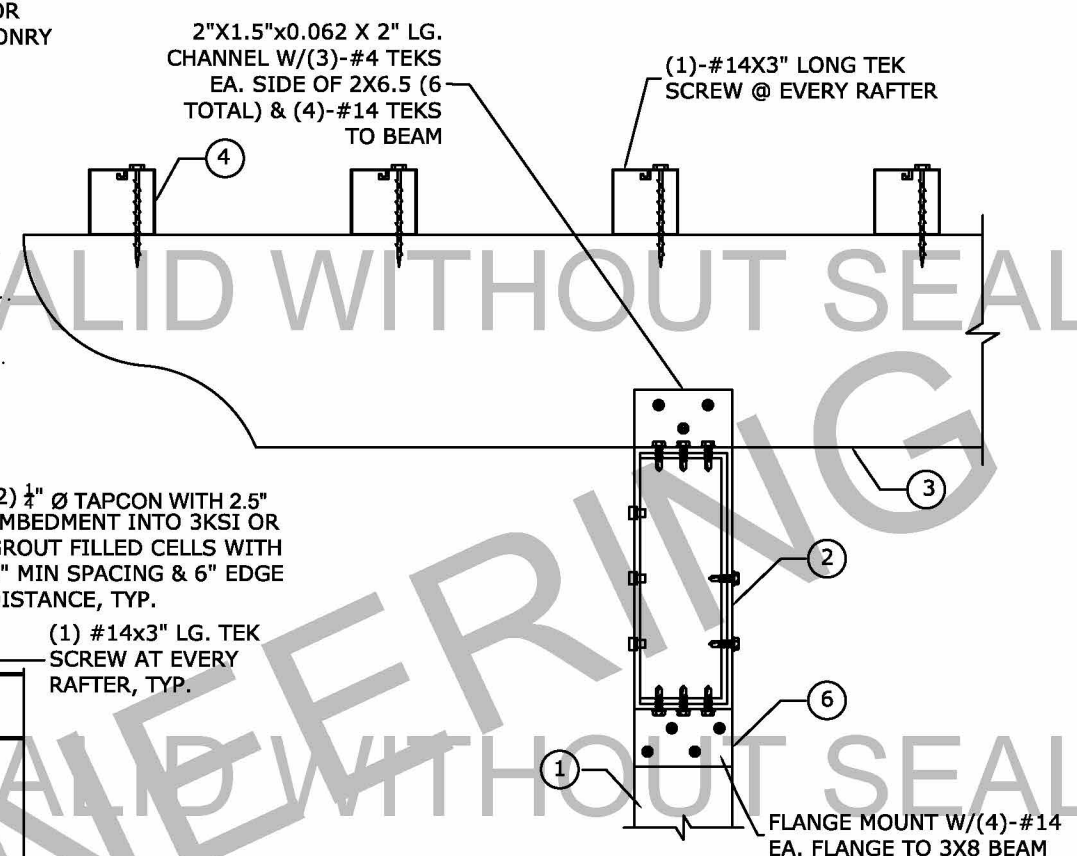
2
4 HOST CONNECTION
SCALE: N.T.S. DETAIL



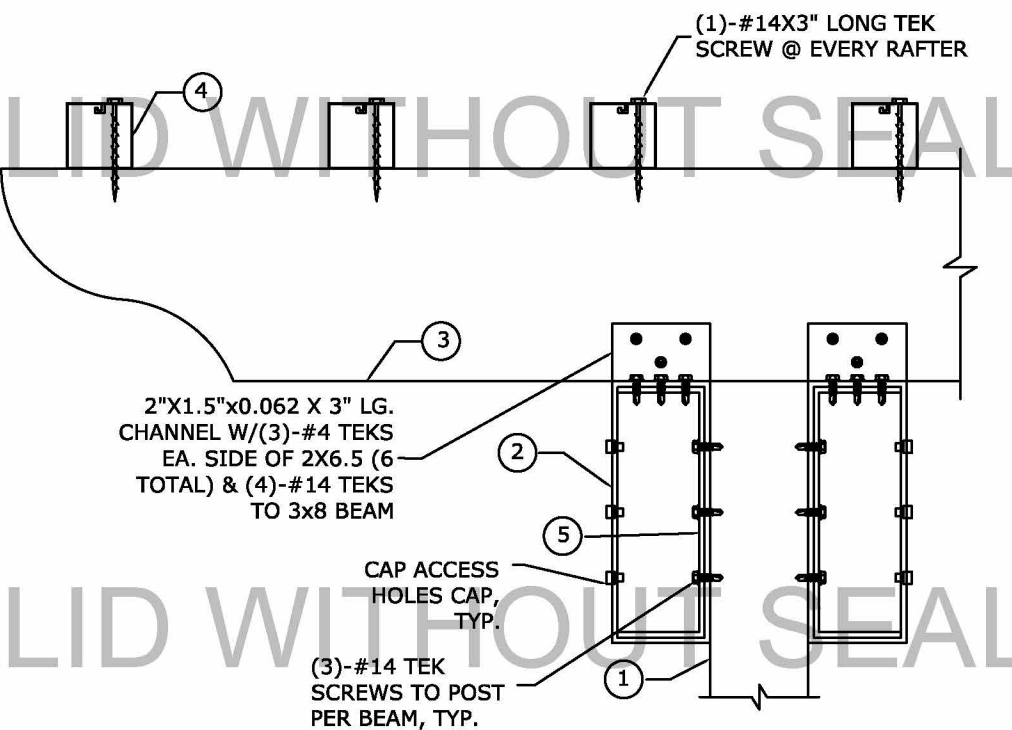
4
4 TRELLIS / PROJECTION & POST CONNECTION
SCALE: N.T.S. DETAIL



8
4 COLUMN COVER DOUBLE BEAM
SCALE: N.T.S. DETAIL



3
4 LATTICE / PROJECTION & POST CONNECTION
SCALE: N.T.S. DETAIL



6
4 LATTICE / PROJECTION & POST CONNECTION
SCALE: N.T.S. DETAIL

02/04/2021

CERTIFYING ENGINEER IS THE NAME LISTED ON THE SEAL

VALID FOR 1 PERMIT ONLY U.N.O.

DIGITAL SEAL NOTICE:
IF THIS DOCUMENT IS DIGITALLY SIGNED, THIS SHEET IS PART OF A DIGITALLY SIGNED FILE. IT SHALL REMAIN IN DIGITAL FORMAT, SHALL BE VERIFIED BY ELECTRONIC MEANS, & PRINTED COPIES OF THIS DOCUMENT ARE NOT CONSIDERED SIGNED AND SEALED.

PRINTED DOCUMENT NOTICE:
IF THIS DOCUMENT IS PRINTED & DOES NOT CONTAIN AN ENGINEER'S ORIGINAL SIGNATURE & SEAL, THIS DOCUMENT IS VOID & NOT VALID FOR USE. PHOTOCOPIES ARE NOT PERMITTED FOR USE.

ENGINEERING EXPRESS

CORPORATE OFFICE:
160 SW 12th AVE, SUITE 106
DEERFIELD BEACH, FL 33442
P: (954) 354-0660 F: (954) 354-0443
OFFICE@ENGINEERINGEXPRESS.COM
ENGINEERINGEXPRESS.COM

ELITE ALUMINUM, INC.
4650 LYONS TECHNOLOGY PKWY
COCONUT CREEK, FL
(954) 949-3200

NATUREWOOD LATTICE
MASTER PLAN SHEET

| REMARKS | DRWN | CHKD | DATE |
|------------|------|------|----------|
| INIT ISSUE | LAO | TSB | 08/07/19 |
| UPDATE | ADB | FLB | 09/19/19 |

THIS DOCUMENT IS THE PROPERTY OF ENGINEERING EXPRESS, AND SHALL NOT BE REPRODUCED IN WHOLE OR PART WITHOUT WRITTEN CONSENT OF ENGINEERING EXPRESS. ALTERATIONS, ADDITIONS, OR OTHER MARKINGS TO THIS DOCUMENT ARE NOT PERMITTED AND INVALIDATE OUR CERTIFICATION.

COPYRIGHT ENGINEERING EXPRESS®

20-25067

SCALE: NTS UNLESS NOTED

4

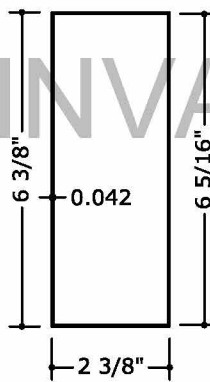
C:\Users\colby\OneDrive\Engineering Express\Production - Documents\Projects\20-25067 Elite- Naturewood Pergola Lattice\WP20-25067a Elite Naturewood Lattice.dwg 02/04/2021 - 3:17pm colby

MAIN BEAM (EPS OR STEEL OPTIONS)

STRUCTURAL COMPONENTS

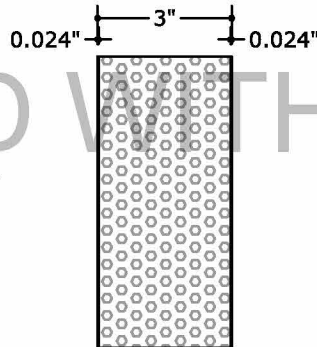
ALL STRUCTURAL PARTS TO BE ALUMINUM 6063-T6 NON-WELDED

NON-REINFORCED



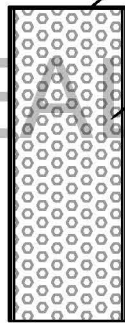
2 CARRY BEAM
5 SCALE: N.T.S. DETAIL

EPS REINFORCING



5A 3" THICK SANDWICH ALUMINUM
5 -FOAM EPS PANEL REINFORCEMENT
SCALE: N.T.S. DETAIL

REINFORCED BEAM

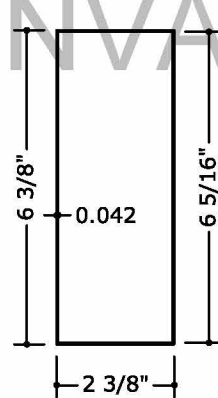


SIZE PANEL TO FIT,
SHIM ANY REMAINING
GAP, TYP.

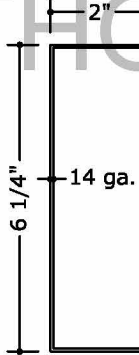
2A REINFORCED
5 CARRY BEAM (2+5)
SCALE: N.T.S. DETAIL

EPS REINFORCING PANEL NOTES

- SHALL BE CONTINUOUS
- SHALL BE FULL DEPTH & LENGTH
- FOAM CORE SHALL BE ADHERED TO ALUMINUM WITH ISOG RIP SP2020 BY ASHLAND SPECIALTY
- EPS FOAM SHALL HAVE A MINIMUM DENSITY OF 0.95 PCF

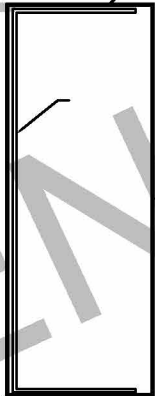


2 CARRY BEAM
5 SCALE: N.T.S. DETAIL

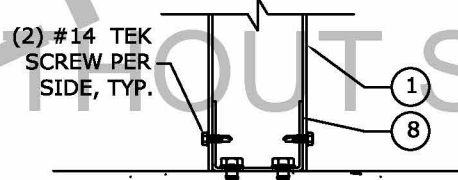


5B STEEL INSERT
5 SCALE: N.T.S. DETAIL
COLD FORM STEEL ASTM A653 GR 37 MIN.

SHIM ANY REMAINING
GAP, TYP.



2B REINFORCED
5 CARRY BEAM (2+5B)
SCALE: N.T.S. DETAIL

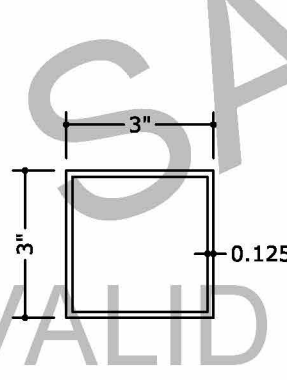


(2) #14 TEK
SCREW PER
SIDE, TYP.

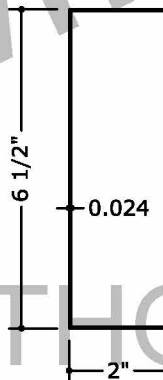
(4) 3/8"Ø POWER-DEWALT
WEDGE BOLT+, 3"
EMBEDMENT, 1.5" SPACING,
4.5" MIN. EDGE DISTANCE
INTO 3KSI MIN. CONCRETE:

9 ALT MOUNT DETAIL
5 SCALE: N.T.S. DETAIL

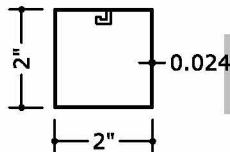
COMPONENTS



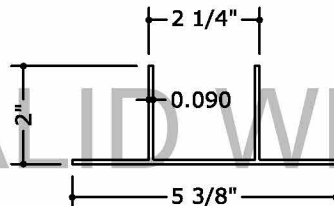
1 LATTICE
5 POST
SCALE: N.T.S. DETAIL



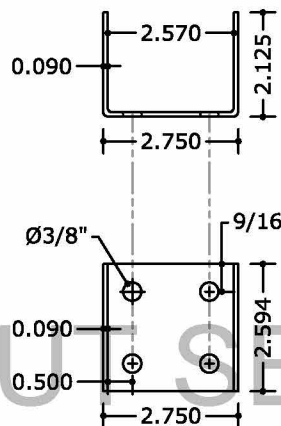
3 RAFTER
5 SCALE: N.T.S. DETAIL



4 LATTICE
5 SCALE: N.T.S. DETAIL



6 FLANGE MOUNT
5 SCALE: N.T.S. DETAIL



8 MOUNT BRACKET
5 SCALE: N.T.S. DETAIL

FOR HOST ATTACHED SYSTEM ONLY

02/04/2021

CERTIFYING ENGINEER IS THE NAME LISTED ON THE SEAL

VALID FOR 1 PERMIT ONLY U.N.O.

DIGITAL SEAL NOTICE:
IF THIS DOCUMENT IS DIGITALLY SIGNED, THIS SHEET IS PART OF A DIGITALLY SIGNED FILE. IT SHALL REMAIN IN DIGITAL FORMAT, SHALL BE VERIFIED BY ELECTRONIC MEANS, & PRINTED COPIES OF THIS DOCUMENT ARE NOT CONSIDERED SIGNED AND SEALED.

PRINTED DOCUMENT NOTICE:
IF THIS DOCUMENT IS PRINTED & DOES NOT CONTAIN AN ENGINEER'S ORIGINAL SIGNATURE & SEAL, THIS DOCUMENT IS VOID & NOT VALID FOR USE. PHOTOCOPIES ARE NOT PERMITTED FOR USE.

ENGINEERING EXPRESS®

CORPORATE OFFICE:
160 SW 12th AVE, SUITE 106
DEERFIELD BEACH, FL 33442
P: (954) 354-0660 F: (954) 354-0443
OFFICE@ENGINEERINGEXPRESS.COM
ENGINEERINGEXPRESS.COM

ELITE ALUMINUM, INC.

4650 LYONS TECHNOLOGY PKWY
COCONUT CREEK, FL
(954) 949-3200

NATUREWOOD LATTICE
MASTER PLAN SHEET

| REMARKS | DRWN | CHKD | DATE |
|------------|------|------|----------|
| INIT ISSUE | LAO | TSB | 08/07/19 |
| UPDATE | ADB | FLB | 09/19/19 |

THIS DOCUMENT IS THE PROPERTY OF ENGINEERING EXPRESS, AND SHALL NOT BE REPRODUCED IN WHOLE OR PART WITHOUT WRITTEN CONSENT OF ENGINEERING EXPRESS. ALTERATIONS, ADDITIONS, OR OTHER MARKINGS TO THIS DOCUMENT ARE NOT PERMITTED AND INVALIDATE OUR CERTIFICATION.

COPYRIGHT ENGINEERING EXPRESS®

20-25067

SCALE: NTS UNLESS NOTED

5

C:\Users\colby\Engineering\Express\Production - Documents\Projects\20-25067 Elite- Naturewood Pergola Lattice\WP\20-25067a Elite Naturewood Lattice.dwg 02/04/2021 - 3:17pm colby

TABLE 4 ISOLATED FOOTINGS

| GROUND SNOW (PSF) | ISOLATED FOOTING DIMENSIONS | | | | | | | | | |
|-------------------------|---|---|--------|--------|--------|--------|--------|--------|--------|--------|
| | WIND PRESSURE (PSF) | | 10 | | 15 | | 20 | | 25 | |
| 10 | DIMENSION | | W | D | W | D | W | D | W | D |
| | CARRY BEAM C/C SPACING (FOR MAX RAFTER PROJECTION) | 13.0 ' | 14.0 " | 14.0 " | - | - | - | - | - | - |
| | | 12.0 ' | 14.0 " | 14.0 " | 18.0 " | 14.0 " | - | - | - | - |
| | | 10.0 ' | 14.0 " | 14.0 " | 16.0 " | 14.0 " | 18.0 " | 14.0 " | 18.0 " | 16.0 " |
| | | 8.0 ' | 14.0 " | 12.0 " | 16.0 " | 14.0 " | 16.0 " | 15.0 " | 18.0 " | 15.0 " |
| 20 | CARRY BEAM C/C SPACING (FOR MAX RAFTER PROJECTION) | 10.0 ' | 12.0 " | 12.0 " | | | | | | |
| | | 9.0 ' | 12.0 " | 12.0 " | 15.0 " | 14.0 " | 16.0 " | 14.0 " | 18.0 " | 14.0 " |
| | | 8.0 ' | 12.0 " | 12.0 " | 14.0 " | 14.0 " | 15.0 " | 15.0 " | 16.0 " | 16.0 " |
| | | 6.0 ' | 12.0 " | 12.0 " | 14.0 " | 12.0 " | 14.0 " | 14.0 " | 15.0 " | 14.0 " |
| | 4.0 ' | 12.0 " | 12.0 " | 12.0 " | 12.0 " | 14.0 " | 12.0 " | 14.0 " | 12.0 " | |
| 30 | CARRY BEAM C/C SPACING (FOR MAX RAFTER PROJECTION) | 9.0 ' | 12.0 " | 12.0 " | 14.0 " | 14.0 " | - | - | - | - |
| | | 8.0 ' | 12.0 " | 12.0 " | 14.0 " | 14.0 " | 15.0 " | 14.0 " | 16.0 " | 15.0 " |
| | | 6.0 ' | 12.0 " | 12.0 " | 14.0 " | 12.0 " | 14.0 " | 14.0 " | 15.0 " | 15.0 " |
| | | 4.0 ' | 12.0 " | 12.0 " | 12.0 " | 12.0 " | 14.0 " | 12.0 " | 14.0 " | 12.0 " |
| | 40 | CARRY BEAM C/C SPACING (FOR MAX RAFTER PROJECTION) | 8.0 ' | 12.0 " | 12.0 " | 14.0 " | 14.0 " | 16.0 " | 12.0 " | - |
| 7.0 ' | | | 12.0 " | 12.0 " | 14.0 " | 12.0 " | 14.0 " | 14.0 " | 16.0 " | 12.0 " |
| 6.0 ' | | | 12.0 " | 12.0 " | 14.0 " | 12.0 " | 14.0 " | 14.0 " | 16.0 " | 12.0 " |
| 4.0 ' | | | 12.0 " | 12.0 " | 12.0 " | 12.0 " | 12.0 " | 12.0 " | 14.0 " | 12.0 " |
| 60 | | CARRY BEAM C/C SPACING (FOR MAX RAFTER PROJECTION) | 7.0 ' | 12.0 " | 12.0 " | 14.0 " | 12.0 " | 14.0 " | 12.0 " | - |
| | 6.0 ' | | 12.0 " | 12.0 " | 12.0 " | 12.0 " | 14.0 " | 12.0 " | 14.0 " | 14.0 " |
| | 5.0 ' | | 12.0 " | 12.0 " | 12.0 " | 12.0 " | 14.0 " | 12.0 " | 14.0 " | 12.0 " |
| | 4.0 ' | | 12.0 " | 12.0 " | 12.0 " | 12.0 " | 12.0 " | 12.0 " | 14.0 " | 12.0 " |

ISOLATED FOOTING NOTES

1. W= WIDTH, D= DEPTH, SQUARE FOOTING (UNLESS OTHERWISE NOTED HEREIN).
2. CONCRETE TO BE 3,000 PSI MIN.
3. MINIMUM SOIL BEARING CAPACITY 2,000 PSI.
4. SEE DETAIL 5/4 FOR MORE INFORMATION.
5. ADHERE TO ALL FROST LINE EMBEDMENTS TO PREVENT HEAVE

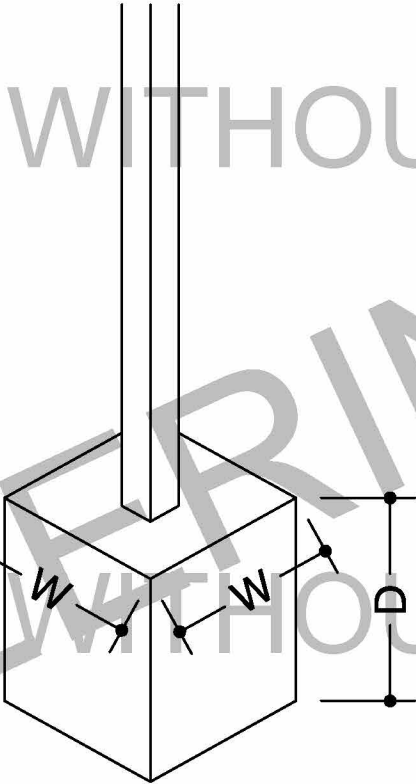


TABLE 5 STRIP FOOTING

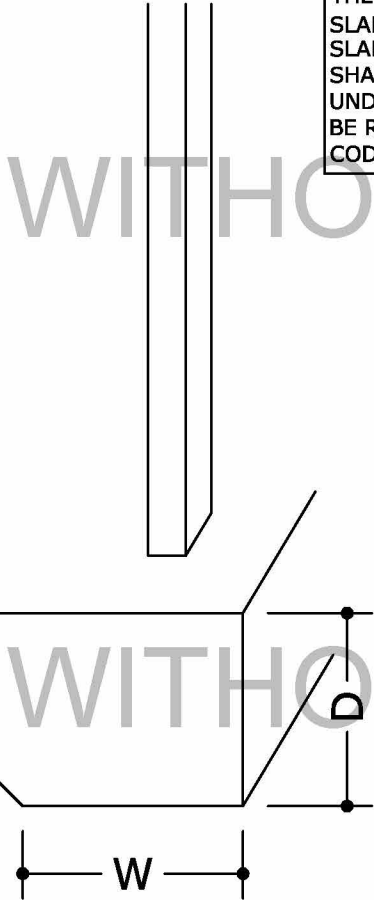
| GROUND SNOW (PSF) | STRIP FOOTING DIMENSIONS | | | | | | | | | |
|-------------------------|--------------------------|-------|-------|-------|-------|-------|-------|-------|-------|--|
| | WIND PRESSURE (PSF) | 10 | | 15 | | 20 | | 25 | | |
| 10 | DIMENSION | W | D | W | D | W | D | W | D | |
| | 13.0' | 12.0" | 12.0" | - | - | - | - | - | - | |
| | 12.0' | 12.0" | 12.0" | 12.0" | 12.0" | - | - | - | - | |
| | 10.0' | 12.0" | 12.0" | 12.0" | 12.0" | 12.0" | 12.0" | 12.0" | 12.0" | |
| 20 | 8.0' | 12.0" | 12.0" | 12.0" | 12.0" | 12.0" | 12.0" | 12.0" | 12.0" | |
| | 10.0' | 12.0" | 12.0" | - | - | - | - | - | - | |
| | 9.0' | 12.0" | 12.0" | 12.0" | 12.0" | 12.0" | 12.0" | 12.0" | 12.0" | |
| | 8.0' | 12.0" | 12.0" | 12.0" | 12.0" | 12.0" | 12.0" | 12.0" | 12.0" | |
| 30 | 6.0' | 12.0" | 12.0" | 12.0" | 12.0" | 12.0" | 12.0" | 12.0" | 12.0" | |
| | 4.0' | 12.0" | 12.0" | 12.0" | 12.0" | 12.0" | 12.0" | 12.0" | 12.0" | |
| | 9.0' | 12.0" | 12.0" | 12.0" | 12.0" | - | - | - | - | |
| | 8.0' | 12.0" | 12.0" | 12.0" | 12.0" | 12.0" | 12.0" | 12.0" | 12.0" | |
| 40 | 6.0' | 12.0" | 12.0" | 12.0" | 12.0" | 12.0" | 12.0" | 12.0" | 12.0" | |
| | 4.0' | 12.0" | 12.0" | 12.0" | 12.0" | 12.0" | 12.0" | 12.0" | 12.0" | |
| | 8.0' | 12.0" | 12.0" | 12.0" | 12.0" | 12.0" | 12.0" | - | - | |
| | 7.0' | 12.0" | 12.0" | 12.0" | 12.0" | 12.0" | 12.0" | 12.0" | 12.0" | |
| 60 | 6.0' | 12.0" | 12.0" | 12.0" | 12.0" | 12.0" | 12.0" | 12.0" | 12.0" | |
| | 5.0' | 12.0" | 12.0" | 12.0" | 12.0" | 12.0" | 12.0" | 12.0" | 12.0" | |
| | 4.0' | 12.0" | 12.0" | 12.0" | 12.0" | 12.0" | 12.0" | 12.0" | 12.0" | |
| | 7.0' | 12.0" | 12.0" | 12.0" | 12.0" | 12.0" | 12.0" | - | - | |

STRIP FOOTING NOTES

1. W= WIDTH, D= DEPTH (UNLESS OTHERWISE NOTED HEREIN).
2. CONCRETE TO BE 3,000 PSI MIN
3. MINIMUM SOIL BEARING CAPACITY 2,000 PSI.
4. SLAB TO BE 4" MIN. THICK.
5. SLAB LENGTH TO BE SAME AS LATTICE RAFTER.
6. COLUMN TO BE 12" MIN. EMBED.
7. USE (2) #5 BARS CONTINUOUS, 6 X 6 1.4/1.4 WWF SLAB REINF, DOUBLE 30" BACK IN 4" SLAB

POST TO SLAB NOTE: POSTS MAY BE ATTACHED CONCRETE SLAB WITHOUT THE USE OF FOOTERS SO LONG AS THE SLAB THICKNESS IS A MINIMUM OF 5½" SLAB SHALL BE CONTINUOUS AND SHALL COVER THE ENTIRE AREA UNDERNEATH THE CANOPY AND SHALL BE REINFORCED PER THE MINIMUM CODE REQUIREMENTS (BY OTHERS)

NOTE: FOOTING INFORMATION FOR GENERAL SIZING ONLY. CONTRACTOR IS TO ADHERE TO ALL CODE MINIMUM REQUIREMENTS FOR PROPER INSTALLATION OF FOOTINGS WHICH IS BEYOND THE SCOPE OF THESE SIZING TABLES.



02/04/2021

CERTIFYING ENGINEER IS THE NAME LISTED ON THE SEAL

VALID FOR 1 PERMIT ONLY U.N.O.

DIGITAL SEAL NOTICE:
IF THIS DOCUMENT IS DIGITALLY SIGNED, THIS SHEET IS PART OF A DIGITALLY SIGNED FILE. IT SHALL REMAIN IN DIGITAL FORMAT, SHALL BE VERIFIED BY ELECTRONIC MEANS, & PRINTED COPIES OF THIS DOCUMENT ARE NOT CONSIDERED SIGNED AND SEALED.

PRINTED DOCUMENT NOTICE:
IF THIS DOCUMENT IS PRINTED & DOES NOT CONTAIN AN ENGINEER'S ORIGINAL SIGNATURE & SEAL, THIS DOCUMENT IS VOID & NOT VALID FOR USE. PHOTOCOPIES ARE NOT PERMITTED FOR USE.

ENGINEERING EXPRESS®

CORPORATE OFFICE:
160 SW 12th AVE, SUITE 106
DEERFIELD BEACH, FL 33442
P: (954) 354-0660 F: (954) 354-0443
OFFICE@ENGINEERINGEXPRESS.COM
ENGINEERINGEXPRESS.COM

ELITE ALUMINUM, INC.

4650 LYONS TECHNOLOGY PKWY
COCONUT CREEK, FL
(954) 949-3200

NATUREWOOD LATTICE
MASTER PLAN SHEET

| | | |
|------|------|----------|
| DRWN | CHKD | DATE |
| LAO | TSB | 08/07/19 |
| ADB | FLB | 09/19/19 |

REMARKS
INIT
ISSUE
UPDATE

THIS DOCUMENT IS THE PROPERTY OF ENGINEERING EXPRESS, AND SHALL NOT BE REPRODUCED IN WHOLE OR PART WITHOUT WRITTEN CONSENT OF ENGINEERING EXPRESS. ALTERATIONS, ADDITIONS, OR OTHER MARKINGS TO THIS DOCUMENT ARE NOT PERMITTED AND INVALIDATE OUR CERTIFICATION.

COPYRIGHT ENGINEERING EXPRESS®

20-25067

SCALE: NTS UNLESS NOTED

6