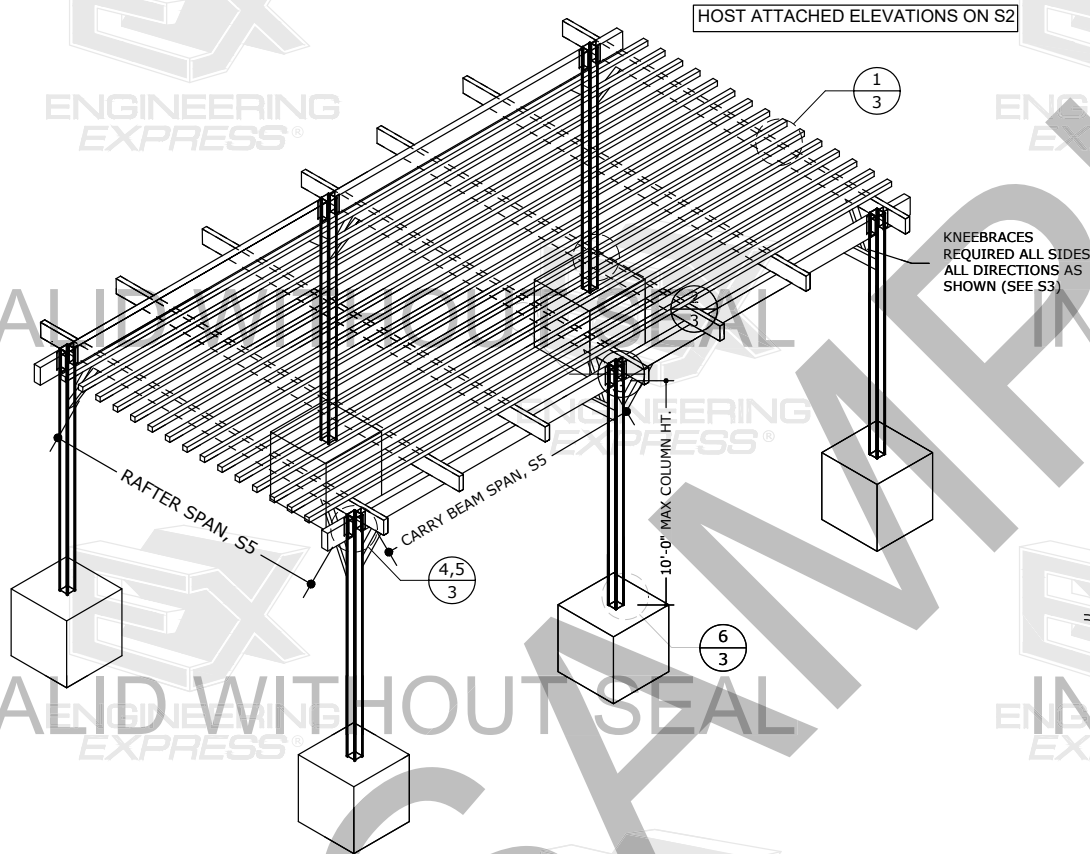




MECHANICALLY FASTENED LATTICE

STRUCTALL TRELLIS MASTER PLAN SHEET

FREESTANDING OR HOST-ATTACHED



OTHER INSTALLATION NOTES

1. STRUCTURAL ALUMINUM SHALL BE FRAMED PLUMB AND TRUE AND ADEQUATELY BRACED DURING CONSTRUCTION.
2. WHERE ALUMINUM IS IN CONTACT WITH OTHER METALS EXCEPT 300 SERIES STAINLESS STEEL, ZINC OR CADMIUM AND THE FAYING SURFACES ARE EXPOSED TO MOISTURE, THE OTHER METALS SHALL BE PAINTED OR COATED WITH ZINC, CADMIUM, OR ALUMINUM.
3. UNCOATED ALUMINUM SHALL NOT BE EXPOSED TO MOISTURE OR RUNOFF THAT HAS COME IN CONTACT WITH OTHER UNCOATED METALS EXCEPT 300 SERIES STAINLESS STEEL, ZINC, OR CADMIUM. ALUMINUM SURFACES TO BE PLACED IN CONTACT WITH MASONRY, CONCRETE, WOOD, FIBERBOARD, OR OTHER POROUS MATERIAL THAT ABSORBS WATER SHALL BE PAINTED.
4. ALUMINUM SHALL NOT BE EMBEDDED IN CONCRETE WITH CORROSIVE ADDITIVES SUCH AS CHLORIDES IF THE ALUMINUM IS ELECTRICALLY CONNECTED TO STEEL. ALUMINUM EMBEDDED IN CONCRETE SHALL BE WRAPPED WITH 10 M L PIPE WRAP OR PLASTIC TAPE.
5. AS AN ALTERNATIVE TO THE PREVIOUS REQUIREMENTS FOR ALUMINUM IN CONTACT WITH OTHER MATERIALS, ALUMINUM SHALL BE SEPARATED FROM THE MATERIALS OF THIS SECTION BY A NONPOROUS ISOLATOR COMPATIBLE WITH THE ALUMINUM AND THE DISSIMILAR MATERIAL.
6. BOLT HOLES SHALL BE DRILLED THE SAME NOMINAL DIAMETER AS THE BOLT + 1/16"
7. STAINLESS STEEL FASTENERS SHALL BE ASTM F593 316 SS COLD WORKED CONDITION. PROVIDE (5) PITCHES MINIMUM PAST THE THREAD PLANE FOR ALL SCREW CONNECTIONS. ALL FASTENER CONNECTIONS TO METAL SHALL PROVIDE 2xDIAMETER EDGE DISTANCE AND 3xDIAMETER SPACING.
8. SELF-DRILLING SCREWS SHALL BE TEK BRAND / ALL POINTS FASTENERS, UNLESS OTHERWISE NOTED.

DESIGN NOTES:

WORK HAS BEEN DESIGNED IN ACCORDANCE WITH THE 2015/2018 INTERNATIONAL BUILDING CODES, 6th EDITION (2017) & 7th EDITION (2020) FLORIDA BUILDING CODES. SITE SPECIFIC APPLICATIONS SHALL BE LESS THAN OR EQUAL TO THE POSITIVE OR NEGATIVE DESIGN PRESSURE CAPACITY VALUES LISTED HEREIN FOR ANY ASSEMBLY AS SHOWN IN ACCORDANCE WITH ASCE 7-10 OR ASCE 7-16 AS APPLICABLE FOR CORRESPONDING CODE. PERFORMANCE VALUES LISTED APPLY TO BOTH CODES.

GENERAL NOTES:

1. CONTRACTOR SHALL INVESTIGATE AND CONFORM TO ALL LOCAL BUILDING CODE AMENDMENTS WHICH MAY APPLY AND GOVERN. DESIGN CRITERIA OR SPANS BEYOND STATED HEREIN MAY REQUIRE ADDITIONAL SITE SPECIFIC SEALED ENGINEERING.
2. THE EXISTING HOST STRUCTURE MUST BE CAPABLE OF SUPPORTING THE LOADED SYSTEM AS VERIFIED BY THE ENGINEER & OR ARCHITECT OF RECORD, et.al. THE HOST STRUCTURE WHICH IS DESIGNED, CERTIFIED, AND INSPECTED BY OTHERS MUST PROVIDE SUFFICIENT, CAPACITY FOR THIS SPECIFIED DECK SYSTEM. NO WARRANTY OR GUARANTEE TO THESE CONDITIONS, EITHER EXPRESSED OR IMPLIED, IS OFFERED WITH THIS CERTIFICATION.
3. THE CONTRACTOR SHALL CAREFULLY CONSIDER POSSIBLE IMPOSING LOADS ON ROOF, INCLUDING BUT NOT LIMITED TO ANY CONCENTRATED LOADS WHICH MAY JUSTIFY GREATER DESIGN CRITERIA.
4. THE INSTALLATION OF ANY ACCESSORIES THAT DO NOT AFFECT THE STRUCTURAL INTEGRITY OF THE STRUCTURE ARE OUTSIDE THE SCOPE OF THIS CERTIFICATION AND NOT REQUIRED TO BE CERTIFIED UNDER THIS STRUCTURAL DRAWING. THEY MAY BE INSTALLED AS DESIRED PER MFR. SPECIFICATIONS.
5. ALL FASTENERS TO BE #14 OR GREATER ASTM F593 COLD WORKED 316 STAINLESS STEEL, UNLESS NOTED OTHERWISE. FASTENERS SHALL BE CADMIUM-PLATED OR OTHERWISE CORROSION-RESISTANT MATERIAL AND SHALL COMPLY WITH "SPECIFICATIONS FOR ALUMINUM STRUCTURES" SECTION J.3.7.2 BY THE ALUMINUM ASSOCIATION, INC., & ANY APPLICABLE FEDERAL, STATE, AND/OR LOCAL CODES. $F_y = 65$ KSI MIN.
6. ANCHORS SHALL BE INSTALLED IN ACCORDANCE WITH MANUFACTURERS' RECOMMENDATIONS. EMBEDMENT SHALL BE AS NOTED HEREIN. MINIMUM EMBEDMENT AND EDGE DISTANCE EXCLUDES STUCCO, FOAM, BRICK, AND OTHER WALL FINISHES.
7. ALL CONCRETE ANCHORS SHALL BE INSTALLED TO NON-CRACKED CONCRETE ONLY.
8. ALUMINUM TO BE 6063-T6 OR BETTER.
9. THE CONTRACTOR IS RESPONSIBLE TO INSULATE ALL MEMBERS FROM DISSIMILAR MATERIALS TO PREVENT ELECTROLYSIS.
10. ALL LIGHT GAUGE STEEL MEMBERS SHALL CONFORM TO ASTM A36 AND CURRENT EDITION OF AISC WITH MINIMUM $F_y = 55$ KSI.
11. ALL CONCRETE AND EPOXY TO REACH A MINIMUM COMPRESSIVE STRENGTH OF 3000 PSI IN 7 DAYS.
12. HOST STRUCTURE, MECHANICAL, EGRESS, ELECTRICAL, WIRING, FAN BEAMS, FANS, OR ANY ACCESSORY ATTACHMENTS
13. ENGINEER SEAL AFFIXED HERETO VALIDATES STRUCTURAL DESIGN AS SHOWN ONLY. USE OF THIS SPECIFICATION BY CONTRACTOR, et. al. INDEMNIFIES & SAVES HARMLESS THIS ENGINEER FOR ALL COST & DAMAGES INCLUDING LEGAL FEES & APPELLATE FEES RESULTING FROM MATERIAL FABRICATION, SYSTEM ERECTION, & CONSTRUCTION PRACTICES BEYOND THAT WHICH IS CALLED FOR BY LOCAL, STATE, & FEDERAL CODES & FROM DEVIATIONS OF THIS PLAN. AFFIRMATIONS ARE INTENDED.

VISIT ECALC.IO/26255

FOR ENGINEER CERTIFIED ORIGINALS
& MORE INFORMATION ABOUT THIS DOCUMENT
OR SCAN THE QR CODE TO THE RIGHT >

VISIT ENGINEERINGEXPRESS.COM/STRUCTALL
FOR ADDITIONAL PLANS, REPORTS & RESOURCES



FRANK BENNARDO PE
07/28/2020

NOTICE: IF THIS SHEET DOES NOT CONTAIN AN ORIGINAL SIGNATURE & ENGINEER SEAL, IT IS NOT A COPY/DRAFT. IF THERE IS A DIGITAL SIGNATURE ON SHEET 1, THIS SHEET IS PART OF A DIGITALLY SIGNED FILE. SHALL REMAIN IN DIGITAL FORMAT, & PRINTED COPIES OF THIS DOCUMENT ARE NOT CONSIDERED SIGNED AND SEALED. IF THERE IS NO DIGITAL SIGNATURE ON SHEET 1, OR THIS SHEET DOES NOT CONTAIN AN ENGINEER'S ORIGINAL SIGNATURE & SEAL, THIS SHEET IS A COPY/DRAFT.

ENGINEERING EXPRESS
CORPORATE OFFICE:
160 SW 12th AVE, SUITE 106
DEERFIELD BEACH, FL 33442
(954) 354-0660 | (866) 396-9999
TEAM@ENGINEERINGEXPRESS.COM
ENGINEERINGEXPRESS.COM

STRUCTALL BUILDING SYSTEMS, INC.
350 BURGANK RD
OLDSMAR, FL
(813) 855-2627
TRELLIS - MECHANICALLY FASTENED LATTICE

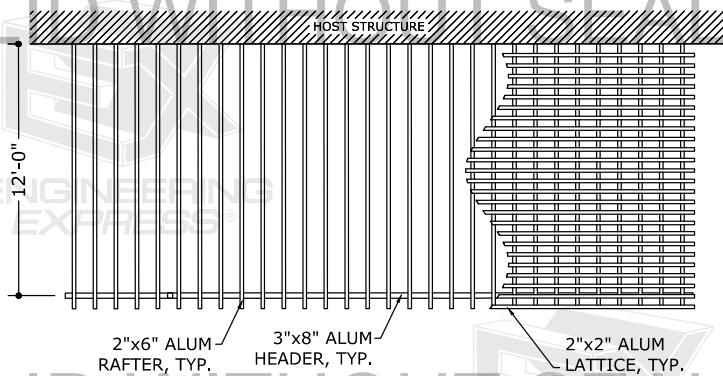
DRWN CHD DATE
TT FB 06/10/20
REMARKS
UPDATE 2020

COPYRIGHT ENGINEERING EXPRESS
20-26255

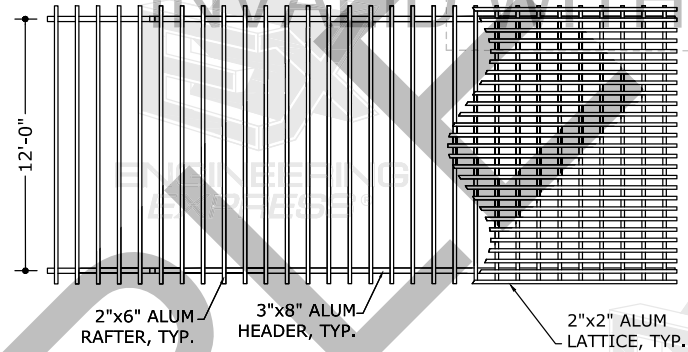
SCALE: NTS UNLESS NOTED

1 OF 6

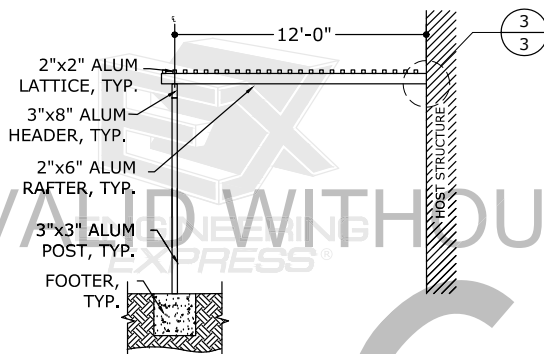
ELEVATIONS:



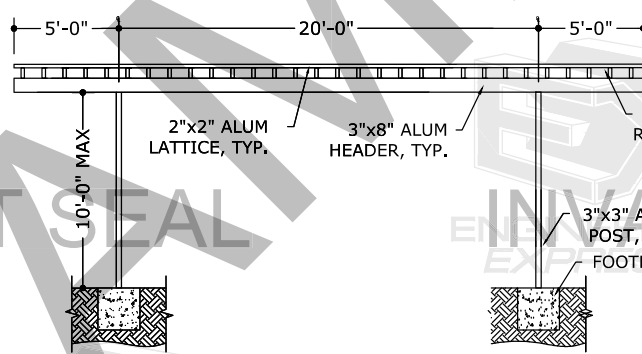
1 HOST ATTACHED
2 N.T.S. PLAN VIEW



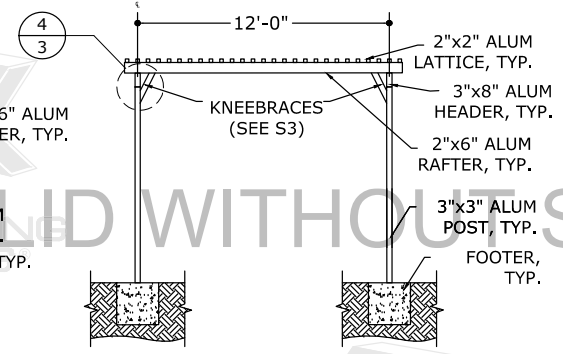
2 FREESTANDING
2 N.T.S. PLAN VIEW



3 HOST ATTACHED
2 N.T.S. SIDE VIEW



4 HOST ATTACHED & FREESTANDING
2 N.T.S. FRONT VIEW



5 FREESTANDING
2 N.T.S. SIDE VIEW

FRANK BENNARDO PE
07/28/2020

NOT CONTAIN AN ORIGINAL SIGNATURE & ENGINEER SEAL. IF THERE IS A DIGITAL SIGNATURE ON SHEET 1, THIS SHEET IS PART OF A DIGITALLY SIGNED FILE, SHALL REMAIN IN DIGITAL FORMAT, & PRINTED COPIES OF THIS DOCUMENT ARE NOT CONSIDERED SIGNED AND SEALED. IF THERE IS NO DIGITAL SIGNATURE ON SHEET 1, OR THIS SHEET DOES NOT CONTAIN AN ENGINEER'S ORIGINAL SIGNATURE & SEAL, THIS SHEET IS A COPY/DRAFT.

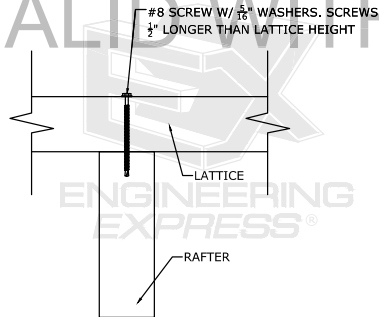
ENGINEERING EXPRESS
CORPORATE OFFICE:
160 SW 12th AVE, SUITE 106
DEERFIELD BEACH, FL 33442
(954) 354-0660 | (866) 396-9999
TEAM@ENGINEERINGEXPRESS.COM
ENGINEERINGEXPRESS.COM

STRUCTURAL BUILDING SYSTEMS, INC.
350 BURBANK RD
OLDSMAR, FL
(813) 855-2627
TRELLIS - MECHANICALLY FASTENED LATTICE

REMARKS	DATE	DRWN	CHKD
UPDATE 2020	06/10/20	TT	TT

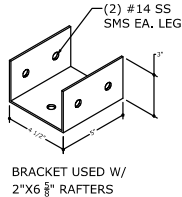
COPYRIGHT ENGINEERING EXPRESS®
20-26255
SCALE: NTS UNLESS NOTED

CONNECTIONS:

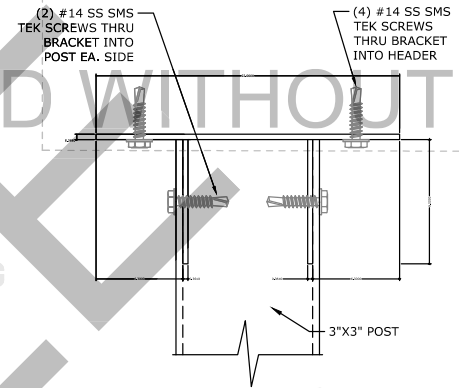


1 LATTICE TO RAFTER
3 N.T.S. ELEVATION VIEW

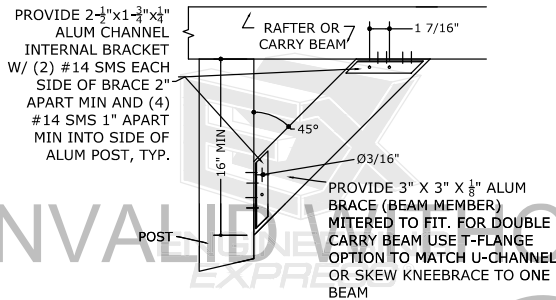
RAFTER TO HEADER CONNECTION
BRACKETS 6063T6 ALUM ALLOY, T=0.060"



2 RAFTER TO CARRY BEAM
3 N.T.S. ISOMETRIC VIEW



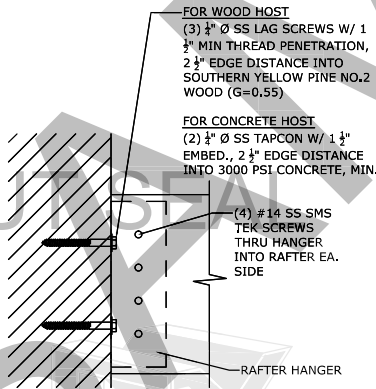
3 RAFTER TO HOST CONNECTION
3 N.T.S. ELEVATION VIEW



NOTE: KNEEBRACES SHALL BE PROVIDED IN BOTH DIRECTIONS AT ALL SUPPORTING POSTS

NOTE: MITRE KNEEBRACES TO FIT AROUND PURLINS AT RAFTER CONNECTION POINTS AS NEEDED. MAINTAIN ANCHORAGE INTEGRITY.

4 KNEEBRACE TO POST & RAFTER
3 N.T.S. ELEVATION VIEW



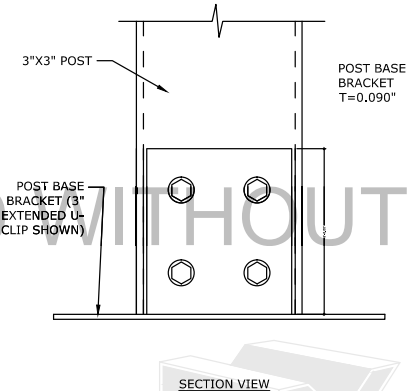
5 RAFTER TO HOST
3 N.T.S. ELEVATION VIEW

RAFTER HANGER 6063-T5 ALUM. ALLOY T=0.078"

L=1.92" FOR 2"x6 5/8" RAFTERS
L=2.92" FOR 3"x8" RAFTERS

H=5 1/2" FOR 2"x6 5/8" RAFTERS
H=7 1/2" FOR 3"x8" RAFTERS

B=1 1/2" FOR 2"x6 5/8" RAFTERS
B=2 1/4" FOR 3"x8" RAFTERS



6 POST BASE
3 N.T.S. ELEVATION VIEW

FRANK BENNARDO PE
07/28/2020

NOT CONTAIN A DIGITAL SIGNATURE & ENGINEER SEAL. IF THERE IS A DIGITAL SIGNATURE ON SHEET 1, THIS SHEET IS PART OF A DIGITALLY SIGNED FILE. SHALL REMAIN IN DIGITAL FORMAT, & PRINTED COPIES OF THIS DOCUMENT ARE NOT CONSIDERED SIGNED AND SEALED. IF THERE IS NO DIGITAL SIGNATURE ON SHEET 1, OR THIS SHEET DOES NOT CONTAIN AN ENGINEER'S ORIGINAL SIGNATURE & SEAL, THIS SHEET IS A COPY/DRAFT.

ENGINEERING EXPRESS
CORPORATE OFFICE:
160 SW 12TH AVE, SUITE 106
DEERFIELD BEACH, FL 33442
(954) 354-0660 | (866) 396-9999
TEAM@ENGINEERINGEXPRESS.COM
ENGINEERINGEXPRESS.COM

STRUCTALL BUILDING SYSTEMS, INC.
350 BURBANK RD
OLDSMAR, FL
(813) 855-2627
TRELIS - MECHANICALLY FASTENED LATTICE

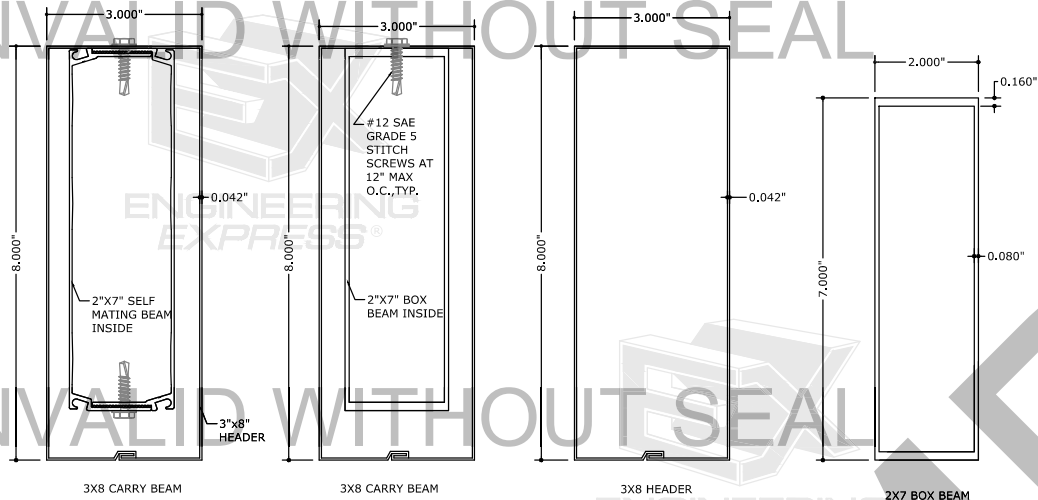
DATE: 06/10/20
DRWN: CHD
CHKD: TT
TT
REMARKS: UPDATE 2020
THIS DOCUMENT IS THE PROPERTY OF ENGINEERING EXPRESS, AND SHALL NOT BE REPRODUCED IN WHOLE OR PART WITHOUT WRITTEN PERMISSION. ANY UNAUTHORIZED REPRODUCTION, ADDITIONS, OR OTHER MARKINGS TO THIS DOCUMENT ARE NOT PERMITTED AND INVALIDATE OUR CERTIFICATION.

COPYRIGHT ENGINEERING EXPRESS
20-26255
SCALE: NTS UNLESS NOTED

3

EXTRUSIONS:

CARRY BEAM



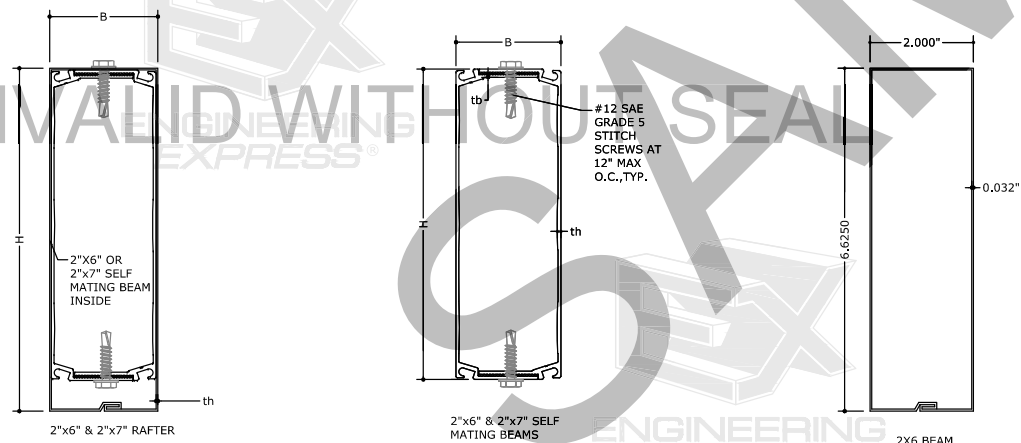
RAFTERS

RAFTER TABLE:

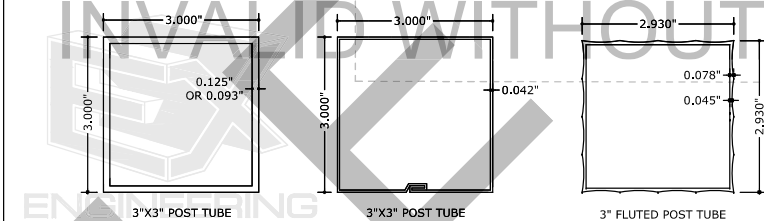
BEAM TYPE	B	H	th
2"x6"	2"	6.625"	0.032"
2"x7"	2"	7.625"	0.032"

SELF MATING BEAM TABLE:

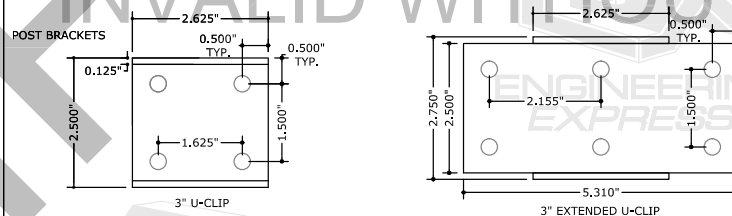
BEAM TYPE	B	H	tb	th
2"x6" SMB	2"	6"	0.060"	0.065"
2"x7" SMB	2"	7"	0.060"	0.057"



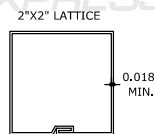
POSTS



CLIPS



LATTICE



FRANK BENNARDO PE

07/28/2020

NOT CONTAIN A DIGITAL SIGNATURE & ENGINEER SEAL. IF THERE IS A DIGITAL SIGNATURE ON SHEET 1, THIS SHEET IS PART OF A DIGITALLY SIGNED FILE, SHALL REMAIN IN DIGITAL FORMAT, & PRINTED COPIES OF THIS DOCUMENT ARE NOT CONSIDERED SIGNED AND SEALED. IF THERE IS NO DIGITAL SIGNATURE ON SHEET 1, OR THIS SHEET DOES NOT CONTAIN AN ENGINEER'S ORIGINAL SIGNATURE & SEAL, THIS SHEET IS A COPY/DRAFT.

ENGINEERING EXPRESS
CORPORATE OFFICE:
160 SW 12th AVE, SUITE 106
DEERFIELD BEACH, FL 33442
(954) 354-0660 | (866) 396-9999
TEAM@ENGINEERINGEXPRESS.COM
ENGINEERINGEXPRESS.COM

STRUCTURAL BUILDING SYSTEMS, INC.
350 BURBANK RD
OLDSMAR, FL
(813) 855-2627
TRELLIS - MECHANICALLY FASTENED LATTICE

DATE: 06/10/20
DRWN: CHD
CHKD: FB
TT: TT
REMARKS: UPDATE 2020
THIS DOCUMENT IS THE PROPERTY OF ENGINEERING EXPRESS, AND SHALL NOT BE REPRODUCED IN WHOLE OR PART WITHOUT THE WRITTEN PERMISSION OF ENGINEERING EXPRESS. ANY ADDITIONS, OR OTHER MARKINGS TO THIS DOCUMENT ARE NOT PERMITTED AND INVALIDATE OUR CERTIFICATION.

COPYRIGHT ENGINEERING EXPRESS

20-26255

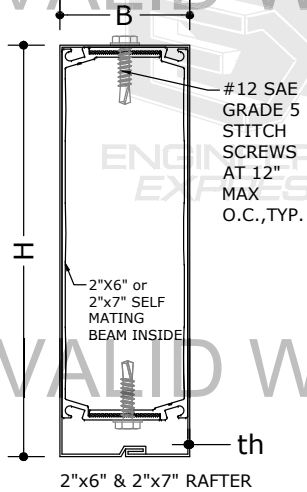
SCALE: NTS UNLESS NOTED

4

TABLES:

SELF MATING BEAM SCHEDULE:

BEAM TYPE	B	H	tb	th
2"x6" SMB	2"	6"	0.060"	0.065"
2"x7" SMB	2"	7"	0.060"	0.057"



BEAM TYPE	TOTAL ALLOWABLE RAFTER SPAN TABLE			
	Purlin Spacing	Load (PSF)	Rafter Spacing, in	Rafter Span
2"x6" Beam	4"	20	24	20'-0"
		30	24	20'-0"
		40	24	20'-0"
		50	24	20'-0"
		60	24	19'-4"

BEAM TYPE	TOTAL ALLOWABLE RAFTER SPAN TABLE			
	Purlin Spacing	Load (PSF)	Rafter Spacing, in	Rafter Span
2"x7" Beam	4"	20	24	20'-0"
		30	24	20'-0"
		40	24	20'-0"
		50	24	20'-0"
		60	24	19'-10"

BEAM TYPE	CARRY BEAM CLEAR SPAN TABLE			
	Purlin Spacing	Load (PSF)	Rafter Span (PSF)	CARRY BEAM SPAN
3"x8" Header	4"	20	10	17'-4"
			20	12'-10"
		30	10	14'-2"
			20	10'-6"
		40	10	12'-3"
			20	9'-1"
		50	10	11'-0"
			20	8'-1"

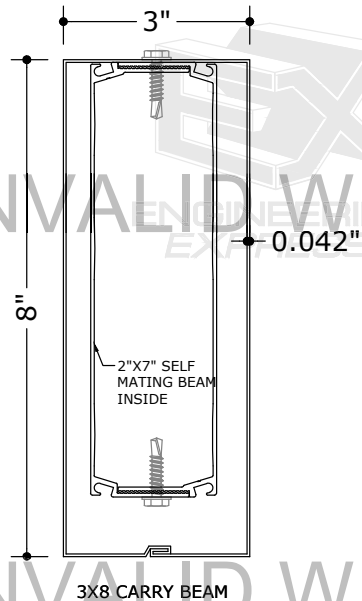


TABLE NOTES:

1. WORK DESIGNED PER 2015 ALUMINUM DESIGN MANUAL
2. DEFLECTION LIMITS SET TO L/60
3. TABLED CONSIDER LOAD OVER ENTIRE SURFACE DUE TO BUILD-UP OF SNOW & ICE.
4. SNOW DRIFT SHALL BE CONSIDERED SEPARATELY BY THE SITE SPECIFIC DESIGN & FACTORED INTO TOTAL LOADS HEREIN. CONSULT AN ENGINEER OR ARCHITECT FOR ANY DISCREPANCIES OR DIFFERENCES IN DESIGN TO ACTUAL FIELD CONDITIONS.
5. SPANS ARE CLEAR SPANS, SPACING IS C/C.
6. GREATER PURLIN SPACING MAY BE USED WITHOUT AFFECTING TABLE RESULTS.

FRANK BENNARDO PE
07/28/2020

NOTICE: IF THIS SHEET DOES NOT CONTAIN AN ORIGINAL SIGNATURE & ENGINEER SEAL, IF THERE IS A DIGITAL SIGNATURE ON SHEET 1, THIS SHEET IS PART OF A DIGITALLY SIGNED FILE, SHALL REMAIN IN DIGITAL FORMAT, & PRINTED COPIES OF THIS DOCUMENT ARE NOT CONSIDERED SIGNED AND SEALED. IF THERE IS NO DIGITAL SIGNATURE ON SHEET 1, OR THIS SHEET DOES NOT CONTAIN AN ENGINEER'S ORIGINAL SIGNATURE & SEAL, THIS SHEET IS A COPY/DRAFT.

ENGINEERING EXPRESS
CORPORATE OFFICE:
160 SW 12th AVE, SUITE 106
DEERFIELD BEACH, FL 33442
(954) 354-0660 | (866) 396-9999
TEAM@ENGINEERINGEXPRESS.COM
ENGINEERINGEXPRESS.COM

STRUCTURAL BUILDING SYSTEMS, INC.
350 BURBANK RD
OLDSMAR, FL
(813) 855-2627
TIRELLIS - MECHANICALLY FASTENED LATTICE

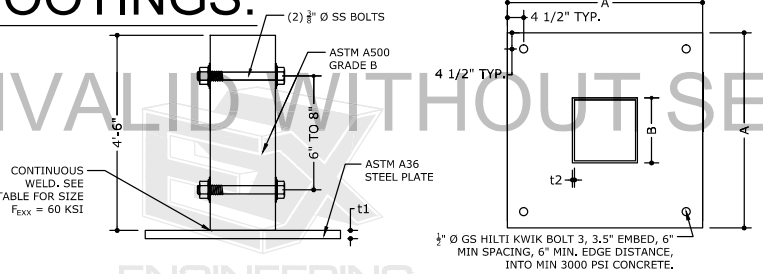
DATE: 06/10/20
DRWN/CHKD: TT
REMARKS: UPDATE 2020
THIS DOCUMENT IS THE PROPERTY OF ENGINEERING EXPRESS, AND SHALL NOT BE REPRODUCED IN WHOLE OR PART WITHOUT THE WRITTEN PERMISSION OF ENGINEERING EXPRESS. ANY REPRODUCTION OR OTHER VIOLATIONS TO THIS DOCUMENT ARE NOT PERMITTED AND INVALIDATE OUR CERTIFICATION.

COPYRIGHT ENGINEERING EXPRESS
20-26255

SCALE: NTS UNLESS NOTED

5

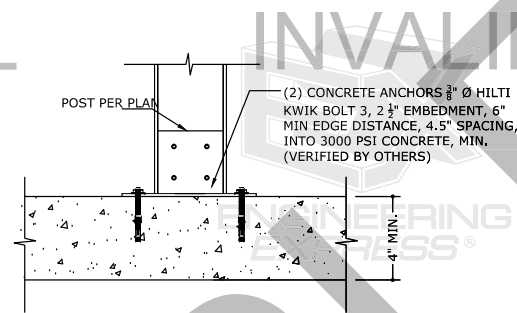
FOOTINGS:



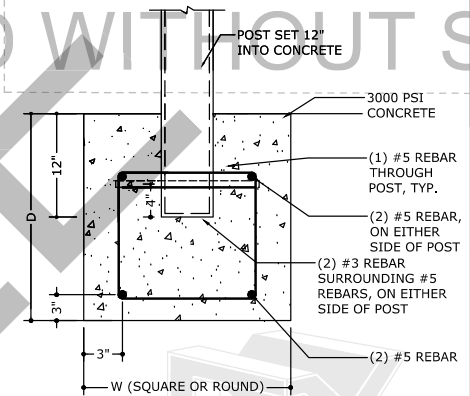
ALLOWED ON MAX. CONSTRAINED FOOTING SIZE D (IN)	PLATE SIZE A (IN)	PLATE THICKNESS t1 (IN)	STUB POST SIZE B (IN)	STUB POST THICKNESS t2 (IN)	MINIMUM WELD SIZE	MAXIMUM DIMENSION OF LONG SIDE OF CANOPY (FT)
24	12	0.375	2.5	0.125	0.125	20

- NOTE:**
- WELDED MOMENT-RESISTING STEEL BASE PLATE, ALTERNATIVE TO POST EMBEDMENT IN CONCRETE FOOTING WHERE APPLICABLE, WELDED POST BRACKET MUST BE FABRICATED IN ACCORDANCE FBC/IBC SECTION 1704.2.5.1 BY AN APPROVED FABRICATOR TO THE SATISFACTION OF THE CODE OFFICIAL
 - CONNECTION CHECKED FOR PURE BENDING
 - MAXIMUM DIMENSION OF LONG SIDE OF CANOPY TO COMPLY WITH MAXIMUM ALLOWABLE SPANS IN MASTER CHARTS
 - ANALYSIS FOR MAXIMUM FREESTANDING CANOPY SIZE TAKING 115 MPH WIND SPEED, EXPOSURE 'C', POST HEIGHT = 10 FT & BEAM DEPTH 8 IN. HOST ATTACHED CANOPY VALID UP TO 150MPH EXPOSURE 'C'.
 - ADDITIONAL ENGINEERING REQUIRED BEYOND THIS WIND LIMIT.

1 WELDED STEEL BASEPLATE
6 N.T.S. ELEVATION VIEW



2 SURFACE MOUNT POST
6 N.T.S. ELEVATION VIEW



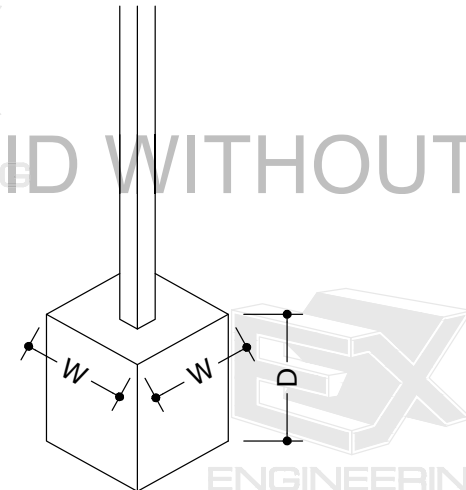
3 POST EMBEDDED IN FOOTER
6 N.T.S. ELEVATION VIEW
VALID UP TO 170MPH EXPOSURE 'C' WITH KNEEBRACES AS SHOWN

TABLE ISOLATED FOOTINGS

GROUND SNOW (PSF)	ISOLATED FOOTING DIMENSIONS									
	WIND PRESSURE (PSF)	10		15		20		25		
		W	D	W	D	W	D	W	D	
10	CARRY BEAM C/C SPACING (FOR MAX RAFTER PROJECTION)	DIMENSION								
		13.0 ' 14.0 " 14.0 " - - - - - -								
		12.0 ' 14.0 " 14.0 " 18.0 " 14.0 " - - - - -								
		10.0 ' 14.0 " 14.0 " 16.0 " 14.0 " 18.0 " 14.0 " 18.0 " 16.0 "								
20		8.0 ' 14.0 " 12.0 " 16.0 " 14.0 " 16.0 " 15.0 " 18.0 " 15.0 "								
		10.0 ' 12.0 " 12.0 " - - - - - -								
		9.0 ' 12.0 " 12.0 " 15.0 " 14.0 " 16.0 " 14.0 " 18.0 " 14.0 "								
		8.0 ' 12.0 " 12.0 " 14.0 " 14.0 " 15.0 " 15.0 " 16.0 " 16.0 "								
30		6.0 ' 12.0 " 12.0 " 14.0 " 12.0 " 14.0 " 14.0 " 15.0 " 14.0 "								
		4.0 ' 12.0 " 12.0 " 12.0 " 12.0 " 14.0 " 12.0 " 14.0 " 12.0 "								
		9.0 ' 12.0 " 12.0 " 14.0 " 14.0 " - - - - -								
		8.0 ' 12.0 " 12.0 " 14.0 " 14.0 " 15.0 " 14.0 " 16.0 " 15.0 "								
40		6.0 ' 12.0 " 12.0 " 14.0 " 12.0 " 14.0 " 14.0 " 15.0 " 15.0 "								
		4.0 ' 12.0 " 12.0 " 12.0 " 12.0 " 14.0 " 12.0 " 14.0 " 12.0 "								
		8.0 ' 12.0 " 12.0 " 14.0 " 14.0 " 16.0 " 12.0 " - - -								
		7.0 ' 12.0 " 12.0 " 14.0 " 12.0 " 14.0 " 14.0 " 16.0 " 12.0 "								
60		6.0 ' 12.0 " 12.0 " 14.0 " 12.0 " 14.0 " 14.0 " 16.0 " 12.0 "								
		4.0 ' 12.0 " 12.0 " 12.0 " 12.0 " 12.0 " 12.0 " 14.0 " 12.0 "								
		7.0 ' 12.0 " 12.0 " 14.0 " 12.0 " 14.0 " 12.0 " - - -								
		6.0 ' 12.0 " 12.0 " 12.0 " 12.0 " 14.0 " 12.0 " 14.0 " 14.0 "								
		5.0 ' 12.0 " 12.0 " 12.0 " 12.0 " 12.0 " 14.0 " 12.0 " 14.0 " 12.0 "								
	4.0 ' 12.0 " 12.0 " 12.0 " 12.0 " 12.0 " 12.0 " 12.0 " 14.0 " 12.0 "									

ISOLATED FOOTING NOTES

- W= WIDTH, D= DEPTH, SQUARE FOOTING (FOR ROUND FOOTINGS W=DIAMETER).
- CONCRETE TO BE 3,000 PSI MIN.
- MINIMUM SOIL BEARING CAPACITY 2,000 PSI.
- SEE DETAIL 5/4 & 3/6 FOR MORE INFORMATION.
- ADHERE TO ALL FROST LINE EMBEDMENTS TO PREVENT HEAVE. CONSULT LOCAL CODES FOR PLACEMENT BELOW GRADE.



FRANK BENNARDO PE
07/28/2020

NOT CONTAIN AN ORIGINAL SIGNATURE & ENGINEER SEAL. IF THERE IS A DIGITAL SIGNATURE ON SHEET 1, THIS SHEET IS PART OF A DIGITALLY SIGNED FILE, SHALL REMAIN IN DIGITAL FORMAT, & PRINTED COPIES OF THIS DOCUMENT ARE NOT CONSIDERED SIGNED AND SEALED. IF THERE IS NO DIGITAL SIGNATURE ON SHEET 1, OR THIS SHEET DOES NOT CONTAIN AN ENGINEER'S ORIGINAL SIGNATURE & SEAL, THIS SHEET IS A COPY/DRAFT.

ENGINEERING EXPRESS
CORPORATE OFFICE:
160 SW 12th AVE, SUITE 106
DEERFIELD BEACH, FL 33442
(954) 354-0660 | (866) 396-9999
TEAM@ENGINEERINGEXPRESS.COM
ENGINEERINGEXPRESS.COM

STRUCTALL BUILDING SYSTEMS, INC.
350 BURBANK RD
OLDSMAR, FL
(813) 855-2627
TIRELLIS - MECHANICALLY FASTENED LATTICE

DATE: 06/10/20
DRWN: CHD
CHKD: FB
TT:
REMARKS: UPDATE 2020
THIS DOCUMENT IS THE PROPERTY OF ENGINEERING EXPRESS, AND SHALL NOT BE REPRODUCED IN WHOLE OR PART WITHOUT THE WRITTEN PERMISSION OF ENGINEERING EXPRESS. ANY ADDITIONS, OR OTHER MARKINGS TO THIS DOCUMENT ARE NOT PERMITTED AND INVALIDATE OUR CERTIFICATION.

COPYRIGHT ENGINEERING EXPRESS
20-26255
SCALE: NTS UNLESS NOTED

6