

# Model of Energy Consumption Ratio Achievable in MANET Using Location-Aware Transmission in Ubicomp.

M. Kaleem GALAMALI, Assoc. Prof Nawaz MOHAMUDALLY

**Abstract** – Efficient Location tracking is still subject to research and new functionalities/applications depending on it are continuing to appear on the market [37-52]. An area where improvements will be very desirable is MANET communication over which ubicomp will rely. A big section missing in MAUC remains the software engineering approaches into metrics development and gathering appropriate models which can be used for prediction and better gearing of future investments and research [2]. A particular sub-section of concern here is energy considerations in MANETs. Quite some results of prior research has been put forward [14-17] which are more directly concerned with energy. The subsequent level is “metrics indirectly concerned with energy for transmission”. One such topic of research is: “What is the ratio of energy consumption for each node over the energy consumed by the sender? What are the corresponding patterns of trend observable for different sets of node densities? How to predict the trend equations and using them for predictive probability calculations.

The area of modelling in ubicomp involves much work and this paper adds to this area. Designers will use it to formulate better ubicomp architectures and components. This paper follows from previous work [1-17].

**Key terms:** Ubicomp- Ubiquitous Computing, MAUC- Mobile and Ubiquitous Computing, ECR- Energy Consumption Ratio, MANET- Mobile Adhoc Network, CBR- Constant Bit Rate. PCN\_ECR\_NN- % communicating nodes for ECR node\_number.

---

M. Kaleem GALAMALI,  
University of Technology Mauritius (student)  
Mauritius

Assoc. Prof Nawaz Mohamudally  
University of Technology Mauritius,  
Mauritius

## 1. Introduction

Many factors affect energy consumption in MAUC [2]. One pertinent factor is type of transmission; the type of concern here is MANET transmission, probing into which, a consequent factor is node density. Researchers claim that MANET transmission helps to contain or even save energy required for transmission [53]. When using MANETs, sender nodes together with those nodes forming part of MANET routes, are spending energy. These relay nodes could also be other user nodes instead of infrastructure nodes. Sender nodes

transmit to closest neighbouring node which subsequently transmits to next nearest neighbour. In effect, cooperation from MANET nodes is being expected. It is legitimate in cooperation to determine how much assistance, in this case energy requirements, it is being required to give compared to the sending node's effort itself together with corresponding trends for varying nodes densities.

This may be considered for a whole CBR transmission instead of per packet transmission, in which case, an added complication will be changes in MANET routes during CBR transmission as follows:

- i. The sequence of nodes in the MANET route till the destination has remained the same but the nodes locations have varied significantly.
- ii. Certain nodes have been removed from the route and the number of nodes in the MANET path has reduced (reduced hop count).
- iii. New nodes have been integrated into the route and hop count increases.
- iv. A combination of part (ii) and (iii) giving a totally different MANET paths.

The key contributions of this paper is firstly, the development of a new metric ECR (though an empirical simulation-based experiment as in previous paper [14]), including its definition and rationale, and secondly, the model of trend put forward for the metric ECR with results for varying node densities from 7 until 56. The model suggested here is split into 2:

➤ A straight line  $F(x)$  from left of the graph towards right until a peak value (at around ECR value 0.3)

$$F(x) = d*x + f$$

➤ As from the peak value, the trend is smoothly exponentially decreasing and asymptotic to the x-axis

$$G(x) = a * \exp ( b * ( x - c ) )$$

The rest of this paper is organised as follows: section 2- New Derived Metric- Energy Consumption Ratio, section 3- ECR Trend Assessment over Varying Node Numbers, 4- Conclusion and References.

## 2. New Derived Metric: Energy Consumption Ratio.

ECR is “the ratio of energy consumption for each node over the energy consumed by the sender node”.

The ratios obtained in the experiment [14] are positive values (rounded to 1 d.p) subdivided into 3 categories:

- i. ECR values less than 1: indicating that the corresponding MANET node has spent less energy than the sender for a CBR.
- ii. ECR values equal to 1: indicating that the corresponding MANET node has spent just as much energy as the sender node.
- iii. ECR values greater than 1: indicating that the corresponding MANET node has spent more energy than the sender node.

It is expected to have some significantly very high values of ratios. This metric and its trend model, if accurately gauged and tracked, can serve several purposes including:

- i. Decision formulation if a particular sub area of the topography is not having enough MANET nodes and need of deploying some support infrastructure nodes.
- ii. Decision formulation for sender nodes whether to continue transmission or to delay/reschedule a transmission in case excessively high ratios are encountered for long durations.
- iii. Decision formulation for a MANET node with battery power limitations to accept being part of the MANET route or not, i.e. to forward or not forward packets.
- iv. History tracking in each node about past ratios reached for each sender encountered before and formulate trust levels for each such node over suitable durations. This can also help in calibrating appropriate QoS in the MANET.
- v. Better understanding the trends of battery power durations and “lesser expected” sudden battery unavailability.
- vi. Traceability of nodes behaviour, whether user nodes in MANETs or Infrastructure nodes, of the reasons of certain odd behaviours like “refusal to forward”.

### 3. ECR Trend Assessment over Varying Node Numbers.

#### 3.0 Major Observations.

In all plots for node numbers 7 until 56, the leftmost plot at x-coordinate 0.0 has been very outlying with very high value of y-coordinate, though it decreases with increasing node numbers. Hence, this point has been ignored in trend analyses.

The rightmost plot was also very outlying with very low y-coordinate value. The x-range of plot was therefore set from 0.1 to a particular value covering more than 90 % of CBRs concerned. A peak value is observed in each plot at about ECR value of 0.3

#### 3.1 Tabular Summary of Results.

A tabular summary for results of equations of curves, F(x) and G(x), observed here is shown below. Column headings are: A→node number, B→Value of parameter d, C→Value of parameter f, D→ reduced Chi-square value of plot F(x), E→ ECR value of peak value, F→ Value of parameter a, G→ Value of parameter b, H→ Value of parameter c, I→ reduced chi-sq value of plot G(x), J→ Corresponding figure number.

A	B	C	D	E
7	5.940 69	3.362 2	0.000 511 145	0.3
8	4.507 8	3.077 6	0.001 021 47	0.3
9	4.034 64	3.054 23	0.005 758 42	0.3
10	2.096 76	3.783 69	0.001 765 82	0.3
11	4.322 69	3.248 31	0.018 839 5	0.3
12	1.952	3.690 14	0.003 899 15	0.4
13	2.279 62	3.759 85	0.010 879	0.3
14	4.352 02	3.236 65	0.101 868	0.3
15	3.710 093 8	3.332 448 6	0.053 823 3	0.3
16	4.738 8	3.081 72	0.068 762 8	0.3
17	2.15	3.632 83	0.012 575 1	0.4
18	3.132 81	3.504 61	0.003 774 68	0.3
19	4.263 51	3.268 85	0.050 117 3	0.3
20	3.847 17	3.409 16	0.019 158 3	0.3
21	3.321 9	3.503 77	0.023 901 9	0.3
22	2.163 09	3.649 73	0.007 697 94	0.4
23	2.779 89	3.470 53	0.006 103 93	0.4
24	2.497 33	3.561 69	0.002 819 74	0.4
25	2.710 02	3.491 18	0.022 097	0.4
26	3.245 37	3.313 86	0.012 074 3	0.4
27	4.478 49	2.982 81	0.024 073 5	0.4
28	7.307 01	2.464 72	0.003 274 5	0.3
29	5.731 8	2.630 28	0.107 78	0.4
30	5.401 64	2.688 92	0.094 788 6	0.4
31	5.110 26	2.824 05	0.064 038 2	0.4
32	5.271 74	2.751 43	0.074 203 2	0.4
33	5.002 11	2.784 87	0.042 379 9	0.4
34	3.955 88	2.925 82	0.057 008 1	0.5
35	4.659 23	2.750 58	0.042 745 6	0.5
36	4.507 02	2.786 1	0.048 802 2	0.5
37	4.152 49	2.821 42	0.085 102 5	0.5
38	3.324 88	2.957 5	0.131 676	0.6
39	3.234 01	2.978 33	0.114 479	0.6
40	4.023 93	2.818 01	0.083 081 7	0.5
41	4.405 28	2.694 86	0.065 973 4	0.5
42	4.483 4	2.629 14	0.035 289 9	0.5
43	4.204 27	2.696 03	0.137 071	0.5
44	3.505 71	2.800 79	0.170 698	0.6
45	4.589 95	2.561 91	0.182 989	0.5
46	4.450 92	2.593 55	0.210 606	0.3
47	4.793 34	2.513 28	0.200 68	0.5
48	5.190 37	2.371 41	0.191 954	0.5
49	4.961 26	2.471 99	0.216 034	0.5
50	6.961 42	2.147 83	0.116 048	0.4
51	3.584 41	2.832 94	0.266 299	0.6
52	6.856 32	2.118 69	0.106 486	0.4
53	6.840 83	2.156 76	0.080 302 2	0.4
54	6.823 93	2.166 98	0.113 065	0.4
55	6.370 4	2.300 29	0.108 518	0.4
56	4.662 87	2.629 45	0.168 434	0.5

Table 1(a): results for ECR equations of curves node num 7-56

A	F	G	H	I	J
7	6.494 98	-0.897 104	0.074 740 6	0.008 832 209	1
8	6.465 16	0.887 697	-0.080 717 5	0.006 152 9	2
9	6.472 65	-0.869 674	-0.042 113 9	0.008 469 15	3
10	6.452 58	-0.771 351	-0.145 444	0.004 669 44	4
11	6.452 99	-0.760 194	-0.142 774	0.003 863 23	5
12	6.463 41	-0.774 59	-0.089 579 3	0.003 057 61	6
13	6.453 15	-0.730 374	-0.140 17	0.003 671 51	7
14	6.453 88	-0.725 497	-0.136 093	0.004 483 37	8
15	6.450 42	-0.713 278	-0.152 728	0.004 274 22	9
16	6.456 52	-0.719 173	-0.122 255	0.004 056 04	10
17	6.465 78	-0.736 201	-0.075 892 7	0.002 638 1	11
18	6.458 1	-0.718 19	-0.114 144	0.003 022 96	12
19	6.456 72	-0.711 977	-0.120 715	0.002 805 84	13
20	6.459 39	-0.716 251	-0.107 495	0.003 022 07	14
21	6.461 12	-0.712 402	-0.098 488 4	0.002 968 7	15
22	6.472 06	-0.734 641	-0.043 702 7	0.002 126 66	16
23	6.474 51	-0.736 56	-0.031 214 4	0.002 404 01	17
24	6.474 78	-0.735 873	-0.029 792 2	0.001 993 5	18
25	6.469 25	-0.719 463	-0.057 522 9	0.002 274 41	19
26	6.482 78	-0.737 63	0.011 160 2	0.002 268 78	20
27	6.484 07	-0.738 088	0.017 744 6	0.001 824 01	21
28	6.472 43	-0.711 885	-0.041 291 5	0.003 400 45	22
29	6.486 3	-0.741 487	0.029 263 1	0.001 860 17	23
30	6.487 7	-0.742 825	0.036 474 7	0.001 974 35	24
31	6.490 97	-0.748 52	0.053 2368	0.002 081 22	25
32	6.490 57	-0.747 702	0.051 166 3	0.002 027 93	26
33	6.490 03	-0.744 915	0.048 383 2	0.002 216 67	27
34	6.500 72	-0.768 757	0.103 764	0.001 368 95	28
35	6.504 38	-0.776 808	0.122 783	0.001 308 63	29
36	6.507 36	-0.785 491	0.138 256	0.001 389 13	30
37	6.506 71	-0.772 15	0.134 883	0.001 380 15	31
38	6.512 4	-0.782 744	0.164 503	0.001 268 81	32
39	6.513 76	-0.787 241	0.171 573	0.001 325 23	33
40	6.504 86	-0.762 179	0.125 181	0.002 187 49	34
41	6.505 39	-0.759 946	0.127 924	0.001 697 37	35
42	6.505 04	-0.757 196	0.126 064	0.001 583 03	36
43	6.507 52	-0.760 027	0.138 928	0.002 264 06	37
44	6.514 38	-0.776 703	0.174 761	0.001 629 64	38
45	6.504 88	-0.752 886	0.125 121	0.001 979 86	39
46	6.503 04	-0.747 093	0.115 494	0.002 291 63	40
47	6.504 76	-0.751 279	0.124 464	0.002 197 38	41
48	6.504 24	-0.749 598	0.121 831	0.001 908 6	42
49	6.504 38	-0.750 678	0.122 555	0.001 837 16	43
50	6.490 99	-0.723 657	0.053 143 6	0.002 185 11	44
51	6.507 76	-0.761 24	0.140 307	0.001 499 76	45
52	6.492 39	-0.725 181	0.060 291 2	0.002 622 43	46
53	6.492 76	-0.726 893	0.062 226 6	0.002 518 55	47
54	6.491 92	-0.724 438	0.057 869 9	0.002 717 98	48
55	6.489 76	-0.720 2	0.046 799	0.002 548 64	49
56	6.499 96	-0.743 561	0.099 677	0.001 707 75	50

Table 1(b):results for ECR equations of curves node num 7-56

3.2 Graphical Plots for Results Obtained.

This analysis is performed in gnuplot in Linux.

1. Node Number 7

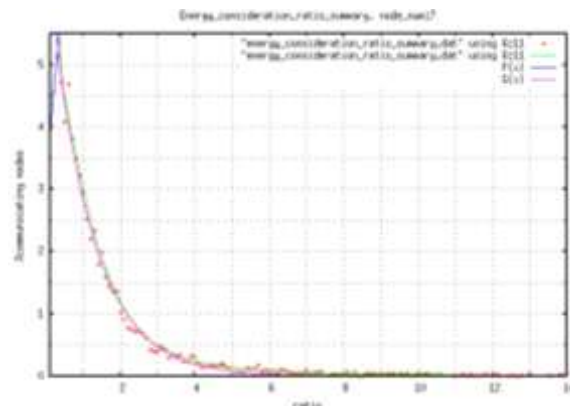


Figure 1: PCN\_ECR\_NN 7

2. Node Number 8

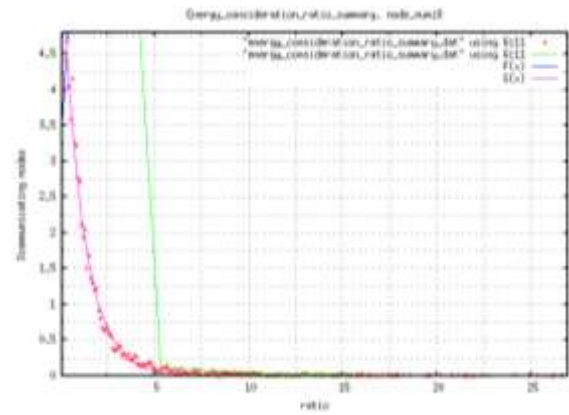


Figure 2: PCN\_ECR\_NN 8

3. Node Number 9

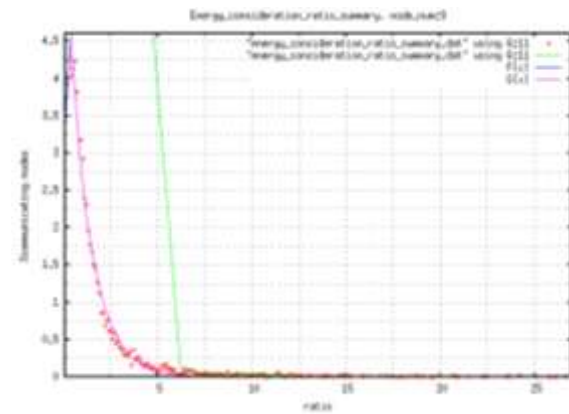


Figure 3: PCN\_ECR\_NN 9

4. Node Number 10

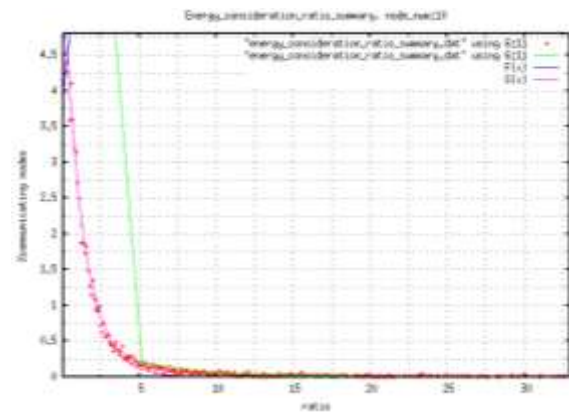


Figure 4: PCN\_ECR\_NN 10

5. Node Number 11

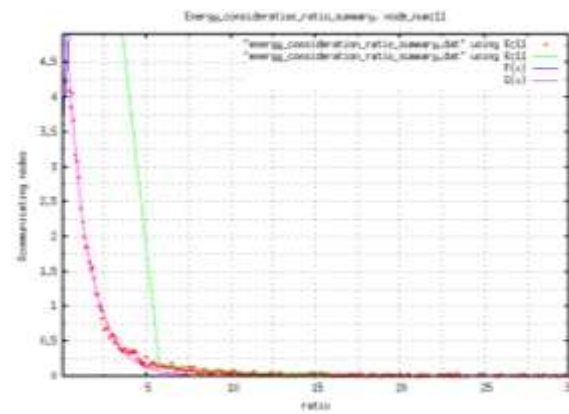
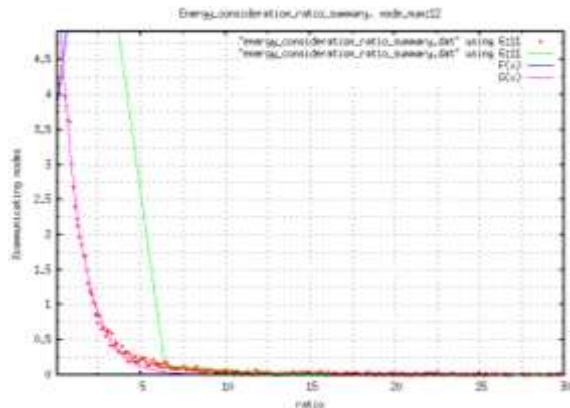


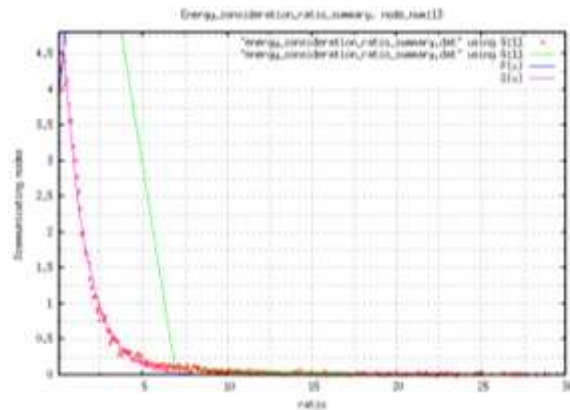
Figure 5: PCN\_ECR\_NN 11

6. Node Number 12



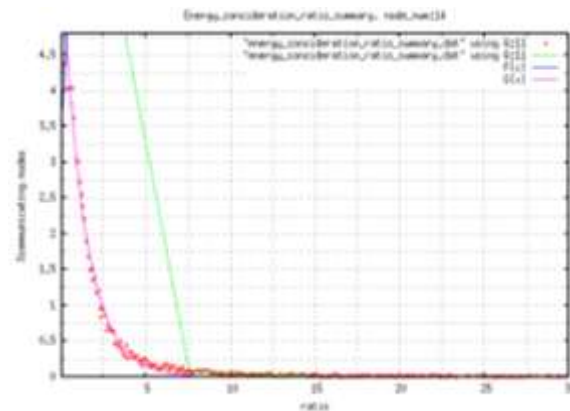
**Figure 6: PCN\_ECR\_NN 12**

7. Node Number 13



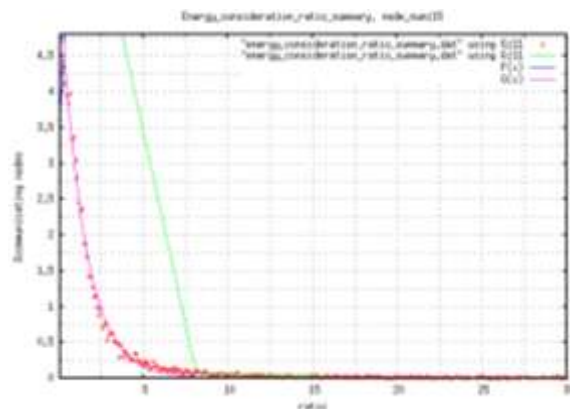
**Figure 7: PCN\_ECR\_NN 13**

8. Node Number 14



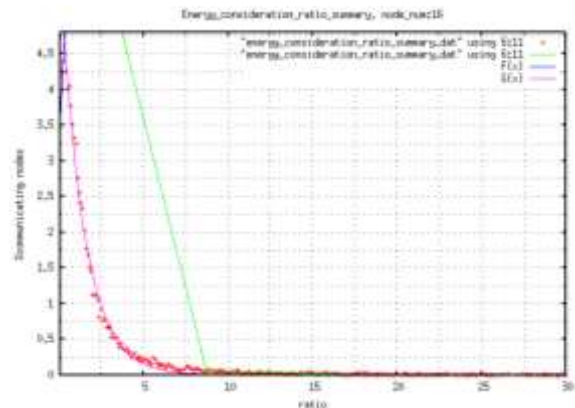
**Figure 8: PCN\_ECR\_NN 14**

9. Node Number 15



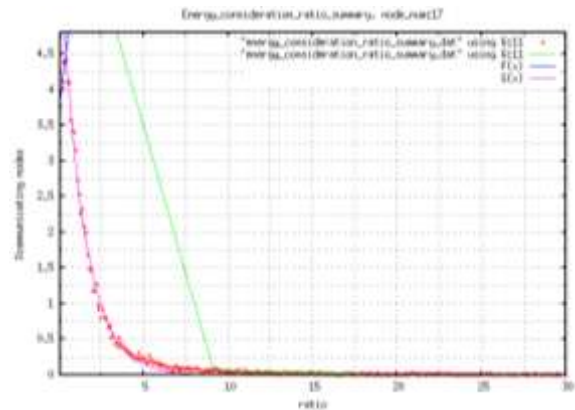
**Figure 9: PCN\_ECR\_NN 15**

10. Node Number 16



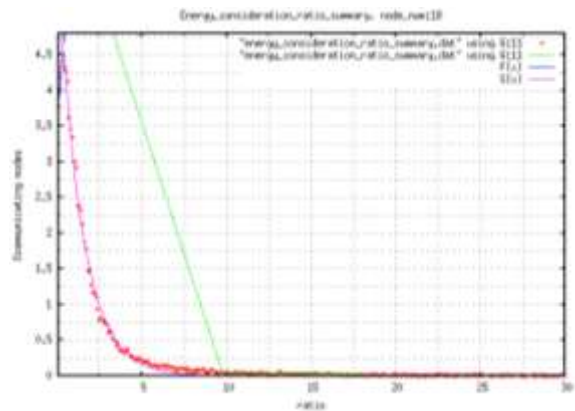
**Figure 10: PCN\_ECR\_NN 16**

11. Node Number 17



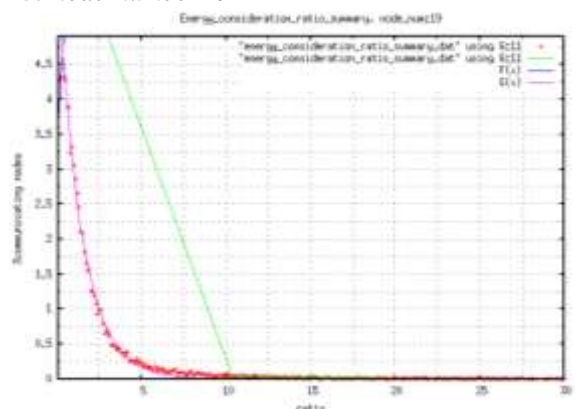
**Figure 11: PCN\_ECR\_NN 17**

12. Node Number 18



**Figure 12: PCN\_ECR\_NN 18**

13. Node Number 19



**Figure 13: PCN\_ECR\_NN 19**

14. Node Number 20

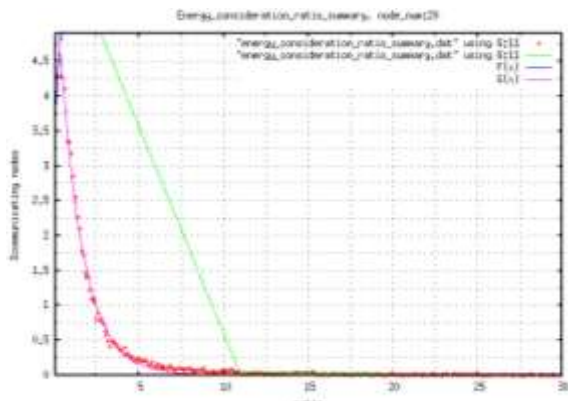


Figure 14: PCN\_ECR\_NN 20

15. Node Number 21

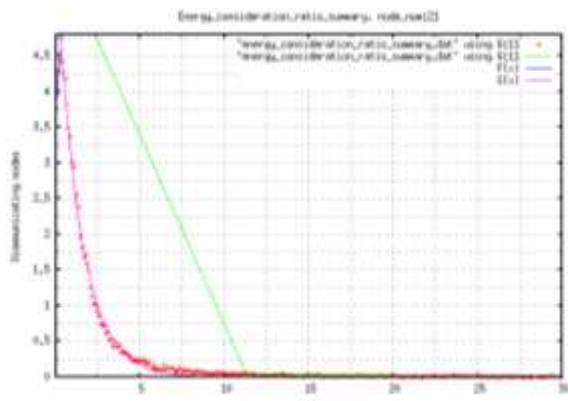


Figure 15: PCN\_ECR\_NN 21

16. Node Number 22

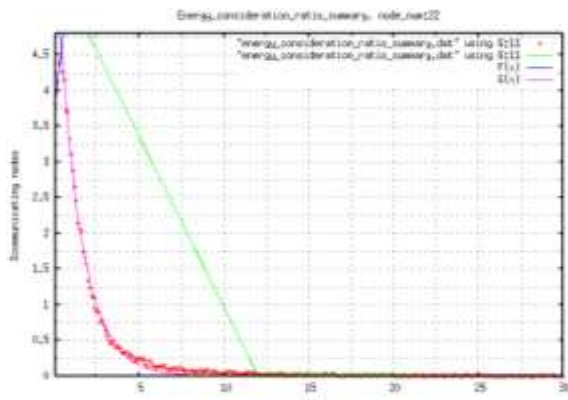


Figure 16: PCN\_ECR\_NN 22

17. Node Number 23

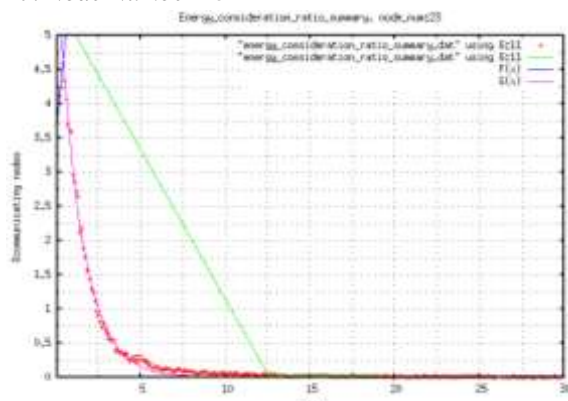


Figure 17: PCN\_ECR\_NN 23

18. Node Number 24

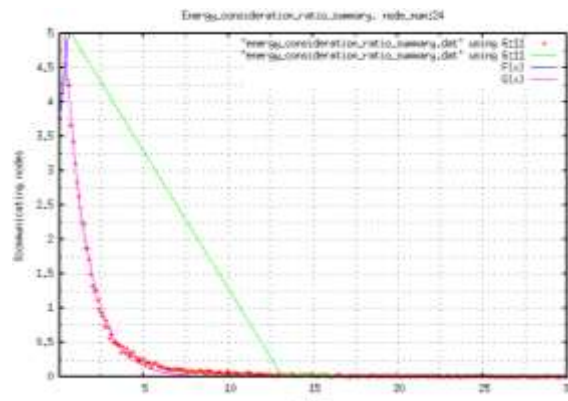


Figure 18: PCN\_ECR\_NN 24

19. Node Number 25

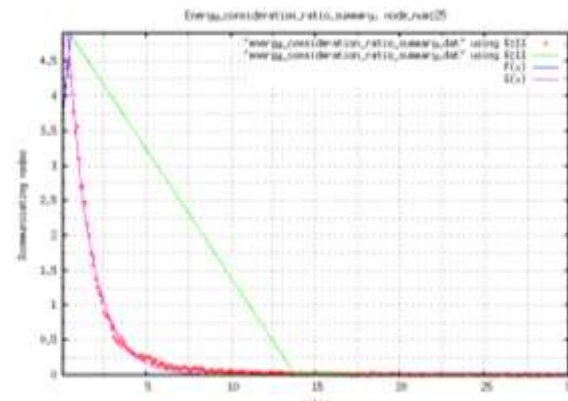


Figure 19: PCN\_ECR\_NN 25

20. Node Number 26

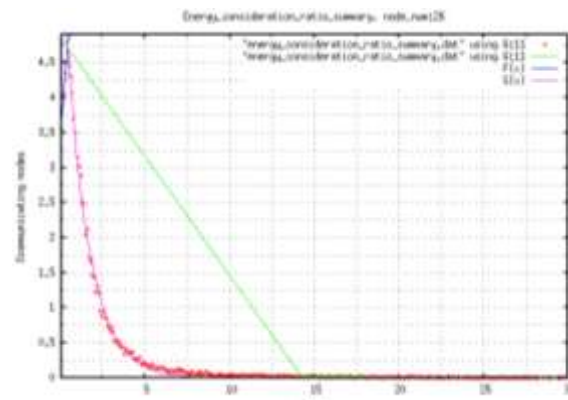


Figure 20: PCN\_ECR\_NN 26

21. Node Number 27

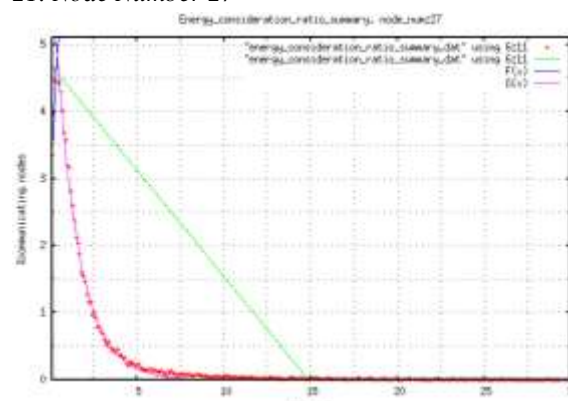


Figure 21: PCN\_ECR\_NN 27

22. Node Number 28

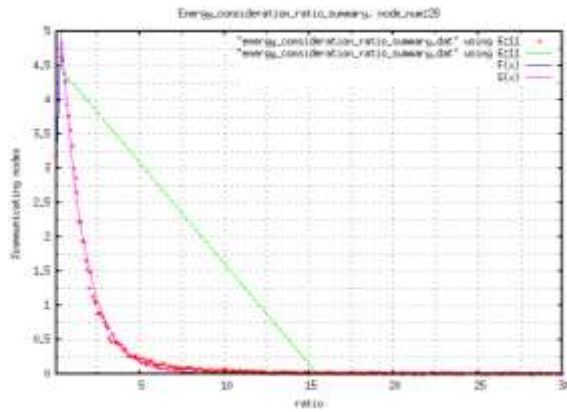


Figure 22: PCN\_ECR\_NN 28

23. Node Number 29

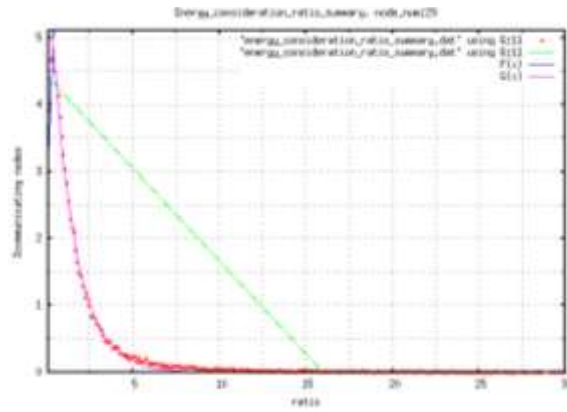


Figure 23: PCN\_ECR\_NN 29

24. Node Number 30

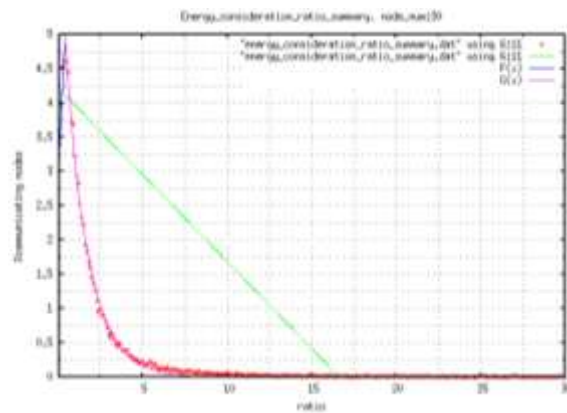


Figure 24: PCN\_ECR\_NN 30

25. Node Number 31

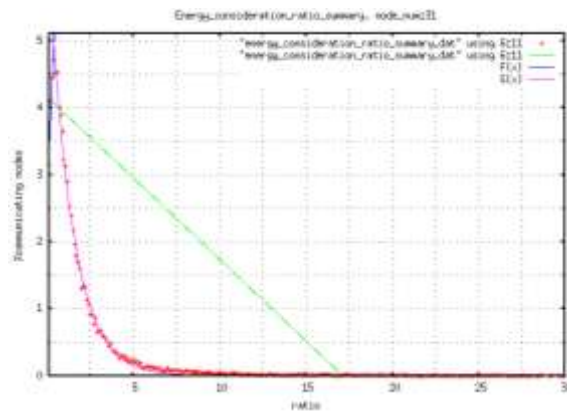


Figure 25: PCN\_ECR\_NN 31

26. Node Number 32

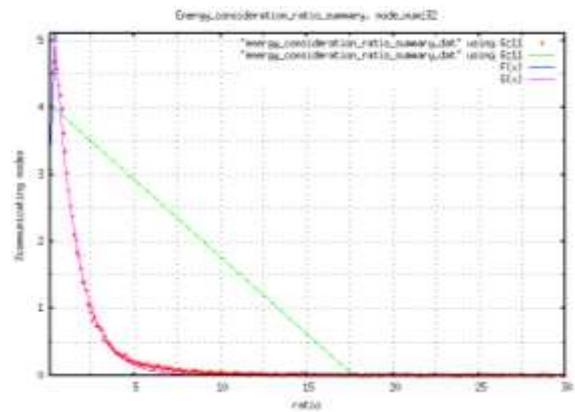


Figure 26: PCN\_ECR\_NN 32

27. Node Number 33

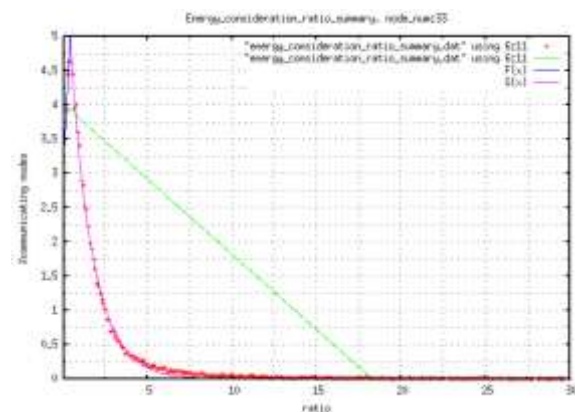


Figure 27: PCN\_ECR\_NN 33

28. Node Number 34

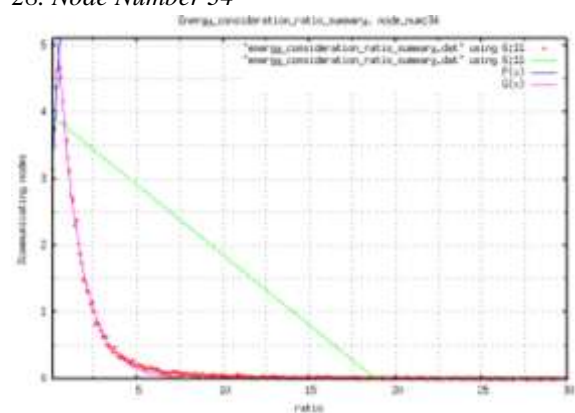


Figure 28: PCN\_ECR\_NN 34

29. Node Number 35

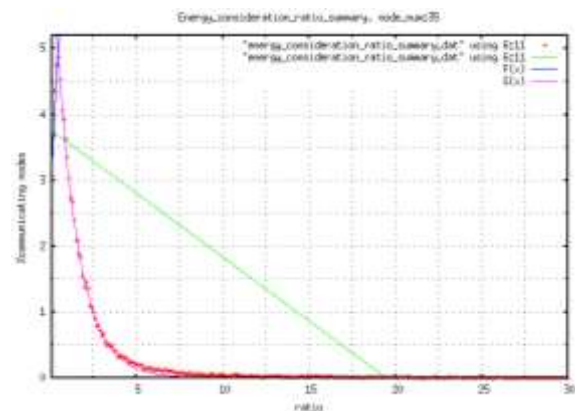
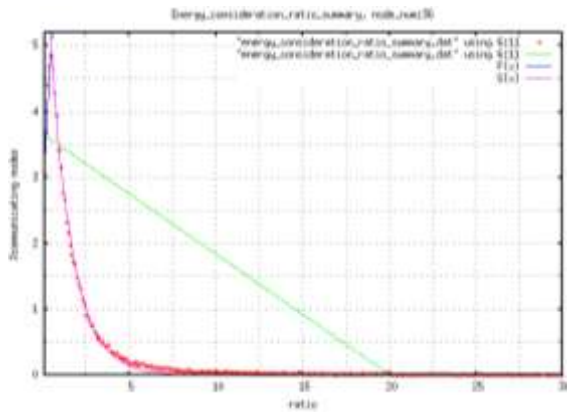


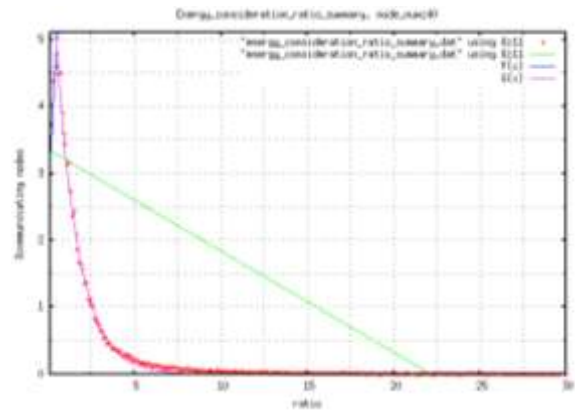
Figure 29: PCN\_ECR\_NN 35

30. Node Number 36



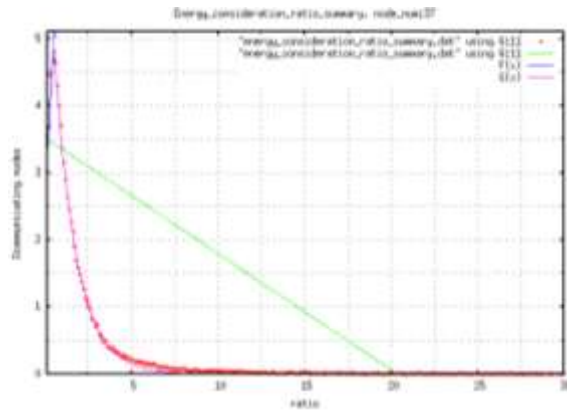
**Figure 30: PCN\_ECR\_NN 36**

31. Node Number 37



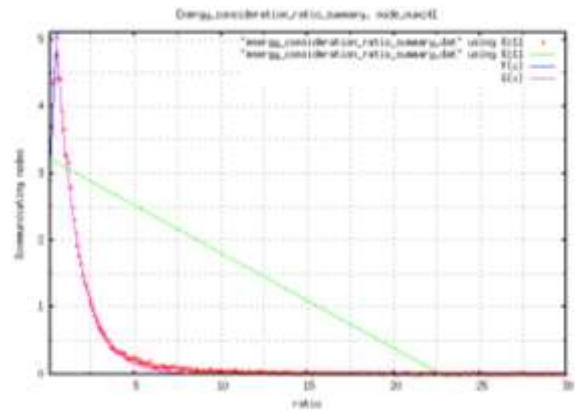
**Figure 34: PCN\_ECR\_NN 40**

35. Node Number 41



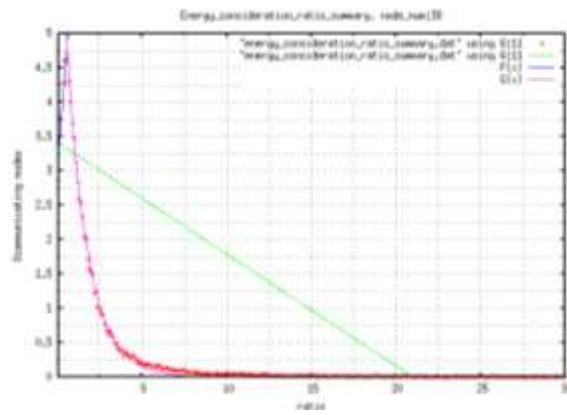
**Figure 31: PCN\_ECR\_NN 37**

32. Node Number 38



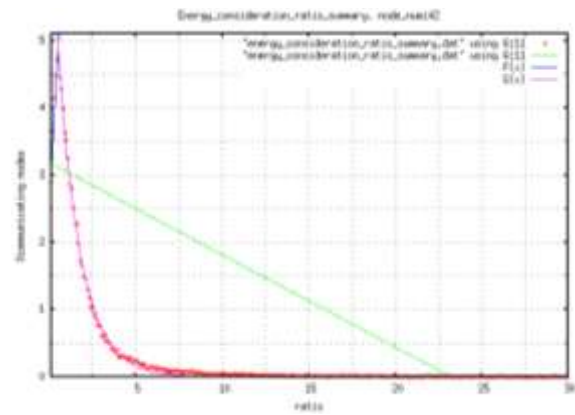
**Figure 35: PCN\_ECR\_NN 41**

36. Node Number 42



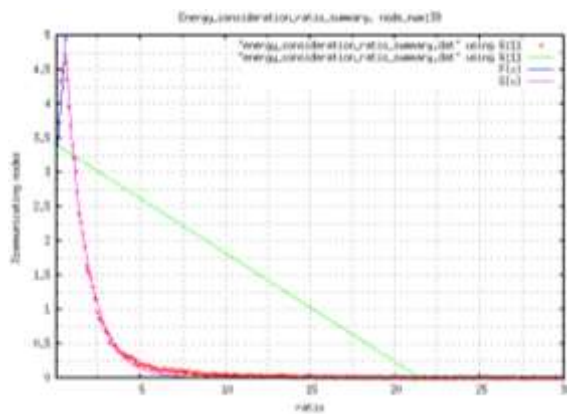
**Figure 32: PCN\_ECR\_NN 38**

33. Node Number 39



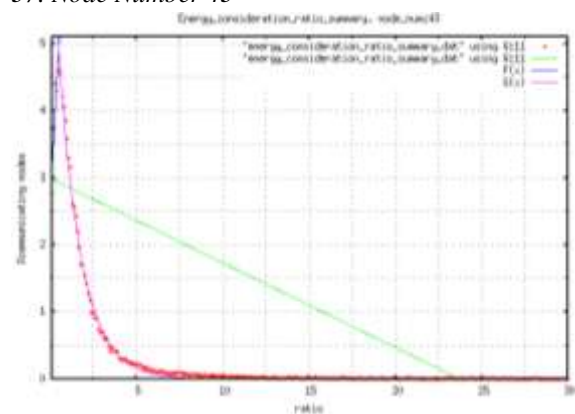
**Figure 36: PCN\_ECR\_NN 42**

37. Node Number 43



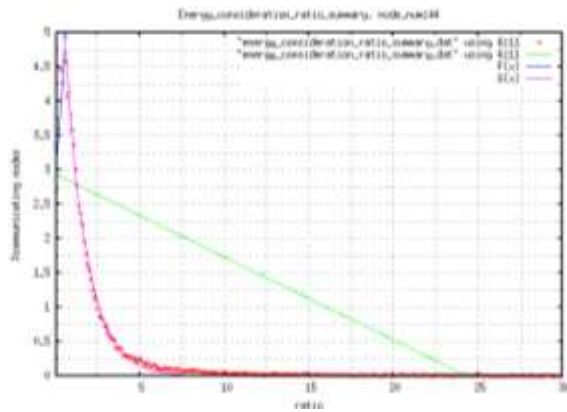
**Figure 33: PCN\_ECR\_NN 39**

34. Node Number 40



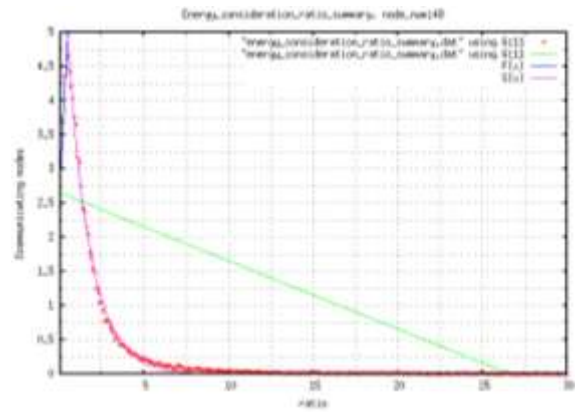
**Figure 37: PCN\_ECR\_NN 43**

38. Node Number 44



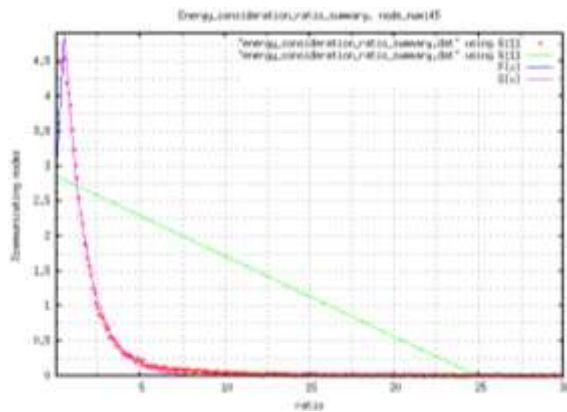
**Figure 38: PCN\_ECR\_NN 44**

39. Node Number 45



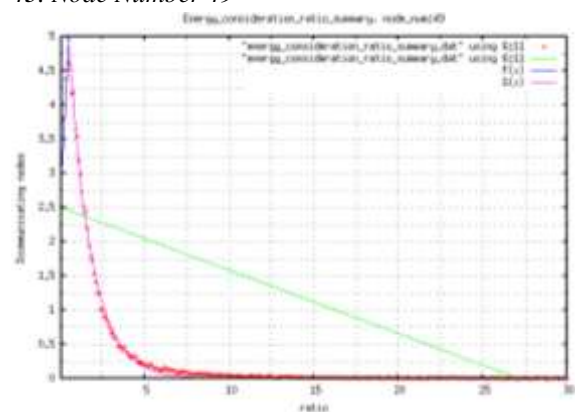
**Figure 42: PCN\_ECR\_NN 48**

43. Node Number 49



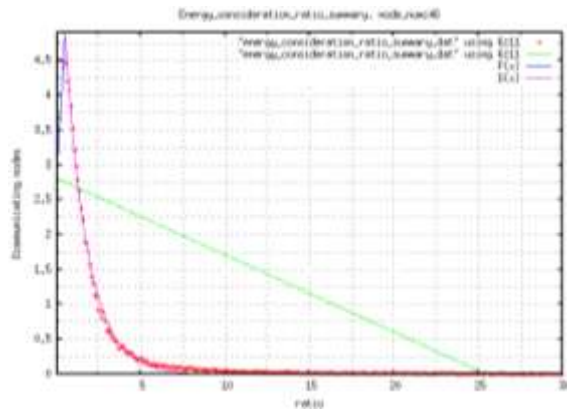
**Figure 39: PCN\_ECR\_NN 45**

40. Node Number 46



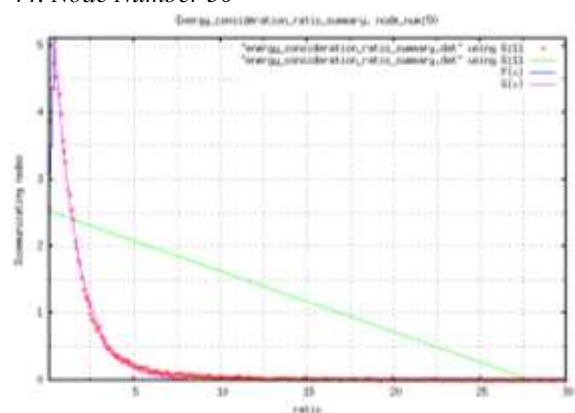
**Figure 43: PCN\_ECR\_NN 49**

44. Node Number 50



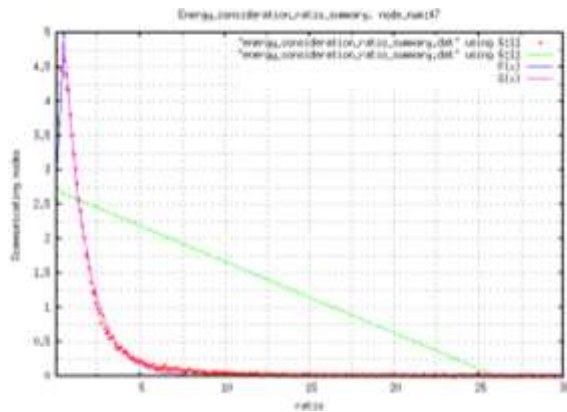
**Figure 40: PCN\_ECR\_NN 46**

41. Node Number 47



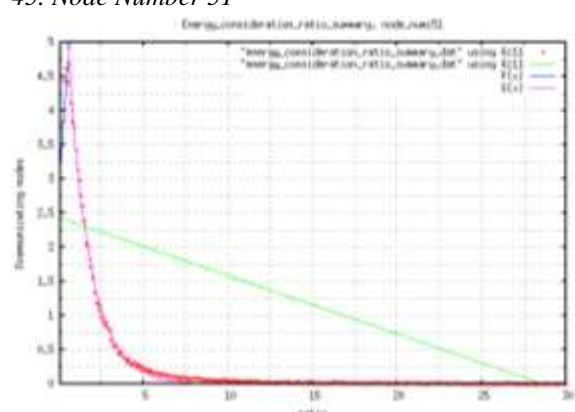
**Figure 44: PCN\_ECR\_NN 50**

45. Node Number 51



**Figure 41: PCN\_ECR\_NN 47**

42. Node Number 48



**Figure 45: PCN\_ECR\_NN 51**

46. Node Number 52



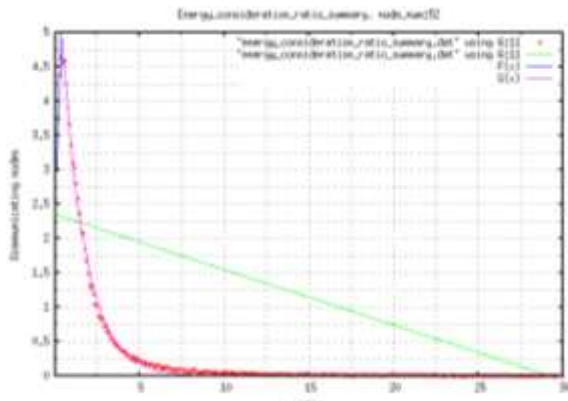


Figure 46: PCN\_ECR\_NN 52

47. Node Number 53

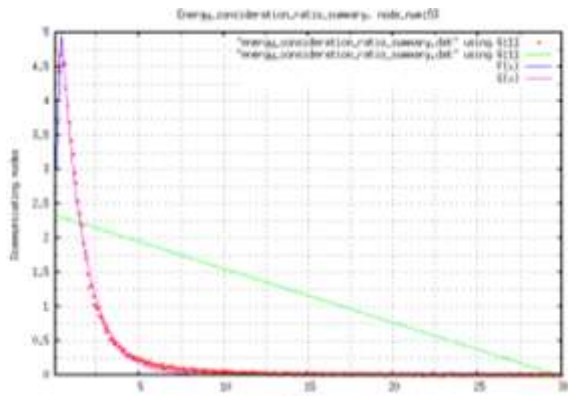


Figure 47: PCN\_ECR\_NN 53

48. Node Number 54

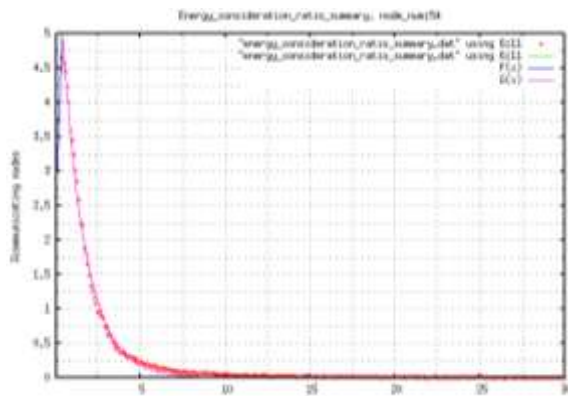


Figure 48: PCN\_ECR\_NN 54

49. Node Number 55

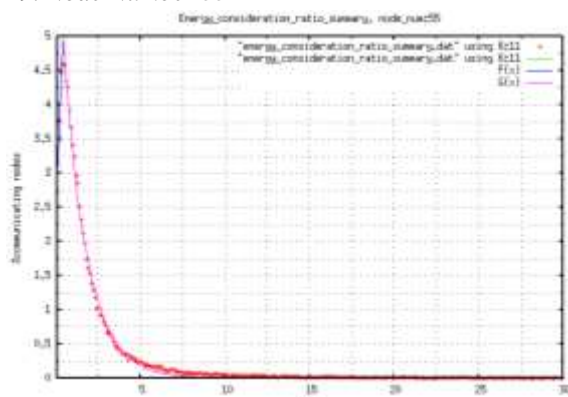


Figure 49: PCN\_ECR\_NN 55

50. Node Number 56

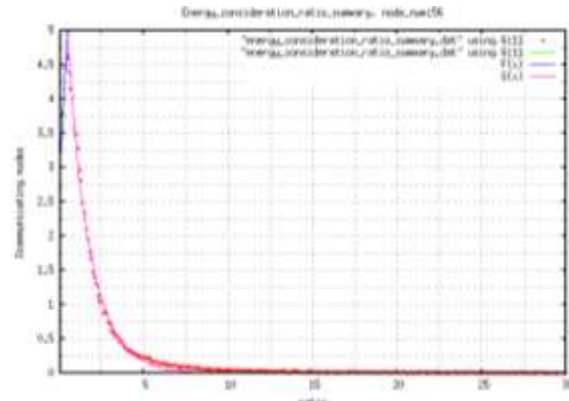


Figure 50: PCN\_ECR\_NN 56

## 4. Conclusion.

This piece of research was aimed at studying a resulting situation of transmission over MANET topography of 300 x 300 m<sup>2</sup>. For this purpose, one metric was devised: ECR and corresponding model of trend over varying number of node densities have been put forward. The purposes that this metric and its trend analysis will serve have also been put forward. This research remains empirical based and was implemented over same components as explained in another paper [15]. The model put forward comprises of 2 equations  $F(x)$  and  $G(x)$  which applies with respect to a peak value. Here also, many components are assumed as available even if they remain subjects of research, e.g. lightweight algorithms for location-aware transmission in mobile environments, lightweight MAUC OS support for efficient and very rapid binding/unbinding of MANET nodes and appropriate multi-threading communication module in MANET nodes.

The further works identified may include: trend analyses of parameters of equation for the model, formulating method of predictability for metric ECR and its trend and reporting observations of certain values identified. Other research questions also crop up, e.g. “Is the CBR transmission achieving overall fairness towards sender node? Or, are the MANET nodes spending much more energy than proportionately to the sender?” Further probing remains desirable.

## References

- [1] M. Kaleem GALAMALI, Assoc. Prof Nawaz MOHAMUDALLY, Towards Dependable Pervasive Systems-A Position and Vision Paper, CEET 2014
- [2] M. Kaleem GALAMALI, Assoc. Prof Nawaz MOHAMUDALLY, Model of Energy Savings achievable with Location-aware Node-to-Node Transmission in UbiComp , CEET 2014
- [3] M. Kaleem GALAMALI, Assoc. Prof Nawaz MOHAMUDALLY, Model of Energy Savings achievable with Location-aware Node-to-Node Transmission in UbiComp Using Location Refresh Intervals, CEET 2014

- [4] M. Kaleem GALAMALI, Assoc. Prof Nawaz MOHAMUDALLY, Model of Energy Savings achievable with Location-aware Transmission in UbiComp Using Relays, CEET 2014
- [5] M. Kaleem GALAMALI, Assoc. Prof Nawaz MOHAMUDALLY, Mathematical modeling of need of exact number of relays to ensure seamless mobility in mobile computing, CEET 2014
- [6] M. Kaleem GALAMALI, Assoc. Prof Nawaz MOHAMUDALLY, Modelling of need for multiple relays for ensuring seamless mobility, CEET 2014
- [7] M. Kaleem GALAMALI, Assoc. Prof Nawaz MOHAMUDALLY, Investigation of prominence of placements of relays in a ubicomp topography,
- [8] M. Kaleem GALAMALI, Assoc. Prof Nawaz MOHAMUDALLY, Model of energy savings achievable with location-aware transmission in ubicomp using optimised number of relays.
- [9] M. Kaleem GALAMALI, Assoc. Prof Nawaz MOHAMUDALLY, Investigation of Prominence of Placements of Optimised Number of Relays in a Ubicomp Topography using Location-Aware Transmission, CEET 2015.
- [10] M. Kaleem GALAMALI, Assoc. Prof Nawaz MOHAMUDALLY, Extending Node Battery Availability in Ubicomp with Location-Aware Transmission, CEET 2015.
- [11] M. Kaleem GALAMALI, Assoc. Prof Nawaz MOHAMUDALLY, Extending Node Battery Availability in Ubicomp with Location-Aware Transmission using Location Refresh Intervals, CEET 2015.
- [12] M. Kaleem GALAMALI, Assoc. Prof Nawaz MOHAMUDALLY, Extending Node Battery Availability in Ubicomp with Location-Aware Transmission using Uniformly Placed Relays, CEET 2015.
- [13] M. Kaleem GALAMALI, Assoc. Prof Nawaz MOHAMUDALLY, Extending Node Battery Availability in Ubicomp with Location-Aware Transmission Using Optimally Placed Relays, CEET 2015.
- [14] M. Kaleem GALAMALI, Assoc. Prof Nawaz MOHAMUDALLY, Model of Sender Node Energy Savings Achievable with Location-Aware MANET Transmission in Ubicomp, ACCN 2016
- [15] M. Kaleem GALAMALI, Assoc. Prof Nawaz MOHAMUDALLY, Model of Overall Node Energy Savings Achievable with Location-Aware MANET Transmission in Ubicomp, ACCN 2016
- [16] M. Kaleem GALAMALI, Assoc. Prof Nawaz MOHAMUDALLY, Model of Sender Node Extra Energy Savings Achievable in MANET Against Direct Node-to-Node Transmission Using Location-Aware Transmission in Ubicomp, ACCN 2016
- [17] M. Kaleem GALAMALI, Assoc. Prof Nawaz MOHAMUDALLY, Model of Overall Node Extra Energy Savings Achievable in MANET against Direct Node-to-Node Transmission Using Location-Aware Transmission in Ubicomp, ACCN 2016
- [18] Markus Bylund and Zary Segall, Towards seamless mobility with personal servers, 2004.
- [19] Masugi Inoue, Mikio Hasegawa, Nobuo Ryoki and Hiroyuki Morikawa, Context-Based Seamless Network and Application Control, 2004
- [20] Xiang Song, Umakishore Ramachandran, MobiGo: A Middleware for Seamless Mobility, College of Computing Georgia Institute of Technology, Atlanta, GA, USA, August 2007
- [21] Budzisz, Ferrús, R., Brunstrom A., Grinnemo, K, Fracchia, R., Galante, G., and Casadevall, F. Towards transport-layer mobility: Evolution of SCTP multihoming, March 2008
- [22] Paul Dourish & Genevieve Bell, Divining a digital future, 2011.
- [23] Xiang Song, Seamless Mobility In Ubiquitous Computing Environments, PhD Thesis, Georgia Institute of Technology, August 2008
- [24] Kevin O Mahony, Jian Liang, Kieran Delaney, User-Centric Personalization and Autonomous Reconfiguration Across Ubiquitous Computing Environments, NIMBUS Centre Cork Institute of Technology, Cork, Ireland, UBICOMM 2012
- [25] Pablo Vidales, Seamless mobility in 4G systems, *Technical Report, University of Cambridge*, Computer Laboratory, Number 656, November 2005
- [26] João Pedro Sousa and David Garlan, Aura: An Architectural Framework for User Mobility in Ubiquitous Computing Environments, School of Computer Science, Carnegie Mellon University, USA, August 2002
- [27] Dennis Lupiana, Ciaran O'Driscoll, Fredrick Mtenzi, Defining Smart Space in the Context of Ubiquitous Computing, Dublin Institute of Technology, Ireland, Special Issue on ICIT 2009 Conference - Web and Agent Systems, 2009
- [28] N.S.V.Shet1, Prof.K.Chandrasekaran2 and Prof. K.C.Shet3, *WAP Based Seamless Roaming In Urban Environment with Wise Handoff Technique*, International Journal of UbiComp (IJU), Vol.1, No.4, October 2010
- [29] Yipeng Yu Dan He Weidong Hua Shijian Li Yu Qi Yueming Wang Gang Pan, FlyingBuddy2: A Brain-controlled Assistant for the Handicapped, Zhejiang University, *UbiComp '12*, September 5-8, 2012.
- [30] Jing Su, James Scott, Pan Hui, Jon Crowcroft, Eyal de Lara Christophe Diot, Ashvin Goel, Meng How Lim, and Eben Upton, *Haggle: Seamless Networking for Mobile Applications*, 2007
- [31] Rui Han, Moustafa M. Ghanem, Li Guo, Yike Guo\*, Michelle Osmond, Enabling cost-aware and adaptive elasticity of multi-tier cloud applications, *Future Generation Computer Systems*, 2012
- [32] Byrav Ramamurthy, K. K. Ramakrishnan , Rakesh K. Sinha, Cost and Reliability Considerations in Designing the Next-Generation IP over WDM Backbone Networks, 2012.
- [33] Bhavish Aggarwal, Aditya Akella, Ashok Anand, Athula Balachandran, Pushkar Chitnis, Chitra Muthukrishnan, Ram Ramjee and George Varghese, EndRE: An End-System Redundancy Elimination Service for Enterprises, NSDI 2010, San Jose, CA
- [34] Ashok Anand, Vyas Sekar and Aditya Akella, SmartRE: An Architecture for Coordinated Network-wide Redundancy Elimination, SIGCOMM 2009, Barcelona, Spain
- [35] John Breeden II, "Smart-phone battery life could double – without better batteries", Nov 14, 2012
- [36] Andy Boxall, "When will your phone battery last as long as your kindle", December 5, 2012.
- [37] Imielinski, T. and Navas, J.C. (1999). GPS-based geographic addressing, routing, and resource discovery. *Comms. ACM*, Vol. 42, No. 4, pp. 86-92.
- [38] Hightower, J. and Borriello, G. (2001). Location Systems for Ubiquitous Computing. *IEEE Computer*, Vol. 34, No. 8, August, pp. 57-66.
- [39] Harter, A., Hopper, A., Steggle, P., Ward, A. and Webster, P. (2002). The Anatomy of a Context-Aware Application. *Wireless Networks*, Vol. 8, No. 2-3, Mar-May, pp. 187-197.
- [40] Hightower, J., Brumitt, B. and Borriello, G. (2002). The Location Stack: A Layered Model for Location in Ubiquitous Computing. *Proceedings of the 4th IEEE Workshop on Mobile Computing Systems & Applications (WMCSA 2002)*, Callicoon, NY, USA, June, pp. 22-28.
- [41] Graumann, D., Lara, W., Hightower, J. and Borriello, G. (2003). Real-world implementation of the Location Stack: The Universal Location Framework. *Proceedings of the 5th IEEE Workshop on Mobile Computing Systems & Applications (WMCSA 2003)*, Monterey, CA, USA, October, pp. 122-128.
- [42] Ko, Y., & Vaidya, N. H. (2000). Location-aided routing (LAR) in mobile ad hoc networks. *Wireless Networks*, 6(4), 307-321.
- [43] Liao, W.-H., Tseng, Y.-C., & Sheu, J.-P. (2001). GRID: a fully location-aware routing protocol for mobile ad hoc networks. *Telecommunication Systems*, 18(1), 37-60.
- [44] Kuhn, F., Wattenhofer, R., Zhang, Y., & Zollinger, A. (2003). Geometric ad-hoc routing: of theory and practice. In *Proceedings of the ACM (PODC '03)* (pp. 63-72).

- [45] Jiang, X., & Camp, T. (2002). Review of geocasting protocols for a mobile ad hoc network. In *Proceedings of the Grace Hopper Celebration (GHC)*.
- [46] Ko, Y. & Vaidya, N. H. (1999). Geocasting in mobile ad hoc networks: location-based multicast algorithms. In *Proceedings of the IEEE (WMCSA '99)* (pp. 101).
- [47] Mauve, M., Fuler, H., Widmer, J., & Lang, T. (2003). *Position-based multicast routing for mobile ad-hoc networks* (Technical Report TR-03-004). Department of Computer Science, University of Mannheim.
- [48] Xu, Y., Heidemann, J., & Estrin, D. (2001). Geography-informed energy conservation for adhoc routing. In *Proceedings of the ACM/IEEE (MOBICOM'01)* (pp. 70-84).
- [49] Hu, Y.-C., Perrig, A., & Johnson, D. (2003). Packet leashes: a defense against wormhole attacks in wireless ad hoc networks. In *Proceedings of the INFOCOM' 03* (pp. 1976-1986).
- [50] Patwari, N., Hero III, A. O., Perkins, M., Correal, N. S., & O'Dea, R. J. (2003). Relative location estimation in wireless sensor networks. *IEEE Transactions on Signal Processing*, 51(8), 2137-2148.
- [51] Baldauf, M., Dustdar, S., & Rosenberg, F. (2007). A Survey on Context Aware Systems. *International Journal of Ad Hoc and Ubiquitous Computing*, Inderscience Publishers. forthcoming. Pre-print from: <http://www.vitalab.tuwien.ac.at/~florian/papers/ijahuc2007.pdf>
- [52] Hong, D., Chiu, D.K.W., & Shen, V.Y. (2005). Requirements elicitation for the design of context-aware applications in a ubiquitous environment. In *Proceedings of ICEC'05* (pp. 590-596).
- [53] Neeraj Tantubay, Dinesh Ratan Gautam and Mukesh Kumar Dhariwal, A Review of Power Conservation in Wireless Mobile Ad hoc Network (MANET)", *International Journal of computer Science Issues*, Vol 8, Issue 4, No 1, July 2011.

About Author (s):

Associate Professor Nawaz Mohamudally works at University of Technology, Mauritius (UTM) and has undertaken supervision of MPhil/PhD Students for many years.



M. Kaleem Galamali is a part-time student (achieved M Phil Transfer on 28.10.2014, currently PhD student) at UTM under supervision of A.P. Nawaz Mohamudally.