

Model of Overall Node Extra Energy Savings Achievable in MANET against Direct Node-to-Node Transmission Using Location-Aware Transmission in UbiComp.

M. Kaleem GALAMALI, Assoc. Prof Nawaz MOHAMUDALLY

Abstract – Lots of new components to support location tracking in mobile environment are being put forward following widespread research [36-51]. Upon significant milestones being reached, subsequent novel functionalities are being devised and existing ones improved. However, still lacking in the field of MAUC is the software engineering approaches into metrics and models development to enable predictability bounding and governing future investments of resources for development and further research [2]. One particular sub-area within the area of energy considerations in ubiComp is modelling of overall node energy savings using location-aware MANET transmission provided in another paper [15]. The next set of investigation involves quantifying and modelling the extra overall nodes energy savings achievable against Direct node-to-node transmission, the pattern of trend for this extra saving under different sets of node densities and method of predicting the trend equations and using them for predictive probability calculations.

The area of modelling in ubiComp will involve lots of work and investments and this paper does add a building block for designers to formulate better ubiComp architectures and components. This paper follows from previous work [1-16] with more emphasis from papers [2, 15].

Key terms: UbiComp- Ubiquitous Computing, MAUC- Mobile and Ubiquitous Computing, OLNTNES- Overall Less Node-to-Node Energy Savings, MANET- Mobile Adhoc Network, CBR- Constant Bit Rate, BRE- Basic Reference Energy.

M. Kaleem GALAMALI,
University of Technology Mauritius (student)
Mauritius

Assoc. Prof Nawaz Mohamudally
University of Technology Mauritius,
Mauritius

1. Introduction

Several factors affect energy consumption in MAUC [2]. A major factor remains the square of distance over which transmission occurs. Additional factors may include types of transmission, whereby 2 types are of concern here: direct node-to-node transmission [2] and MANET transmission at different node densities [15].

Researchers claim that use of MANETs help in saving energy [52]. When using MANETs, sender nodes together with those nodes forming part of MANET routes, are spending energy. These relay nodes could also be belonging to other users instead of being supplied as infrastructure nodes. A plausible model of energy savings achieved in MANET, considering total expenditure of energy by sender and MANET route nodes, is provided in paper [15]. Already in paper [15], it was mentioned that the mean energy savings was below 0. It is expected therefore that the difference between overall nodes energy savings achieved in MANETs and those achieved in direct node-to-node transmission will be even more significantly below 0.

It is hence expected that direct node-to-node energy transmission is more economic in terms of energy savings. It remains a desirable knowledge: “what is the extent of the difference in energy savings stated in last part of above paragraph? What are its corresponding trends observable at different node densities?” This study derived from 2 previous studies [2, 15] and results presented here remain empirical based.

The key contributions of this paper is firstly, the development of a new metric OLNTNES (derived from other metrics), including its definition and rationale, and secondly, the model of trend put forward for the metric OLNTNES with results for varying node densities from 7 until 56. The model suggested in this paper is the normal distribution model (with some negative skewness). The rest of this paper is organised as follows: section 2- New Derived Metric- Overall Less Node-to-Node Energy Savings, section 3- OLNTNES Trend Assessment over Varying Node Numbers, 4- Conclusion and References.

2. New Derived Metric: Overall Less Node-to-Node Energy Savings (OLNTNES).

As stated in previous research [14], the term BRE is used here also. BRE is the amount of energy spent by a sender in direct node-to-node transmission if all CBR packets were transmitted at maximum distance noted between sender and receiver.

OLNTNES is hence defined as the percentage savings achieved by the overall nodes involved for a CBR transmission in MANET (gauged against BRE) less the percentage savings achieved by sender node in Direct node-to-node transmission (also gauged against BRE).

Quite a lot of OLNTNES values below 0 is expected.

3. OLNTNES Trend Assessment over Varying Node Numbers.

3.0 Major Observations.

The trends for OLNTNES achieved for node numbers 7-56 tend to follow a normal distribution of the form:

$$F(x) = b * (1 / (a * \sqrt{2 * \pi})) * \exp(-(x-c) * (x-c) / 2 * a * a)$$

It can be read as “a factor ‘b’ times the equation of a normal curve. The smallest energy savings reached (negative values) have depicted decreasing trend with increasing node number.

Very small percentage CBR have OLNTNES value 0, i.e. have achieved same energy expenditure in MANET as in direct node-to-node transmission.

The percentage CBR having value below 0 was already high for node number 7 and shows increasing tendency with increasing node number. Correspondingly, the % CBR showing positive value here decreases with increasing node number. The mean value, which is at -7 for node number 7, depicts decreasing trend with increasing node numbers.

3.1 Tabular Summary of Results.

A tabular summary for results of equations of curves (F(x)) observed here is shown below. Column headings are: A→node number, B→Value of parameter a, C→Value of parameter b, D→Value of parameter c (the mean), E→reduced Chi-square value of plot, F→Corresponding figure number.

A	B	C	D	E	F
7	0.071 209 2	0.435 729	-7	0.102 964	1
8	0.071 343 3	0.437 047	-7	0.101 148	2
9	0.065 507 7	0.368 692	-9	0.112 8	3
10	0.064 731 7	0.348 212	-10	0.059 930 1	4
11	0.063 489 3	0.331 489	-10	0.053 965 6	5
12	0.059 992 7	0.301 122	-12	0.052 719 9	6
13	0.059 736 6	0.295 855	-12	0.055 874	7
14	0.055 592 6	0.260 328	-14	0.062 126 8	8
15	0.055 465 7	0.255 699	-14	0.053 855 1	9
16	0.054 287 6	0.248 446	-15	0.067 927 3	10
17	0.055 667 2	0.254 03	-16	0.056 855 2	11
18	0.056 971 9	0.264 25	-16	0.047 604 8	12
19	0.055 576 1	0.252 467	-17	0.049 043 7	13
20	0.054 429 6	0.243 911	-18	0.048 237 9	14
21	0.055 772 7	0.259 409	-17	0.059 276	15
22	0.054 540 8	0.248 143	-19	0.050 229 5	16
23	0.053 286 3	0.237 398	-19	0.055 841 4	17
24	0.051 983 3	0.229 54	-20	0.043 503 8	18
25	0.052 599 1	0.232 166	-20	0.045 746	19
26	0.051 355 7	0.221 415	-20	0.051 915 9	20

27	0.053 130 97	0.231 994	-20	0.040 897 9	21
28	0.050 915 8	0.215 372	-21	0.037 427 3	22
29	0.051 281	0.217 703	-21	0.042 088 4	23
30	0.049 395 7	0.204 274	-22	0.043 495 6	24
31	0.048 569 9	0.199 64	-21	0.047 033 8	25
32	0.048 613 8	0.199 659	-22	0.042 623 5	26
33	0.047 299 8	0.190 007	-23	0.040 657 4	27
34	0.047 804 1	0.192 238	-23	0.049 364 3	28
35	0.048 103 7	0.193 471	-23	0.037 369	29
36	0.047 057 2	0.187 237	-24	0.036 172 6	30
37	0.048 323 2	0.193 047	-24	0.045 127 2	31
38	0.049 271 5	0.199 425	-24	0.040 491 5	32
39	0.048 769 1	0.194 886	-24	0.038 985	33
40	0.049 679 8	0.200 786	-24	0.034 723 3	34
41	0.047 117 2	0.184 545	-25	0.038 851 4	35
42	0.047 855 6	0.189 481	-25	0.040 996 1	36
43	0.047 819 4	0.187 842	-25	0.041 007 8	37
44	0.047 536 5	0.185 373	-25	0.035 801 5	38
45	0.046 898	0.182 256	-25	0.036 977 2	39
46	0.047 446 3	0.184 704	-25	0.033 293 3	40
47	0.047 811 9	0.187 37	-25	0.033 338 6	41
48	0.047 080 1	0.182 709	-26	0.037 222 1	42
49	0.046 386 4	0.177 858	-26	0.036 440 6	43
50	0.048 072 6	0.189 068	-26	0.042 045 6	44
51	0.048 731 6	0.192 46	-26	0.044 323 5	45
52	0.049 061 6	0.195 127	-26	0.039 254 5	46
53	0.048 116 5	0.188 868	-26	0.040 008 6	47
54	0.049 179	0.194 367	-27	0.036 350 8	48
55	0.048 163 8	0.188 01	-27	0.033 832 8	49
56	0.048 448 4	0.190 172	-27	0.037 863 4	50

Table 1: results for OLNTNES equations of curves node num 7-56

3.2 Graphical Plots for Results Obtained.

This analysis is performed in gnuplot in Linux.

1. Node Number 7

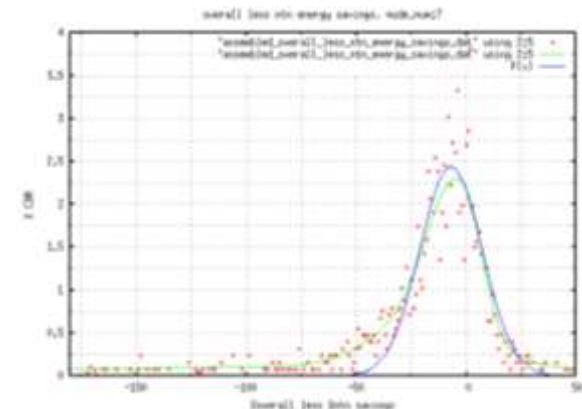


Figure 1: % cbr for OLNTNES node_number 7

2. Node Number 8

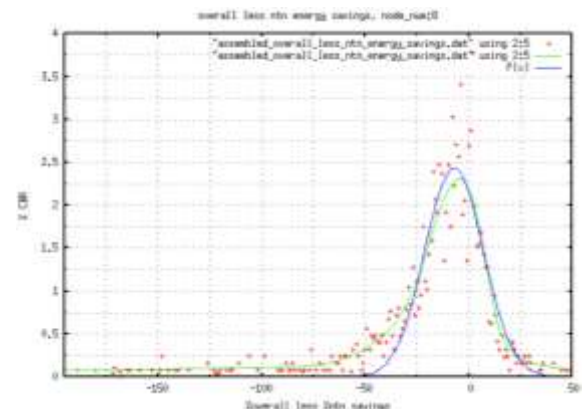


Figure 2: % cbr for OLNTNES node_number 8

3. Node Number 9

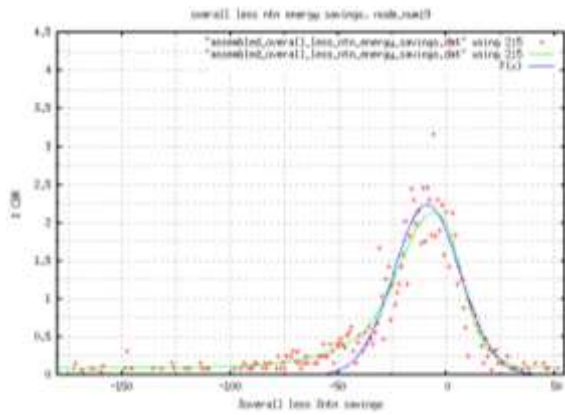


Figure 3: % cbr for OLTNES node_number 9
 4. Node Number 10

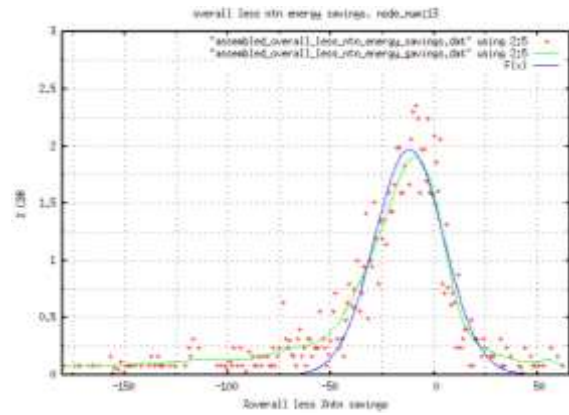


Figure 7: % cbr for OLTNES node_number 13
 8. Node Number 14

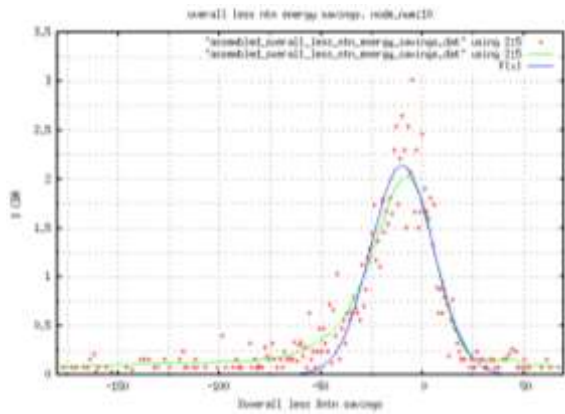


Figure 4: % cbr for OLTNES node_number 10
 5. Node Number 11

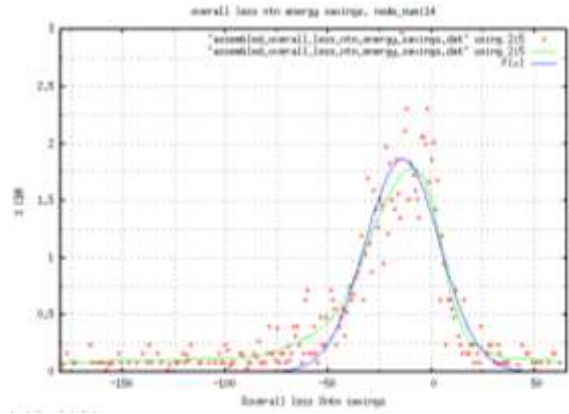


Figure 8: % cbr for OLTNES node_number 14
 9. Node Number 15

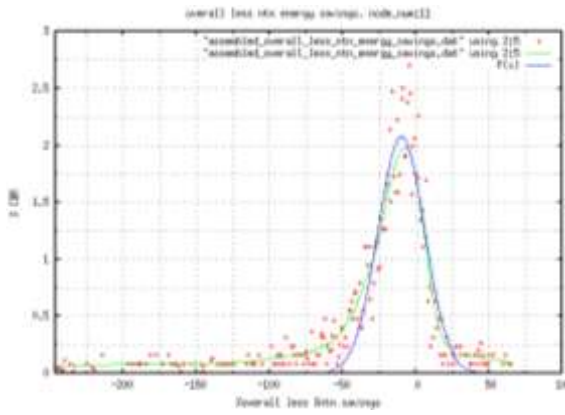


Figure 5: % cbr for OLTNES node_number 11
 6. Node Number 12

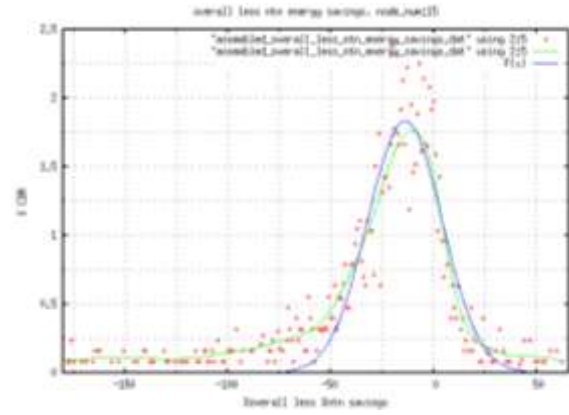


Figure 9: % cbr for OLTNES node_number 15
 10. Node Number 16

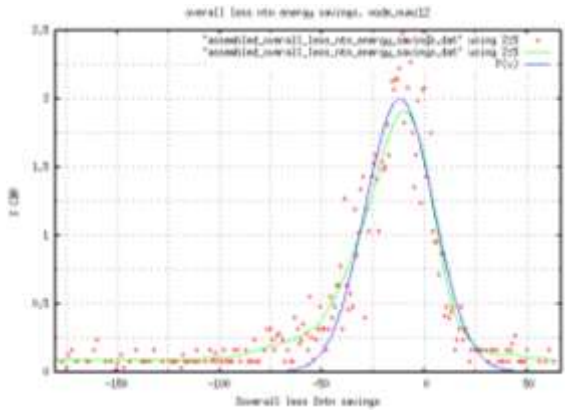


Figure 6: % cbr for OLTNES node_number 12
 7. Node Number 13

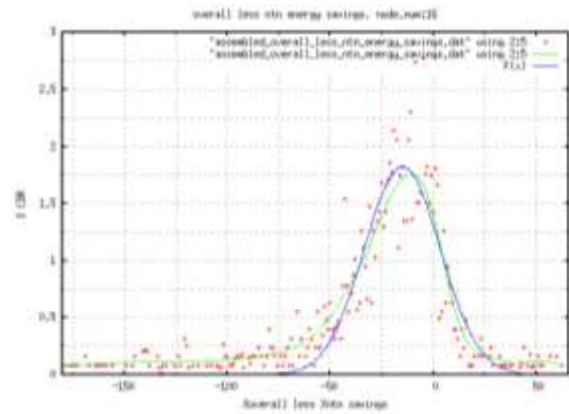


Figure 10: % cbr for OLTNES node_number 16
 11. Node Number 17

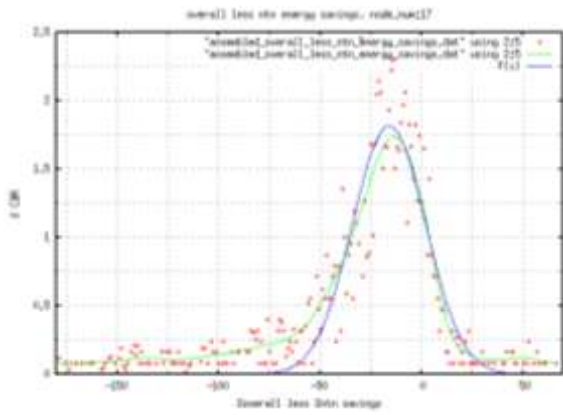


Figure 11: % cbr for OLNTNES node_number 17
 12. Node Number 18

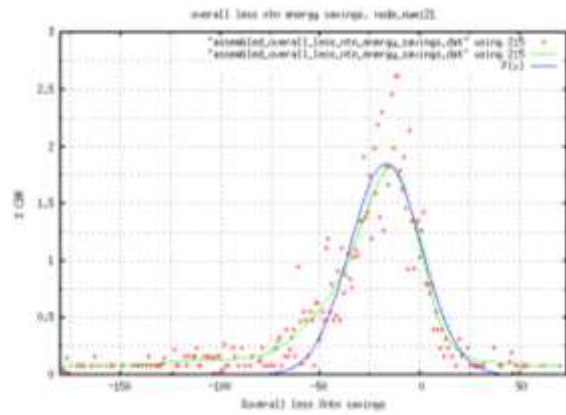


Figure 15: % cbr for OLNTNES node_number 21
 16. Node Number 22

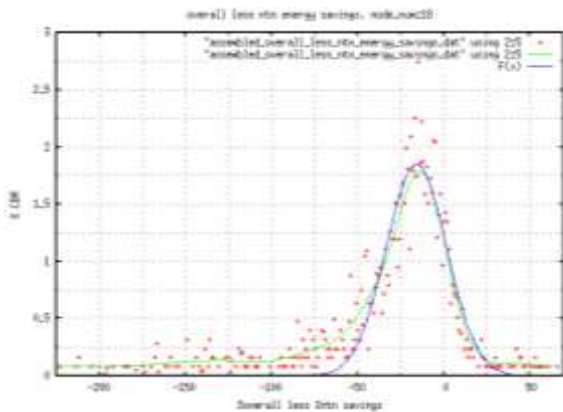


Figure 12: % cbr for OLNTNES node_number 18
 13. Node Number 19

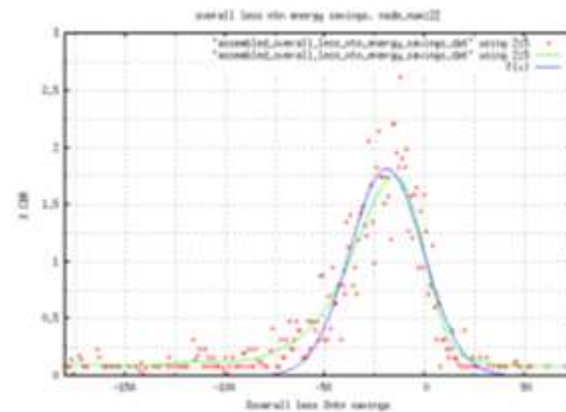


Figure 16: % cbr for OLNTNES node_number 22
 17. Node Number 23

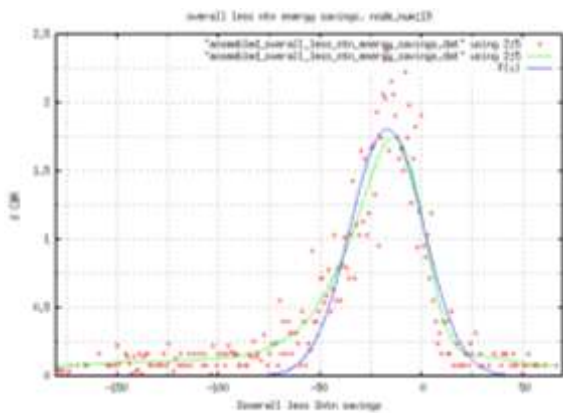


Figure 13: % cbr for OLNTNES node_number 19
 14. Node Number 20

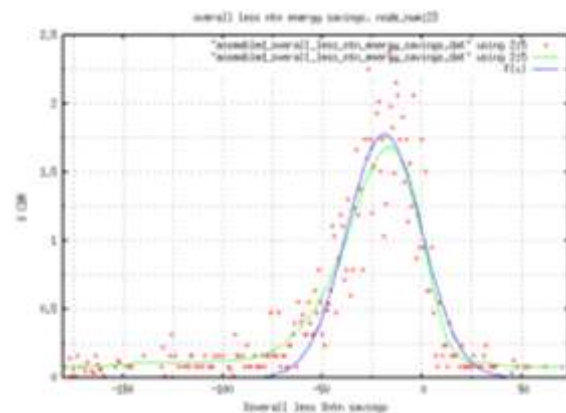


Figure 17: % cbr for OLNTNES node_number 23
 18. Node Number 24

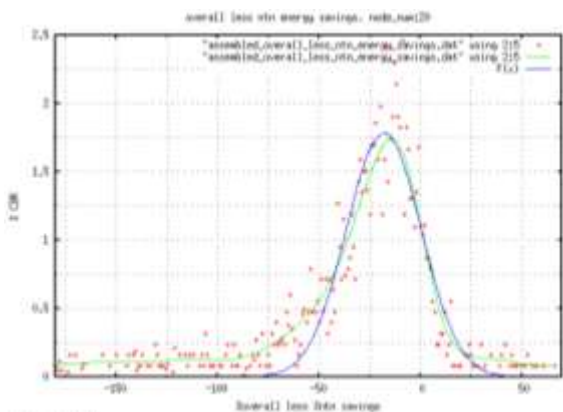


Figure 14: % cbr for OLNTNES node_number 20
 15. Node Number 21

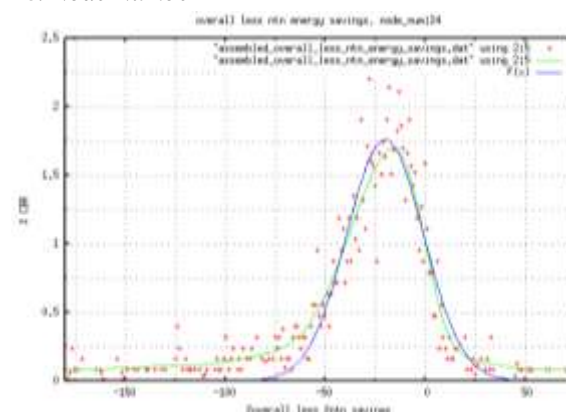


Figure 18: % cbr for OLNTNES node_number 24
 19. Node Number 25

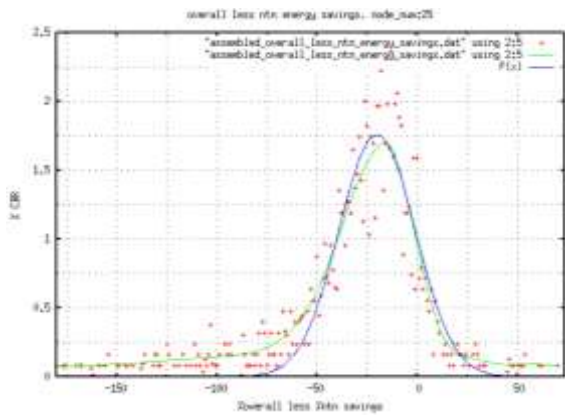


Figure 19: % cbr for OLNTNES node_number 25
 20. Node Number 26

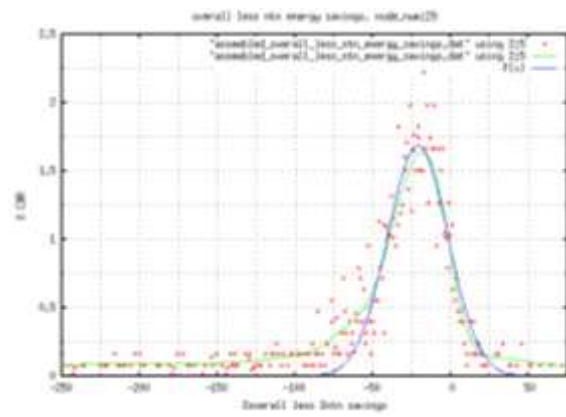


Figure 23: % cbr for OLNTNES node_number 29
 24. Node Number 30

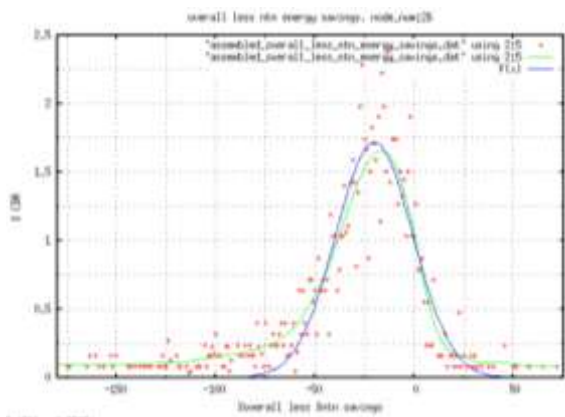


Figure 20: % cbr for OLNTNES node_number 26
 21. Node Number 27

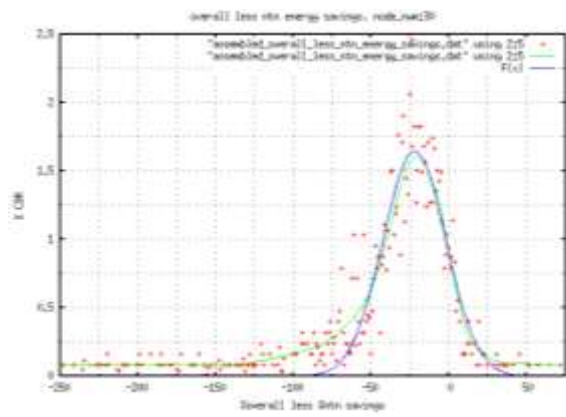


Figure 24: % cbr for OLNTNES node_number 30
 25. Node Number 31

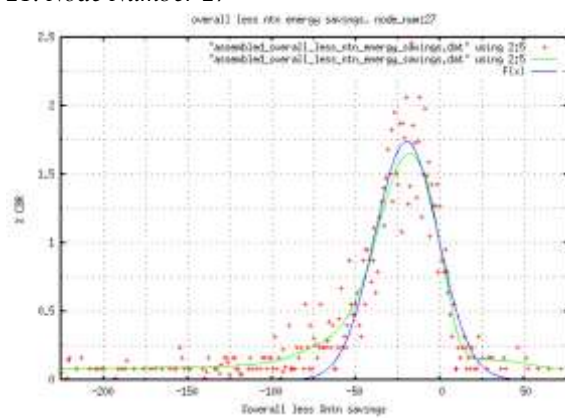


Figure 21: % cbr for OLNTNES node_number 27
 22. Node Number 28

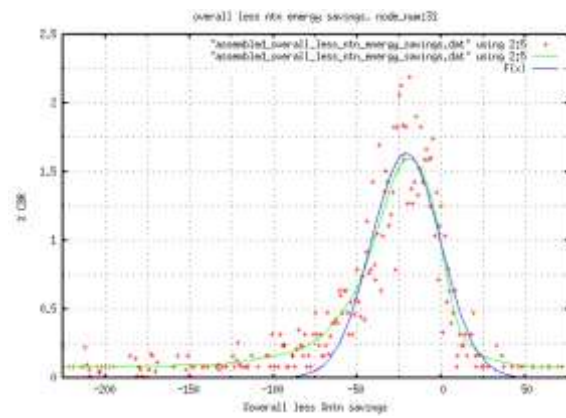


Figure 25: % cbr for OLNTNES node_number 31
 26. Node Number 32

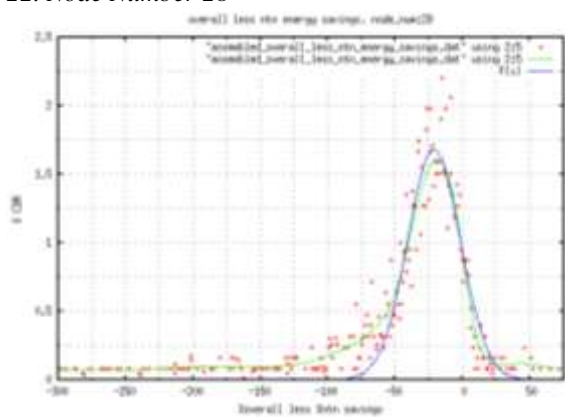


Figure 22: % cbr for OLNTNES node_number 28
 23. Node Number 29

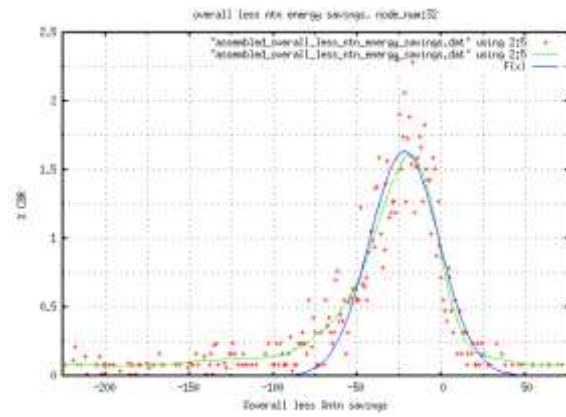


Figure 26: % cbr for OLNTNES node_number 32
 27. Node Number 33

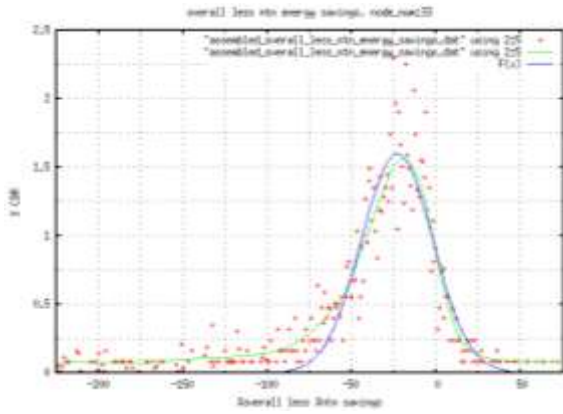


Figure 27: % cbr for OLNTNES node_number 33
28. Node Number 34

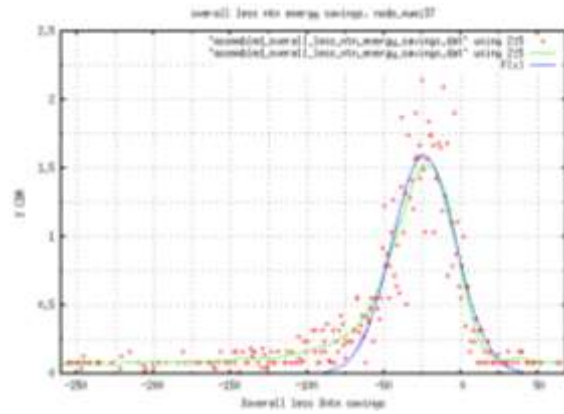


Figure 31: % cbr for OLNTNES node_number 37
32. Node Number 38

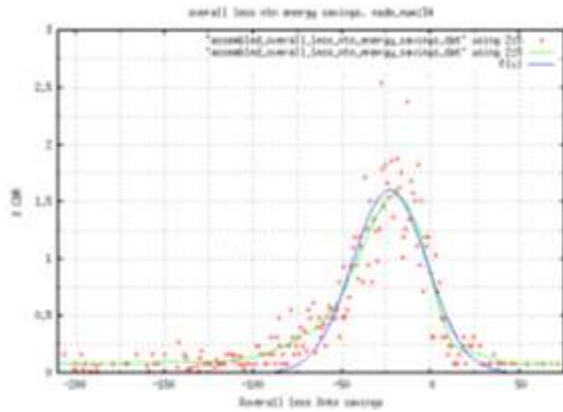


Figure 28: % cbr for OLNTNES node_number 34
29. Node Number 35

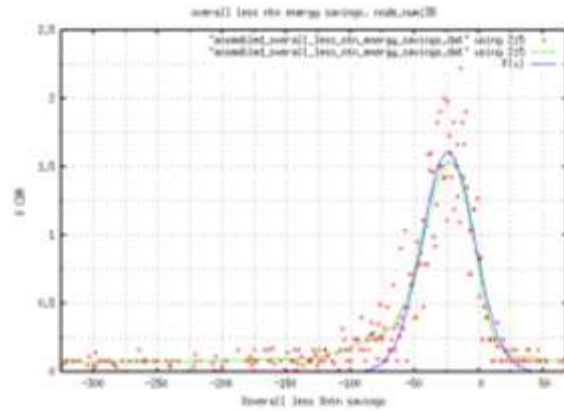


Figure 32: % cbr for OLNTNES node_number 38
33. Node Number 39

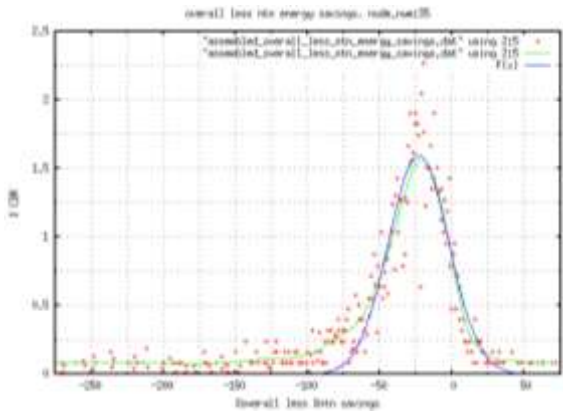


Figure 29: % cbr for OLNTNES node_number 35
30. Node Number 36

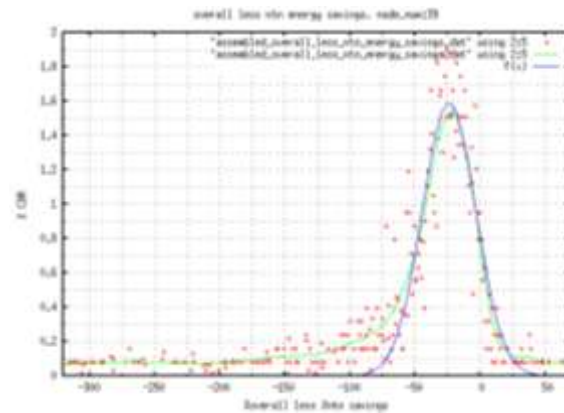


Figure 33: % cbr for OLNTNES node_number 39
34. Node Number 40

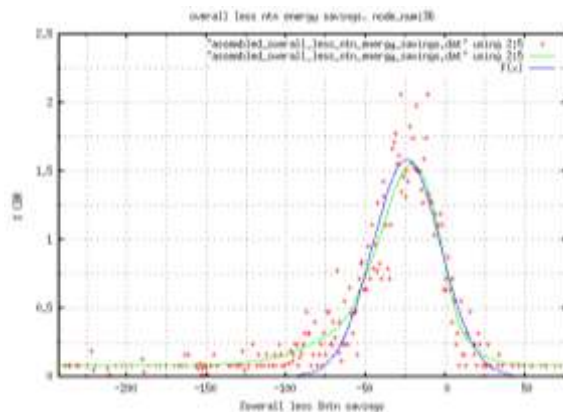


Figure 30: % cbr for OLNTNES node_number 36
31. Node Number 37

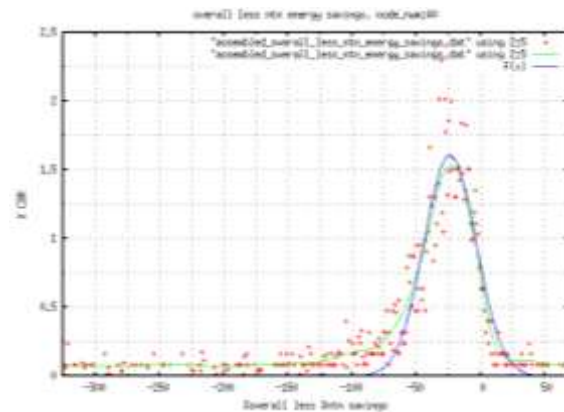


Figure 34: % cbr for OLNTNES node_number 40
35. Node Number 41

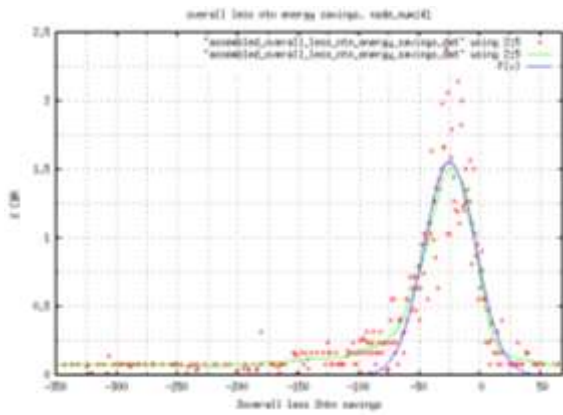


Figure 35: % cbr for OLNTNES node_number 41
36. Node Number 42

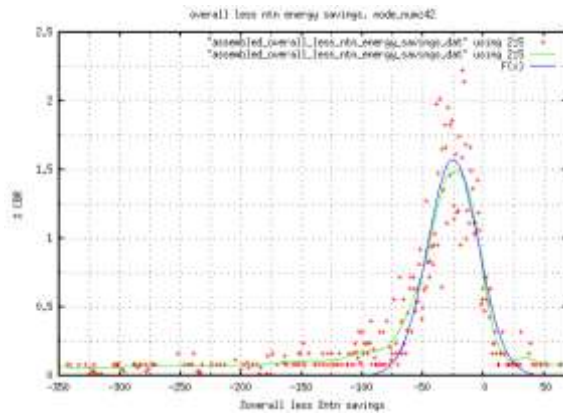


Figure 36: % cbr for OLNTNES node_number 42
37. Node Number 43

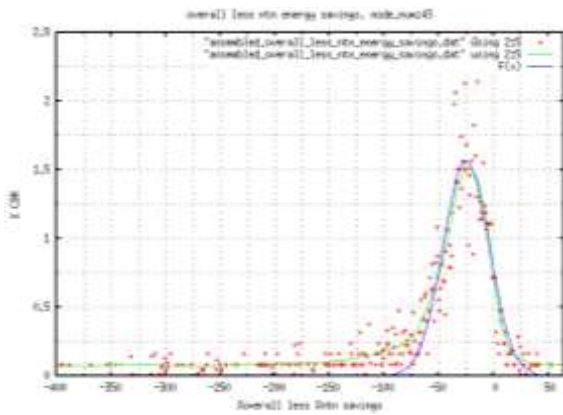


Figure 37: % cbr for OLNTNES node_number 43
38. Node Number 44

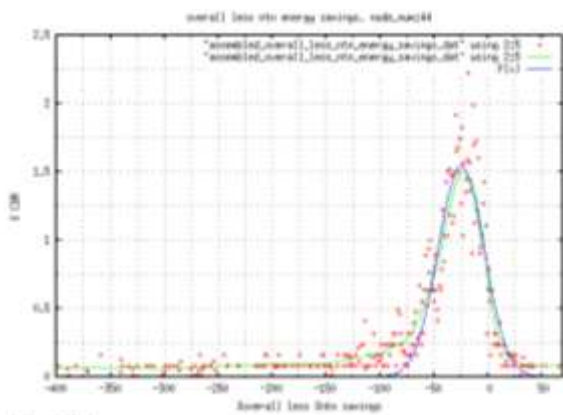


Figure 38: % cbr for OLNTNES node_number 44
39. Node Number 45

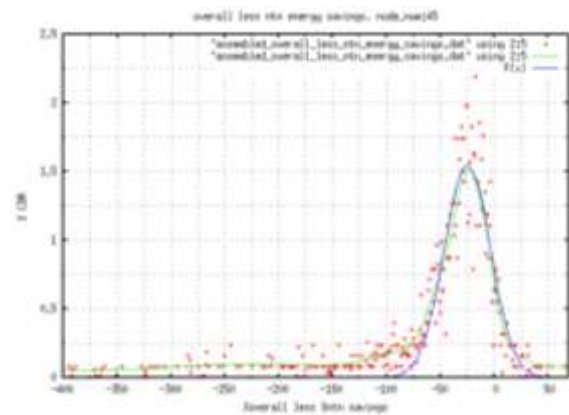


Figure 39: % cbr for OLNTNES node_number 45
40. Node Number 46

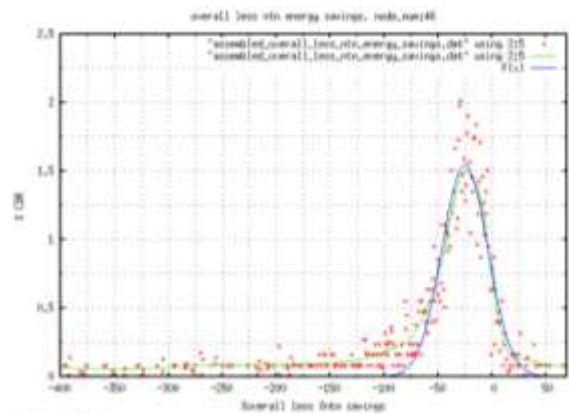


Figure 40: % cbr for OLNTNES node_number 46
41. Node Number 47

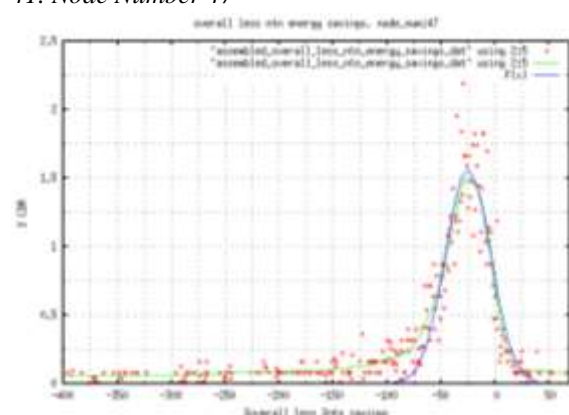


Figure 41: % cbr for OLNTNES node_number 47
42. Node Number 48

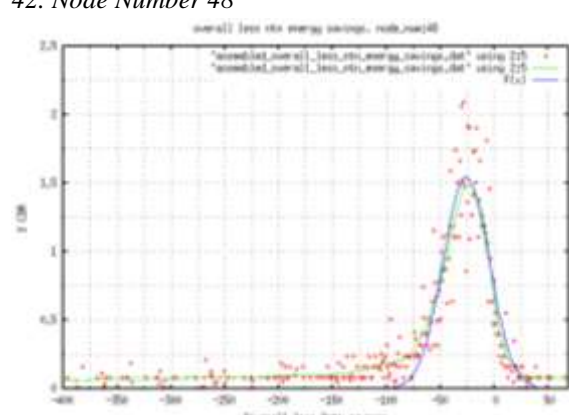


Figure 42: % cbr for OLNTNES node_number 48
43. Node Number 49

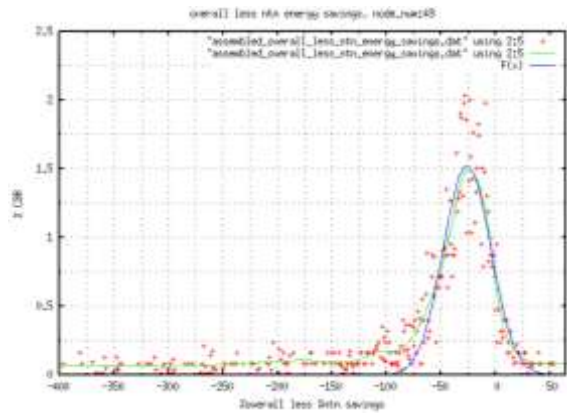


Figure 43: % cbr for OLNTNES node_number 49
 44. Node Number 50

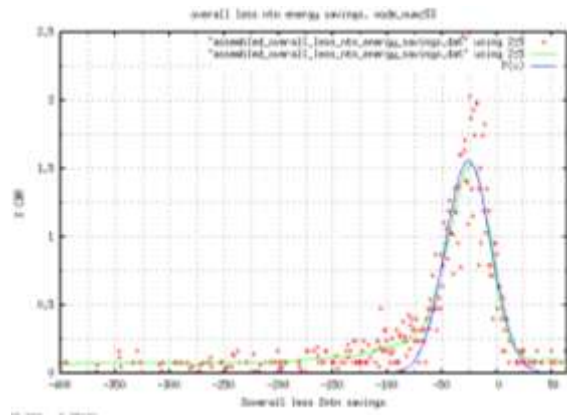


Figure 47: % cbr for OLNTNES node_number 53
 48. Node Number 54

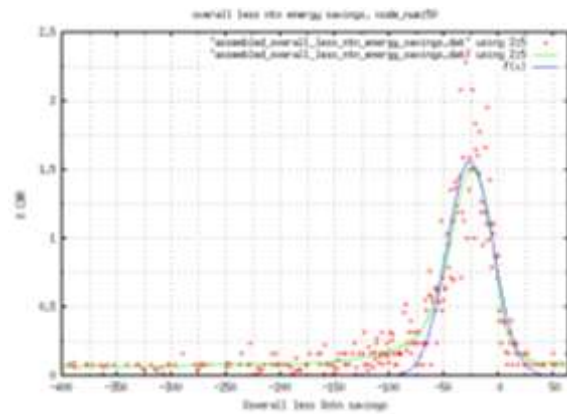


Figure 44: % cbr for OLNTNES node_number 50
 45. Node Number 51

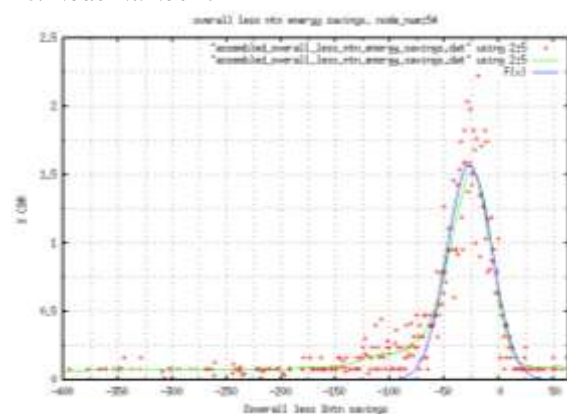


Figure 48: % cbr for OLNTNES node_number 54
 49. Node Number 55

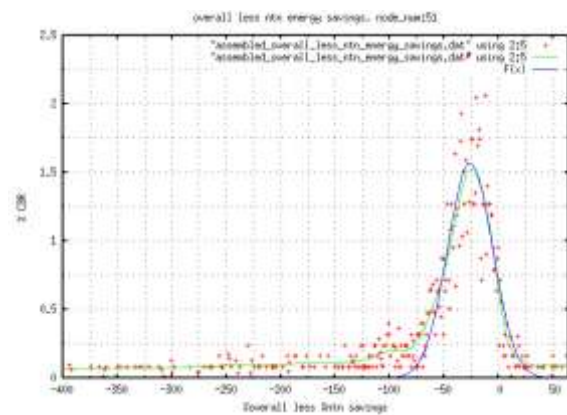


Figure 45: % cbr for OLNTNES node_number 51
 46. Node Number 52

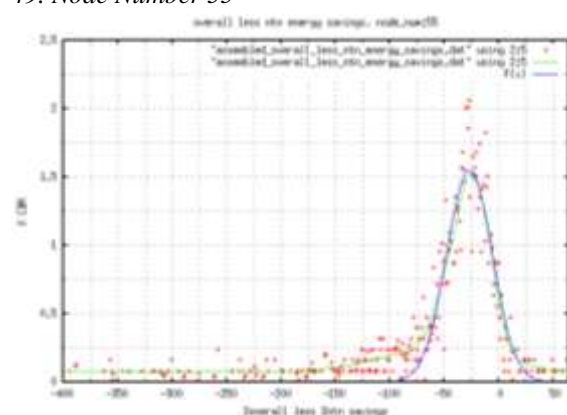


Figure 49: % cbr for OLNTNES node_number 55
 50. Node Number 56

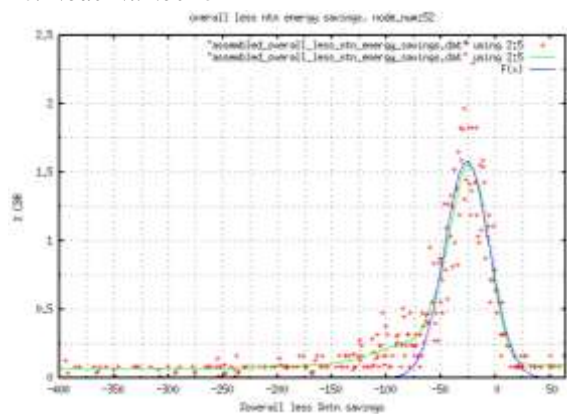


Figure 46: % cbr for OLNTNES node_number 52
 47. Node Number 53

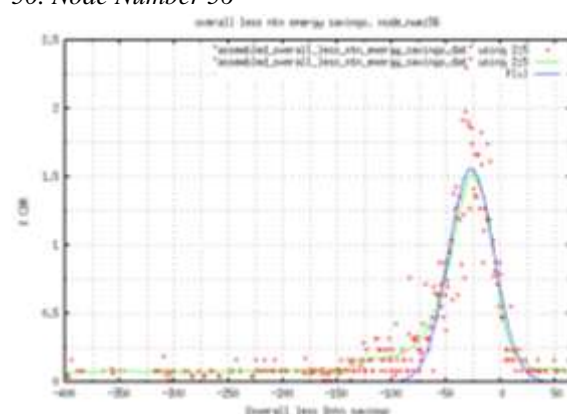


Figure 50: % cbr for OLNTNES node_number 56

4. Conclusion.

This piece of research was aimed at and has developed a new model of expected trend of overall node extra energy savings achievable in a MANET topography of 300 x 300 m² compared against those achieved in direct node-to-node transmission. This piece of research was derived from previous research with more emphasis from two papers [2, 14]. The model obtained will help designers better understand the impact of additional energy requirements required for MANET transmission from software engineering perspective of reliability and predictability. Here also, the results produced are empirical since they are derived from previous empirical results. For this study, many high-end components are assumed as available even if they are still subjects of research, e.g. lightweight algorithms for location-aware transmission in mobile environments, land-based or infrastructure-based location support with appropriate algorithms and lightweight OS supports.

The major conclusion of this study remain that, firstly, if MANET nodes are not supplied as infrastructure and their energy expenditure is of great concern, a great majority of CBRs will be requiring more energy for transmission than direct node-to-node transmission.

The further works identified may include: trend analyses of parameters of equation for the model, formulating method of predictability for metric OLNTNES and its trend and reporting observations of certain values identified.

References

- [1] M. Kaleem GALAMALI, Assoc. Prof Nawaz MOHAMUDALLY, Towards Dependable Pervasive Systems-A Position and Vision Paper, CEET 2014
- [2] M. Kaleem GALAMALI, Assoc. Prof Nawaz MOHAMUDALLY, Model of Energy Savings achievable with Location-aware Node-to-Node Transmission in UbiComp , CEET 2014
- [3] M. Kaleem GALAMALI, Assoc. Prof Nawaz MOHAMUDALLY, Model of Energy Savings achievable with Location-aware Node-to-Node Transmission in UbiComp Using Location Refresh Intervals, CEET 2014
- [4] M. Kaleem GALAMALI, Assoc. Prof Nawaz MOHAMUDALLY, Model of Energy Savings achievable with Location-aware Transmission in UbiComp Using Relays, CEET 2014
- [5] M. Kaleem GALAMALI, Assoc. Prof Nawaz MOHAMUDALLY, Mathematical modeling of need of exact number of relays to ensure seamless mobility in mobile computing, CEET 2014
- [6] M. Kaleem GALAMALI, Assoc. Prof Nawaz MOHAMUDALLY, Modelling of need for multiple relays for ensuring seamless mobility, CEET 2014
- [7] M. Kaleem GALAMALI, Assoc. Prof Nawaz MOHAMUDALLY, Investigation of prominence of placements of relays in a ubicomp topography,
- [8] M. Kaleem GALAMALI, Assoc. Prof Nawaz

- MOHAMUDALLY, Model of energy savings achievable with location-aware transmission in ubicomp using optimised number of relays.
- [9] M. Kaleem GALAMALI, Assoc. Prof Nawaz MOHAMUDALLY, Investigation of Prominence of Placements of Optimised Number of Relays in a UbiComp Topography using Location-Aware Transmission, CEET 2015.
- [10] M. Kaleem GALAMALI, Assoc. Prof Nawaz MOHAMUDALLY, Extending Node Battery Availability in UbiComp with Location-Aware Transmission, CEET 2015.
- [11] M. Kaleem GALAMALI, Assoc. Prof Nawaz MOHAMUDALLY, Extending Node Battery Availability in UbiComp with Location-Aware Transmission using Location Refresh Intervals, CEET 2015.
- [12] M. Kaleem GALAMALI, Assoc. Prof Nawaz MOHAMUDALLY, Extending Node Battery Availability in UbiComp with Location-Aware Transmission using Uniformly Placed Relays, CEET 2015.
- [13] M. Kaleem GALAMALI, Assoc. Prof Nawaz MOHAMUDALLY, Extending Node Battery Availability in UbiComp with Location-Aware Transmission Using Optimally Placed Relays, CEET 2015.
- [14] M. Kaleem GALAMALI, Assoc. Prof Nawaz MOHAMUDALLY, Model of Sender Node Energy Savings Achievable with Location-Aware MANET Transmission in UbiComp, ACCN 2016
- [15] M. Kaleem GALAMALI, Assoc. Prof Nawaz MOHAMUDALLY, Model of Overall Node Energy Savings Achievable with Location-Aware MANET Transmission in UbiComp, ACCN 2016
- [16] M. Kaleem GALAMALI, Assoc. Prof Nawaz MOHAMUDALLY, Model of Sender Node Extra Energy Savings Achievable in MANET Against Direct Node-to-Node Transmission Using Location-Aware Transmission in UbiComp.
- [17] Markus Bylund and Zary Segall, Towards seamless mobility with personal servers, 2004.
- [18] Masugi Inoue, Mikio Hasegawa, Nobuo Ryoki and Hiroyuki Morikawa, Context-Based Seamless Network and Application Control, 2004
- [19] Xiang Song, Umakishore Ramachandran, MobiGo: A Middleware for Seamless Mobility, College of Computing Georgia Institute of Technology, Atlanta, GA, USA, August 2007
- [20] Budzisz, Ferrús, R., Brunstrom A., Grinnemo, K, Fracchia, R., Galante, G., and Casadevall, F. Towards transport-layer mobility: Evolution of SCTP multihoming, March 2008
- [21] Paul Dourish & Genevieve Bell, Divining a digital future, 2011.
- [22] Xiang Song, Seamless Mobility In Ubiquitous Computing Environments, PhD Thesis, Georgia Institute of Technology, August 2008
- [23] Kevin O Mahony, Jian Liang, Kieran Delaney, User-Centric Personalization and Autonomous Reconfiguration Across Ubiquitous Computing Environments, NIMBUS Centre Cork Institute of Technology, Cork, Ireland, UBICOMM 2012
- [24] Pablo Vidales, Seamless mobility in 4G systems, *Technical Report, University of Cambridge*, Computer Laboratory, Number 656, November 2005
- [25] João Pedro Sousa and David Garlan, Aura: An Architectural Framework for User Mobility in Ubiquitous Computing Environments, School of Computer Science, Carnegie Mellon University, USA, August 2002
- [26] Dennis Lupiana, Ciaran O'Driscoll, Fredrick Mtenzi, Defining Smart Space in the Context of Ubiquitous Computing, Dublin Institute of Technology, Ireland, Special Issue on ICIT 2009 Conference - Web and Agent Systems, 2009
- [27] N.S.V.Shet1, Prof.K.Chandrasekaran2 and Prof. K.C.Shet3, *WAP Based Seamless Roaming In Urban Environment with Wise Handoff Technique*, International Journal of UbiComp (IJU), Vol.1, No.4, October 2010
- [28] Yipeng Yu Dan He Weidong Hua Shijian Li Yu Qi Yueming Wang Gang Pan, FlyingBuddy2: A Brain-controlledAssistant for the Handicapped, Zhejiang University, *UbiComp '12*, September 5-8, 2012.

- [29] Jing Su, James Scott, Pan Hui, Jon Crowcroft, Eyal de Lara Christophe Diot, Ashvin Goel, Meng How Lim, and Eben Upton, Hagggle: Seamless Networking for Mobile Applications, 2007
- [30] Rui Han, Moustafa M. Ghanem, Li Guo, Yike Guo*, Michelle Osmond, Enabling cost-aware and adaptive elasticity of multi-tier cloud applications, Future Generation Computer Systems, 2012
- [31] Byrav Ramamurthy, K. K. Ramakrishnan , Rakesh K. Sinha, Cost and Reliability Considerations in Designing the Next-Generation IP over WDM Backbone Networks, 2012.
- [32] Bhavish Aggarwal, Aditya Akella, Ashok Anand, Athula Balachandran, Pushkar Chitnis, Chitra Muthukrishnan, Ram Ramjee and George Varghese, EndRE: An End-System Redundancy Elimination Service for Enterprises, NSDI 2010, San Jose, CA
- [33] Ashok Anand, Vyas Sekar and Aditya Akella, SmartRE: An Architecture for Coordinated Network-wide Redundancy Elimination, SIGCOMM 2009, Barcelona, Spain
- [34] John Breeden II, "Smart-phone battery life could double – without better batteries", Nov 14, 2012
- [35] Andy Boxall, "When will your phone battery last as long as your kindle", December 5, 2012.
- [36] Imielinski, T. and Navas, J.C. (1999). GPS-based geographic addressing, routing, and resource discovery. *Comms. ACM*, Vol. 42, No. 4, pp. 86-92.
- [37] Hightower, J. and Borriello, G. (2001). Location Systems for Ubiquitous Computing. *IEEE Computer*, Vol. 34, No. 8, August, pp. 57-66.
- [38] Harter, A., Hopper, A., Steggles, P., Ward, A. and Webster, P. (2002). The Anatomy of a Context-Aware Application. *Wireless Networks*, Vol. 8, No. 2-3, Mar-May, pp. 187-197.
- [39] Hightower, J., Brumitt, B. and Borriello, G. (2002). The Location Stack: A Layered Model for Location in Ubiquitous Computing. *Proceedings of the 4th IEEE Workshop on Mobile Computing Systems & Applications (WMCSA 2002)*, Callicoon, NY, USA, June, pp. 22-28.
- [40] Graumann, D., Lara, W., Hightower, J. and Borriello, G. (2003). Real-world implementation of the Location Stack: The Universal Location Framework. *Proceedings of the 5th IEEE Workshop on Mobile Computing Systems & Applications (WMCSA 2003)*, Monterey, CA, USA, October, pp. 122-128.
- [41] Ko, Y., & Vaidya, N. H. (2000). Location-aided routing (LAR) in mobile ad hoc networks. *Wireless Networks*, 6(4), 307-321.
- [42] Liao, W.-H., Tseng, Y.-C., & Sheu, J.-P. (2001). GRID: a fully location-aware routing protocol for mobile ad hoc networks. *Telecommunication Systems*, 18(1), 37-60.
- [43] Kuhn, F., Wattenhofer, R., Zhang, Y., & Zollinger, A. (2003). Geometric ad-hoc routing: of theory and practice. In *Proceedings of the ACM (PODC'03)* (pp. 63-72).
- [44] Jiang, X., & Camp, T. (2002). Review of geocasting protocols for a mobile ad hoc network. In *Proceedings of the Grace Hopper Celebration (GHC)*.
- [45] Ko, Y. & Vaidya, N. H. (1999). Geocasting in mobile ad hoc networks: location-based multicast algorithms. In *Proceedings of the IEEE (WMCSA '99)* (pp. 101).
- [46] Mauve, M., Fuler, H., Widmer, J., & Lang, T. (2003). *Position-based multicast routing for mobile ad-hoc networks* (Technical Report TR-03-004). Department of Computer Science, University of Mannheim.
- [47] Xu, Y., Heidemann, J., & Estrin, D. (2001). Geography-informed energy conservation for adhoc routing. In *Proceedings of the ACM/IEEE (MOBICOM'01)* (pp. 70-84).
- [48] Hu, Y.-C., Perrig, A., & Johnson, D. (2003). Packet leashes: a defense against wormhole attacks in wireless ad hoc networks. In *Proceedings of the INFOCOM' 03* (pp. 1976-1986).
- [49] Patwari, N., Hero III, A. O., Perkins, M., Correal, N. S., & O'Dea, R. J. (2003). Relative location estimation in wireless sensor networks. *IEEE Transactions on Signal Processing*, 51(8), 2137-2148.
- [50] Baldauf, M., Dustdar, S., & Rosenberg, F. (2007). A Survey on Context Aware Systems. *International Journal of Ad Hoc and Ubiquitous Computing*, Inderscience Publishers. forthcoming. Pre-print from: <http://www.vitalab.tuwien.ac.at/~florian/papers/ijahuc2007.pdf>
- [51] Hong, D., Chiu, D.K.W., & Shen, V.Y. (2005). Requirements elicitation for the design of context-aware applications in a ubiquitous environment. In *Proceedings of ICEC'05* (pp. 590-596).
- [52] Neeraj Tantubay, Dinesh Ratan Gautam and Mukesh Kumar Dhariwal, A Review of Power Conservation in Wireless Mobile Ad hoc Network (MANET)", *International Journal of computer Science Issues*, Vol 8, Issue 4, No 1, July 2011.

About Author (s):

Associate Professor Nawaz Mohamudally works at University of Technology, Mauritius (UTM) and has undertaken supervision of MPhil/PhD Students for many years.



M. Kaleem Galamali is a part-time student (achieved M Phil Transfer on 28.10.2014, currently PhD student) at UTM under supervision of A.P. Nawaz Mohamudally.