

Ontology based approach to Fuzzy student model design

Salisu Muhammad Sani

Department of Computer Science

University Putra Malaysia

43300 Selangor, Malaysia

Teh Noranis Mohd Aris

Department of Computer Science

University Putra Malaysia

43300 Selangor, Malaysia

ABSTRACT

The integration of Information and Communication Technology (ICT) in the teaching and learning process in our today's educational environments gave birth to what is known as e-learning technology. Correct implementation of these e-learning technologies can bring about a number of potential benefits to the educational systems that can ultimately lead to achieving the desired objectives through the use of these modern and qualitative innovations. When these technologies and innovations are effectively used in the instructional process not only will they reduce the cost effectiveness of the pedagogical and other relative constraints, but can also create a conducive atmosphere for exploring effective designed components from different perspectives. An important component of these e-learning systems in use today is called the intelligent tutoring system (ITS). ITS is a software system designed using artificial intelligent techniques (comprising of Fuzzy Logic, Neural-Networks, Bayesian networks, Ontology, Genetic Algorithms and Software Agents) to provide a personalized tutoring adaptable to each student based on his/her profile or characteristics. In this paper we intend to employ the use of Fuzzy logic and Ontology techniques to model the student's learning behaviour with the aim of improving the learning path and increase the system's adaptability. The use of fuzzy logic in this context is to enable the computational analysis of the student's characteristics and learning behaviours in order to handle the uncertainty issues related to the student model design. Ontology approach on the other hand is one of the recent techniques used to design the representation of student's cognitive state. Moreover, Ontology is considered as a key component for managing knowledge in a particular domain, and we intend to use its methodology as a tool to examine and manage the student's knowledge state, competency and skills.

Keywords- ITS, Fuzzy Logic, Ontology, Stud. Model

I. INTRODUCTION

The ITSs are software programs that provide support to the teaching and learning activities. The goal of these systems is to provide an automated alternative and modern way of changing the roles of a human teacher and improving it. An important characteristic of these intelligent tutoring systems is that they have the ability to make their instruction adaptive to cater for the needs and aspirations of each individual learner as much and better as human tutors can do. A standard architecture for these systems is made up of four basic components comprising of the student module (who to teach), the pedagogical module (how to teach), the domain module (what to teach) and the interface module (user-system interactive environment). One way to achieve the adaptation by ITS systems is through modelling the student module component of a typical ITS system. But the task of building an accurate student model is always faced with serious and challenging issues because the information available during initial interaction with the student is always explicit and such information can only give a partial representation of the expected student's knowledge state [1]. This partial representation of the knowledge state creates a major problem of having an inherent uncertainty in the student behaviour and current knowledge state. To deal with this uncertainty issue in student modelling, the Fuzzy logic technique is employed to provide an effective learning path for both the students and the tutors [5]. Effective use of the fuzzy logic technique can provide a means of diagnosing (improving the prediction accuracy) of the complete student behaviour and that can also equip the learning environment with intelligent

reasoning abilities. The intelligent reasoning abilities can be used to generate pedagogical recommendations based on each individual student's profile and learning style. Both students and instructors in the learning environment can benefit through the implementation of the fuzzy logic technique by using the approach as a tool to encode knowledge in both structured and non structured form to solve pedagogical, adaptive and personalized recommendation issues [14].

II. RELATED LITERATURE

A. Overview of Student Model Design

The student model as one of the major components of a standard ITS system reflects what the system can infer about the student's cognitive state. The goal of the student model design is to make any typical ITS system adaptive in order to specify learning path suitable to each user, monitor and manage user's activities, identifying the user needs and preferences and to dynamically exploit both the student knowledge and domain knowledge to enhance the teaching and learning process [3]. Developing an adaptive learning system can sometimes be challenging due to the individual differences that exist among students. Every student has his/her peculiar needs, preferences and characteristics [12]. The student modeling technique proves to be a promising approach to effectively handle all those challenges not only within ITS systems but can be extended to most educational software applications that are intended to be adaptive and personalized.

B. State of the art in student model design

Recently, a number of works involving student model design have been developed with the aim of improving the intelligent tutoring system environment to be more adaptive and personalized to handle all issues related to student component of an ITS. Almost all the existing platforms use various artificial intelligence (AI) techniques to model the systems. Some uses single AI technique while others uses multiple AI techniques to achieve this objective. But regardless of which technique is employed, the idea remain the same i.e. they all aim at improving the teaching and learning process in any ITS. The table below gives a summary of some of the models describing their features and the techniques used to model them.

Table 1. Comparison Table for five existing student models

Model	Feature	Technique
PeRSIVA, 2013	Emp. Eval. of Stud. Model	Oval+Ster+FL
Grubisic , 2013	Stud. Model	Ontology+BN
Paneva, 2007	Semantic Rep.Stud. Model	Ontology
Pena-Ayala, 2011	Predictive Stud. Model	Fuzzy-Causal
Conati, 2002	Stud. Model	Bayesian Net

III. PROPOSED TECHNIQUES

A. Fuzzy logic technique in student modeling

A major issue of great concern in student modeling is the inherent uncertainty that exist due to lack of sufficient information with high degree of certainty to build this model. Tracking the student's activities in the system is one way of dealing with this issue because it helps in providing the sufficient information needed to build the student profile. But when these activities do not happen, then the only way to diagnose the situation is to apply efficient AI techniques that can provide the model with the required information having a higher degree of accuracy from the small and uncertain information available.

Every standard ITS system rely on the student model as a bench mark for decision making so if this uncertainty issue characterized with student model design is not properly handled, it may leads to having a poor and non adaptive instructional and learning environment. The fuzzy logic as a powerful computational intelligent technique is used to handle the uncertainty reasoning in student modelling [7]. The advantage of using fuzzy logic over other probabilistic techniques is very clear, the fuzzy logic theory can be used in a wide range of domains in which the information is incomplete or imprecise and because fuzzy reasoning is approximate in nature, it creates an inference procedure that helps in drawing conclusions from a set fuzzy if-then rules and one

or more conditions [2]. Moreover fuzzy logic is in the form of many valued function and this made fuzzy variables to have truth values ranging in degrees between 0 and 1. Unlike in most probabilistic and traditional logic approaches where every proposition in their premises is either true or false, fuzzy logic is widely employed to deal with issues of partial truth (inherent uncertainty) where the truth values may be ranging between completely true and completely false intervals in other words fuzzy logic is used to handle reasoning that is approximate rather than fixed and exact [8]. The figure below is the fuzzy student architecture.

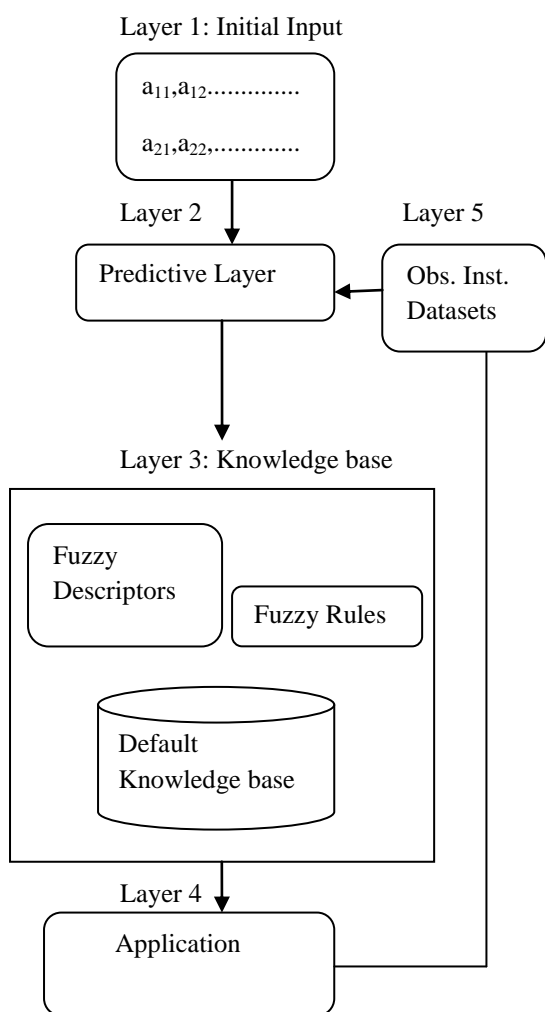


Fig.1. Conceptual Fuzzy student model architecture

B. Ontology approach to Fuzzy student model design

To the artificial intelligence community, ontology is defined as an explicit specification of conceptualization [13]. The very essence of building

ontology is to have a sophisticated knowledge representation about a target domain. In the general notion of semantic theory, ontologies are used to encode meaning into a particular domain in order to facilitate the understanding of the relationship between entities in a domain [4]. The student model as a key component of intelligent tutoring systems use to hold information about the learner such as the learning style, personal data as well as student’s academic status. For any ITS system to be very adaptive and capable of personalizing the teaching and learning process, this information within the student model must be managed effectively. Ontology is a powerful technique that is usually employed in student model design. There are two major reasons why ontology is used in student model design, first, ontology allows knowledge management and retrieval through the use of inference tools in the form of a reasoner to manipulate the information in the model. Secondly, ontology encourages the formal design of abstract concepts and properties in a manner that allow various tasks to re-use the concepts and properties effectively [6]. The figure 2 below is an example to show a small concept relation for an object student.

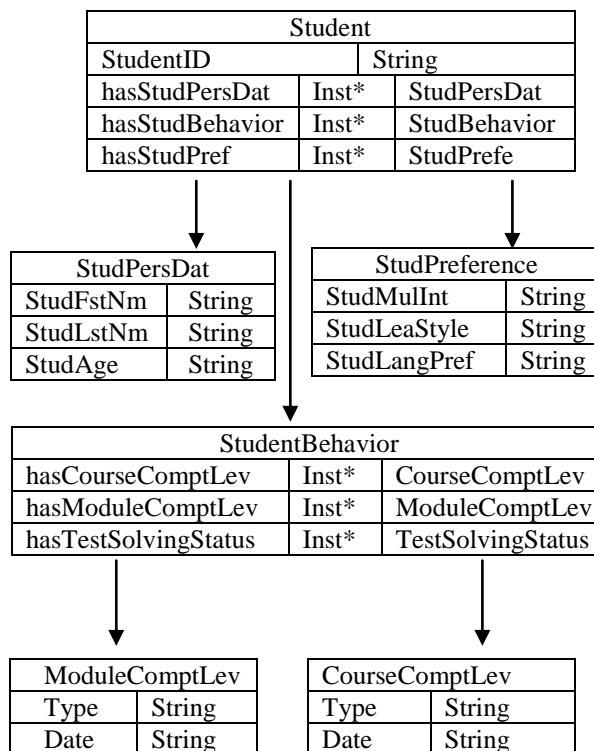


Fig 2. Concept Relation Ontology for student mode

IV. CONCLUSION AND FEATURE WORK

The student model is the base for designing an effective and adaptive intelligent tutoring system. In this paper, we propose the use of two powerful computational intelligent techniques, fuzzy logic and ontology in order to build an effective student model component of an ITS system. Both are suitable tools that have the ability to improve our proposed model in order to enhance the intelligent tutoring environment. As feature enhancement, it is advisable to marry any or both techniques with any other artificial intelligent technique like data mining, genetic algorithms etc. can help to improve the model.

REFERENCES

- [1] C. Conati, "Bayesian student modeling", *Advances in Intelligent Tutoring System Studies in Computational Intelligence*, 2010.
- [2] F. Masulli, "Introduction to fuzzy logic and systems", 2010
- [3] K. Chrystafiadi, & M. Virvou, "An empirical evaluation method of a student model of an e-learning environment for computer programming", 2013.
- [4] G. Ganapathy, & S. Sagayaraj, "To generate the ontology from java source code", *International journal of Advanced Computer Science and Applications*, Vol.2 Issue 2. 2011.
- [5] H. Fazlollahtabar & I. Mahdavi, "User/ Tutor optimal learning path in e-learning using comprehensive neuro fuzzy approach", *Educational Research Review*, Vol 4 Issue 2, 2009.
- [6] D. Paneva, "Use of ontology-based student model in digital libraries", 2006.
- [7] A. Zadah, "Probability theory and fuzzy logic", 2002.
- [8] V. Novak, I. Perfilieva, & J. Mockof, "Mathematical principles of fuzzy logic", *The Springer International Series in Engineering and Computer Science*, 1999.
- [9] O. Nyakanen, "Fuzzy systems in student classification", 2006.
- [10] D. Paneva, "Ontology-based student modeling", In *Proceeding of: Fourth HABUSKA Workshop Semantic Web Wknowledge Technology Applicatin*, 2007.
- [11] I. Panagiotopolous, A. Kalou, P. Christor, & A. Kameas, "An ontology-based model for student representation in intelligent tutoring system", *Artificial Intelligence Applications and Innovations* 381: 296-305, Jan 2012
- [12] Lo, Chan & Yeh. "Exploring influences of elementary school student's learning motivation on web-based collaborative learning", *US-China Education Review* Vol. 6 613-299, 2012.
- [13] M. Obitko, "Introduction to ontologies and semantic web", 2007.
- [14] A. Grubisic, S. Stankov, I. Pereic, "Ontology based approach to Bayesian student model" *Expert system with application* vol. 40 pp 5363-5371. (2013).
- [15]. A. Peña-Ayala, H. Sossa-Azuela, F. Cervantes-Pérez, "Predictive student model supported by fuzzy-causal knowledge and information, *Expert system with application*, 2011.

AUTHORS PROFILES



Salisu Muhammad Sani

Teh Noranis Mohd Aris

Teh Noranis Mohd Aris received her B.Sc. in Information Technology from University Utara Malaysia in 1994 and M.Sc. in Artificial Intelligence from University Putra Malaysia in 2002. She received her PhD in Computer Science from University Kebangsaan Malaysia in 2008. She had been working as a programmer and system analyst before she joined University Putra Malaysia as a tutor. She is currently a Senior Lecturer at the Department of Computer Science, Faculty of Computer Science and Information Technology, University Putra Malaysia. Her research interests include Artificial Intelligence, programming science, software agents, bio-nanorobotics and parallel processing. Salisu Muhammad Sani obtained his Bachelor of Science degree in Mathematics from Bayero University Kano, Nigeria in 1999; he later received his Masters degree in Computer Science from the same University in 2010. He is now pursuing his Doctoral degree in Intelligent Computing at University Putra Malaysia. He has been working with the Computer Science department at Jigawa State Polytechnic in Jigawa State Nigeria as a lecturer.