

An Efficient Management Scheduling for rapid data traverse in Wireless sensor network

S.Diwakaran*

ABSTRACT

A wireless sensor network is a collection of nodes organized into a cooperative network. It comprising of spatially appropriated self-ruling mechanisms utilizing sensors to screen physical or ecological conditions. Now a day's wireless sensor network is applied in many applications like military, nuclear power plant. In those applications data transmission rate should be in higher manner and the data transmission time should be very lower and all the nodes are in the cluster should be very secure also. For that single source shortest path algorithm – Dijkstra's algorithm is used , from this algorithm the intermediate node between the sender and the sink node will be reduced and the data path will be reduced and the data transmission time will be reduced .If the node and the cluster is not secure the sensed data will be read by some of the intruder. For secure our cluster three tier security scheme is used. In this security scheme the node, cluster head, sink node are having their own key that is known only by the own cluster nodes. If any node wants to be sending any data to any one of the node, the sender key is verified by the receiver. From this way the unauthorized node will be eliminated from the cluster. That three tier security scheme is achieved by the MD5 hashing algorithm..

Key terms : MD5 hashing, Single source shortest path, Three tier security.

I. INTRODUCTION

In the sensor hubs are made by the clients and the hubs are sent in the fields. The conveyed hub immediately begins their sensing work and transmitting the sensed data to the controller accordingly the sink hub. This is the essential idea of the sensor hubs, This property is connected in the numerous provision and that requisitions are obliged the information transmission time ought to be in exceptionally lower so are obliged the exchanging information is a speedier way . Fast information gathering with the objective to minimize the timetable length for amassed convergecast has been contemplated and additionally by other,tentatively researched the effect of transmission power control and different recurrence channels on the calendar length, while the hypothetical angles where proposed steady consider and logarithmic rough guess calculations on geometric systems (plate charts). Crude information convergecast , where a disseminated time opening work plan is proposed to minimize

the schedule length and the time slots , for minimizing those properties single source shortest path algorithm is used. From this the nodes data path is calculated by their weights or the distance of the node.when the node starts their data transmission to another node it should choose the shortest path to reach the destination for that the node choose the Dijkstra's algorithm.

II. RELATED INFORMATION

Now a days the sensor devices are used in many variety of applications , such as military applications and nuclear power plant application . In military application the nodes are monitors the human movements on the borders, when the movement is maid the deployed sensor nodes transfer the movement notification to the base station, consider this application the sensor nodes are should transfer the data as much possible to the base station , when the nodes send the data as in delay manner means the reaction of the delay causes the big damage . For avoiding these kinds of problems the sensor nodes are select the shortest path between the sender and the destination node.

Fast and reliable converge cast on the MAC layer was presented in[1].They have proposed converge cast of the data where packets can be aggregated on their way to the sink method.Data loss will be occur by the interferences.

Low latency and energy efficient data aggregation enhanced convergecast in wsn was presented in[4].They have proposed Minimum Spanning Tree (MST).Schedule length is higher than degree constrained minimum spanning tree .

What is the fastest rate at which we can collect a stream of aggregated data from a set of wireless sensors organized as a tree was presented in[7].TDMA scheduling on a single channel.Half duplex transceivers is used.

III. PROPOSED ALGORITHM

In this paper the concept of fast data collection towards the network nodes was proposed. Single Source Shortest Path algorithm provide the efficient and faster data collection by avoiding the intermediate node and unnecessary time scheduling in the cluster. And MD5 hashing algorithm is also used for securing the deployed node cluster. The MD5 algorithm is used here as three tier security scheme, from the three tier security our field node and cluster heads and the sink node can be secured . In this security algorithm create the individual public key and the private key for all the nodes . When a node want to send any data to another node means

* Assistant Professor /ECE department
Klasalingam University, Tamil Nadu, INDIA.

that should know the public key of the receiver node that like a id . and the node add the private key in the sending data too . when the receiver node receives that message the node check the private key of the sender node , like these the other nodes like the cluster heads and sink nodes also follow the method of data transmission, from these way the three tier communication security will manage the security over the cluster .

IV. DIJKSTRA'S ALGORITHM

Dijkstra's Algorithm is another well known shortest path routing algorithm. It works on the notion of a candidate neighbouring node set as well as the source's own computation to identify the shortest path to a destination. Another interesting property about Dijkstra's Algorithm is that it computes shortest paths to all destinations from a source, instead of just for a specific pair of source and destination nodes at a time which is very useful, especially in a communication network, since a node wants to compute a shortest path to all destinations.

Algorithm

- Step 1: shortest paths (Graph g, Node s)
- Step 2: initialise_single_source(g, s)
- Step 3: S := { 0 } /* Make S empty */
- Step 4: Q := Vertices(g) /* Put the vertices in a PQ */
- Step 5: while not Empty(Q)
- Step 6: u := Extract Cheapest(Q);
- Step 7: Add Node (S, u); /* Add u to S */
- for each vertex v in Adjacent(u)
- relax (u, v, w)

Sample graph is mentioned below , the 1 -6 nodes are in the edges . The node 1 want to send or reach the node 6 that calculation is explained here that using the Dijkstra's shortest path algorithm .

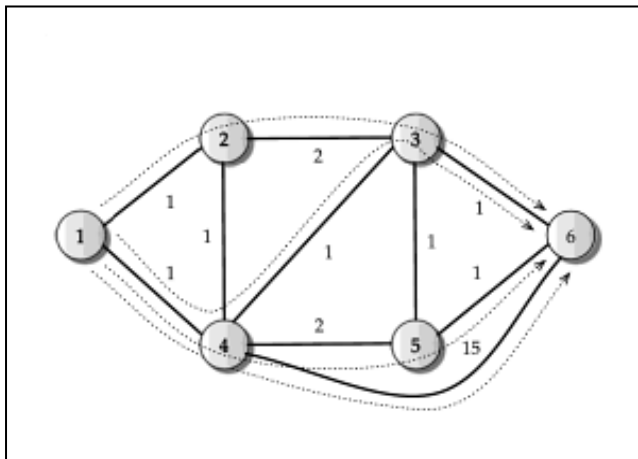


Fig 1 sample path identifying graph

The following table will illustrate the details about the path and cost,

Table1. Path identified from node 1 to node 6, along with associated path cost.

Path	Cost
1-2-3-6	$d_{12}+d_{23}+d_{36}=4$
1-4-3-6	$d_{14}+d_{43}+d_{36}=3$
1-4-5-6	$d_{14}+d_{45}+d_{56}=4$
1-4-6	$d_{14}+d_{46}=16$

By the table the shortest path flow is identified , based on the cost factor the node will be visit by the node .

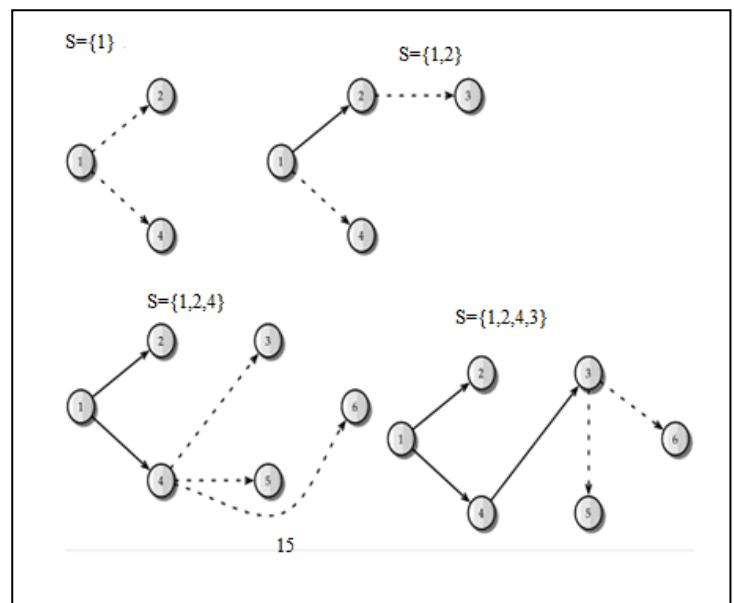


Fig 2 Interactive view of Dijkstra's Algorithm

Thus the way of the path flow will be identified by the dijkstra's algorithm. The remaining node will be eliminated in the resultant graph.

V. MD5 Algorithm

The clustering nodes are should be in very secure manner for that Md5 Message-Digest Algorithm is used which is generally utilized cryptographic hash capacity that transforms a 128-bit (16-byte) hash quality. Md5 has been used in a wide mixed bag of security requisitions. Utilizing Md5, produce a key quality and doled out for every hub in the system, while sending the information to objective, the key worth has been checked by the hand-off hubs and end hub for security. This module guarantees the safe transmission of information parcels over the remote sensor system. Therefore unapproved hub can't send information to the system. Utilizing this security module the greater part of the ambushes in the remote sensor systems, for example reproduction strike, DDos assault, parodying assaults could be evaded based on these algorithm

the private key and public key was developed from these algorithm , the public key was announced in the developed cluster but the private key was kept in secure by all the nodes . when the node start the data transmission time only the key was send to the requested node .

Algorithm

- Step 1 – Append padded bits
- Step 2 – Appended length
- Step 3 – Initialize MD buffer
- Step 4 – Process message in 16-word blocks
- Step 5 –Output

The message is padded so that its length is congruent to 448, modulo 512. A single “1” bit is appended to the message, and then “0”bits are appended so that the length in bits equals 448 modulo 512. A 64 bit representation of b is appended to the result of the previous step .The resulting message has a length that is an exact multiple of 512 bits. A four – word buffer (A, B, C, D) is used to compute the message digest. Four auxiliary functions that take as input three 32-bit words and produce as output one 32-bit word. The message digest produced as output is A, B, C, D. That is output begins with the low-order bite of A, and end with the high-order bite of D.

VI. SIMULATION RESULTS AND ANALYSIS

Thus our proposed system was simulate by the Network Simulator 2 and that’s terminal screens are display here From the above picture we can get the detail of one hob neighbour node detail for the all deployed nodes, Based on the one hob neighbour table only the data will be send to the receiver from the sender node.

Based on the one hob neighbour table the neighbour node is allotted that screen. If the data transmission is depend on the neighbour node allotment the sender data need to reach the multiple nodes , By this the Data Transmission time will be increase . But we need to achieve the fast data collection over the nodes , for these we need to avoid unnecessary time slots and reduce the Data Transmission time . These problems is overcome by the Single Source Shortest Path algorithm

Based on the dijkstra’s calculation is done . After the Dijkstra’s calculation the shortest path will be generated . Based on the shortest path only the data will reach the destination from the source node. When the terminal process is over , the Simulator tool will be generate the data flow from the source node based on the Dijkstra’s algorithm .

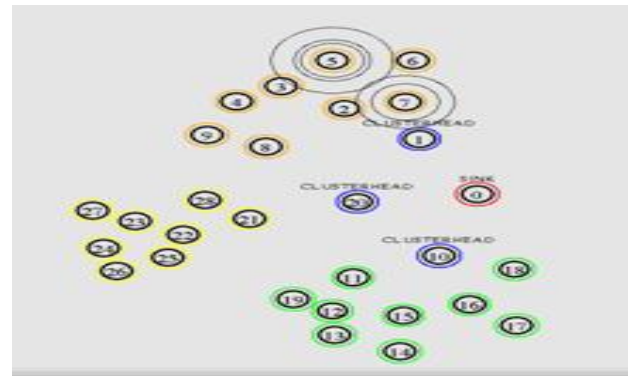


Fig 3 Data Transmission from node 5-7

The data transmission between the node 5-7, because the shortest path 5-7-1 is identified by the Dijkstra’s algorithm . Based on the shortest path the node 5 send the data to the node 7 .

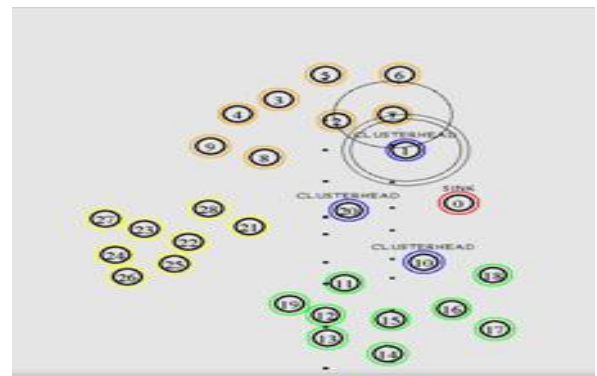


Fig 4 Data Transmission from node 7-1

The Fig 4 shows the data transmission between the node 7-1 , because the shortest path 5-7-1 is identified by the Dijkstra’s algorithm . Based on the shortest path the node 5 send the data to the node 7 already , then the received 7 data is transmitted to the cluster head (node 1) by the node 7 .

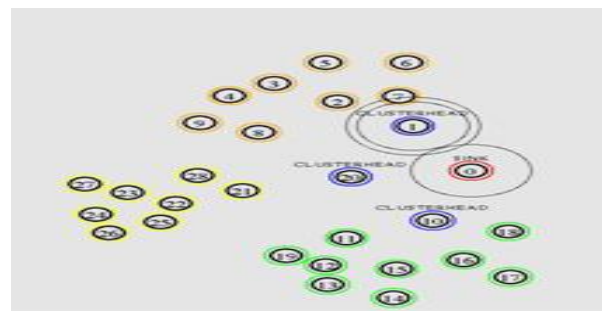


Fig 5. Data Transmission from Cluster head to Sink node

At the final the cluster head will send the received data to the sink node . by this single source shortest path algorithm , the need to transfer over the 2 intermediate node only , so the data will be reach the destination as much as possible.

The NS2 simulation is done and analysed Throughput, delay and packet drop for the flow taken.

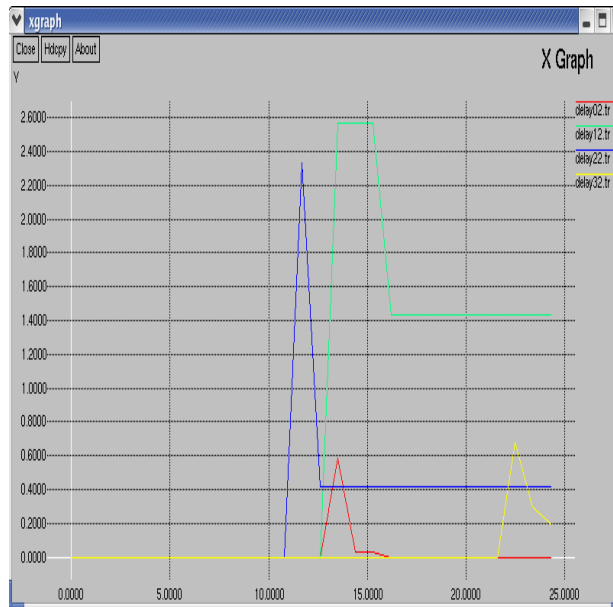


Fig 6. Delay in the simulation phase

The above graph defines the delay in the simulation phase. The experiment was running 25 seconds of time. End to End Delay refers to the time taken for a packet to be transmitted across a network from source to destination during the simulation time.

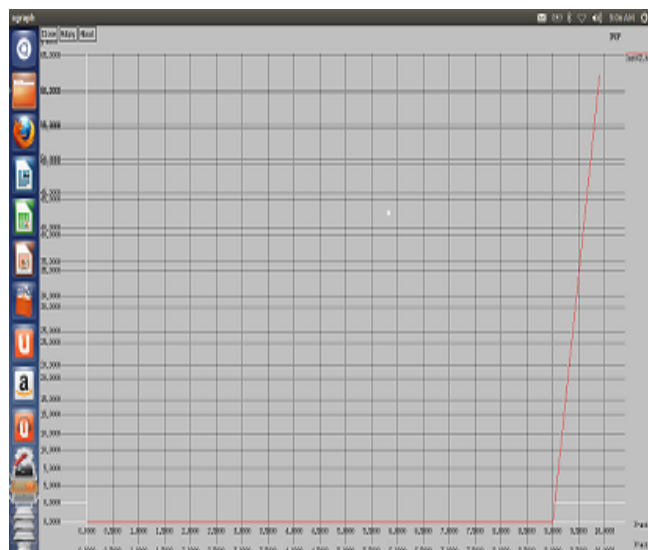


Fig 7. Drop in the simulation phase

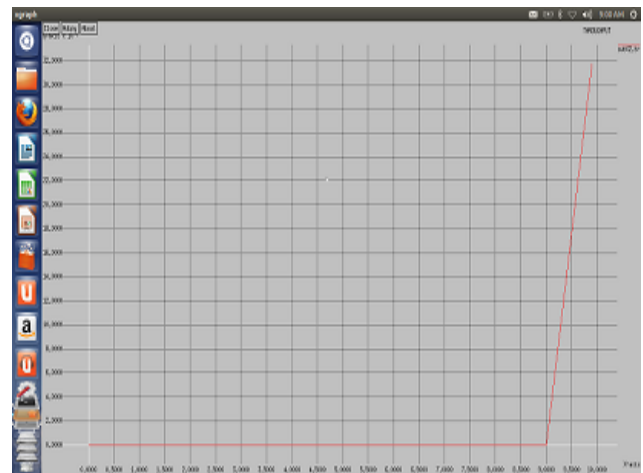


Fig 8. Throughput in the simulation phase

The sensed information are meet thrown is a speedier way was shown. The Single Source Shortest Path calculation over the different deployments and that simulation is run for the requirement was executed. The TDMA scheduling scheme have the limitation of one node only can transfer the data at that time period but in Multi Channel Scheduling scheme overcome the limitations. The military and atomic power plant sensor requisitions are utilized as a part of extremely speediest data accessing entrance to provisions, so consolidate the Multi Channel Assignment Scheme and Single Source Shortest Path Algorithm for accomplish the quick data accessing in the conveyed field.

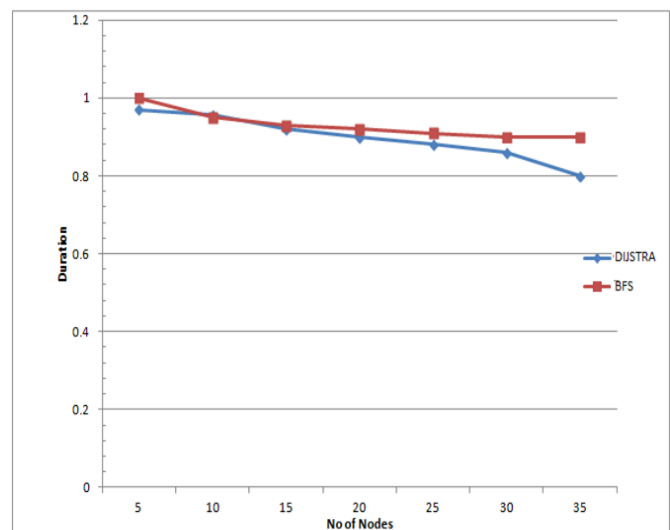


Fig 9 Performance comparison of dijkstra's and BFS algorithm

The BFS and Dijkstra's algorithm performance was compared for the data delivering time for number of nodes , based on the graph the dijkstra's algorithm was delivered the

packets quicker compared to BFS so we choose the dijkstra's algorithm in our project.

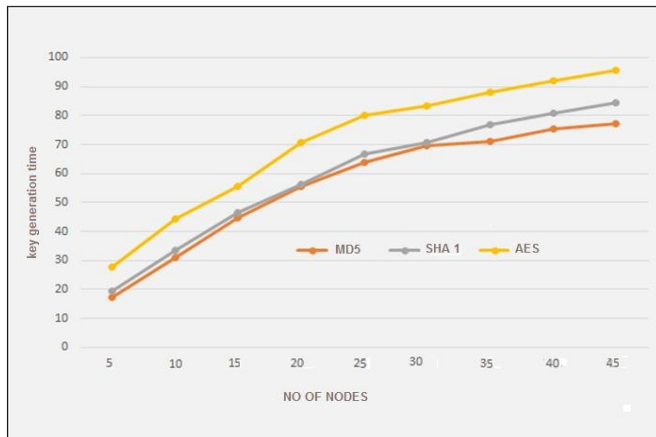


Fig 10 Comparison graph for md5

In this comparison graph, we compared three types of hashing algorithm MD5, SHA1, AES for the secure transmission of data over the intruder node from attacking. MD5 hashing took less time compared to other hashing algorithm.

VII. CONCLUSION

In this paper, the quick convergecast in WSN was accomplished where the nodes convey utilizing single source shortest path algorithm to minimize schedule length and intermediate node. The confinements because of interference and half-duplex transceivers on the node and the exploded techniques are overcome by the multichannel assignment scheme was delivered. While transmission power control helps in diminishing the length was discovered, multiple channels are more adequate that is realized. The data convergecast and data transmission over the sensor network is an faster manner has been developed. But the nodes authentication is not verified by any other , by the chance the intruder node will be in our cluster , there may be the chance of attack our nodes and service , so we can improve the security over the sensor nodes in future .

ACKNOWLEDGMENT

We thank the Department of Electronics and Communication Engineering of Kalasalingam University,(Kalasalingam Academy of Research and Education), Tamil Nadu, India for permitting to use the computational facilities available in Centre for Research in Signal Processing and VLSI Design which was setup with the support of the Department of Science and Technology (DST), New Delhi under FIST Program in 2013.

REFERENCES

[1]. S. Gandham, Y. Zhang, and Q. Huang, "Distributed time-optimal scheduling for convergecast in wireless sensor networks," *Computer Networks*, vol. 52, no. 3, pp. 610–629, 2010.

[2]. K. K. Chintalapudi and L. Venkatraman, "On the design of mac protocols for low-latency hard real-time discrete control applications over 802.15.4 hardware," in *IPSN '08*, pp. 356–367.

[3]. I. Talzi, A. Hasler, S. Gruber, and C. Tschudin, "Permasense: investigating permafrost with a wsn in the swiss alps," in *EmNets '07*, Cork, Ireland, pp. 8–12.

[4]. S. Upadhyayula and S. Gupta, "Spanning tree based algorithms for low latency and energy efficient data aggregation enhanced convergecast (dac) in wireless sensor networks," *Ad Hoc Networks*, vol. 5, no. 5, pp. 626–648, 2011.

[5]. T. Moscibroda, "The worst-case capacity of wireless sensor networks," in *IPSN '07*, Cambridge, MA, USA, pp. 1–10.

[6]. T. ElBatt and A. Ephremides, "Joint scheduling and power control for wireless ad-hoc networks," in *INFOCOM '02*, Jun, pp. 976–984.

[7]. O. D. Incel and B. Krishnamachari, "Enhancing the data collection rate of tree-based aggregation in wireless sensor networks," in *SECON '08*, San Francisco, CA, USA, pp. 569–577.

[8]. Y. Wu, J. Stankovic, T. He, and S. Lin, "Realistic and efficient multi-channel communications in wireless sensor networks," in *INFOCOM '08*, pp. 1193–1201.

[9]. A. Ghosh, O. D. Incel, V. A. Kumar, and B. Krishnamachari, "Multi-channel scheduling algorithms for fast aggregated convergecast in sensor networks," in *MASS '09*, Macau, China.

[10]. V. Annamalai, S. Gupta, and L. Schwiebert, "On tree-based convergecasting in wireless sensor networks," in *WCNC '03*, vol. 3, pp. 2011–2012.



Diwakaran S received the BE degree in Electronics and Communication Engineering from PSNA college, Anna university in 2008 and M-tech degree in Communication Systems from B.S.Abdur Rahman University in 2011 and MBA degree in General Management from Anna University, Chennai in 2013. He is currently pursuing Doctorate in the area of Wireless sensor networks. He had published 3 International Journals and attended 6 International conferences. His Research Interests include wireless communication, Mobile computing.